



Hallsworth Road, Eccles

Manchester



Offers Over £250,000

Hallsworth Road

Eccles, Manchester

Fully renovated three bed property in sought-after Peel Green area. Modern kitchen, spacious lounge, gated parking, private garden. Catchment area for outstanding schools. Freehold title. Ideal for families or first-time buyers seeking comfort and convenience.

Council Tax band: A

Tenure: Freehold

- Spacious Family Lounge
- Newly Fitted Modern Kitchen & Dining Area
- Three Generous Double Bedrooms
- Modern Family Bathroom & Downstairs W.C.
- Located in the Popular Peel Green Area
- Gated Off Road Parking & Private Garden to the Rear
- Perfectly Located with Catchment for Outstanding Schooling
- Excellently Located Close to an Array of Amenities & Transport Links
- Perfect First Buy or Family Home with Freehold Title



Entrance Hallway

A welcoming entrance hallway entered via a composite front door. Complete with a ceiling light point, wall mounted radiator and laminate flooring.

Lounge

14' 5" x 12' 9" (4.39m x 3.89m)

Featuring a gas fire. Complete with a ceiling light point, double glazed window and wall mounted radiator. Fitted with laminate flooring.

Kitchen / Diner

17' 6" x 9' 8" (5.33m x 2.95m)

Featuring modern fitted units with integral stainless steel sink, washer, electric oven and hob. Space for fridge freezer. Complete with a ceiling light point, ceiling spotlights, two double glazed windows and wall mounted radiator. Fitted with French doors, glass splashback, part tiled walls and laminate flooring. Boiler and two year old central heating system.

W.C

4' 5" x 2' 5" (1.35m x 0.74m)

Complete with a hand wash basin, W.C, ceiling light point and double glazed window. Fitted with laminate flooring.

Landing

Complete with a ceiling light point, double glazed window and carpet flooring. Loft access.

Bedroom One

13' 1" x 9' 8" (3.99m x 2.95m)

Featuring fitted wardrobes. Complete with a ceiling light point, double glazed window and wall mounted radiator. Fitted with carpet flooring.

Bedroom Two

11' 5" x 9' 5" (3.48m x 2.87m)

Complete with a ceiling light point, double glazed window and wall mounted radiator. Fitted with carpet flooring.



Bedroom Three

9' 9" x 7' 6" (2.97m x 2.29m)

Featuring fitted wardrobes. Complete with a ceiling light point, double glazed window and wall mounted radiator. Fitted with carpet flooring.

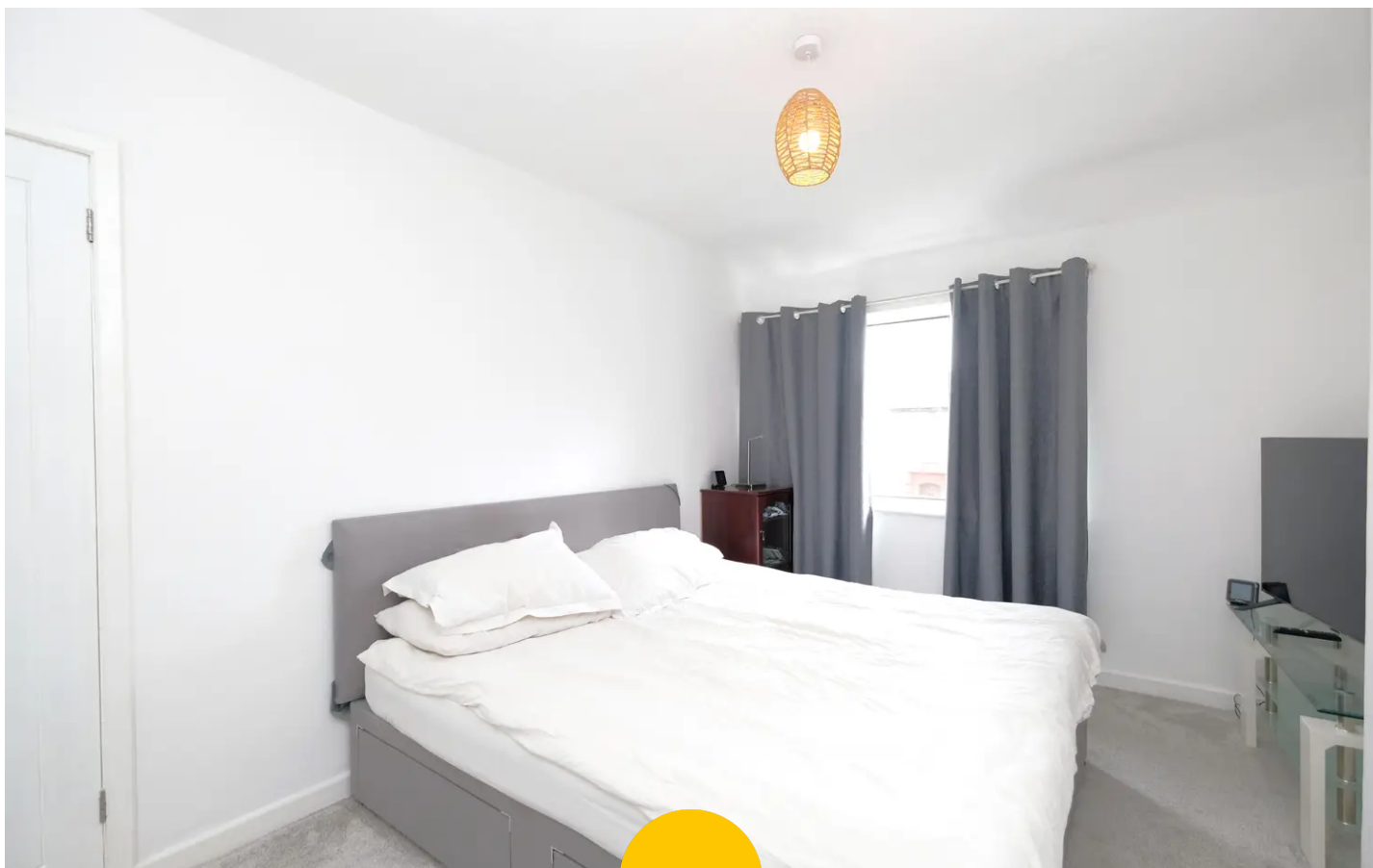
Bathroom

5' 8" x 5' 5" (1.73m x 1.65m)

Featuring a three-piece suite including bath with shower over, hand wash basin and W.C. Complete with a ceiling light point, double glazed window, vanity unit and wall mounted radiator. Fitted with part tiled walls and tiled flooring.

External

To the front of the property is gated off-road parking for two cars with lawn. To the rear of the property is a paved patio with paved path dividing the two lawns on either side and wooden shed.



HILLS







Hills | Salfords Estate Agent

Hills Residential, Sentinel House Albert Street – M30 0SS

0161 707 4900

sales@hills.agency

www.hills.agency/



THE PROPERTY MISDESCRIPTIONS ACT 1991 The Agent has not tested any apparatus, equipment, fixtures and fittings or services and so cannot verify that they are in working order or fit for the purpose. A Buyer is advised to obtain verification from their Solicitor or Surveyor. References to the Tenure of a Property are based on information supplied by the Seller. The Agent has not had sight of the title documents. A Buyer is advised to obtain verification from their Solicitor. You are advised to check the availability of this property before travelling any distance to view. Every effort and precaution has been made to ensure these particulars are correct and not misleading but their accuracy is not guaranteed nor do they form part of any contract. If there is any point which is of particular importance to you, please contact us and we will provide any information you require. This is advisable, particularly if you intend to travel some distance to view the property. The mention of any appliances and services within these details does not imply that they are in full and efficient working order. These particulars are in draft form awaiting Vendors confirmation of their accuracy. These details must therefore be taken as a guide only.