



Longmead Road, Salford

Salford



£300,000

17 Longmead Road

Salford, Salford

WOW! Are you looking for a property you can pack your bags and move in? This beautifully presented, three bedroom semi-detached family home is situated in the popular Irlam o' th' Height, and benefits from a contemporary kitchen with a kitchen island, bifolding doors and a separate utility room.

Tenure: Leasehold

- Beautifully presented three bedroom, semi-detached family home
- Tastefully decorated throughout to a high standard
- Located on the popular Irlam o' th' Height, close to local schooling and parks
- Bay-fronted lounge
- Large, extended, open plan kitchen diner with bifolding doors to the side and a kitchen island
- Stylish three-piece bathroom and a downstairs utility room with a W/C
- Three well-proportioned bedrooms
- Detached garage and a driveway providing off-road parking
- Mature garden to the side
- Close to excellent transport links into Salford Quays, Media City and Manchester City Centre, viewing is highly recommended to appreciate this property!



Entrance Hallway

14' 1" x 5' 11" (4.30m x 1.80m)

Ceiling light point, wall mounted radiator and tiled flooring.

Lounge

11' 7" x 13' 7" (3.52m x 4.13m)

Ceiling light point, double glazed bay window, multi fuel burner, wall mounted radiator and laminate flooring

Kitchen

8' 11" x 24' 5" (2.73m x 7.45m)

Toilet/Utility Room

Ceiling light point, skylight window, boiler, toilet, space for washing machine complete with a worktop and tiled flooring.

Bedroom One

11' 1" x 12' 6" (3.38m x 3.80m)

Ceiling light point, double glazed window, wall mounted radiator, original fire surround and laminate flooring.

Bedroom Two

11' 4" x 12' 2" (3.46m x 3.71m)

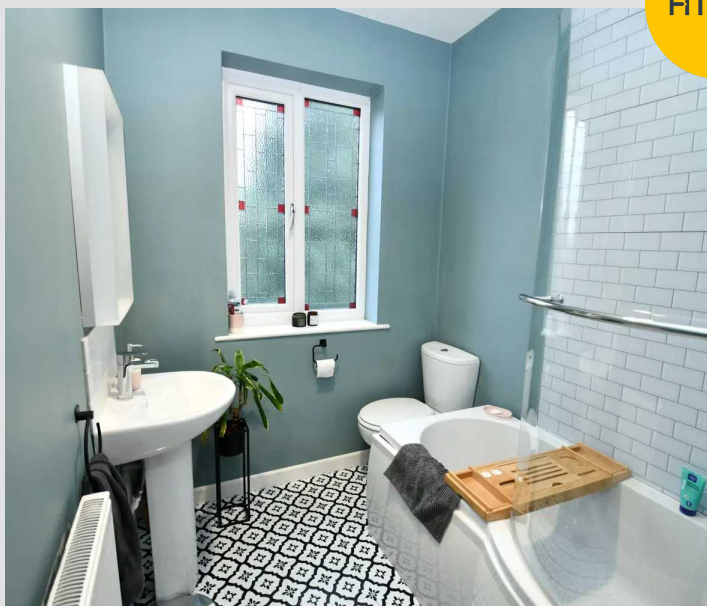
Ceiling light point, double glazed window, wall mounted radiator, original fire surround and original wooden flooring.

Bedroom Three

9' 7" x 7' 3" (2.93m x 2.22m)

Ceiling light point, double glazed window, wall mounted radiator, and carpet flooring.

Externally



Entrance Hallway

14' 1" x 5' 11" (4.30m x 1.80m)

Ceiling light point, wall mounted radiator and tiled flooring.

Lounge

11' 7" x 13' 7" (3.52m x 4.13m)

Ceiling light point, double glazed bay window, multi fuel burner, wall mounted radiator and laminate flooring

Kitchen

8' 11" x 24' 5" (2.73m x 7.45m)

Toilet/Utility Room

Ceiling light point, skylight window, boiler, toilet, space for washing machine complete with a worktop and tiled flooring.

Bedroom One

11' 1" x 12' 6" (3.38m x 3.80m)

Ceiling light point, double glazed window, wall mounted radiator, original fire surround and laminate flooring.

Bedroom Two

11' 4" x 12' 2" (3.46m x 3.71m)

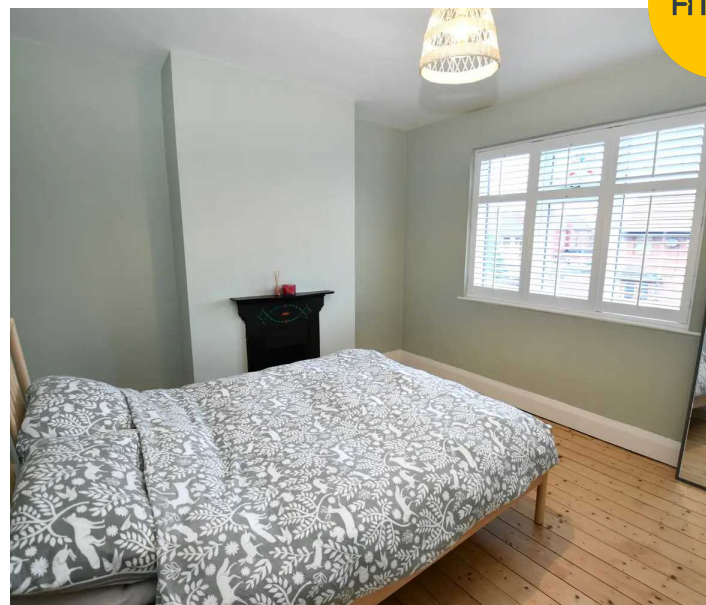
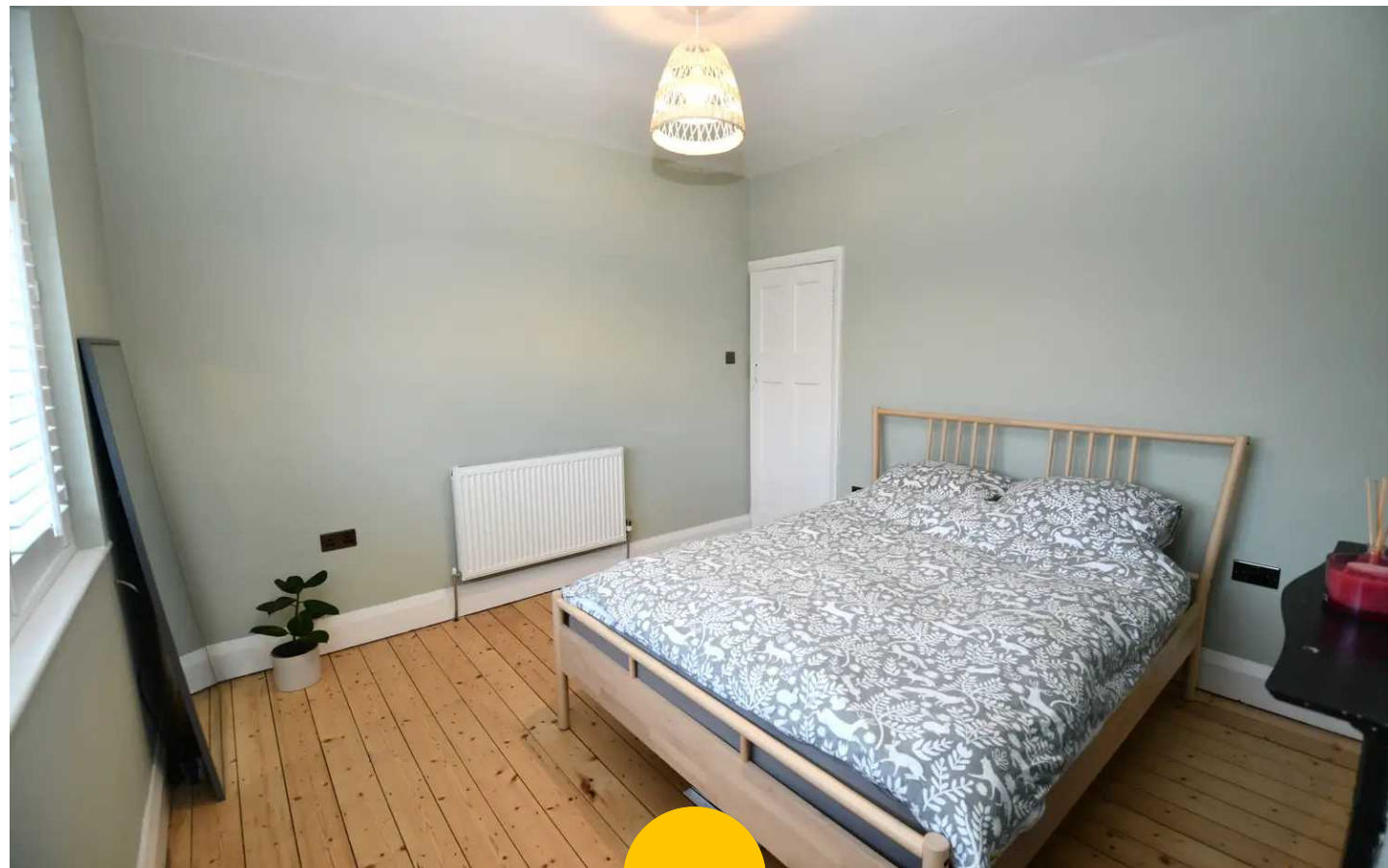
Ceiling light point, double glazed window, wall mounted radiator, original fire surround and original wooden flooring.

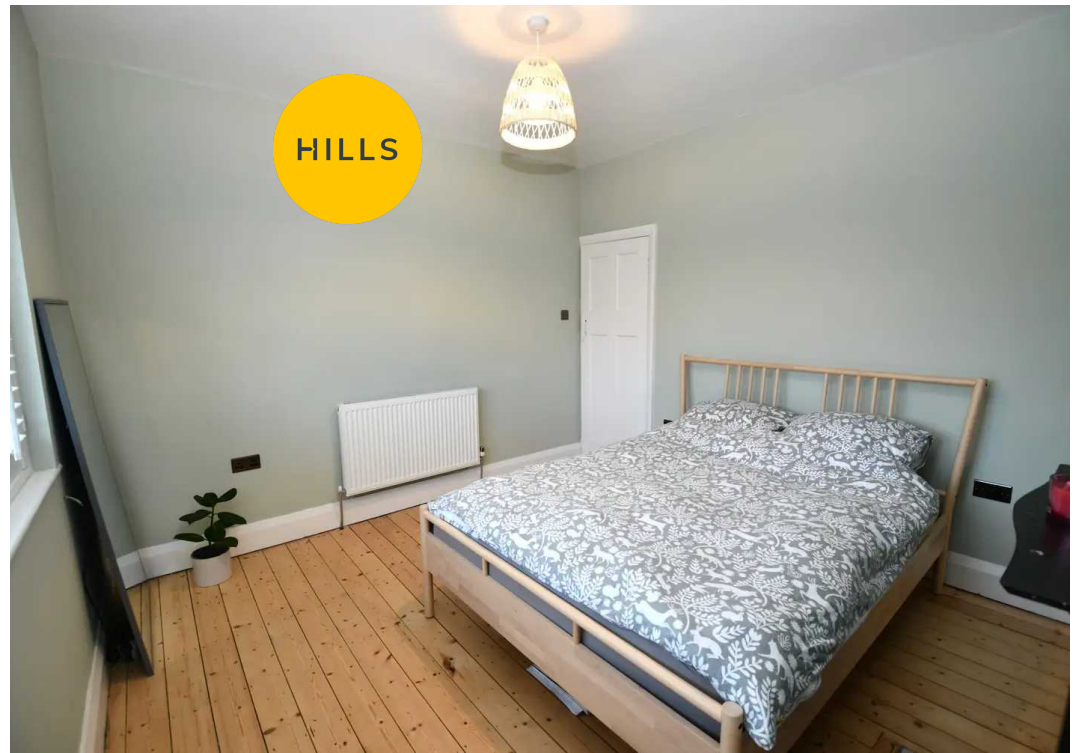
Bedroom Three

9' 7" x 7' 3" (2.93m x 2.22m)

Ceiling light point, double glazed window, wall mounted radiator, and carpet flooring.

Externally









Hills | Salfords Estate Agent

Hills Residential, Sentinel House Albert Street - M30 0SS

0161 707 4900

sales@hills.agency

www.hills.agency/



THE PROPERTY MISDESCRIPTIONS ACT 1991 The Agent has not tested any apparatus, equipment, fixtures and fittings or services and so cannot verify that they are in working order or fit for the purpose. A Buyer is advised to obtain verification from their Solicitor or Surveyor. References to the Tenure of a Property are based on information supplied by the Seller. The Agent has not had sight of the title documents. A Buyer is advised to obtain verification from their Solicitor. You are advised to check the availability of this property before travelling any distance to view. Every effort and precaution has been made to ensure these particulars are correct and not misleading but their accuracy is not guaranteed nor do they form part of any contract. If there is any point which is of particular importance to you, please contact us and we will provide any information you require. This is advisable, particularly if you intend to travel some distance to view the property. The mention of any appliances and services within these details does not imply that they are in full and efficient working order. These particulars are in draft form awaiting Vendors confirmation of their accuracy. These details must therefore be taken as a guide only.