



23 New Cross Street, Salford

Salford



In Excess of £190,000

23 New Cross Street

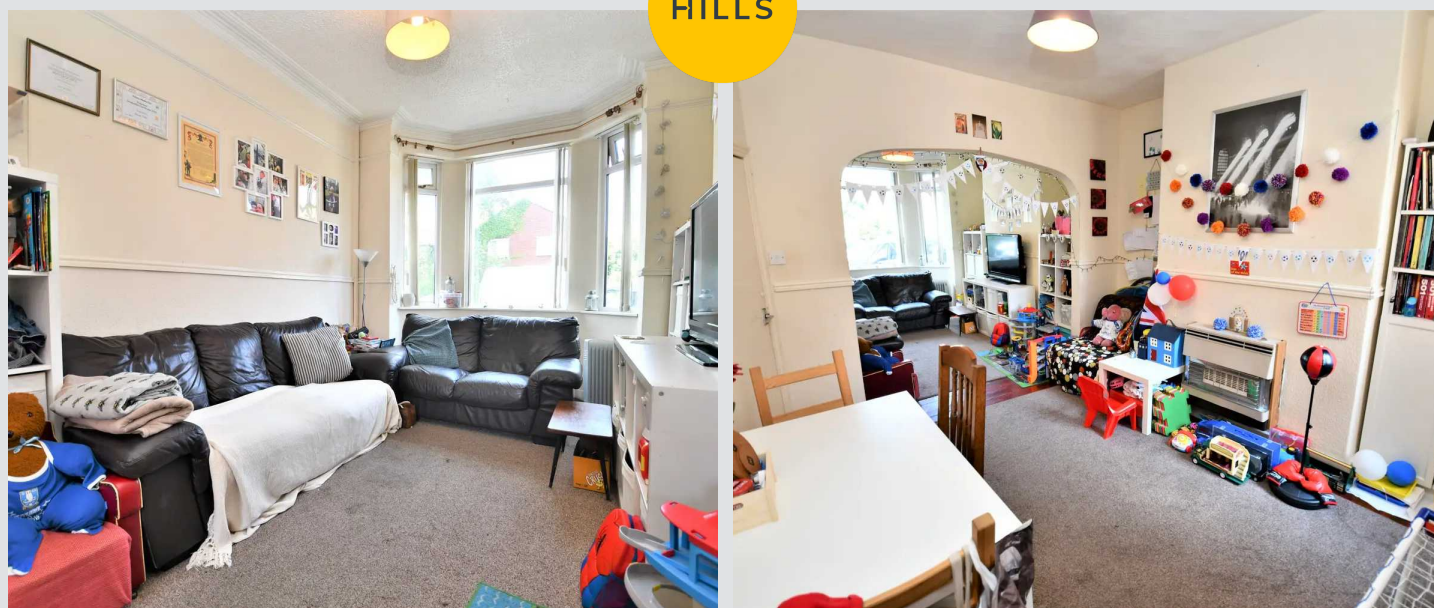
Salford, Salford

Within walking distance of Salford Royal Hospital is this THREE BEDROOM BAY-FRONTED HOME! Close to excellent transport links and providing an abundance of space, this would be a great first time home or investment!

Council Tax band: A

Tenure: Freehold

- Three Bedroom Bay-Fronted Terraced Property
- Bay-Fronted Lounge and a Spacious Dining Room
- Fitted Kitchen, Utility Room and a Three-Piece Family Bathroom
- Three Well-Proportioned Bedrooms
- Low-Maintenance Courtyard Gardens to the Front and Rear that Benefit from the Sun
- Benefits from a Wealth of Space
- Within Walking Distance of Salford Royal Hospital
- Close to Local Schooling, Well-Kept Parks and Excellent Transport Links Throughout Manchester
- Ideal First Time Home or Investment
- Viewing is Highly Recommended!



Hall

Ceiling light point, wall mounted radiator and wooden flooring.

Lounge

10' 10" x 10' 2" (3.3m x 3.1m)

Ceiling light point, double glazed bay window, wall mounted radiator and power points.

Dining Room

11' 10" x 11' 2" (3.6m x 3.4m)

Ceiling light point, double glazed window, wall mounted radiator and power points.

Kitchen

8' 10" x 8' 6" (2.7m x 2.6m)

Fitted with a range of wall and base units with complementary work surfaces and integrated sink and drainer unit. Space for a cooker, washer and fridge freezer. Ceiling light point, double glazed window and power points.

Utility Room

8' 10" x 4' 7" (2.7m x 1.4m)

Ceiling light point, double glazed window, wall mounted radiator, power point and rear door.

Bedroom One

14' 1" x 11' 2" (4.3m x 3.4m)

Ceiling light point, double glazed windows, wall mounted radiator and power points.

Bedroom Two

11' 10" x 8' 10" (3.6m x 2.7m)

Ceiling light point, double glazed window, wall mounted radiator and power points.

Bedroom Three

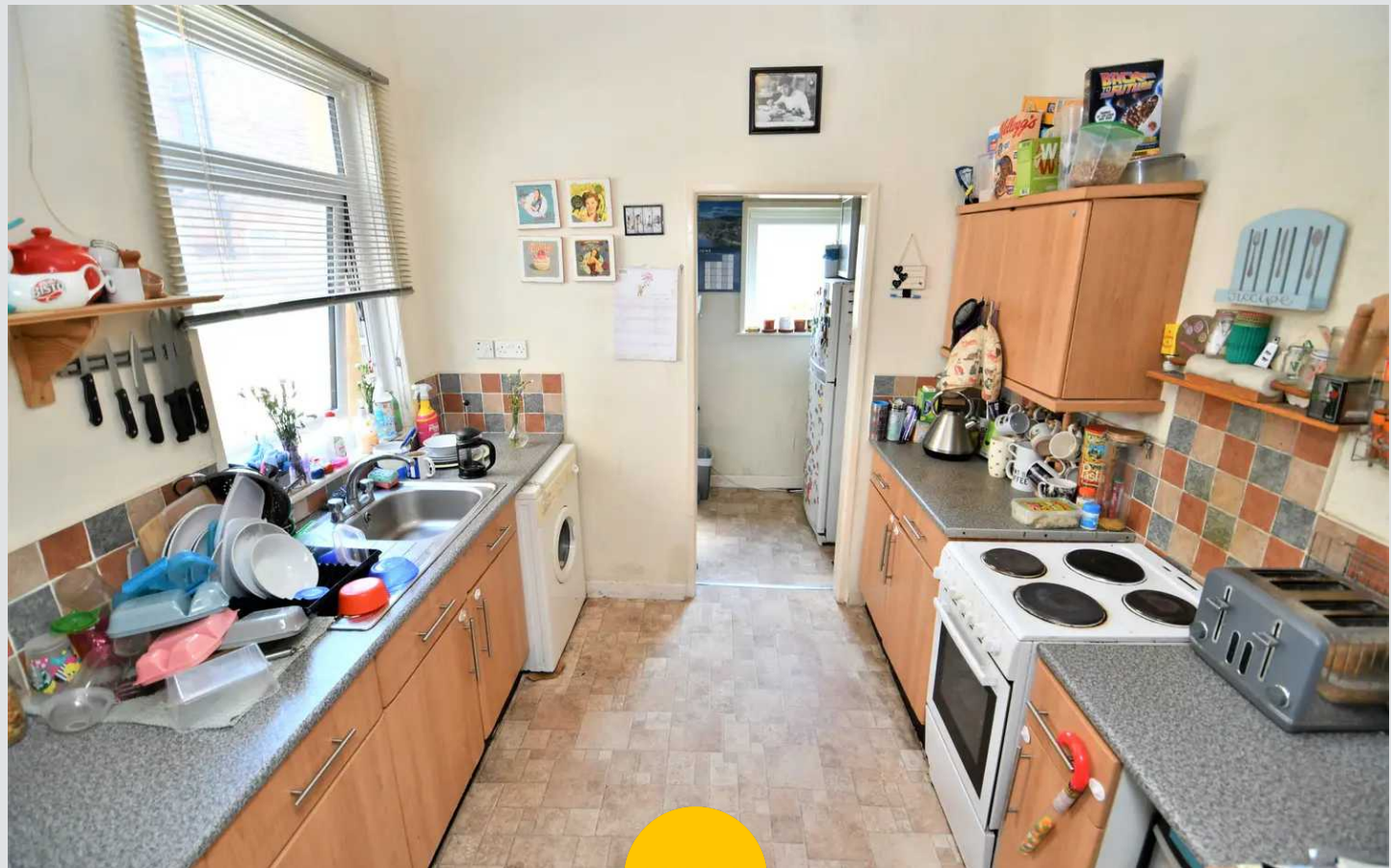
8' 10" x 7' 10" (2.7m x 2.4m)

Ceiling light point, double glazed window, wall mounted radiator and power points.

Bathroom

7' 3" x 5' 7" (2.2m x 1.7m)

Fitted with a three piece suite including a hand wash



Hall

Ceiling light point, wall mounted radiator and wooden flooring.

Lounge

10' 10" x 10' 2" (3.3m x 3.1m)

Ceiling light point, double glazed bay window, wall mounted radiator and power points.

Dining Room

11' 10" x 11' 2" (3.6m x 3.4m)

Ceiling light point, double glazed window, wall mounted radiator and power points.

Kitchen

8' 10" x 8' 6" (2.7m x 2.6m)

Fitted with a range of wall and base units with complementary work surfaces and integrated sink and drainer unit. Space for a cooker, washer and fridge freezer. Ceiling light point, double glazed window and power points.

Utility Room

8' 10" x 4' 7" (2.7m x 1.4m)

Ceiling light point, double glazed window, wall mounted radiator, power point and rear door.

Bedroom One

14' 1" x 11' 2" (4.3m x 3.4m)

Ceiling light point, double glazed windows, wall mounted radiator and power points.

Bedroom Two

11' 10" x 8' 10" (3.6m x 2.7m)

Ceiling light point, double glazed window, wall mounted radiator and power points.

Bedroom Three

8' 10" x 7' 10" (2.7m x 2.4m)

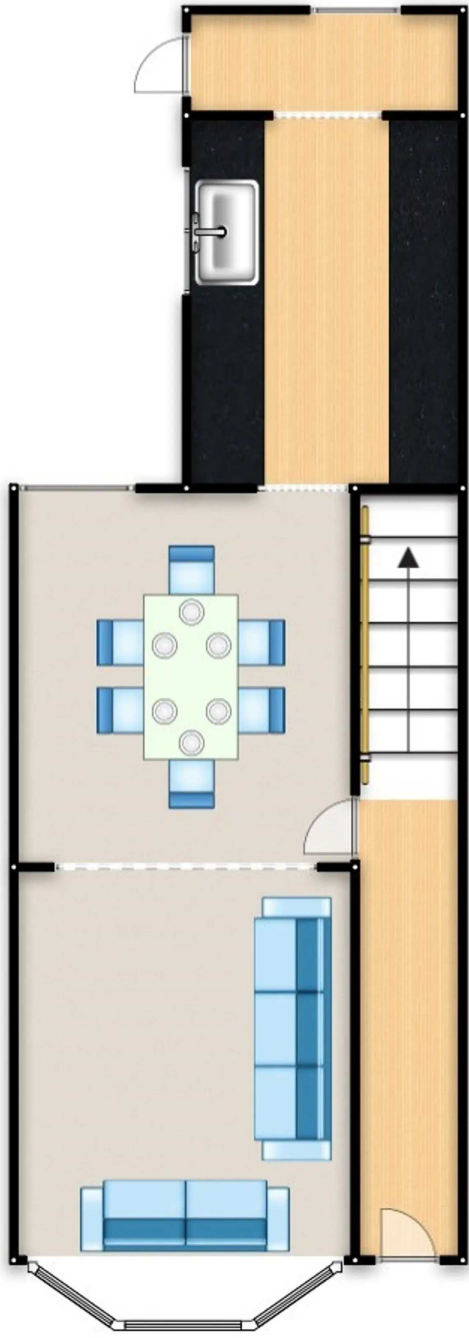
Ceiling light point, double glazed window, wall mounted radiator and power points.

Bathroom

7' 3" x 5' 7" (2.2m x 1.7m)

Fitted with a three piece suite including a hand wash







Hills | Salfords Estate Agent

Hills Residential, Sentinel House Albert Street - M30 0SS

0161 707 4900

sales@hills.agency

www.hills.agency/



THE PROPERTY MISDESCRIPTIONS ACT 1991 The Agent has not tested any apparatus, equipment, fixtures and fittings or services and so cannot verify that they are in working order or fit for the purpose. A Buyer is advised to obtain verification from their Solicitor or Surveyor. References to the Tenure of a Property are based on information supplied by the Seller. The Agent has not had sight of the title documents. A Buyer is advised to obtain verification from their Solicitor. You are advised to check the availability of this property before travelling any distance to view. Every effort and precaution has been made to ensure these particulars are correct and not misleading but their accuracy is not guaranteed nor do they form part of any contract. If there is any point which is of particular importance to you, please contact us and we will provide any information you require. This is advisable, particularly if you intend to travel some distance to view the property. The mention of any appliances and services within these details does not imply that they are in full and efficient working order. These particulars are in draft form awaiting Vendors confirmation of their accuracy. These details must therefore be taken as a guide only.