

Peel Green Road

Manchester



£290,000

Peel Green Road

Eccles, Manchester

Stunning four bed terraced house blends period charm with modern living. Bay-fronted lounge, shaker style kitchen, luxury bathroom. Cellar, low-maintenance garden. Ideal location near amenities, schools. Luxury living in a tranquil setting. Contact for viewing.

Council Tax band: A

Tenure: Freehold

- Stunning Period Property Laid over Four Floors
- Bay Fronted Lounge, Formal Dining Room & Timeless Shaker Style Kitchen to Ground Floor
- Modern Four Piece Family Bathroom Suite
- Four Double Bedrooms, Master an Impressive 19ft (approx) with Fitted Wardrobes
- Cellar with Electric, Providing Suitable Storage Space
- Low Maintenance Gardens with Indian Stone Paving, and Artificial Lawn to the Rear
- Perfectly Located close to Local Amenities including the Trafford Centre, & Motorway Links (M60)
- Close to an Array of Educational Settings



Hallway

A welcoming entrance hallway entered via a composite front door. Complete with two ceiling light points, wall mounted radiator and engineered oak flooring. Cellar access.

Reception Room One

16' 0" x 12' 3" (4.88m x 3.73m)

Featuring a built-in alcove. Complete with a ceiling light point, double glazed window and wall mounted radiator. Fitted with laminate flooring.

Reception Room Two

10' 2" x 12' 5" (3.10m x 3.78m)

Complete with a ceiling light point, double glazed window and wall mounted radiator. Fitted with laminate flooring.

Kitchen

11' 2" x 9' 5" (3.40m x 2.87m)

Featuring complementary wall and base units with integral stainless steel sink, electric hob and under counter fridge. Space for a washer. Complete with ceiling spotlights, double glazed window and uPVC door. Fitted with part tiled walls and laminate vinyl tile flooring.

First Floor Landing

Ceiling light point and carpeted floors.

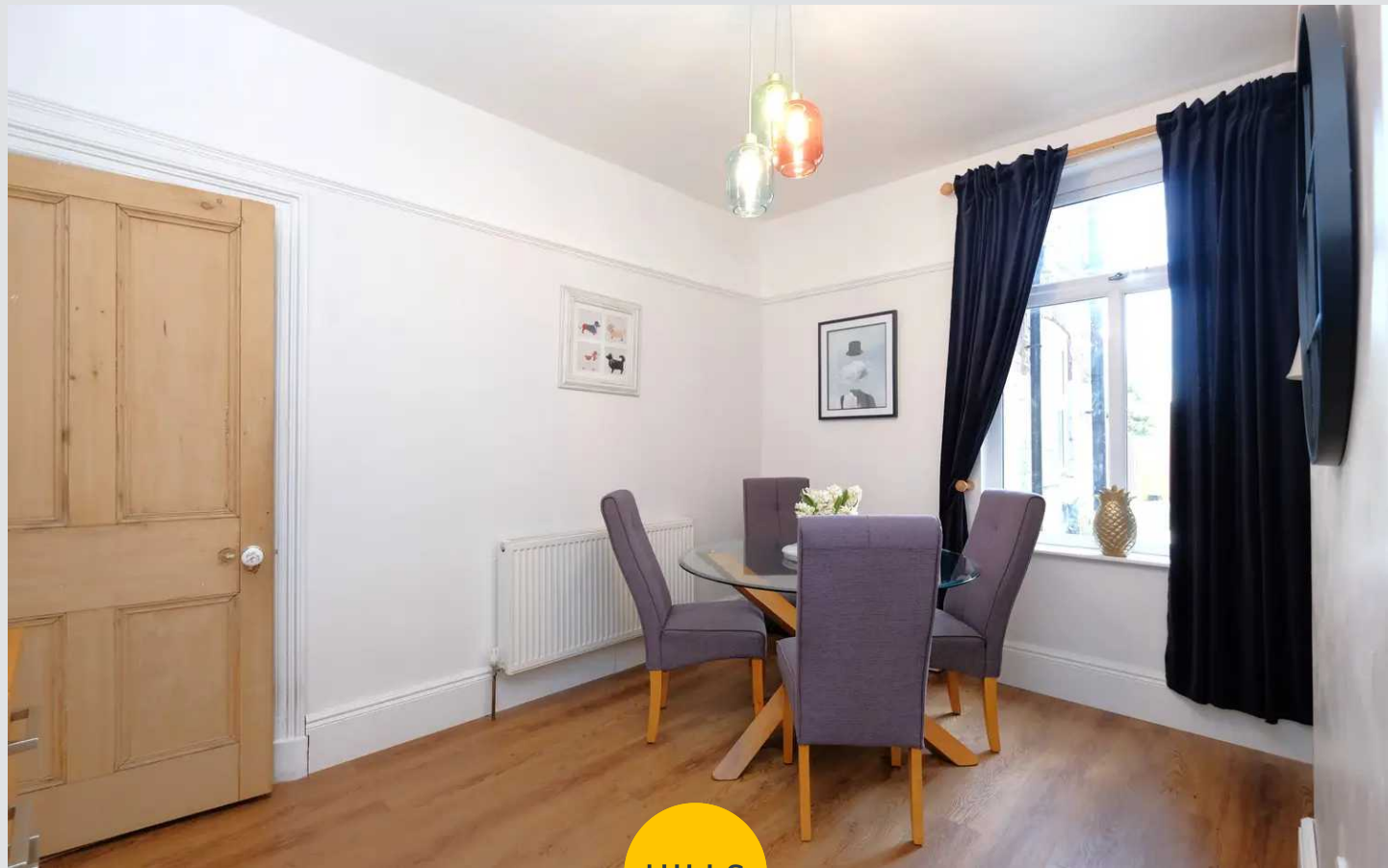
Bedroom Two

Featuring fitted wardrobes. Complete with a ceiling light point, two double glazed windows and wall mounted radiator. Fitted with carpet flooring.

Bedroom Three

10' 7" x 12' 5" (3.23m x 3.78m)

Complete with a ceiling light point, double glazed window and wall mounted radiator. Fitted with laminate flooring.



Bathroom

10' 2" x 9' 5" (3.10m x 2.87m)

Featuring a four-piece suite including a bath, shower cubicle, hand wash basin and W.C. Complete with a ceiling light point, double glazed window, vanity unit and built in storage. Fitted with tiled walls and flooring.

Second Floor Landing

Ceiling light point and carpeted floors.

Bedroom One

15' 7" x 18' 9" (4.75m x 5.72m)

Featuring fitted wardrobes. Complete with ceiling spotlights, two Velux windows, double glazed window and wall mounted radiator. Fitted with carpet flooring.

Bedroom Four

10' 7" x 9' 4" (3.23m x 2.84m)

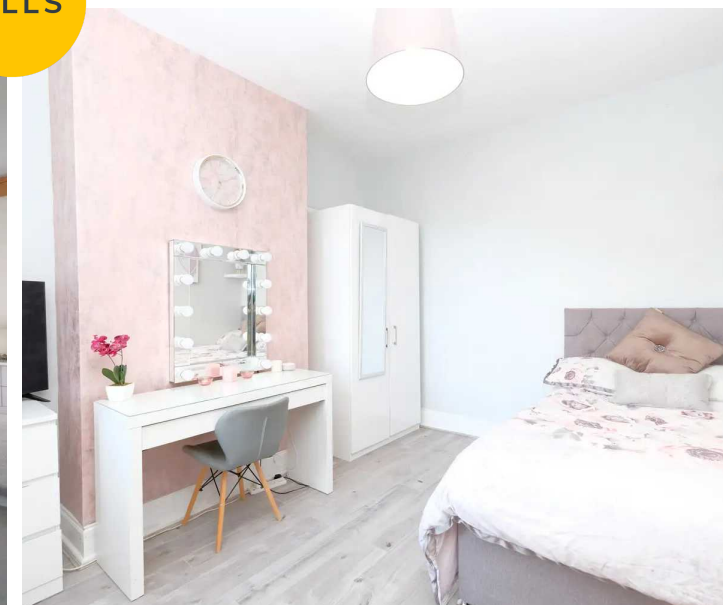
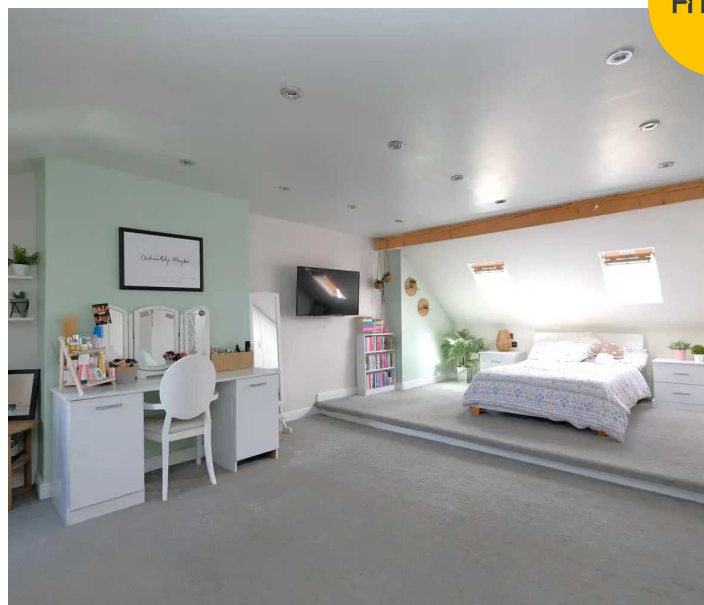
Complete with a ceiling light point, double glazed window and wall mounted radiator. Fitted with carpet flooring.

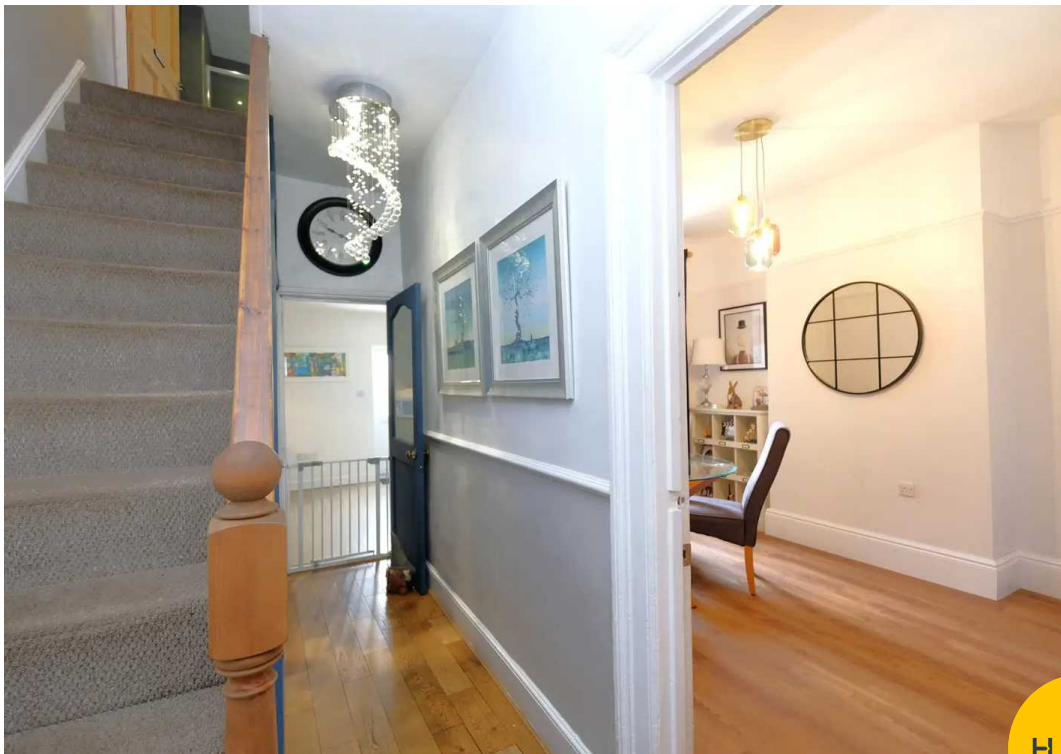
Externally

To the front of the property is a gated garden with Indian stone. To the rear of the property is a gated garden with Indian stone patio and artificial lawn with raised planters.



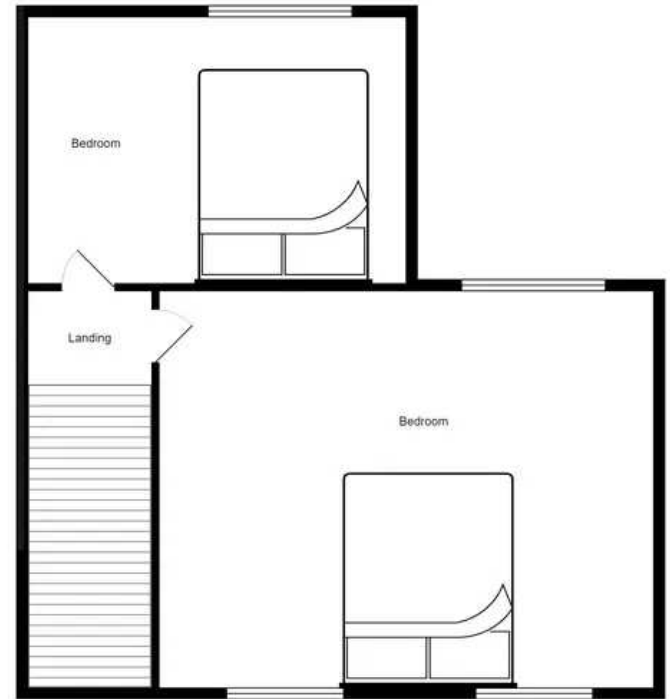
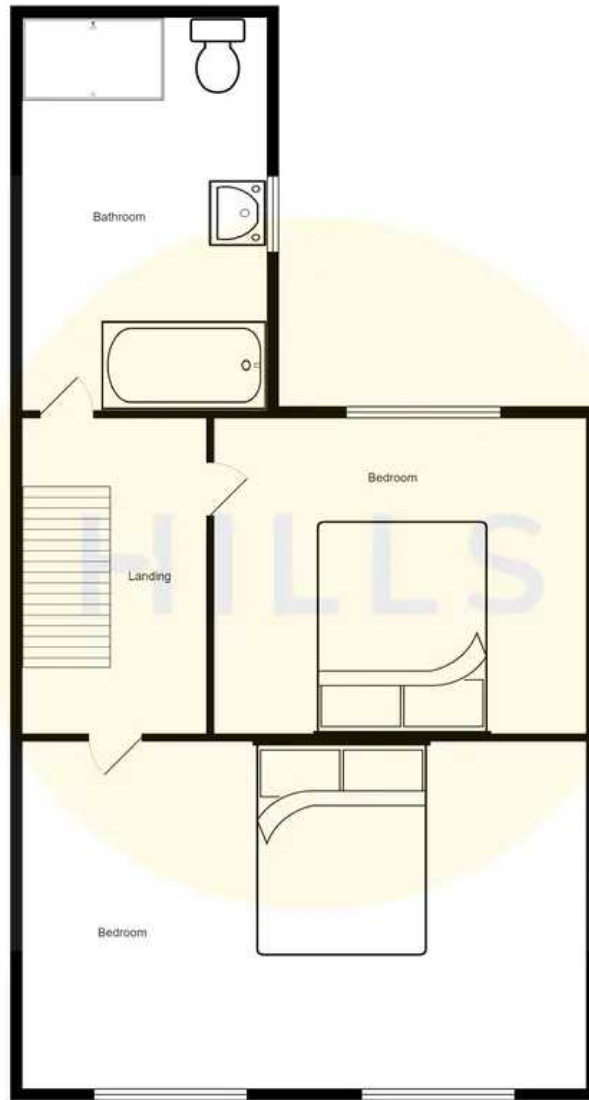
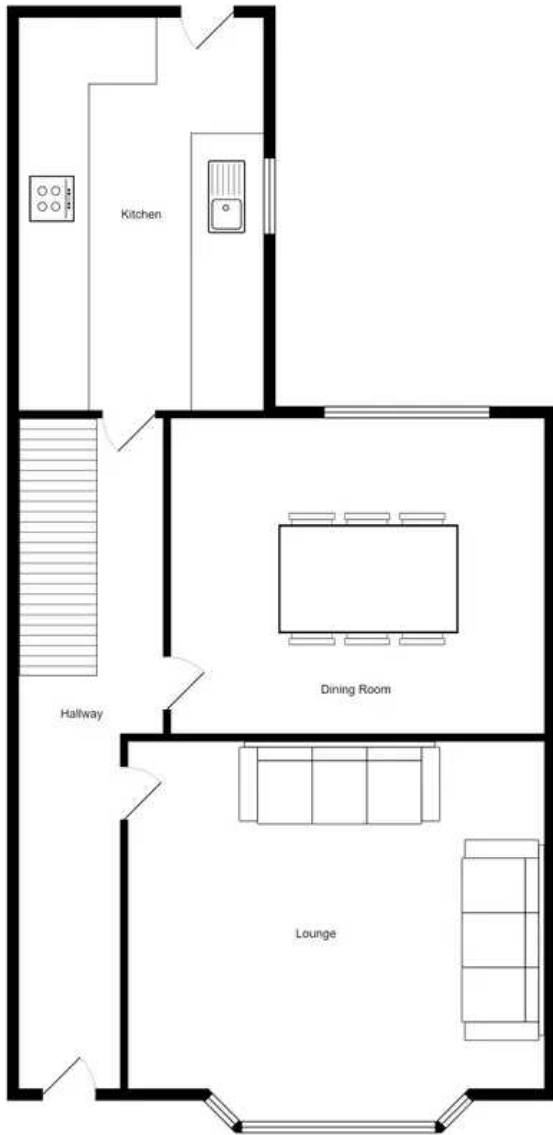
HILLS

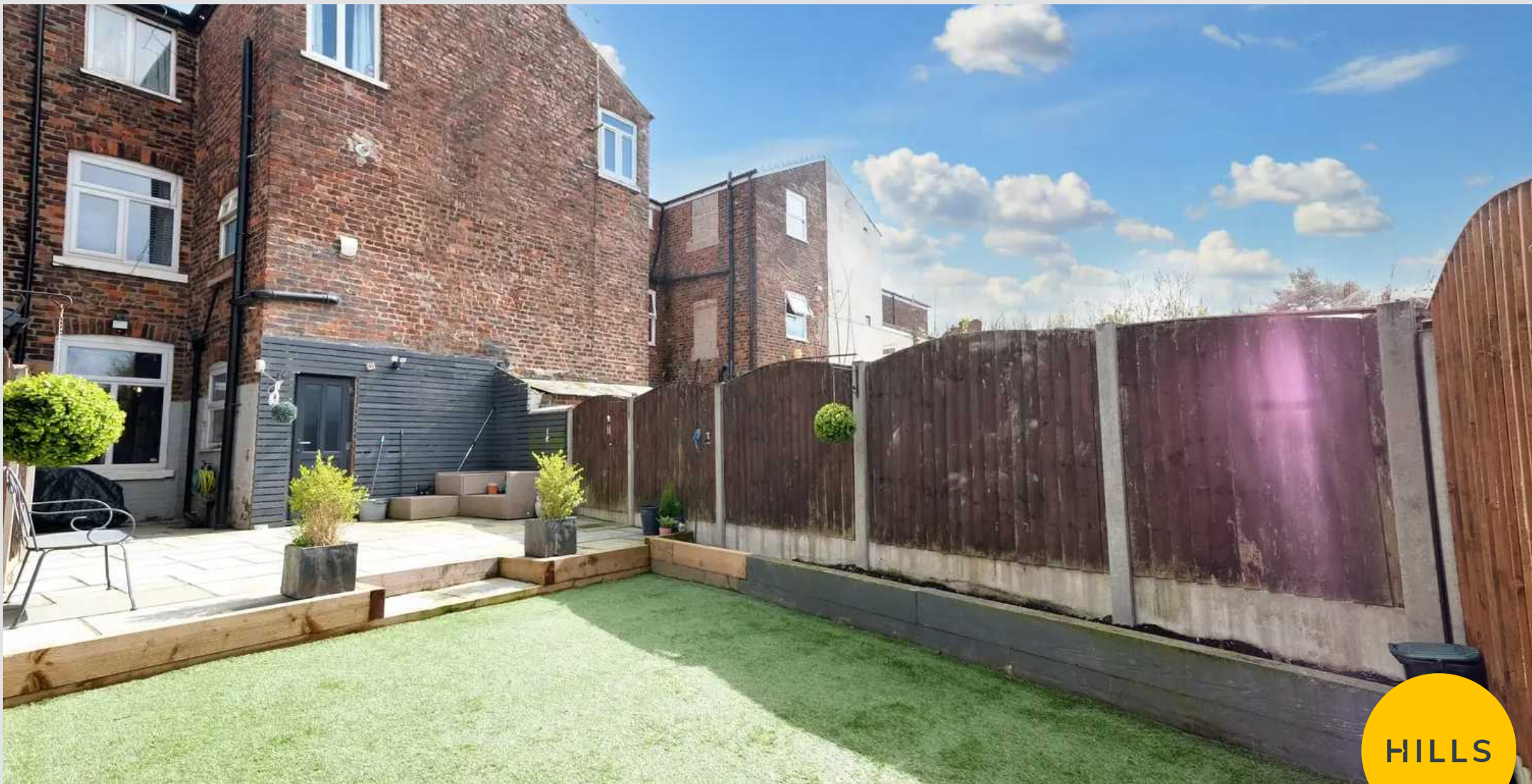




HILLS







Hills | Salfords Estate Agent

Hills Residential, Sentinel House Albert Street - M30 0SS

0161 707 4900

sales@hills.agency

www.hills.agency/



THE PROPERTY MISDESCRIPTIONS ACT 1991 The Agent has not tested any apparatus, equipment, fixtures and fittings or services and so cannot verify that they are in working order or fit for the purpose. A Buyer is advised to obtain verification from their Solicitor or Surveyor. References to the Tenure of a Property are based on information supplied by the Seller. The Agent has not had sight of the title documents. A Buyer is advised to obtain verification from their Solicitor. You are advised to check the availability of this property before travelling any distance to view. Every effort and precaution has been made to ensure these particulars are correct and not misleading but their accuracy is not guaranteed nor do they form part of any contract. If there is any point which is of particular importance to you, please contact us and we will provide any information you require. This is advisable, particularly if you intend to travel some distance to view the property. The mention of any appliances and services within these details does not imply that they are in full and efficient working order. These particulars are in draft form awaiting Vendors confirmation of their accuracy. These details must therefore be taken as a guide only.