



# Flynn Court, Monroe Close

Salford



£165,000

# Flynn Court

Salford

WOW – WHAT A BEAUTIFUL HOME! Overlooking Buile Hill Park and located on the TOP FLOOR of this modern development is this STUNNING and SPACIOUS TWO BEDROOM APARTMENT that has been renovated throughout!

Council Tax band: B

Tenure: Leasehold

- Beautifully Presented Two Bedroom Apartment
- Overlooking Buile Hill Park
- Large Lounge Diner with Plenty of Natural Light
- Fitted Furniture in Both of the Bedrooms
- Modern Fitted Kitchen and a Contemporary Three-Piece Shower Room
- Stunning Communal Gardens with Laid-to-Lawn Grass, Trees and Mature Plants
- Within Walking Distance of Salford Royal Hospital and Amenities
- Close to Excellent Transport Links into Salford Quays, Media City and Manchester City Centre
- Ideal First Time Home or Investment - Viewing is Highly Recommended!



## Entrance Hall

## Lounge/Diner

Dimensions: 18' 7" x 10' 0" (5.66m x 3.05m). Double glazed window to the side, ceiling light point and wall-mounted radiator.

## Kitchen

Dimensions: 8' 6" x 6' 4" (2.59m x 1.93m). Fitted with a range of wall and base units with complimentary roll top work surfaces and integral stainless steel sink and drainer unit. Integrated four ring hob and oven with extractor. Space for dish washer. Double glazed window to the side, ceiling light point, tiled splash-backs and laminate flooring.

## Bathroom

Dimensions: 6' 4" x 6' 2" (1.93m x 1.88m). Featuring a modern shower cubicle, hand wash basin and W.C. Complete with ceiling spotlights and double glazed window.

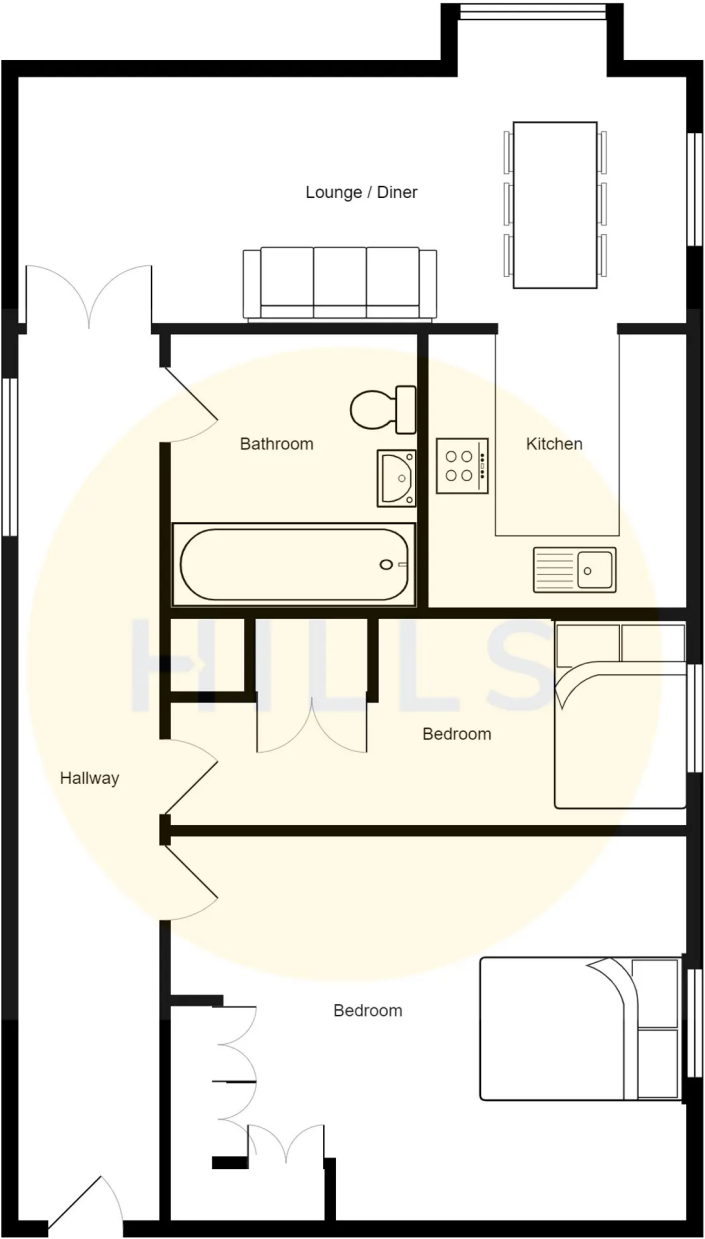
## Bedroom 1

Dimensions: 14' 1" x 8' 8" (4.29m x 2.64m). Double glazed window to the side, ceiling light point, wall-mounted radiator and laminate flooring.

## Bedroom 2

Dimensions: 14' 1" x 5' 10" (4.29m x 1.78m). Double glazed window to the front, ceiling light point and wall-mounted radiator.







## Hills | Salfords Estate Agent

Hills Residential, Sentinel House Albert Street - M30 0SS

0161 707 4900

[sales@hills.agency](mailto:sales@hills.agency)

[www.hills.agency/](http://www.hills.agency/)



THE PROPERTY MISDESCRIPTIONS ACT 1991 The Agent has not tested any apparatus, equipment, fixtures and fittings or services and so cannot verify that they are in working order or fit for the purpose. A Buyer is advised to obtain verification from their Solicitor or Surveyor. References to the Tenure of a Property are based on information supplied by the Seller. The Agent has not had sight of the title documents. A Buyer is advised to obtain verification from their Solicitor. You are advised to check the availability of this property before travelling any distance to view. Every effort and precaution has been made to ensure these particulars are correct and not misleading but their accuracy is not guaranteed nor do they form part of any contract. If there is any point which is of particular importance to you, please contact us and we will provide any information you require. This is advisable, particularly if you intend to travel some distance to view the property. The mention of any appliances and services within these details does not imply that they are in full and efficient working order. These particulars are in draft form awaiting Vendors confirmation of their accuracy. These details must therefore be taken as a guide only.