



Roberts Street, Eccles

Manchester



Offers Over £210,000

Roberts Street

Eccles, Manchester

Immaculate two bed semi-detached property with modern comforts and character features. Cosy lounge with log burner, extended kitchen/dining area. Two double bedrooms, modern bathroom. Private low-maintenance garden. Convenient location with easy access to amenities. Perfect for first home or downsizing.

Council Tax band: B

Tenure: Freehold

- Extended Two Bedroom Semi Detached Property
- Immaculately Presented Throughout & Ready to Move Straight In
- Cosy Lounge with Log Burner
- Extended Open Plan Kitchen & Dining Space
- Two generous Double Bedrooms, Fitted wardrobes to the Master
- Modern Bathroom Suite
- Undergone a Full Renovation in the last Six Years
- Low Maintenance Rear Garden that Benefits from the Sun
- Perfectly Positioned Close to Amenities & Transport Links
- Perfect First Home or Downsize



Hallway

A welcoming entrance hallway entered via a uPVC front door. Complete with a ceiling light point, wall mounted radiator and laminate flooring.

Lounge

11' 6" x 10' 8" (3.51m x 3.25m)

Featuring a log burner. Complete with a ceiling light point, double glazed window and wall mounted radiator. Fitted with laminate flooring.

Kitchen / Diner

19' 8" x 14' 9" (5.99m x 4.50m)

Featuring complementary wall and base units with integral stainless steel sink and electric hob. Space for fridge freezer, washer, electric oven. Complete with a ceiling light point, ceiling spotlights, Velux window and wall mounted radiator. Fitted with storage cupboard and laminate flooring.

Landing

Complete with a ceiling light point and carpet flooring. Loft access.

Bedroom One

10' 9" x 15' 4" (3.28m x 4.67m)

Featuring fitted wardrobes. Complete with a ceiling light point, two double glazed windows and wall mounted radiator. Fitted with carpet flooring.

Bedroom Two

12' 0" x 9' 7" (3.66m x 2.92m)

Featuring an open fire. Complete with a ceiling light point, double glazed window and wall mounted radiator. Fitted with carpet flooring.



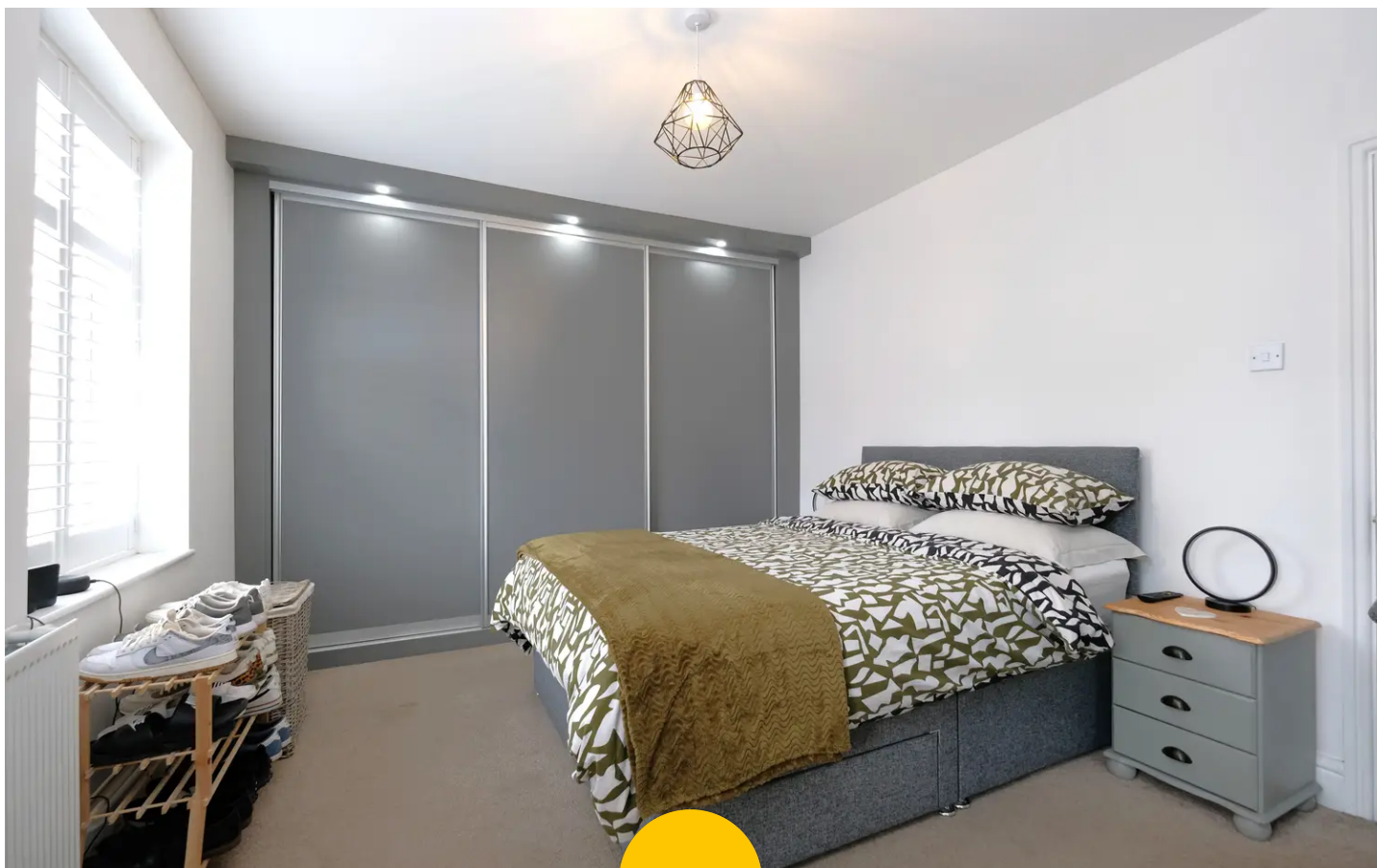
Bathroom

8' 0" x 7' 4" (2.44m x 2.24m)

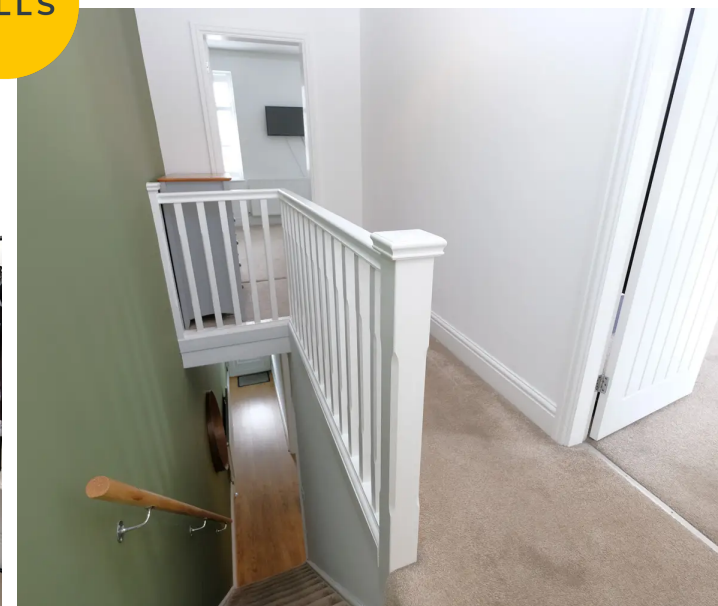
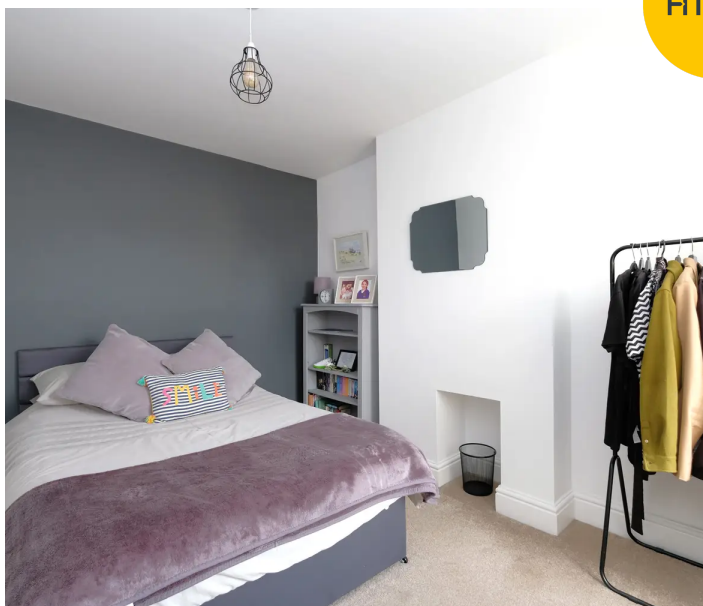
Featuring a three-piece suite including bath with shower over, hand wash basin and W.C. Complete with ceiling spotlights, double glazed window and heated towel rail. Fitted with lino flooring.

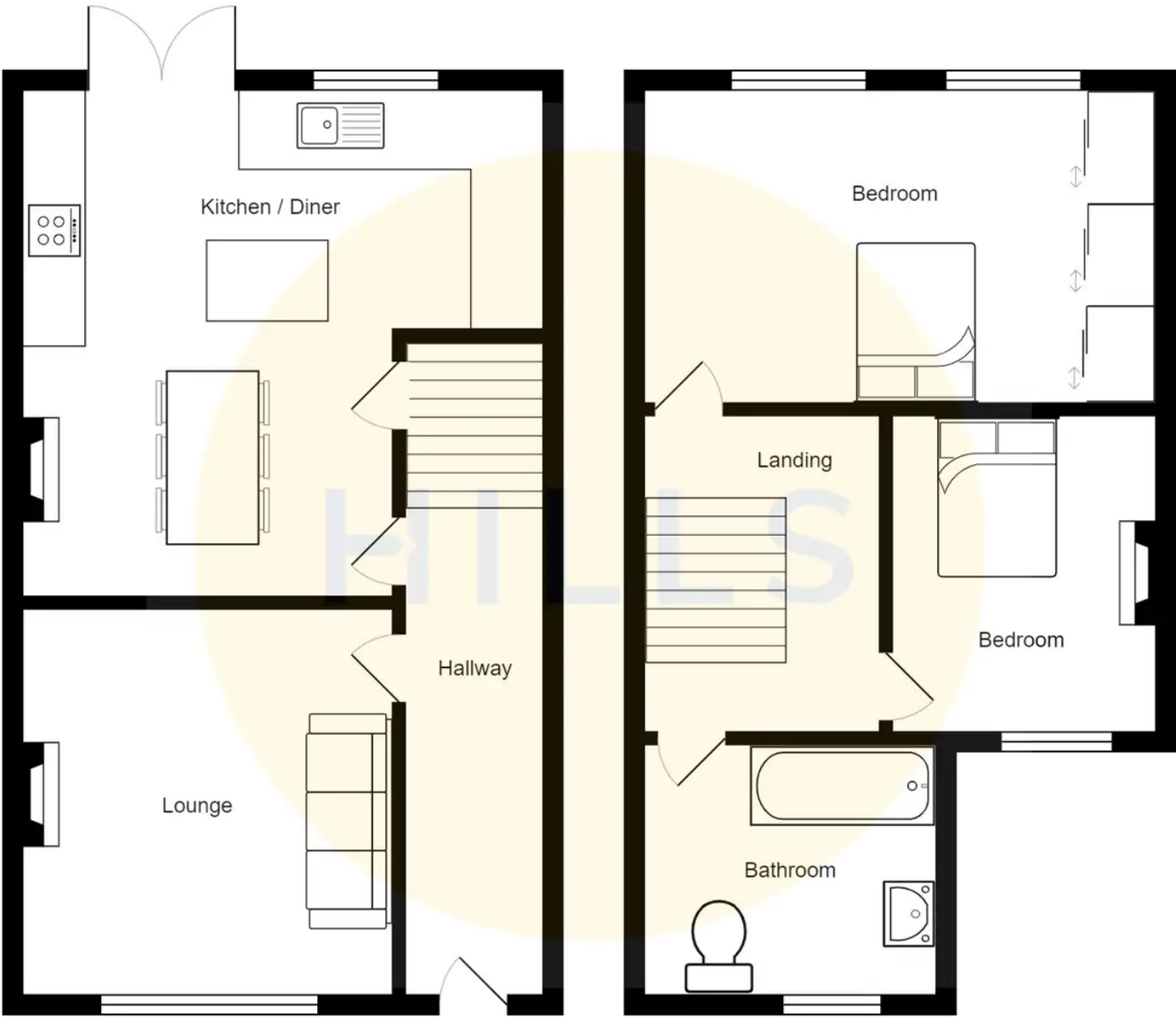
External

To the front of the property is a low maintenance paved front garden. To the rear of the property is a paved rear garden with pergola and side access.



HILLS







Hills | Salfords Estate Agent

Hills Residential, Sentinel House Albert Street - M30 0SS

0161 707 4900

sales@hills.agency

www.hills.agency/



THE PROPERTY MISDESCRIPTIONS ACT 1991 The Agent has not tested any apparatus, equipment, fixtures and fittings or services and so cannot verify that they are in working order or fit for the purpose. A Buyer is advised to obtain verification from their Solicitor or Surveyor. References to the Tenure of a Property are based on information supplied by the Seller. The Agent has not had sight of the title documents. A Buyer is advised to obtain verification from their Solicitor. You are advised to check the availability of this property before travelling any distance to view. Every effort and precaution has been made to ensure these particulars are correct and not misleading but their accuracy is not guaranteed nor do they form part of any contract. If there is any point which is of particular importance to you, please contact us and we will provide any information you require. This is advisable, particularly if you intend to travel some distance to view the property. The mention of any appliances and services within these details does not imply that they are in full and efficient working order. These particulars are in draft form awaiting Vendors confirmation of their accuracy. These details must therefore be taken as a guide only.