

Vicars Street, Eccles

Manchester



Offers Over £170,000

Vicars Street

Eccles, Manchester

Charming two bed end terraced home in sought-after area. Versatile living spaces, modern shower room, private rear garden. Potential for further development. Close to amenities, public transport, and motorway links. Ideal for first-time buyers or investors. No vendor chain.

Council Tax band: B

Tenure: Leasehold

- Two Bedroom End Terrace Property Offered with No Onward Chain
- Two Reception Rooms
- Fitted Kitchen
- Two Double Bedrooms, Fitted Wardrobes Completing the Master
- Modern Shower Room Installed around Five Years Ago
- Beautifully Kept Sun Drenched, Private Rear Garden
- Located In a Popular Residential Area
- Potential for Further Development to the Rear
- Short Walk to Monton Village & Eccles Centre



Entrance Hallway

Ceiling light point, carpeted flooring and stairs to the 1st floor landing

Lounge

13' 4" x 9' 9" (4.06m x 2.97m)

Ceiling light point, wall mounted radiator, double glazed window and a gas fire with feature surround

Dining Room

13' 2" x 10' 6" (4.01m x 3.20m)

Ceiling light point, wall mounted radiator and a double glazed window. Carpeted flooring and a gas fire with feature surround

Kitchen

7' 7" x 6' 7" (2.31m x 2.01m)

Fitted with a range of wall and base units with complementary work surfaces and an integral sink and drainer unit. With space for a cooker and fridge/freezer. Karndean flooring. Boiler.

Landing

Ceiling light point, carpeted flooring and loft access.

Bedroom One

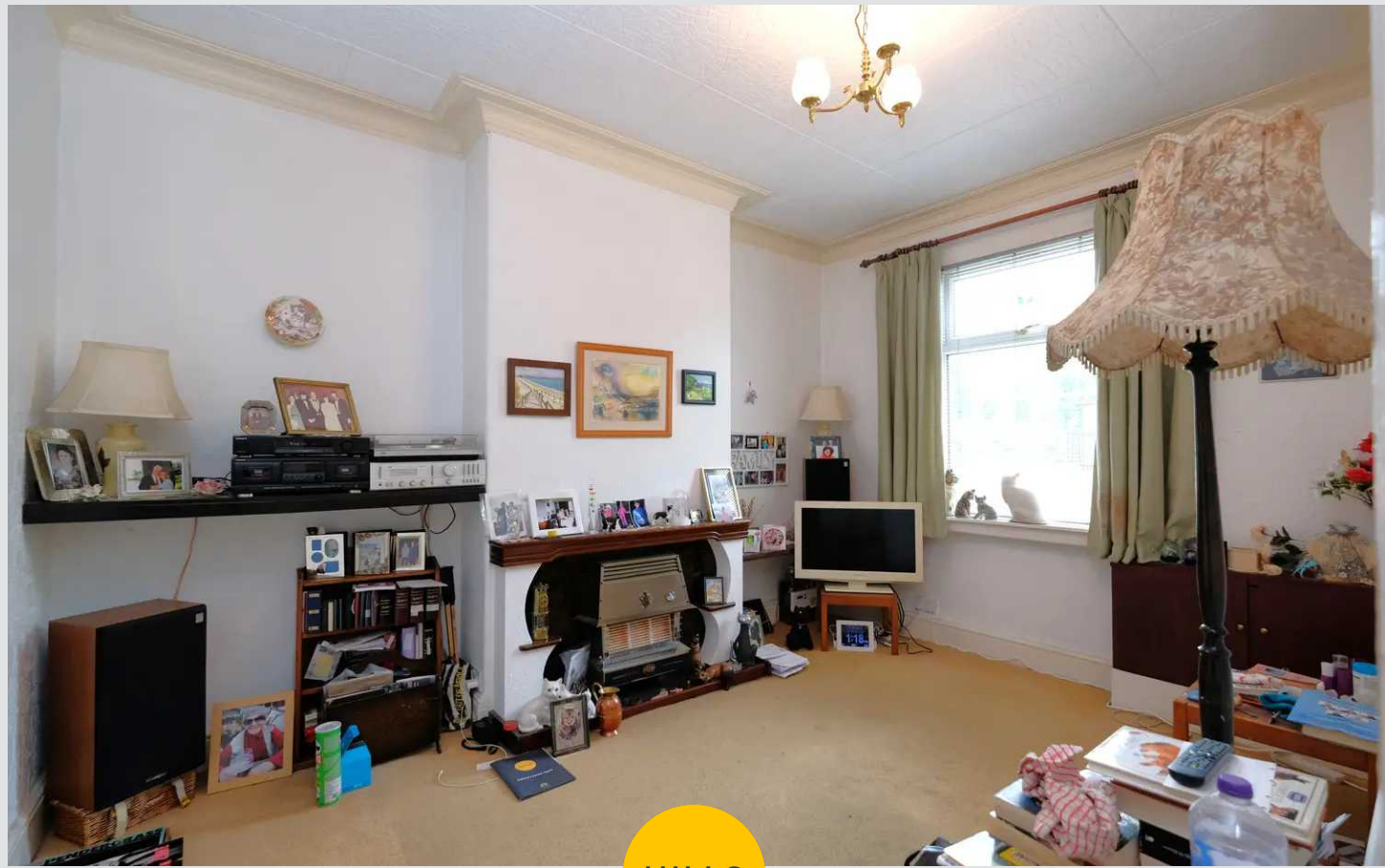
13' 4" x 12' 1" (4.06m x 3.68m)

Ceiling light point, double glazed window and fitted wardrobes. Carpeted flooring.

Bedroom Two

13' 2" x 8' 6" (4.01m x 2.59m)

Ceiling light point, wall mounted radiator and a double glazed window to the rear elevation. Carpeted flooring.



Bathroom

7' 0" x 6' 7" (2.13m x 2.01m)

Fitted with a three piece suite that includes a bath with shower over, low level W.C and a pedestal hand wash basin. Tiled walls, double glazed window and a wall mounted radiator.

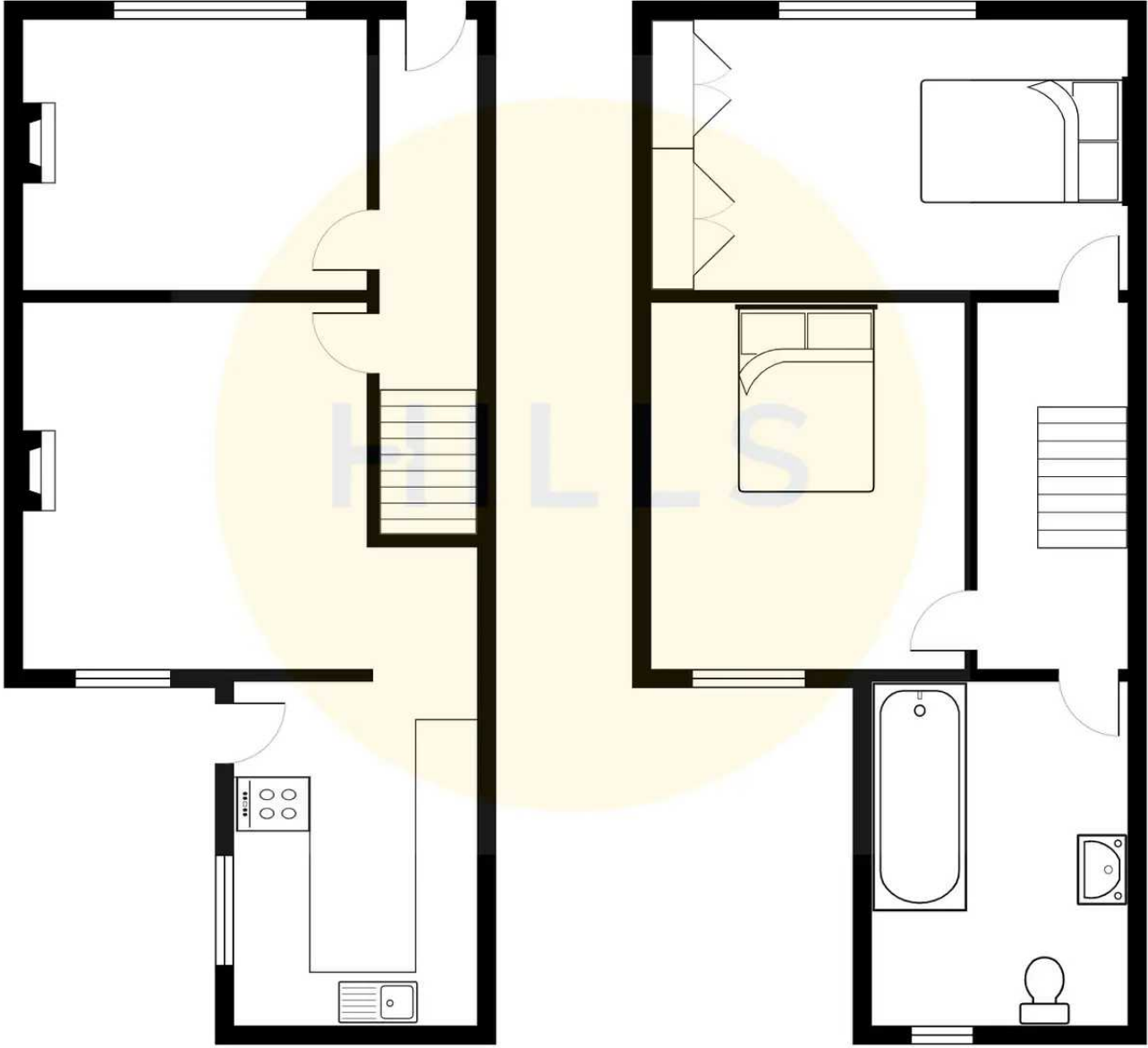
Externally

To the rear is a york stone paved area, with separate lawn, planted borders and storage. To the front is a small gated garden.



HILLS







HILLS

Hills | Salfords Estate Agent

Hills Residential, Sentinel House Albert Street - M30 0SS

0161 707 4900

sales@hills.agency

www.hills.agency/



THE PROPERTY MISDESCRIPTIONS ACT 1991 The Agent has not tested any apparatus, equipment, fixtures and fittings or services and so cannot verify that they are in working order or fit for the purpose. A Buyer is advised to obtain verification from their Solicitor or Surveyor. References to the Tenure of a Property are based on information supplied by the Seller. The Agent has not had sight of the title documents. A Buyer is advised to obtain verification from their Solicitor. You are advised to check the availability of this property before travelling any distance to view. Every effort and precaution has been made to ensure these particulars are correct and not misleading but their accuracy is not guaranteed nor do they form part of any contract. If there is any point which is of particular importance to you, please contact us and we will provide any information you require. This is advisable, particularly if you intend to travel some distance to view the property. The mention of any appliances and services within these details does not imply that they are in full and efficient working order. These particulars are in draft form awaiting Vendors confirmation of their accuracy. These details must therefore be taken as a guide only.