

Whimberry Close

Salford



£275,000

# Whimberry Close

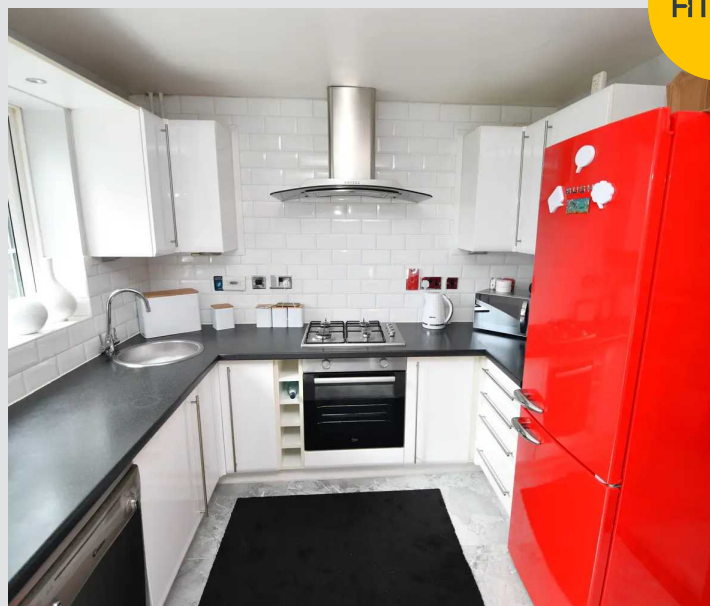
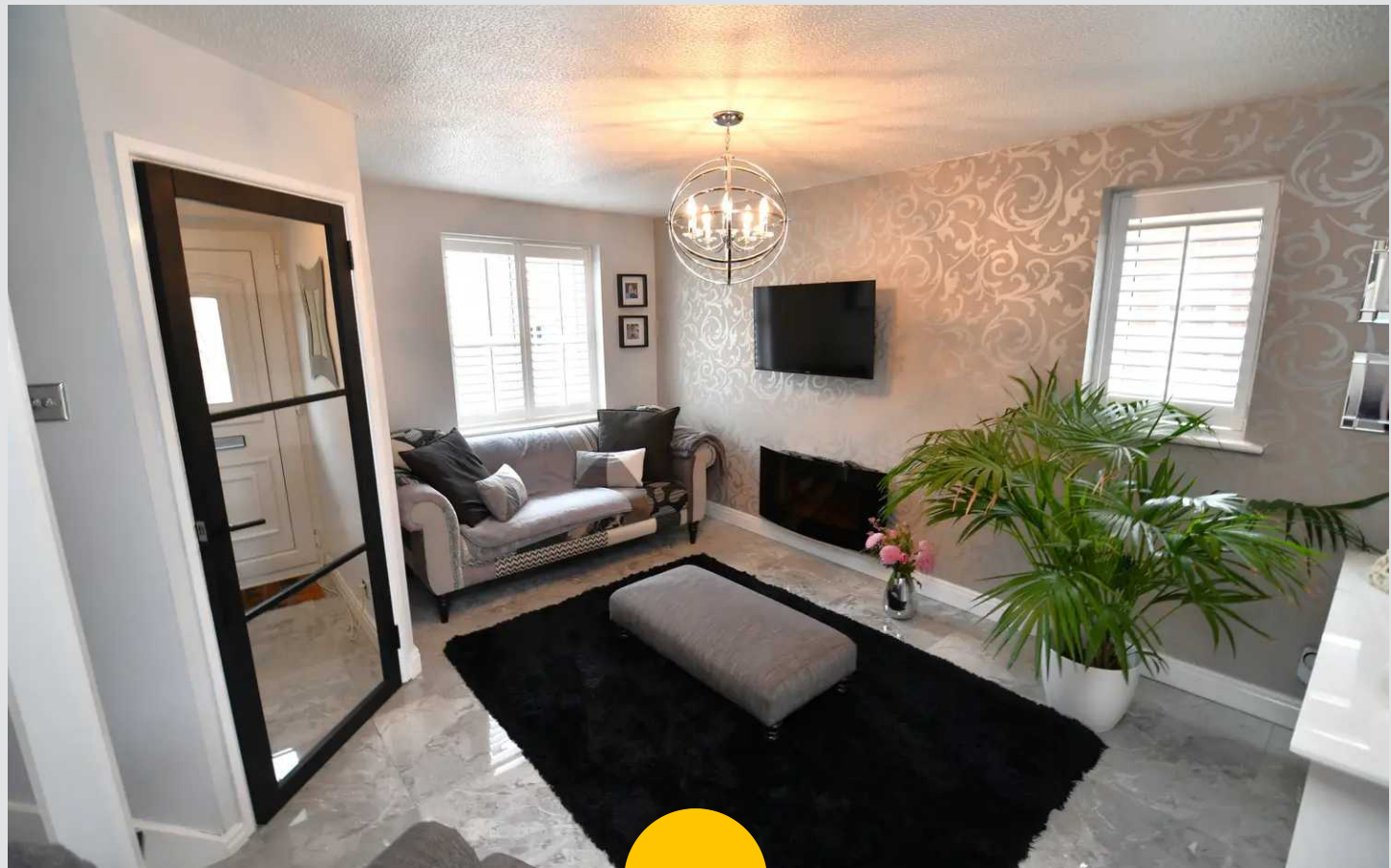
Salford

This modern, three bedroom semi-detached property has been beautifully decorated throughout. Within walking distance of Salford Quays, Media City and Manchester City Centre, this property offers a contemporary style in a convenient location.

Council Tax band: A

Tenure: Leasehold

- Modern Three Bedroom, Semi-Detached Property
- Within Walking Distance of Salford Quays, Media City and Manchester City Centre
- Stylish Lounge and a Downstairs W/C
- Contemporary Kitchen Diner and a Modern, Three-Piece Family Bathroom
- Three Well-Proportioned Bedrooms
- Driveway to the Side Providing Ample Off-Road Parking
- Beautifully Presented Garden to the Rear with Laid-to-Lawn Grass, Paving and Mature Plants
- Within Easy Access of a Range of Bars, Shops and Restaurants
- Close to Excellent Transport Links Throughout Manchester
- Viewing is Highly Recommended!



### Entrance Hallway

A welcoming entrance hallway with a ceiling light point and marble tile flooring.

### Lounge

15' 2" x 11' 3" (4.63m x 3.44m)

A lovely, spacious lounge with a ceiling light point, two double glazed windows, radiator and marbled tile flooring.

### Kitchen Diner

14' 4" x 8' 10" (4.36m x 2.68m)

Featuring fitted units with integral hob and oven, washer. Space for dishwasher. Complete with ceiling light point, double glazed windows with grey marbled tiled flooring.

### W/C

6' 4" x 2' 11" (1.94m x 0.89m)

Featuring with W/C and hand wash basin. Complete with ceiling light point, double glazed window, radiator and tiled flooring.

### Landing

Complete with a ceiling light point and carpet flooring.

### Bedroom 1

12' 0" x 8' 4" (3.65m x 2.54m)

Featuring ceiling light point, two double glazed windows, radiator. Complete with vinyl flooring.

### Bedroom 2

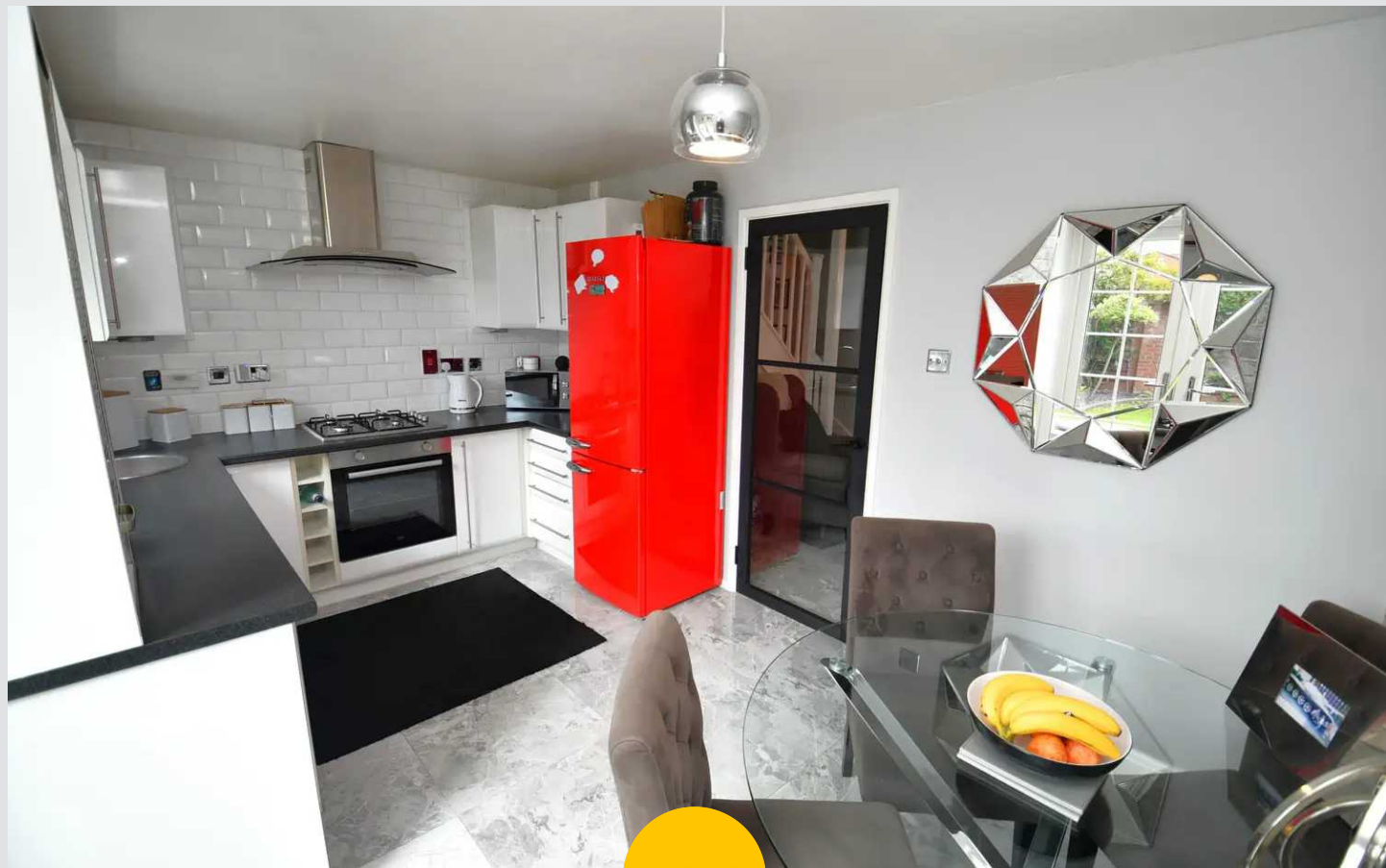
8' 11" x 7' 10" (2.72m x 2.40m)

Featuring ceiling light point, double glazed window, radiator. Complete with vinyl flooring.

### Bedroom 3

8' 10" x 6' 3" (2.68m x 1.91m)

Featuring ceiling light point, double glazed window, radiator. Complete with vinyl flooring.



**Bathroom**

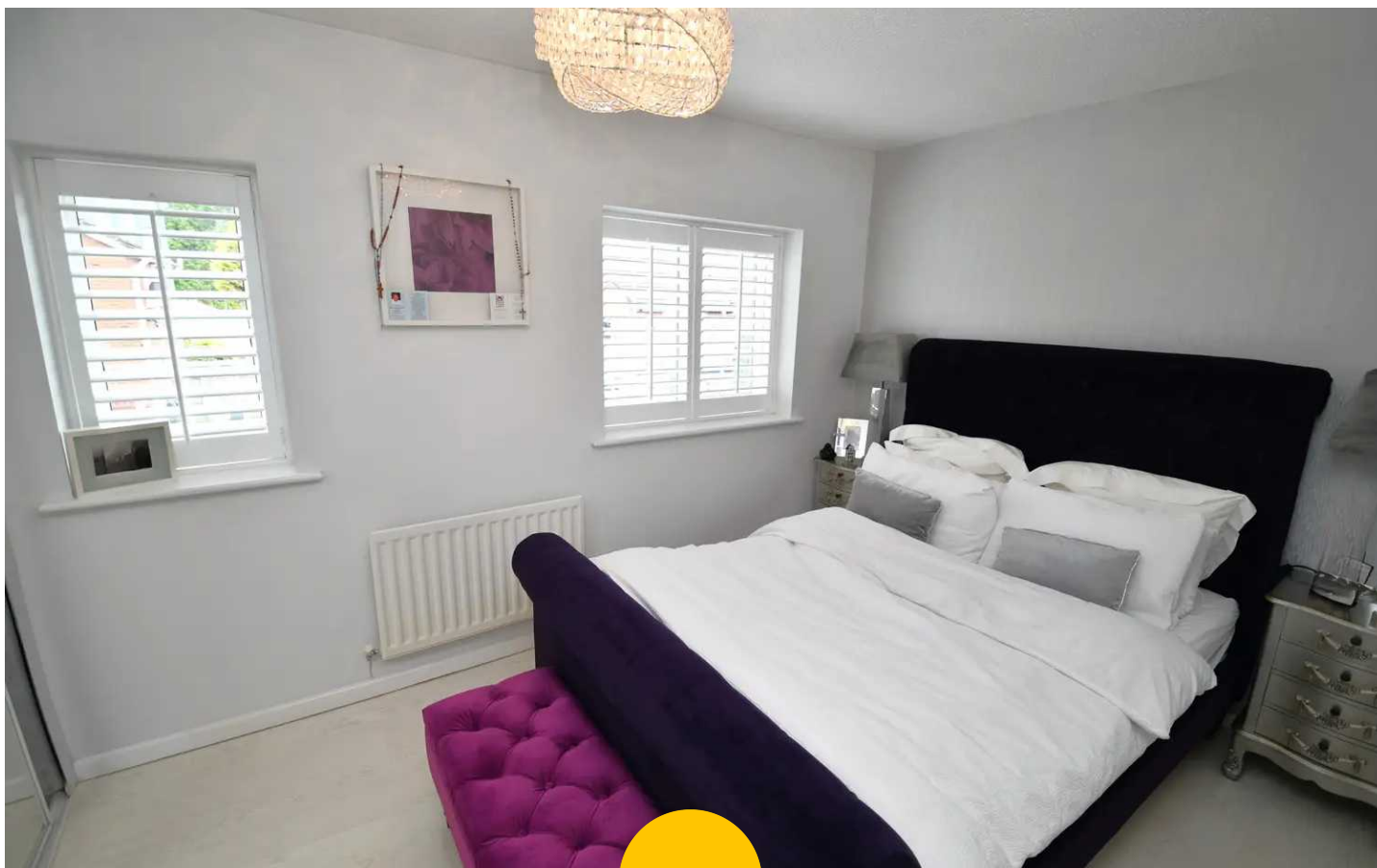
6' 7" x 6' 2" (2.01m x 1.89m)

A modern bathroom featuring a three - piece suite including a shower over the bath with a hand wash basin and W/C. Featuring ceiling light point, double glazed window. Complete with tiled walls and vinyl flooring.

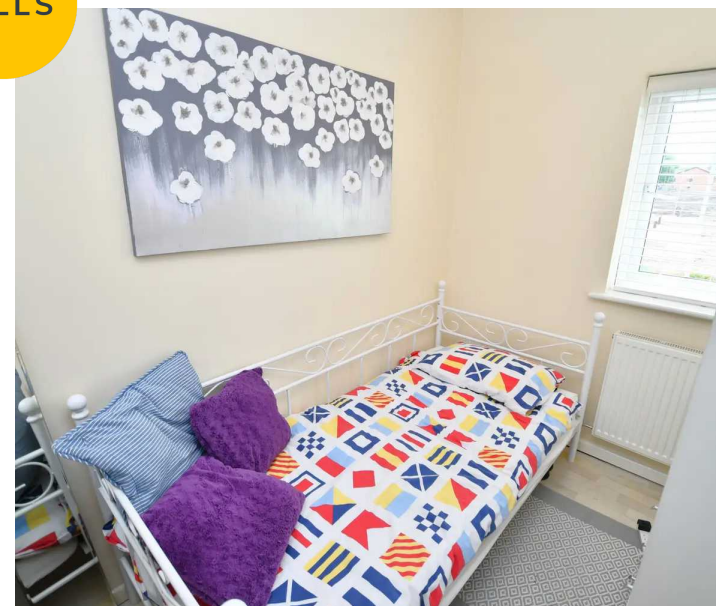
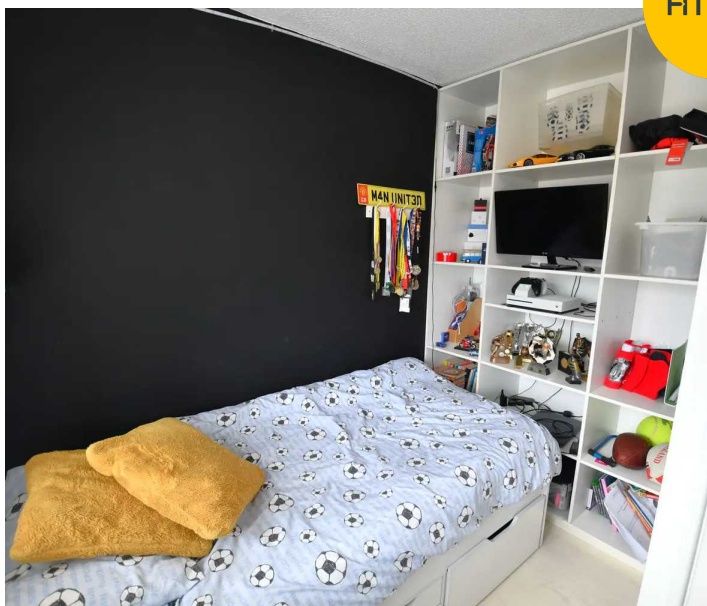
**External**

To the front of the property is a well presented garden with a driveway to the side providing ample off road parking.

To the rear of the property is a beautifully maintained garden with mature plants, stones and parking.



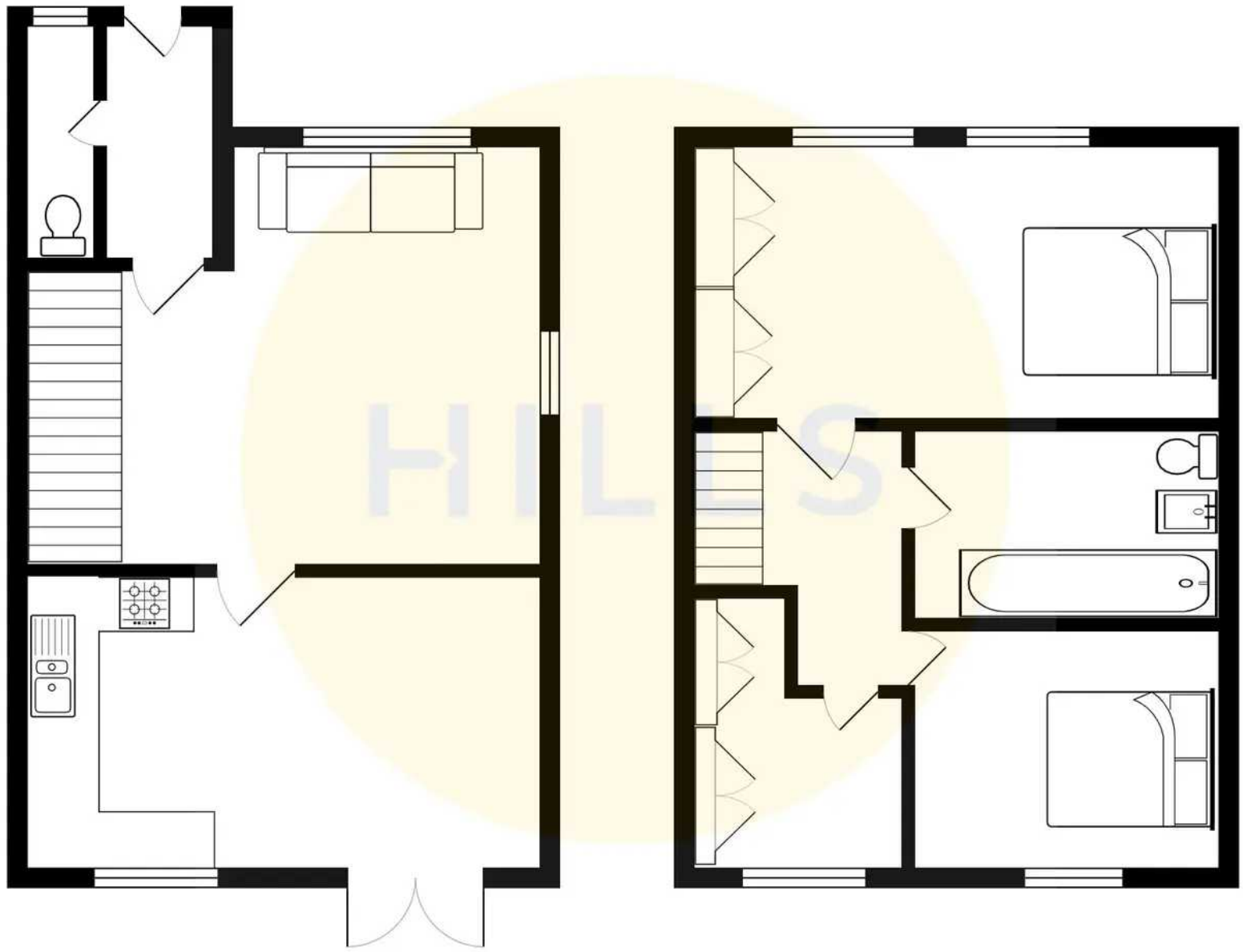
HILLS





HILLS







## Hills | Salfords Estate Agent

Hills Residential, Sentinel House Albert Street – M30 0SS

0161 707 4900

[sales@hills.agency](mailto:sales@hills.agency)

[www.hills.agency/](http://www.hills.agency/)



THE PROPERTY MISDESCRIPTIONS ACT 1991 The Agent has not tested any apparatus, equipment, fixtures and fittings or services and so cannot verify that they are in working order or fit for the purpose. A Buyer is advised to obtain verification from their Solicitor or Surveyor. References to the Tenure of a Property are based on information supplied by the Seller. The Agent has not had sight of the title documents. A Buyer is advised to obtain verification from their Solicitor. You are advised to check the availability of this property before travelling any distance to view. Every effort and precaution has been made to ensure these particulars are correct and not misleading but their accuracy is not guaranteed nor do they form part of any contract. If there is any point which is of particular importance to you, please contact us and we will provide any information you require. This is advisable, particularly if you intend to travel some distance to view the property. The mention of any appliances and services within these details does not imply that they are in full and efficient working order. These particulars are in draft form awaiting Vendors confirmation of their accuracy. These details must therefore be taken as a guide only.