



Willan Road, Eccles

Manchester



Offers in Region of **£150,000**

Willan Road

Eccles, Manchester

Fantastic chain-free, two bed terrace with original features, two receptions, fitted kitchen, two double bedrooms, bathroom. Perfect for adding personal touch, convenient location, close to amenities & transport links.

Council Tax band: A

Tenure: Freehold

- Two Bedroom Terrace Property
- Perfectly Located Close to Excellent Local Amenities
- Two Reception Rooms
- Fitted Kitchen
- Two Double Bedrooms & Fitted Bathroom Suite
- Offered with No Vendor Chain
- Potential to Increase Value



Entrance Hallway

Entered via a uPVC front door. Complete with a ceiling light point, double glazed window and laminate flooring.

Reception Room One

10' 1" x 9' 9" (3.07m x 2.97m)

Complete with a ceiling light point, double glazed window and wall mounted radiator. Fitted with laminate flooring.

Reception Room Two

13' 6" x 12' 7" (4.11m x 3.84m)

Complete with a ceiling light point, double glazed window and wall mounted radiator. Fitted with laminate flooring.

Kitchen

8' 0" x 5' 3" (2.44m x 1.60m)

Featuring wall and base units with integral stainless steel sink. Space for washer, fridge freezer and cooker. Complete with a ceiling light point, double glazed window and boiler. Fitted with hardwood door, part tiled walls and tiled flooring.

Landing

Complete with a ceiling light point and laminate flooring. Loft access.

Bedroom One

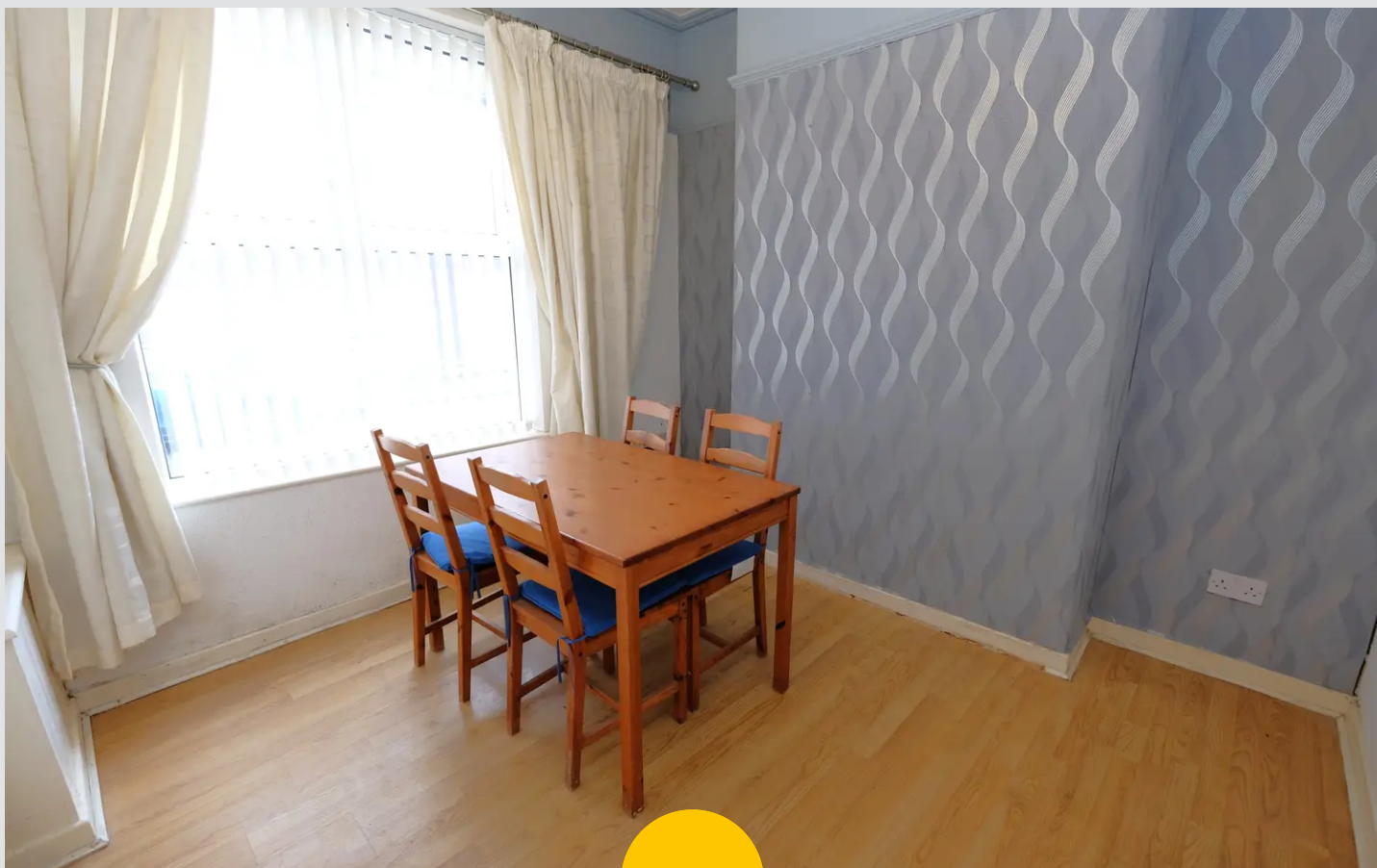
13' 6" x 9' 9" (4.11m x 2.97m)

Complete with a ceiling light point, double glazed window and wall mounted radiator. Fitted with laminate flooring.

Bedroom Two

12' 7" x 8' 9" (3.84m x 2.67m)

Complete with a ceiling light point, double glazed window and wall mounted radiator. Fitted with laminate flooring.



HILLS



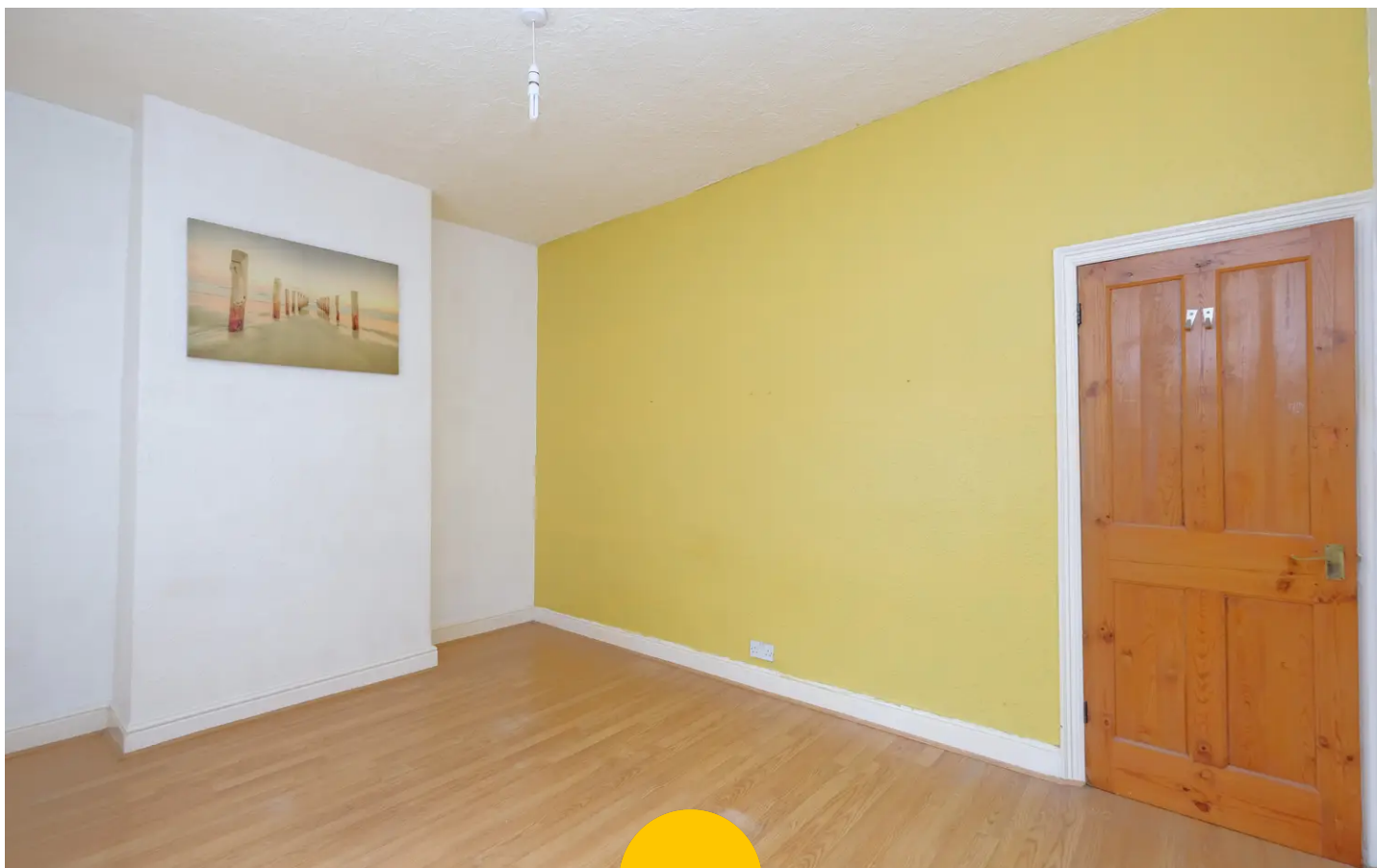
Bathroom

5' 3" x 7' 9" (1.60m x 2.36m)

Featuring a three-piece suite including a bathtub, hand wash basin and W.C. Complete with a ceiling light point, double glazed window and wall mounted radiator. Fitted with part tiled walls and lino flooring.

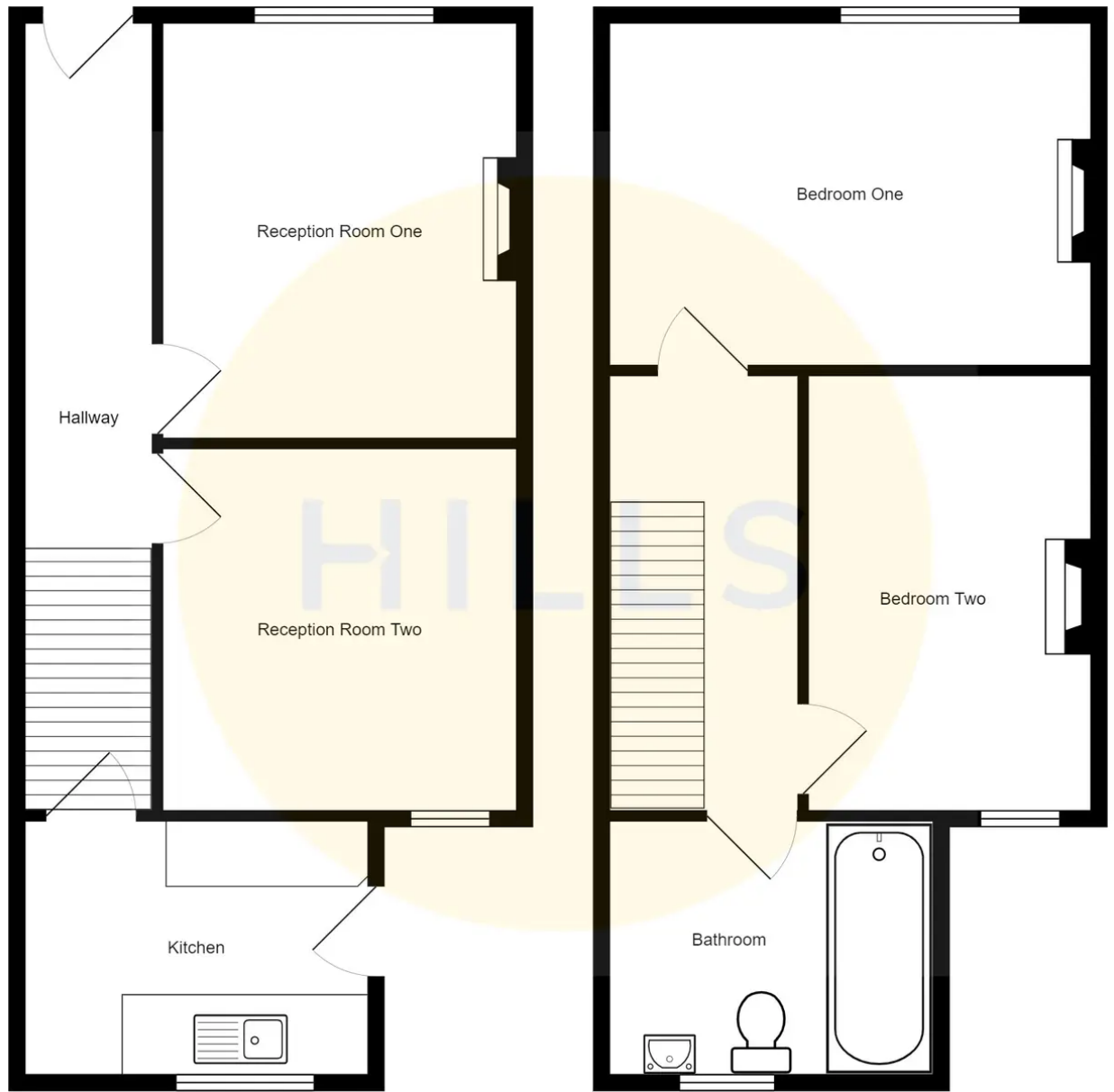
External

To the rear of the property is a concreted garden which gets the afternoon sun. Gated access.



HILLS







HILLS

Hills | Salfords Estate Agent

Hills Residential, Sentinel House Albert Street - M30 0SS

0161 707 4900

sales@hills.agency

www.hills.agency/



THE PROPERTY MISDESCRIPTIONS ACT 1991 The Agent has not tested any apparatus, equipment, fixtures and fittings or services and so cannot verify that they are in working order or fit for the purpose. A Buyer is advised to obtain verification from their Solicitor or Surveyor. References to the Tenure of a Property are based on information supplied by the Seller. The Agent has not had sight of the title documents. A Buyer is advised to obtain verification from their Solicitor. You are advised to check the availability of this property before travelling any distance to view. Every effort and precaution has been made to ensure these particulars are correct and not misleading but their accuracy is not guaranteed nor do they form part of any contract. If there is any point which is of particular importance to you, please contact us and we will provide any information you require. This is advisable, particularly if you intend to travel some distance to view the property. The mention of any appliances and services within these details does not imply that they are in full and efficient working order. These particulars are in draft form awaiting Vendors confirmation of their accuracy. These details must therefore be taken as a guide only.