

Dartford Avenue, Eccles

Manchester



In Excess of £280,000

Dartford Avenue

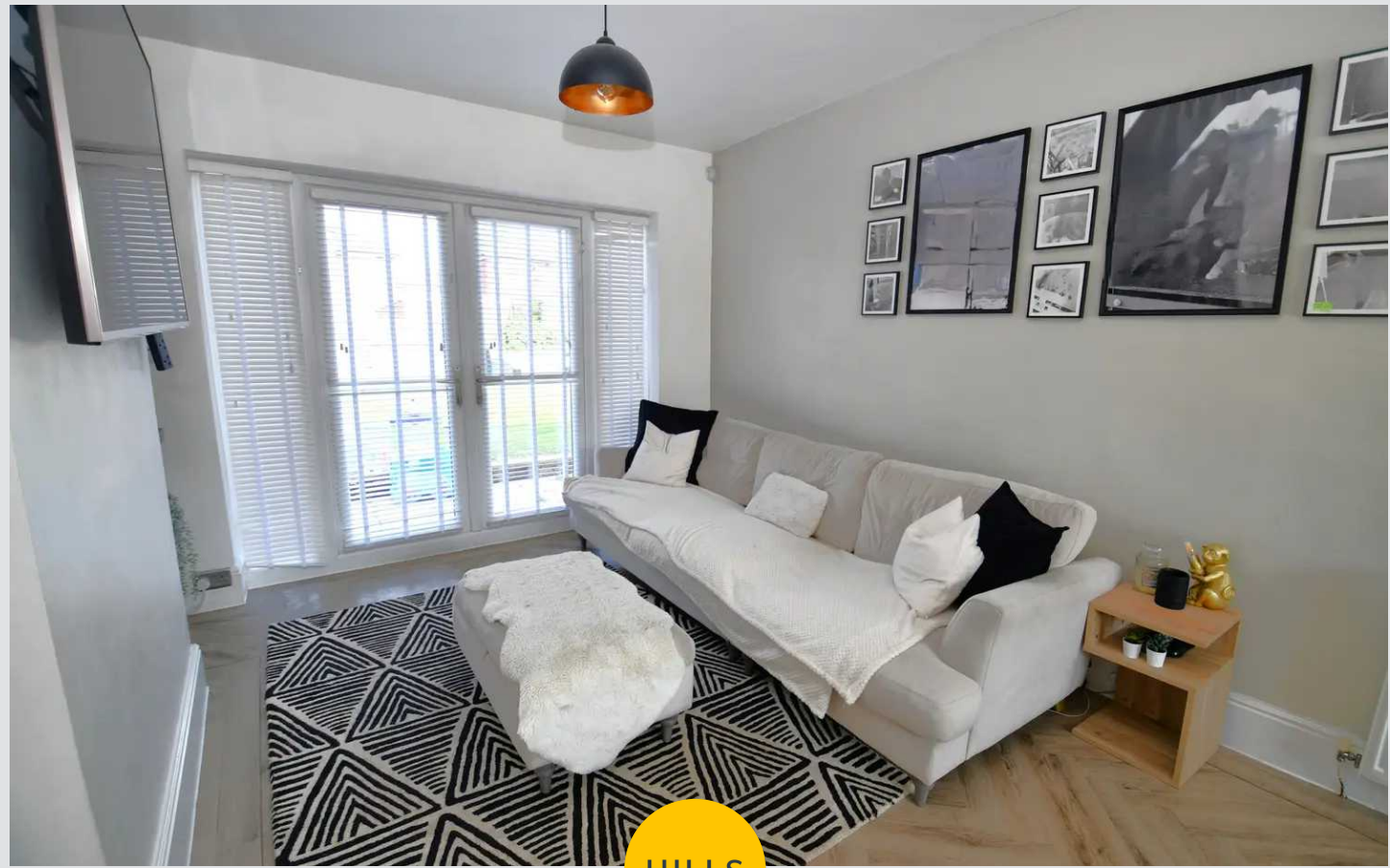
Eccles, Manchester

Stunning, extended three bedroom semi in Winton Village. Open plan living, stylish kitchen, three double bedrooms. Well-kept gardens, close to amenities & award-winning park. Ideal family home in great location.

Council Tax band: B

Tenure: Leasehold

- Beautifully Presented Semi Detached Property with a Double Story Extension
- Open Plan Lounge & Dining Space with French Doors
- Stunning Newly Fitted Kitchen
- Three Generous Bedrooms & Newly Installed Bathroom
- Tucked Away on a Cul De Sac within the Desirable Winton Village
- Well Kept Gardens to the Front & Rear
- Perfectly Located Close to Excellent Schooling, Shops, Parks & Fantastic Transport Links



Entrance Hallway

A bright entrance hallway featuring a laminate vinyl tiled flooring.

Living Room

10' 10" x 23' 8" (3.29m x 7.21m)

Featuring a ceiling light point, double glazed rear bay window, radiator. Complete with patio rear doors. Fitted with laminate vinyl flooring.

Kitchen

7' 3" x 14' 4" (2.21m x 4.38m)

Featuring bright ceiling spotlights, wall and base units. Integrated hob and double oven. Space for washing machine, fridge freezer. Complete with patio rear doors. Fitted with laminate vinyl flooring.

Bedroom One

12' 1" x 10' 9" (3.69m x 3.28m)

Featuring ceiling light point, radiator, double glazed bay window. Fitted with laminate flooring.

Bedroom Two

10' 10" x 8' 0" (3.30m x 2.43m)

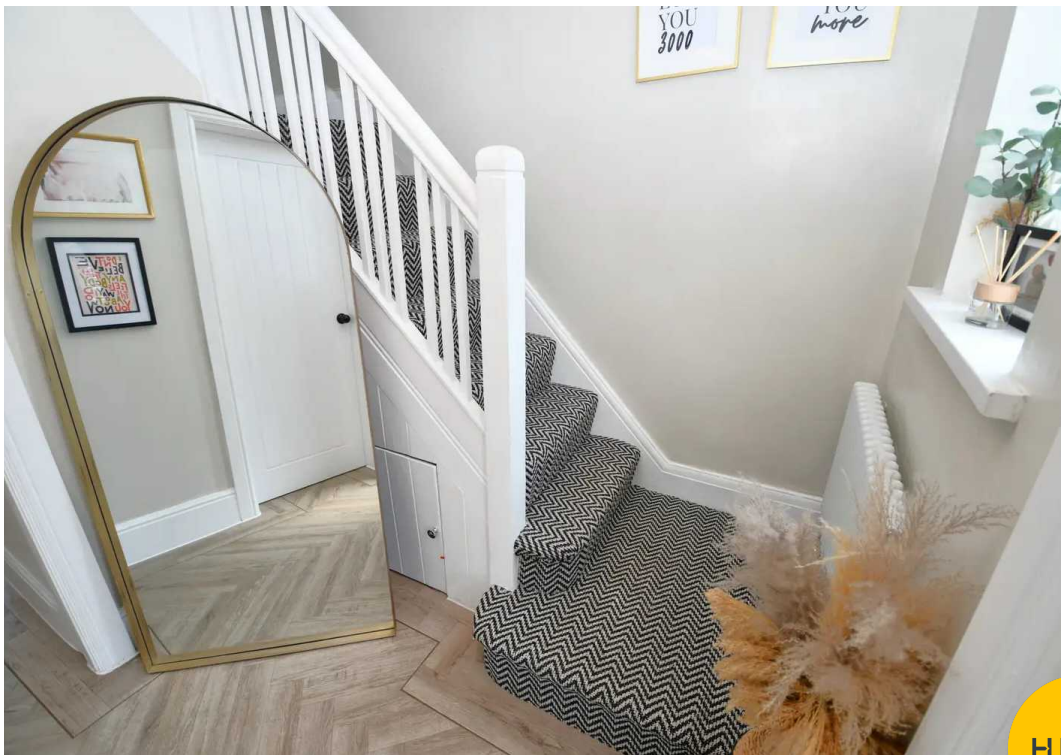
Featuring ceiling light point, radiator, double glazed rear window. Fitted with laminate flooring.

Bedroom Three

14' 6" x 7' 9" (4.41m x 2.36m)

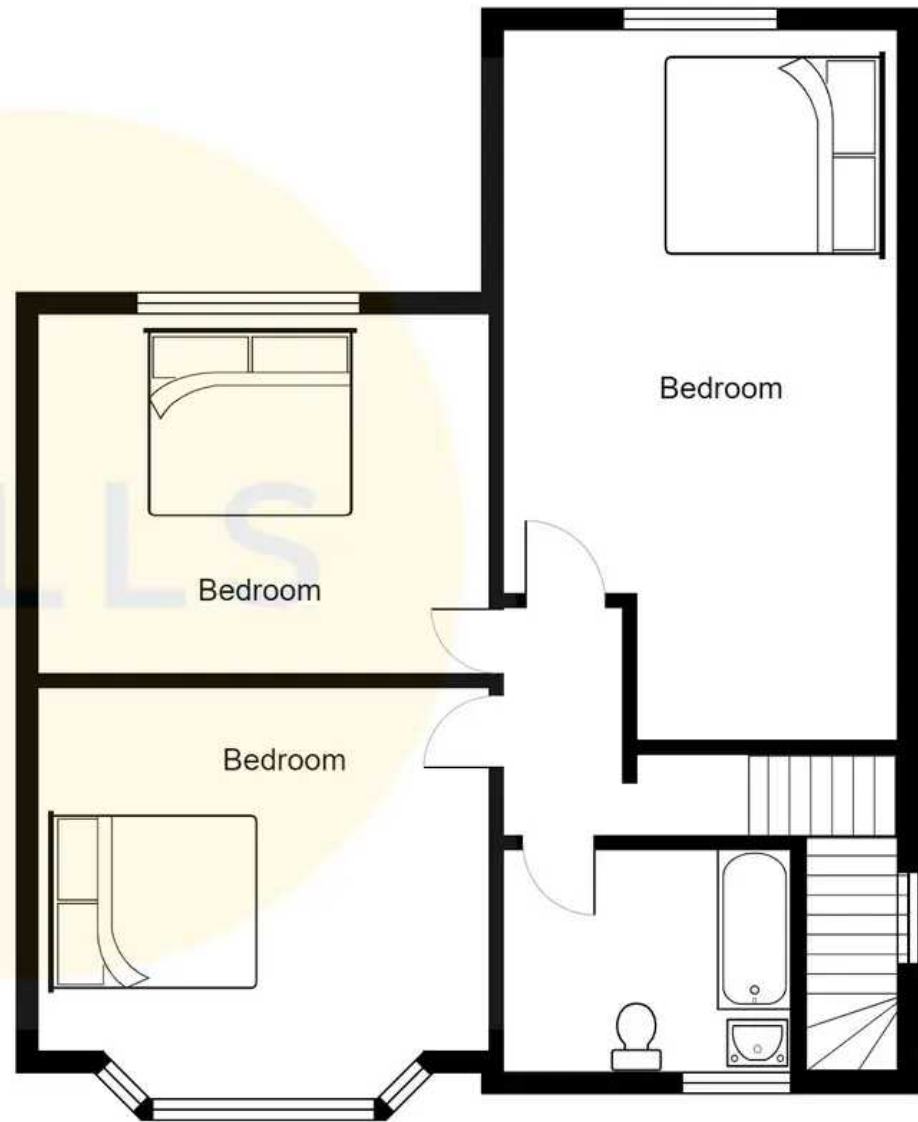
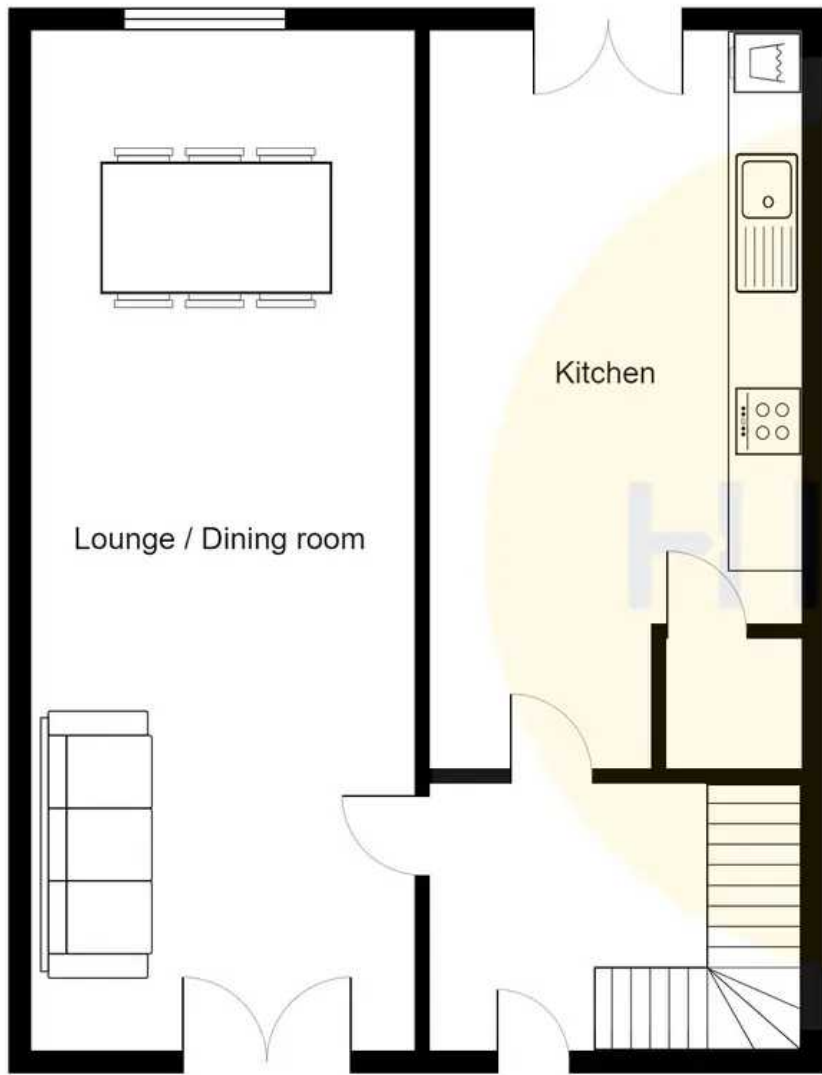
Featuring ceiling light point, radiator, double glazed rear window. Fitted with laminate flooring.





HILLS







Hills | Salfords Estate Agent

Hills Residential, Sentinel House Albert Street – M30 0SS

0161 707 4900

sales@hills.agency

www.hills.agency/



THE PROPERTY MISEDDESCRIPTIONS ACT 1991 The Agent has not tested any apparatus, equipment, fixtures and fittings or services and so cannot verify that they are in working order or fit for the purpose. A Buyer is advised to obtain verification from their Solicitor or Surveyor. References to the Tenure of a Property are based on information supplied by the Seller. The Agent has not had sight of the title documents. A Buyer is advised to obtain verification from their Solicitor. You are advised to check the availability of this property before travelling any distance to view. Every effort and precaution has been made to ensure these particulars are correct and not misleading but their accuracy is not guaranteed nor do they form part of any contract. If there is any point which is of particular importance to you, please contact us and we will provide any information you require. This is advisable, particularly if you intend to travel some distance to view the property. The mention of any appliances and services within these details does not imply that they are in full and efficient working order. These particulars are in draft form awaiting Vendors confirmation of their accuracy. These details must therefore be taken as a guide only.