



Doveleys Road

Salford



In Excess of **£400,000**

Doveleys Road

Salford

A prestigious, four bedroom semi-detached family home, situated on a prominent plot in a popular residential area. Featuring beautifully maintained, mature gardens to the front and rear, a driveway to the side providing ample off-road parking, along with a detached garage

Council Tax band: D

Tenure: Leasehold

- Prestigious, Four Bedroom Semi-Detached Family Home on a Generous Plot
- Situated in a Popular Residential Area, Within Easy Access of Salford Royal Hospital
- Bay-Fronted Dining Room and a Large Family Lounge
- Large Kitchen Diner and a Generously-Sized, Four-Piece Family Bathroom
- Four Double Bedrooms, with an Ensuite to the Main Bedroom
- Beautifully Presented Gardens to the Front and Rear, with Laid-to-Lawn Grass and Mature Plants
- Driveway to the Side Providing Ample Off-Road Parking, with the Added Benefit of a Detached Garage
- Within Easy Access of Amenities, Local Schooling and Transport Links Throughout Manchester
- Viewing is Highly Recommended to Appreciate the Potential of this Lovely Home!



Porch

Entrance Hallway

Complete with a ceiling light point, wall mounted radiator and carpet flooring.

Lounge

17' 9" x 12' 4" (5.42m x 3.77m)

Complete with a ceiling light point, two double glazed windows and two wall mounted radiators. Fitted with carpet flooring.

Dining Room

13' 4" x 10' 5" (4.07m x 3.18m)

Complete with a ceiling light point, double glazed window, two single glazed windows and wall mounted radiator. Fitted with carpet flooring.

Kitchen / Diner

17' 2" x 12' 6" (5.23m x 3.81m)

Featuring complementary fitted units with an integral fridge freezer. Space for washer and range cooker. Complete with a ceiling light point and three double glazed windows.

Landing

Complete with a ceiling light point, double glazed window and wall mounted radiator. Fitted with carpet flooring.

Bedroom One

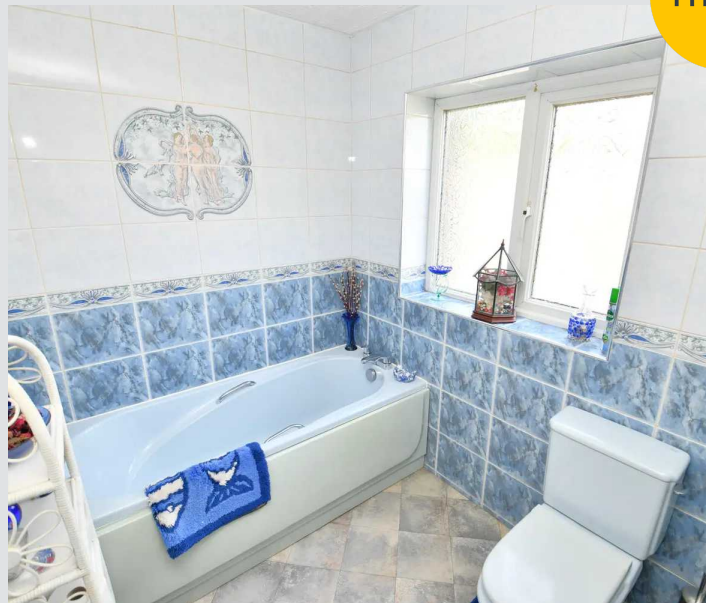
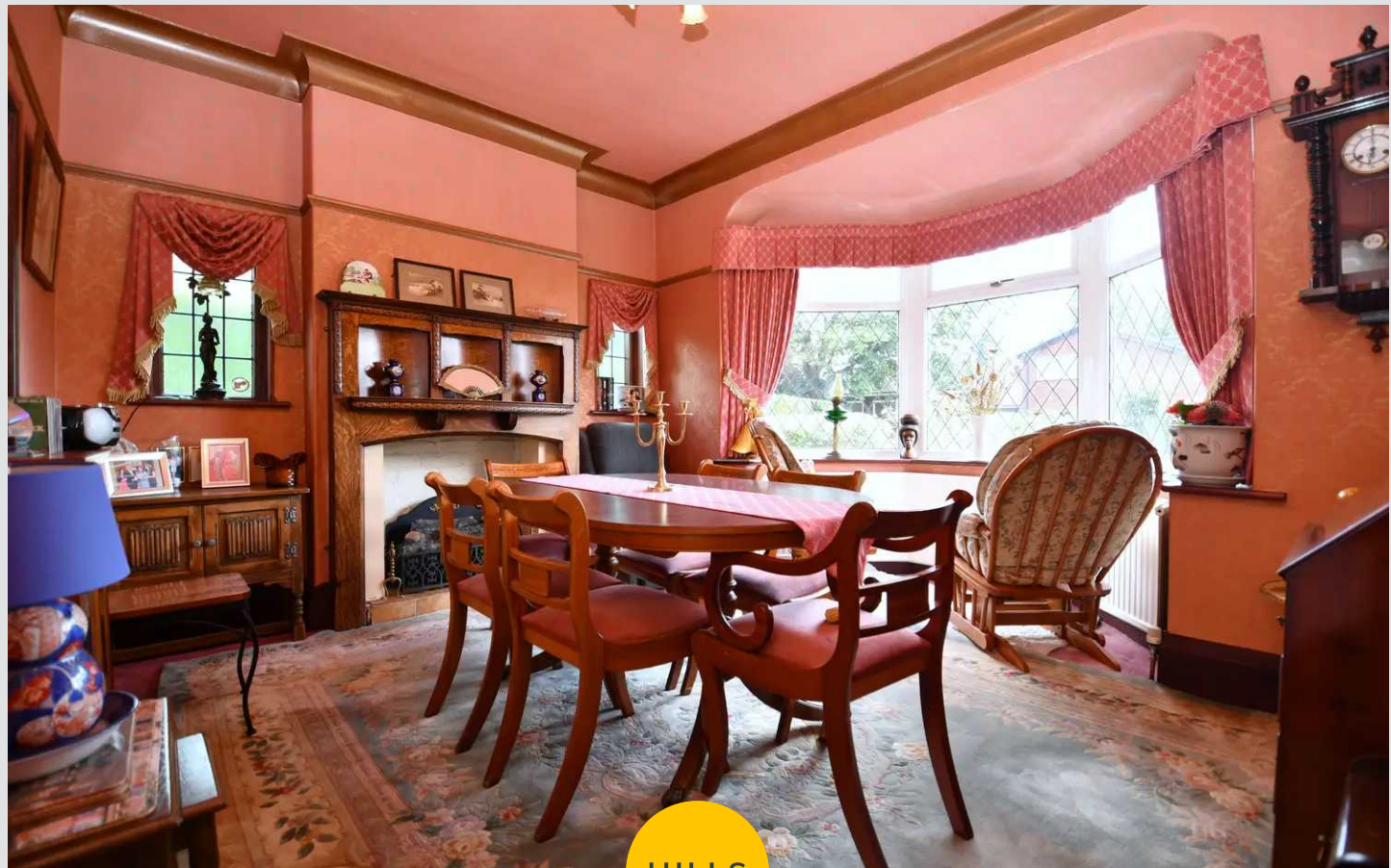
13' 3" x 10' 5" (4.05m x 3.17m)

Complete with a ceiling light point, double glazed bay window and wall mounted radiator. Fitted with carpet flooring.

En-suite

5' 10" x 4' 7" (1.78m x 1.40m)

Featuring a shower cubicle, hand wash basin and W.C. Complete with ceiling spotlights, double glazed window, tiled walls and carpet flooring.



Bedroom Two

11' 2" x 10' 8" (3.41m x 3.25m)

Complete with a ceiling light point, double glazed window and wall mounted radiator. Fitted with carpet flooring.

Bedroom Three

12' 4" x 9' 6" (3.77m x 2.89m)

Complete with a ceiling light point, double glazed window and wall mounted radiator. Fitted with carpet flooring.

Bedroom Four

11' 1" x 8' 6" (3.37m x 2.59m)

Complete with a ceiling light point, double glazed window and wall mounted radiator. Fitted with carpet flooring.

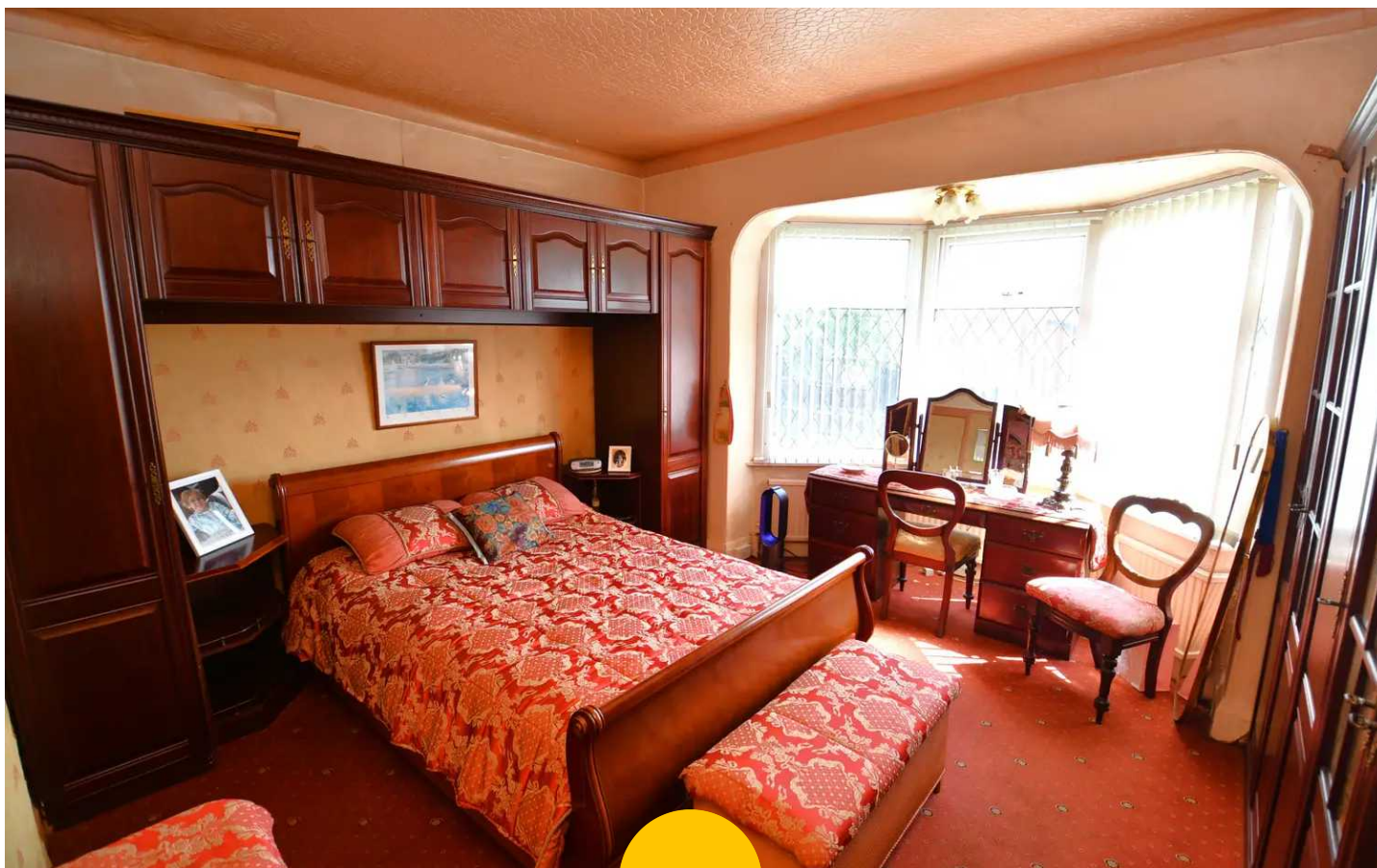
Bathroom

9' 7" x 5' 9" (2.93m x 1.74m)

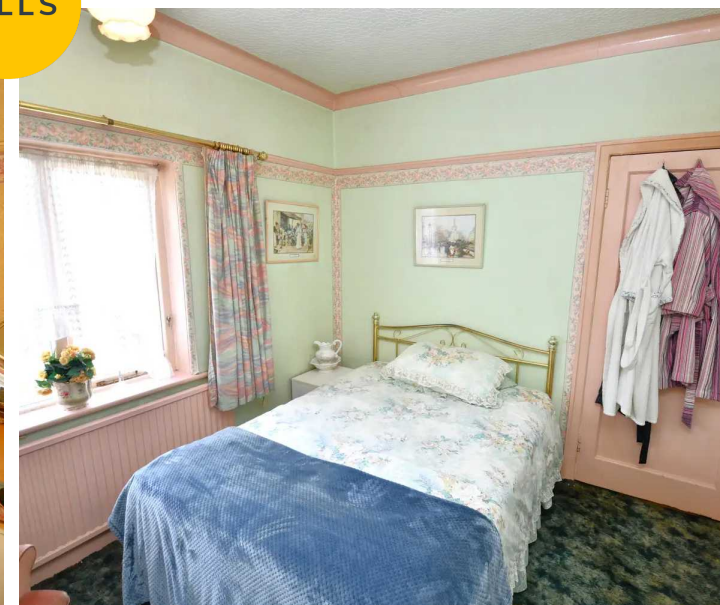
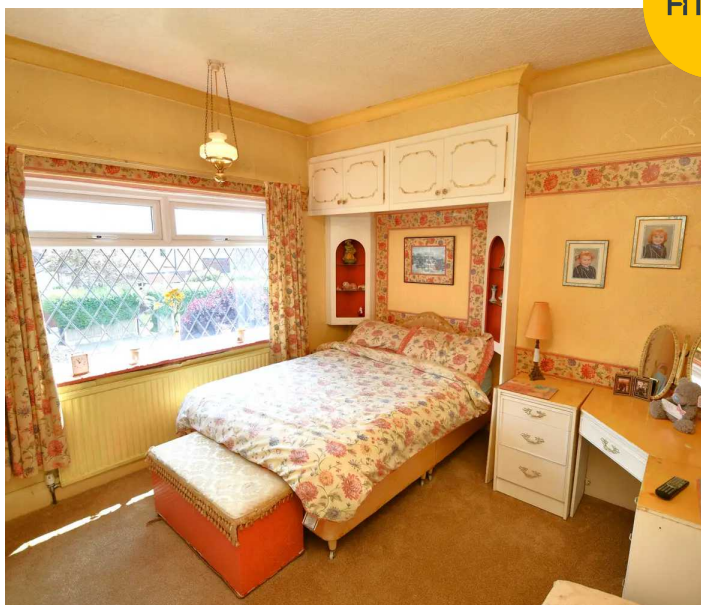
Featuring a four-piece suite including a bath, shower, hand wash basin and W.C. Complete with ceiling spotlights, double glazed window, tiled walls and cushioned flooring.

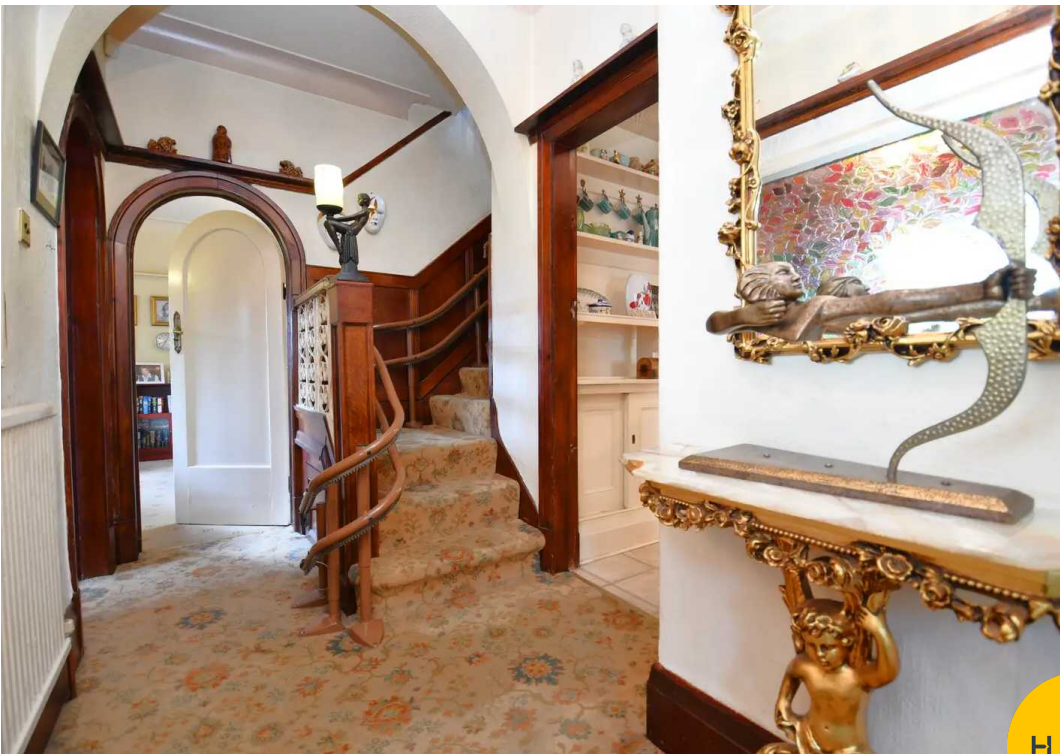
External

To the front of the property is a beautifully maintained garden with a large plot to the rear. Detached garage and driveway providing off-road parking.



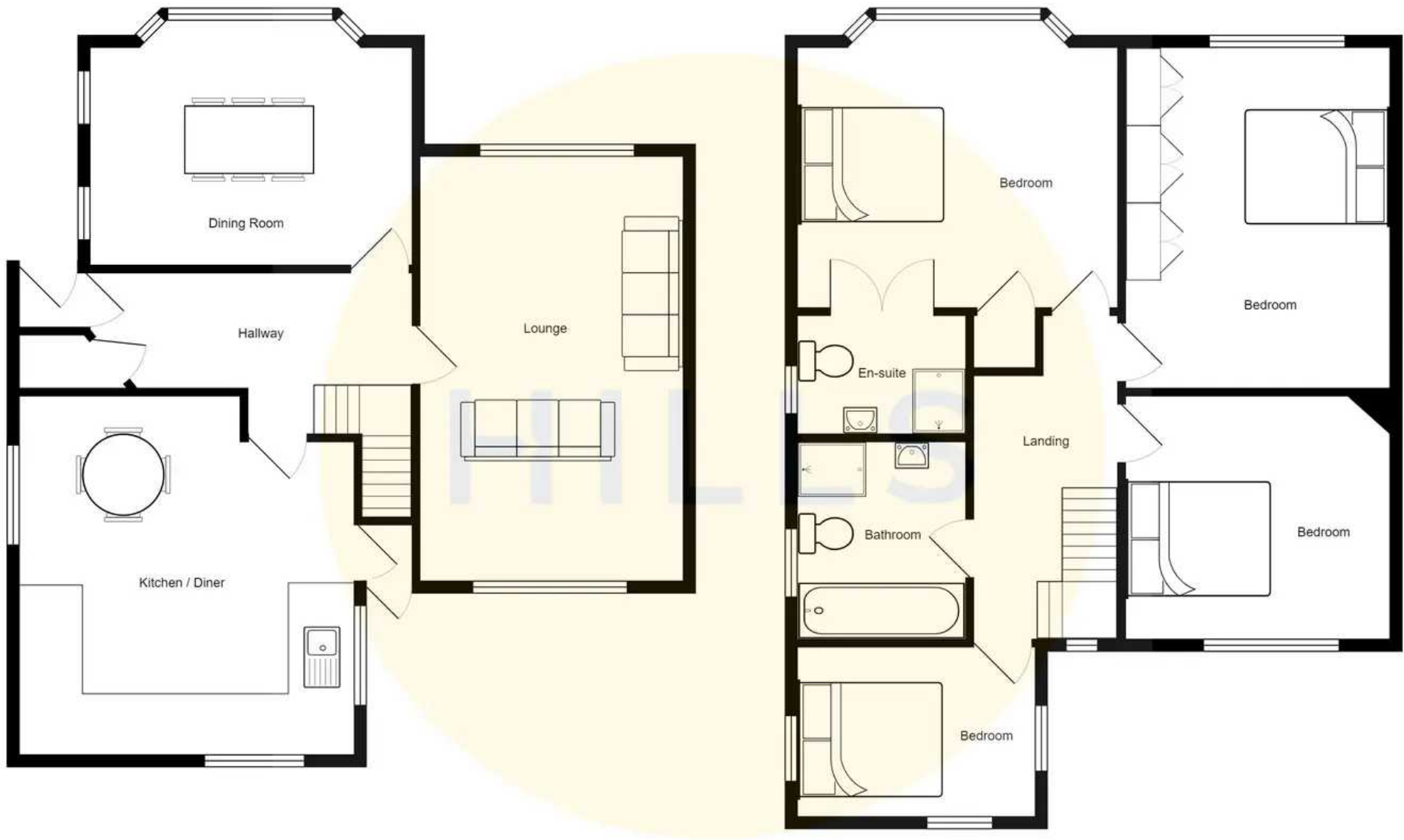
HILLS





HILLS







Hills | Salfords Estate Agent

Hills Residential, Sentinel House Albert Street – M30 0SS

0161 707 4900

sales@hills.agency

www.hills.agency/



THE PROPERTY MISDESCRIPTIONS ACT 1991 The Agent has not tested any apparatus, equipment, fixtures and fittings or services and so cannot verify that they are in working order or fit for the purpose. A Buyer is advised to obtain verification from their Solicitor or Surveyor. References to the Tenure of a Property are based on information supplied by the Seller. The Agent has not had sight of the title documents. A Buyer is advised to obtain verification from their Solicitor. You are advised to check the availability of this property before travelling any distance to view. Every effort and precaution has been made to ensure these particulars are correct and not misleading but their accuracy is not guaranteed nor do they form part of any contract. If there is any point which is of particular importance to you, please contact us and we will provide any information you require. This is advisable, particularly if you intend to travel some distance to view the property. The mention of any appliances and services within these details does not imply that they are in full and efficient working order. These particulars are in draft form awaiting Vendors confirmation of their accuracy. These details must therefore be taken as a guide only.