



Elleray Road, Salford

Salford



£260,000

# 56 Elleray Road

Salford, Salford

Situated on the popular Irlam o' th' Height is this **STYLISH**, period, two bedroom property - which has an abundance of space, and the potential to reconfigure it into a three bedroom property! Featuring two large double bedrooms, a large modern bathroom and three reception rooms. Council Tax band: B

Tenure: Leasehold

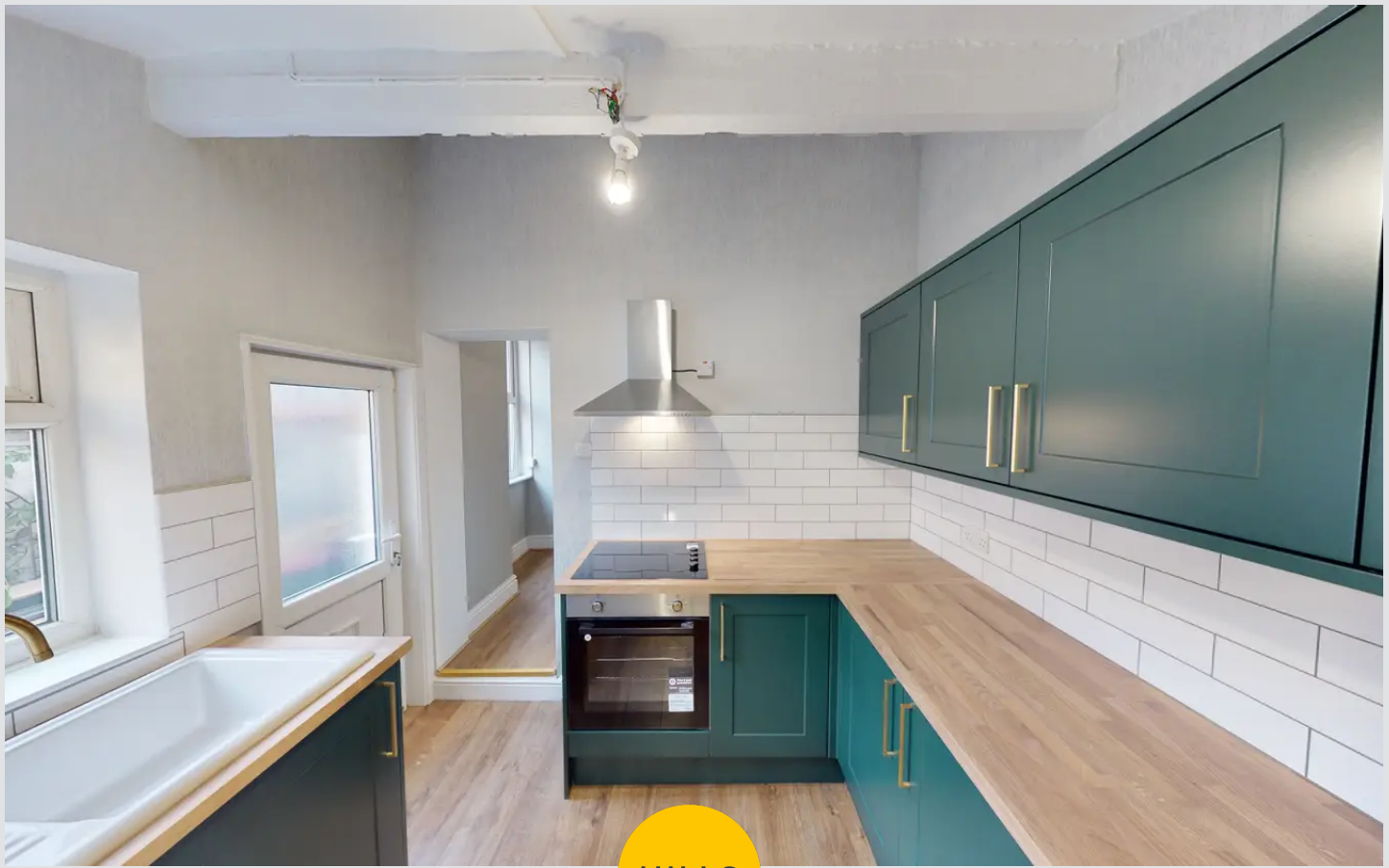
- Stylish, Period Two Bedroom Property, with the Potential to Reconfigure into a Three Bedroom Property
- Located in the Popular Irlam o' th' Height
- Bay-Fronted Lounge, Spacious Dining Room and an Additional Reception Room
- Modern Fitted Kitchen and a Large Three-Piece Bathroom
- Two Large Double Bedrooms and an Office
- Garden to the Front and a Low-Maintenance Yard to the Rear
- Close to Excellent Transport Links into Salford Quays, Media City and Manchester City Centre
- Within Easy Access of Local Schooling and Well-Kept Parks
- Viewing is Highly Recommended!



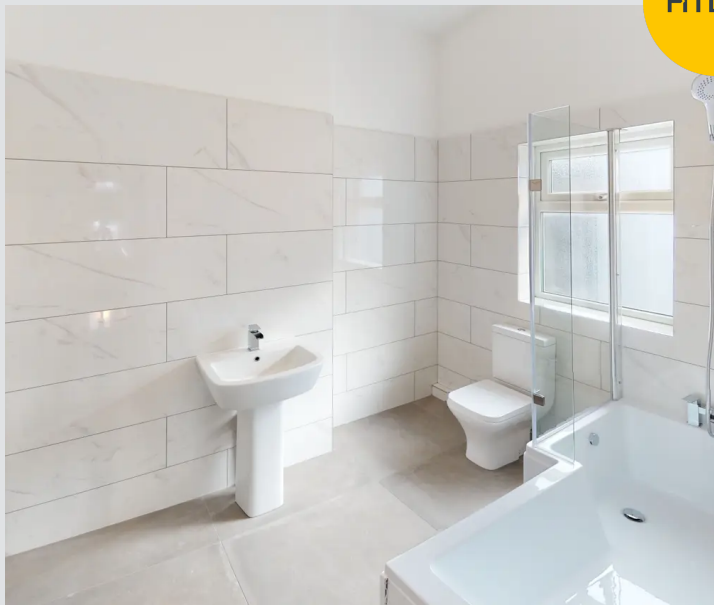


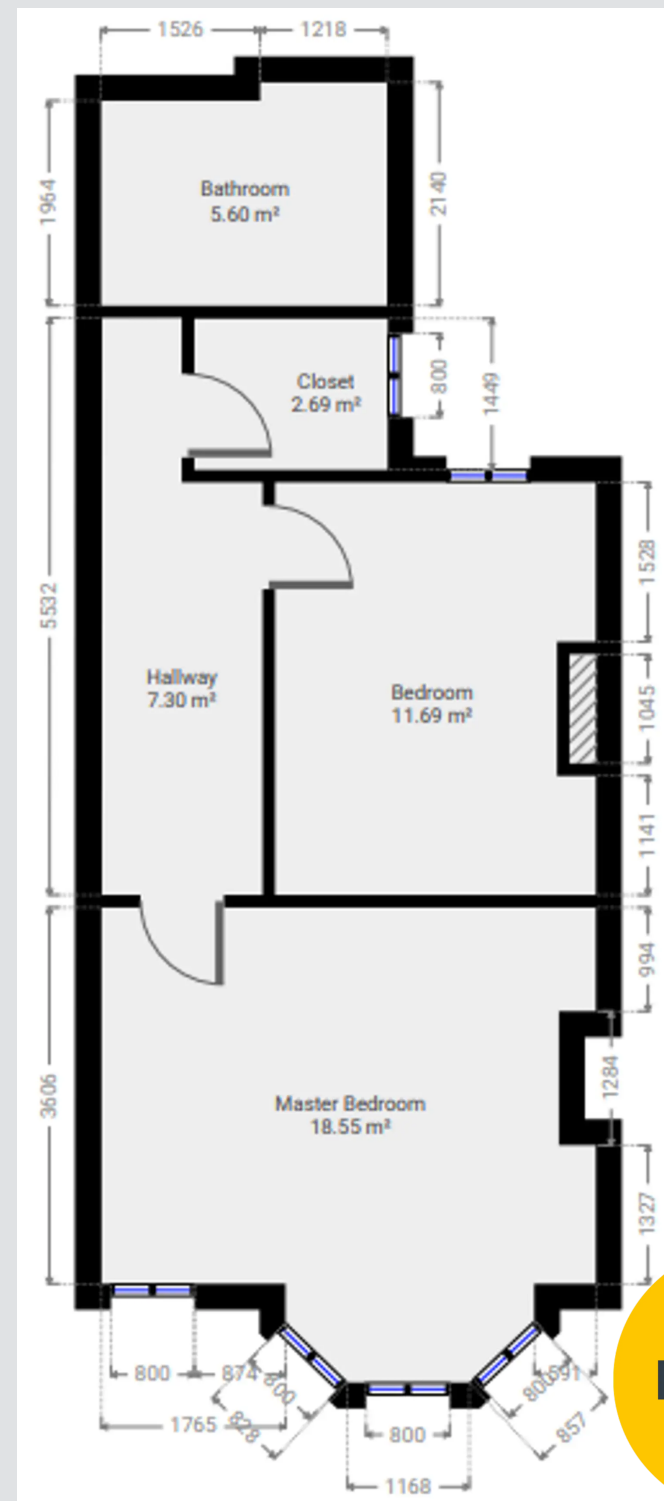
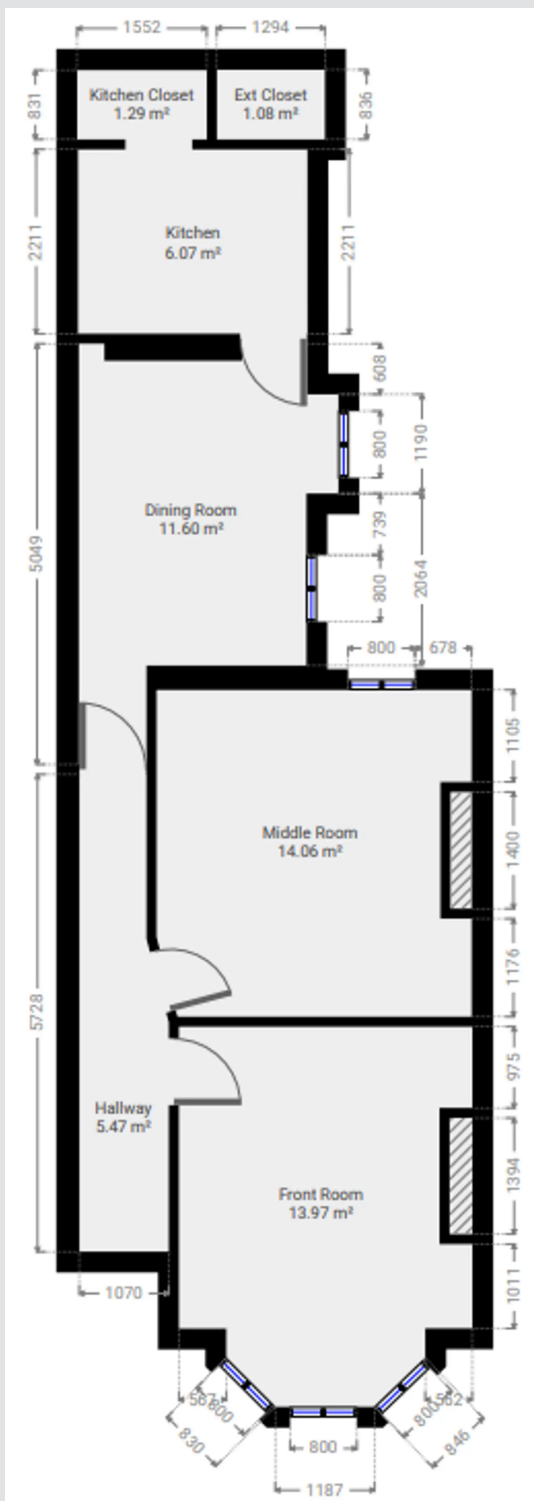
HILLS





HILLS







HILLS



You can include any text here. The text can be modified upon generating your brochure.

