

8 Fir Road, Swinton

Manchester



In Excess of £300,000

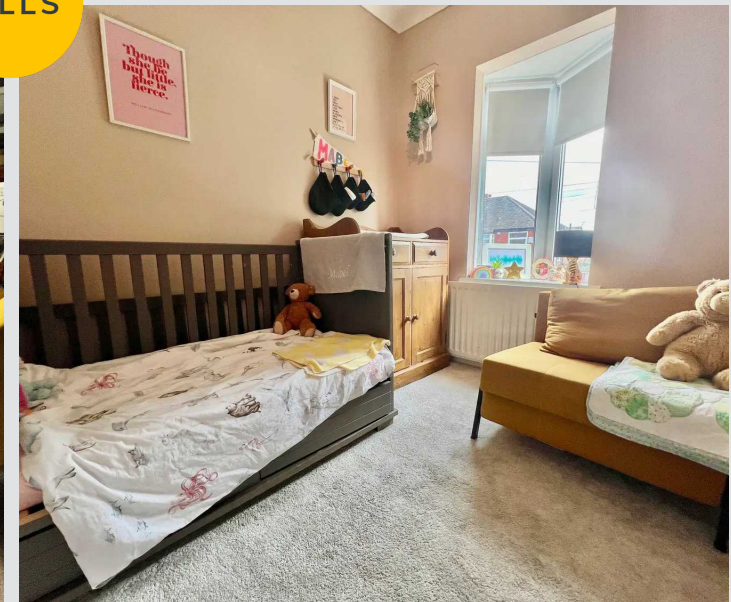
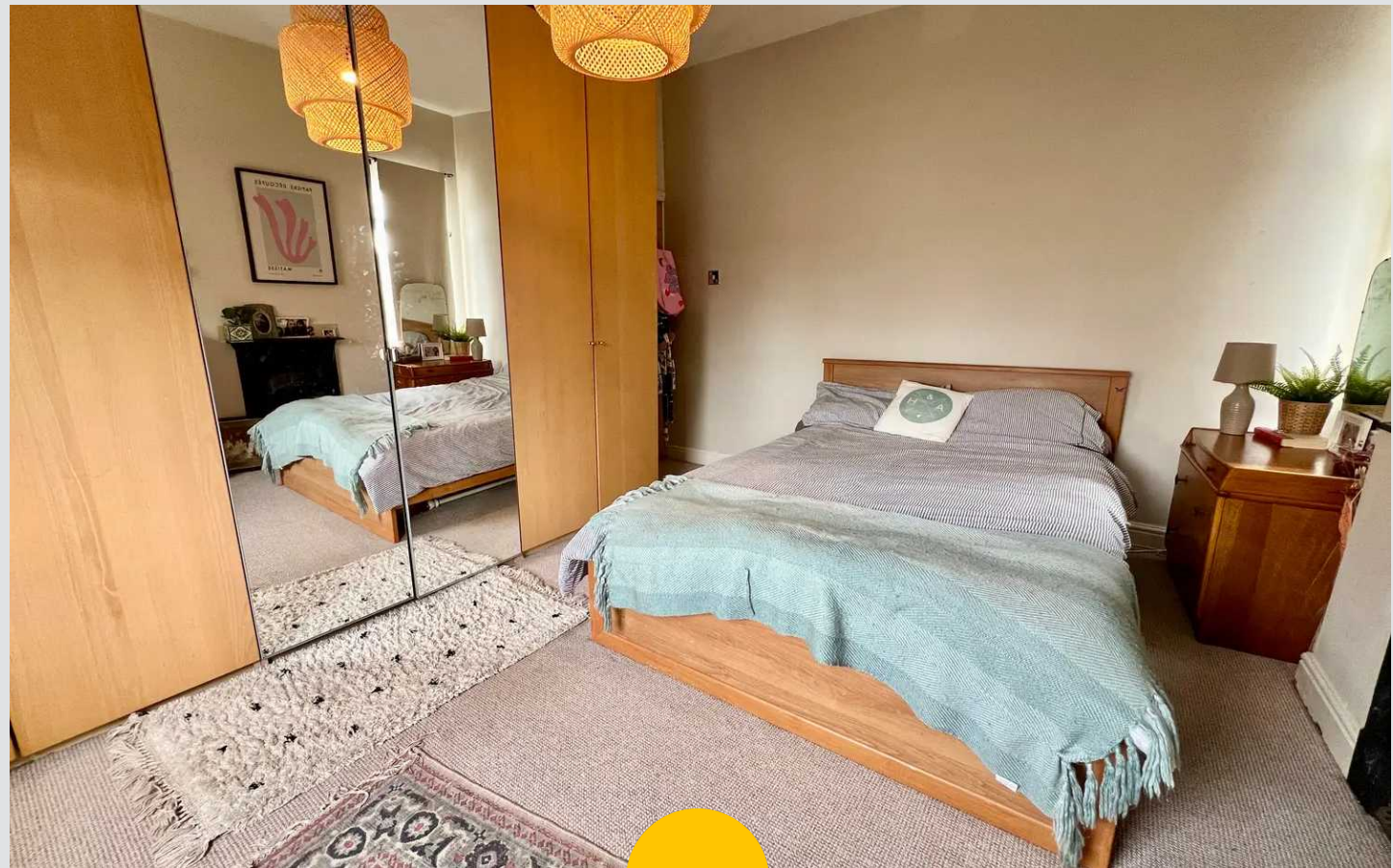
8 Fir Road

Swinton, Manchester

A VERY WELL PRESENTED EDWARDIAN END OF TERRACE HOUSE WITH LOTS OF ORIGINAL FEATURES! THREE LARGE BEDROOMS, SOUTH FACING GARDEN and SITUATED IN SOUTH SWINTON. THIS BEAUTIFUL FAMILY HOME is located close to excellent local schools and transport links and comes highly recommended for viewing! The property boasts a welcoming entrance hallway, A SPACIOUS BAY FRONTED LOUNGE and Council Tax band: B

Tenure: Leasehold

- EDWARDIAN END OF TERRACE HOUSE
- NEW KITCHEN FITTED IN 2019
- LOTS OF ORIGINAL FEATURES
- THREE BEDROOMS
- MULTI FUEL BURNER
- GAS CENTRAL HEATING
- LOW MAINTENANCE REAR GARDEN
- CLOSE TO MONTON VILLAGE



Hallway

13' 1" x 6' 7" (4.00m x 2.00m)

Lounge

14' 5" x 11' 10" (4.40m x 3.60m)

Kitchen and Dining room

13' 1" x 18' 1" (4.00m x 5.50m)

First Floor Landing

Bedroom One

13' 1" x 11' 10" (4.00m x 3.60m)

Bedroom Two

11' 10" x 10' 6" (3.60m x 3.20m)

Bedroom Three

8' 10" x 7' 3" (2.70m x 2.20m)

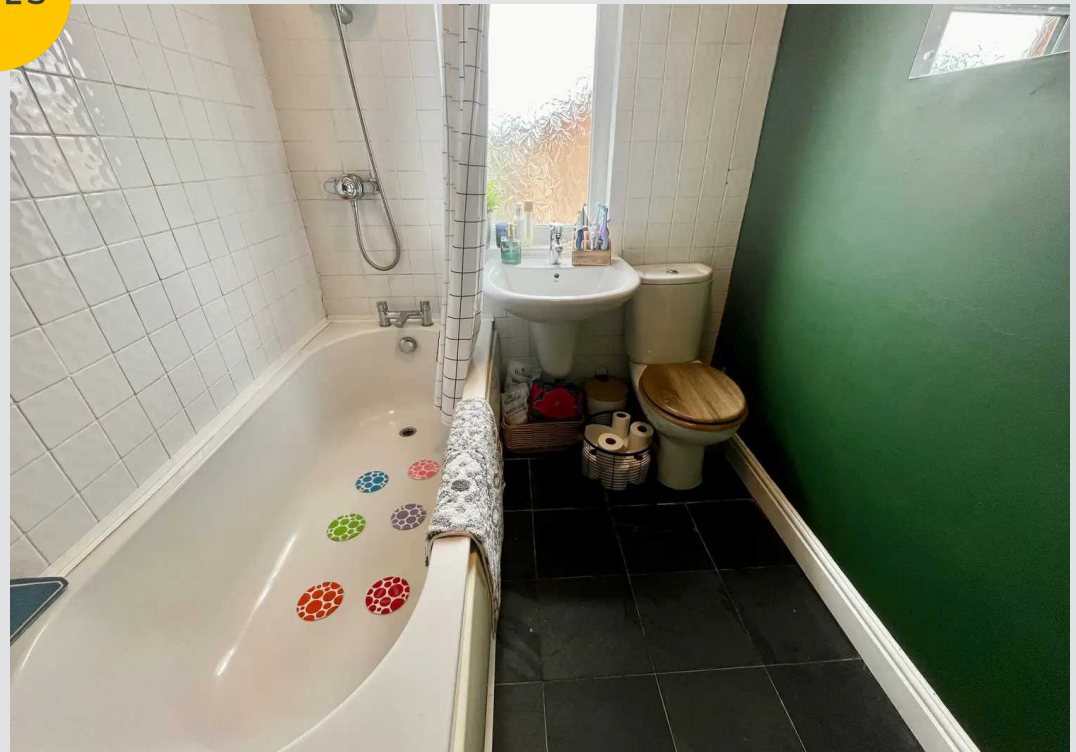
Family Bathroom

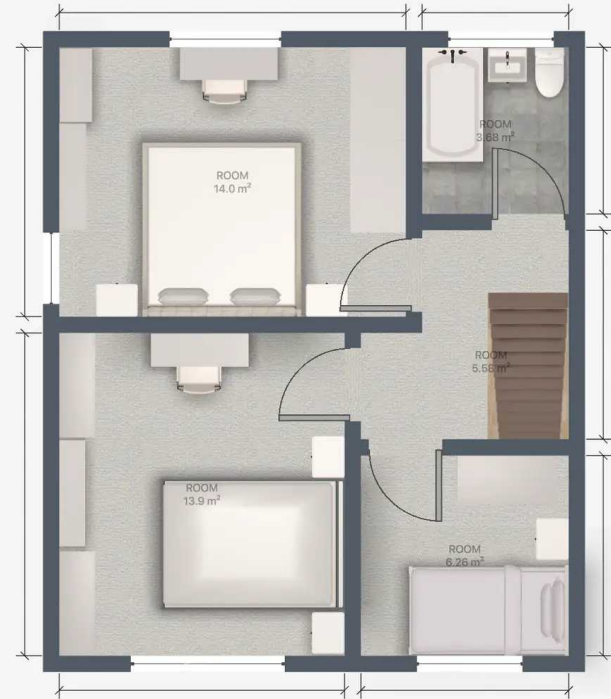
7' 3" x 5' 11" (2.20m x 1.80m)

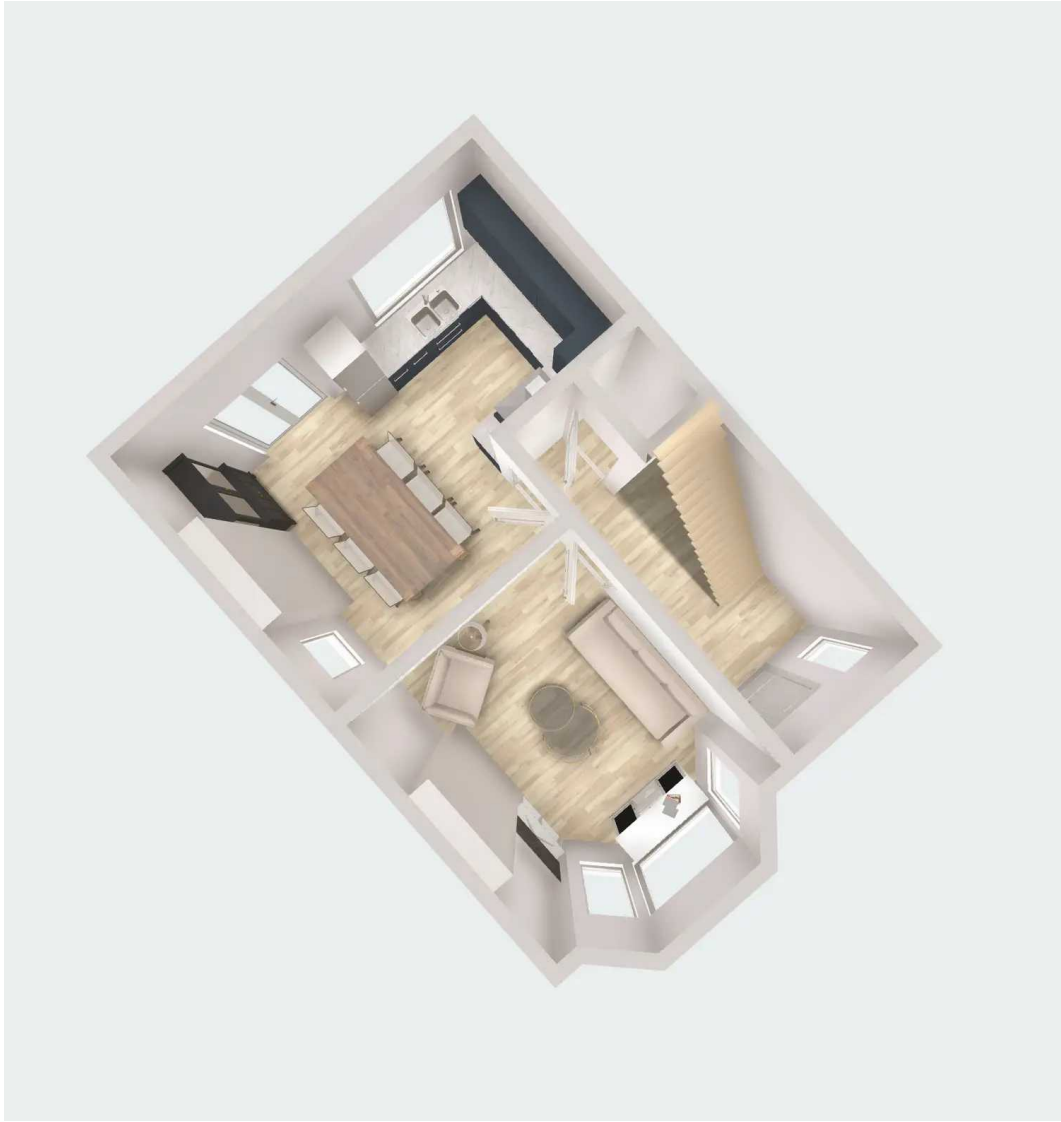




HILLS









Hills Swinton | Salfords Estate Agent

4 Pendlebury Road, Swinton - M27 4AR

0161 794 2888

swinton@hills.agency

www.hills.agency/



THE PROPERTY MISDESCRIPTIONS ACT 1991 The Agent has not tested any apparatus, equipment, fixtures and fittings or services and so cannot verify that they are in working order or fit for the purpose. A Buyer is advised to obtain verification from their Solicitor or Surveyor. References to the Tenure of a Property are based on information supplied by the Seller. The Agent has not had sight of the title documents. A Buyer is advised to obtain verification from their Solicitor. You are advised to check the availability of this property before travelling any distance to view. Every effort and precaution has been made to ensure these particulars are correct and not misleading but their accuracy is not guaranteed nor do they form part of any contract. If there is any point which is of particular importance to you, please contact us and we will provide any information you require. This is advisable, particularly if you intend to travel some distance to view the property. The mention of any appliances and services within these details does not imply that they are in full and efficient working order. These particulars are in draft form awaiting Vendors confirmation of their accuracy. These details must therefore be taken as a guide only.