

I Lands, Francis Avenue

Manchester



Offers in Region of £110,000

I Lands

Manchester

Spacious second floor apartment at the top of a Cul De Sac. Open-plan kitchen/living/dining with Juliet balcony. Two double bedrooms, en suite, allocated parking. Convenient location near amenities and transport links. Ideal for professionals, first-time buyers, or investors.

Tenure: Leasehold

- Spacious Second Floor Apartment, Tucked Away on a Cul De Sac
- Open Plan Kitchen, Living & Dining Space with Juliet Balcony
- Two Generous Double Bedrooms
- Three Piece Bathroom Suite & En Suite off the Master Bedroom
- Allocated Parking Space
- Gas Central Heated & Double Glazed Throughout
- Short Walk to Monton Village & Eccles Town Centre
- Excellently Positioned Close to Public Transport & Motorway Links
- Great First Buy or Investment



HILLS

Entrance Hallway

Featuring two ceiling light points, radiator, telecom. Complete with a hard wood door. Fitted with laminate flooring.

Lounge

24' 5" x 13' 5" (7.44m x 4.09m)

Featuring two double glazed windows, radiator, power point, French doors including Juliet balcony. Fitted with laminate flooring.

Kitchen

Featuring ceiling light point, double glazed windows. Complete with wall and base units including gas hob, electric oven, fridge freezer, power point, boiler (10 years old). Space for washer. Fitted with part tiled walls, laminate flooring.

Bedroom One

11' 0" x 10' 5" (3.35m x 3.18m)

Featuring ceiling light point, double glazed window, radiator, power point. Fitted with laminate flooring.

En-suite

7' 7" x 3' 4" (2.31m x 1.02m)

Featuring two piece suite, shower cubicle, handwash basin, w/c. Complete with ceiling light point, extractor. Fitted with lino flooring.

Bedroom Two

3' 4" x 2' 6" (1.02m x 0.76m)

Featuring ceiling light point, double glazed windows, power point, radiator. Fitted with laminate flooring.

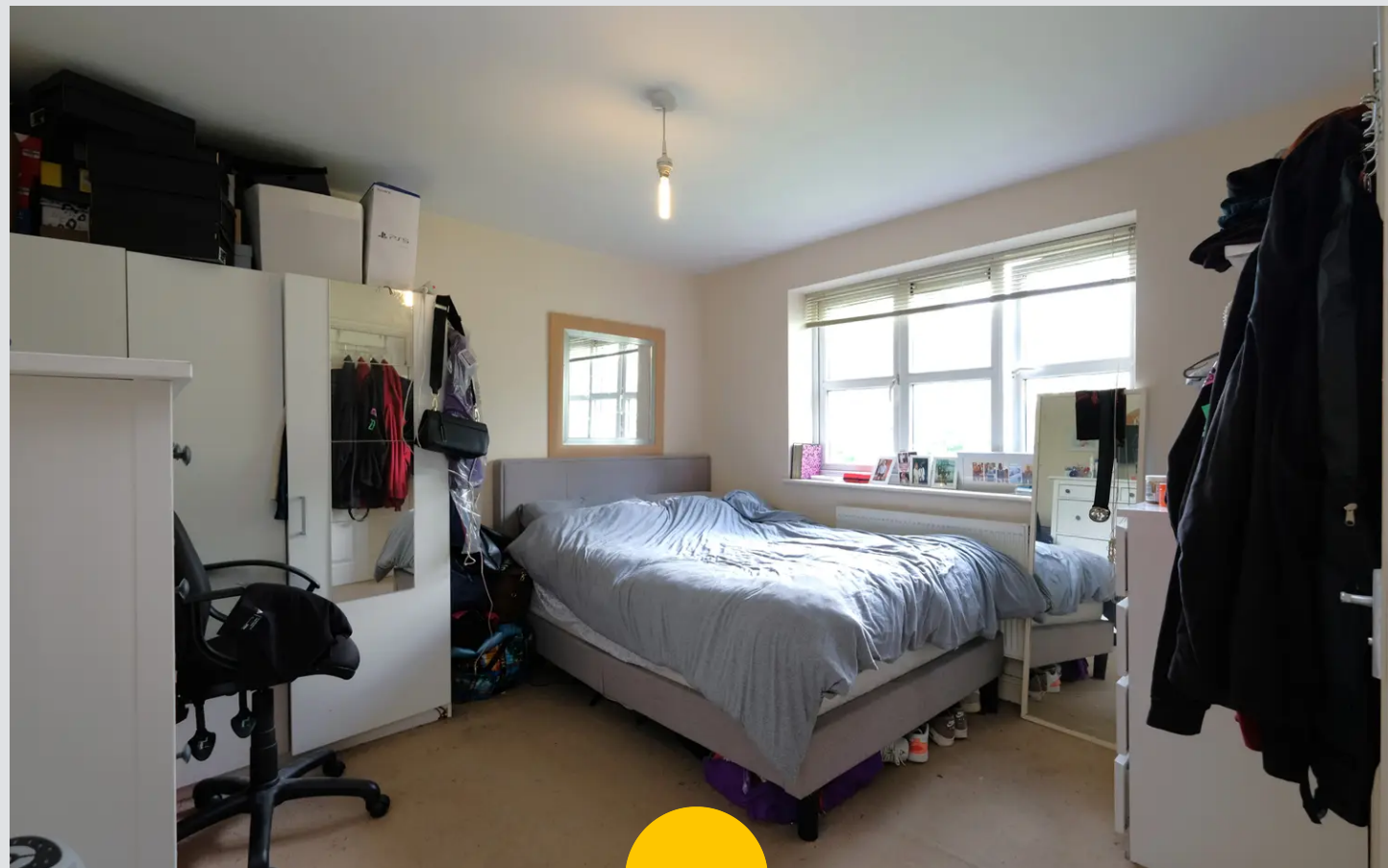
Bathroom

2' 2" x 1' 7" (0.66m x 0.48m)

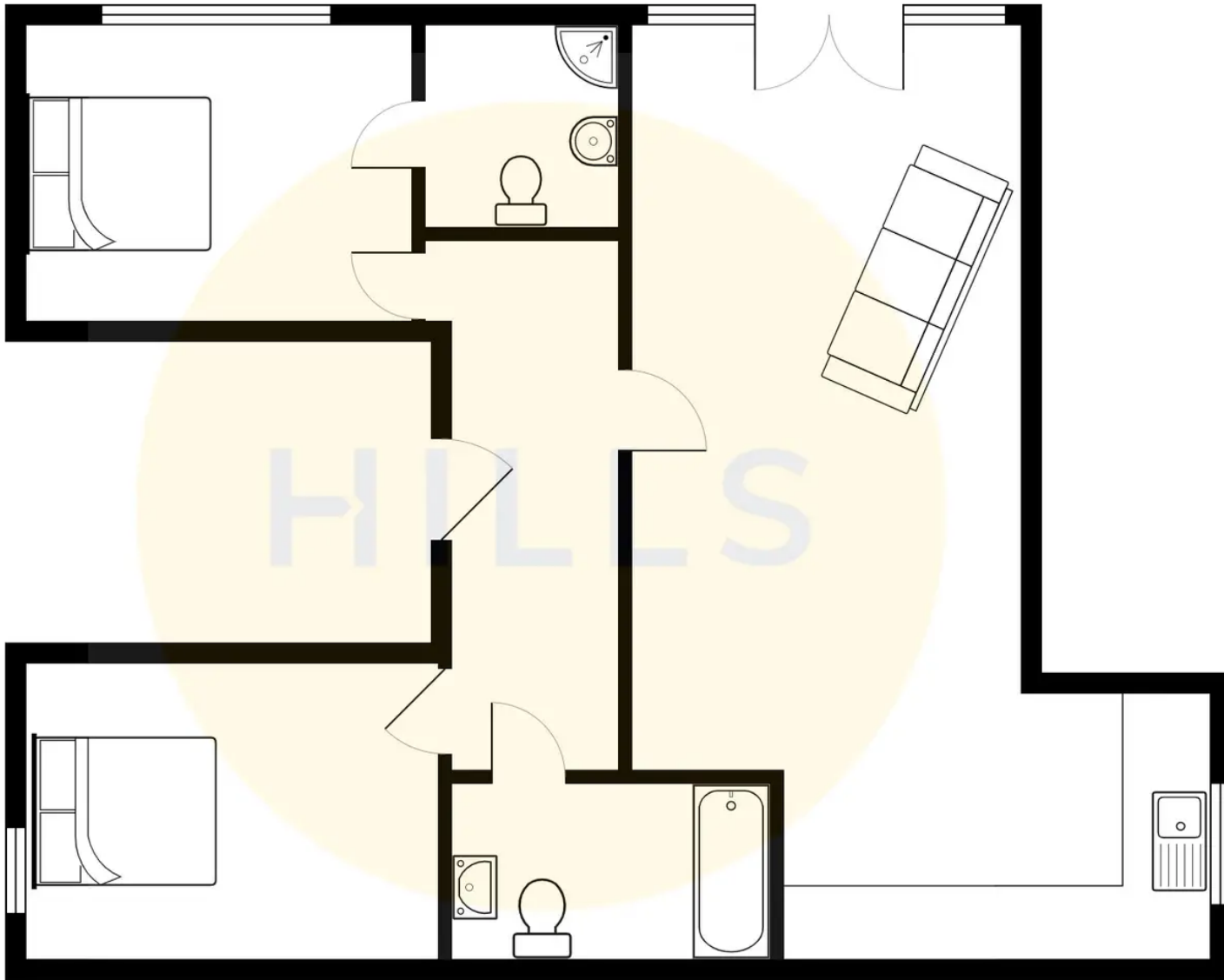
Featuring ceiling spotlights, double glazed windows, radiator. Complete with w/c, hand wash basin. Fitted with lino flooring, tiled splashback.

External

Featuring allocated parking outside the property.



HILLS





Hills | Salfords Estate Agent

Hills Residential, Sentinel House Albert Street - M30 0SS

0161 707 4900

sales@hills.agency

www.hills.agency/



THE PROPERTY MISDESCRIPTIONS ACT 1991 The Agent has not tested any apparatus, equipment, fixtures and fittings or services and so cannot verify that they are in working order or fit for the purpose. A Buyer is advised to obtain verification from their Solicitor or Surveyor. References to the Tenure of a Property are based on information supplied by the Seller. The Agent has not had sight of the title documents. A Buyer is advised to obtain verification from their Solicitor. You are advised to check the availability of this property before travelling any distance to view. Every effort and precaution has been made to ensure these particulars are correct and not misleading but their accuracy is not guaranteed nor do they form part of any contract. If there is any point which is of particular importance to you, please contact us and we will provide any information you require. This is advisable, particularly if you intend to travel some distance to view the property. The mention of any appliances and services within these details does not imply that they are in full and efficient working order. These particulars are in draft form awaiting Vendors confirmation of their accuracy. These details must therefore be taken as a guide only.