

Hardy Street, Eccles

Manchester



In Excess of £210,000

Hardy Street

Eccles, Manchester

Welcoming three bed mid-terraced home on quiet cul-de-sac. Ideal for families, first-time buyers, or investors. Spacious lounge, fitted kitchen, three generous bedrooms, and low maintenance gardens. Close to amenities and excellent transport links.

Council Tax band: A

Tenure: Leasehold

- Deceptively Spacious Terrace Property
- Situated on a Cul De Sac & Offered with No Vendor Chain
- Two Reception Rooms
- Fitted Kitchen & Bathroom
- Three Generous Bedrooms, Master Complete with Fitted Wardrobes
- Fully Double Glazed & Gas Central Heated
- Low Maintenance Gardens to the Front & Rear
- Perfectly Located Close to Amenities & Transport Links



Entrance Hallway

Entered via a uPVC front door. Complete with a ceiling light point, wall mounted radiator and laminate tile flooring.

Lounge

12' 8" x 10' 8" (3.86m x 3.25m)

Featuring an electric fire. Complete with a ceiling light point, double glazed window and wall mounted radiator. Fitted with laminate flooring.

Reception Room Two

11' 3" x 13' 2" (3.43m x 4.01m)

Featuring ceiling light point, double glazed window, power point, radiator. Fitted with laminate flooring.

Kitchen

12' 5" x 7' 8" (3.78m x 2.34m)

Featuring complementary wall and base units with stainless steel sink, gas hob and under stair storage. Space for fridge freezer, washer, electric oven. Complete with ceiling light point, double glazed window, power point. Fitted with laminate flooring.

Landing

Featuring ceiling light point, power point, radiator. Complete with loft access.

Bedroom One

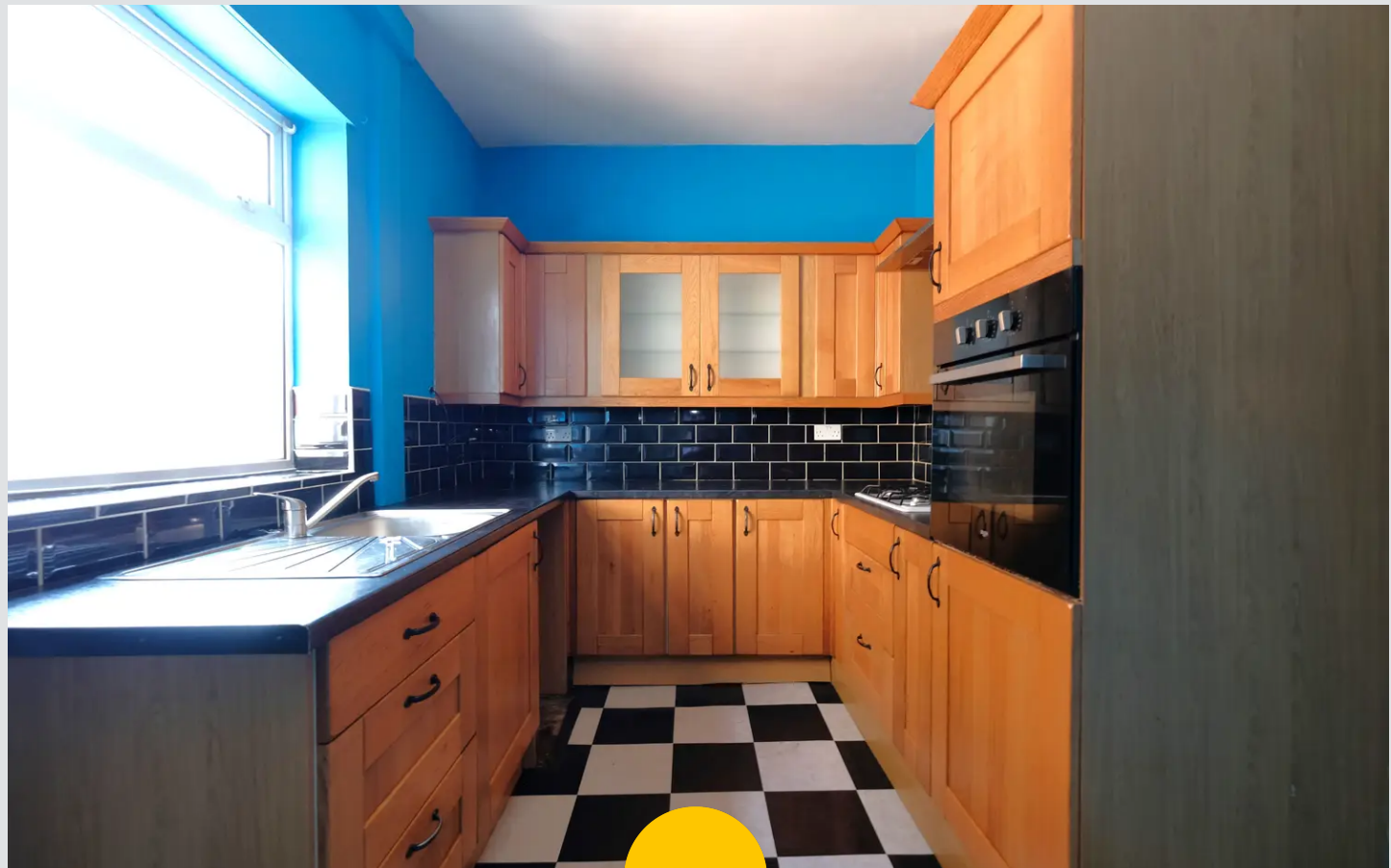
14' 4" x 10' 7" (4.37m x 3.23m)

Featuring ceiling light point, power point, radiator, double glazed windows. Complete with fitted wardrobes. Fitted with laminate flooring.

Bedroom Two

13' 4" x 9' 0" (4.06m x 2.74m)

Featuring ceiling light point, power point, double glazed windows, radiator. Fitted with laminate flooring.



Bedroom Three

9' 8" x 7' 9" (2.95m x 2.36m)

Featuring ceiling light point, radiator, power point, double glazed windows. Complete with a boiler.

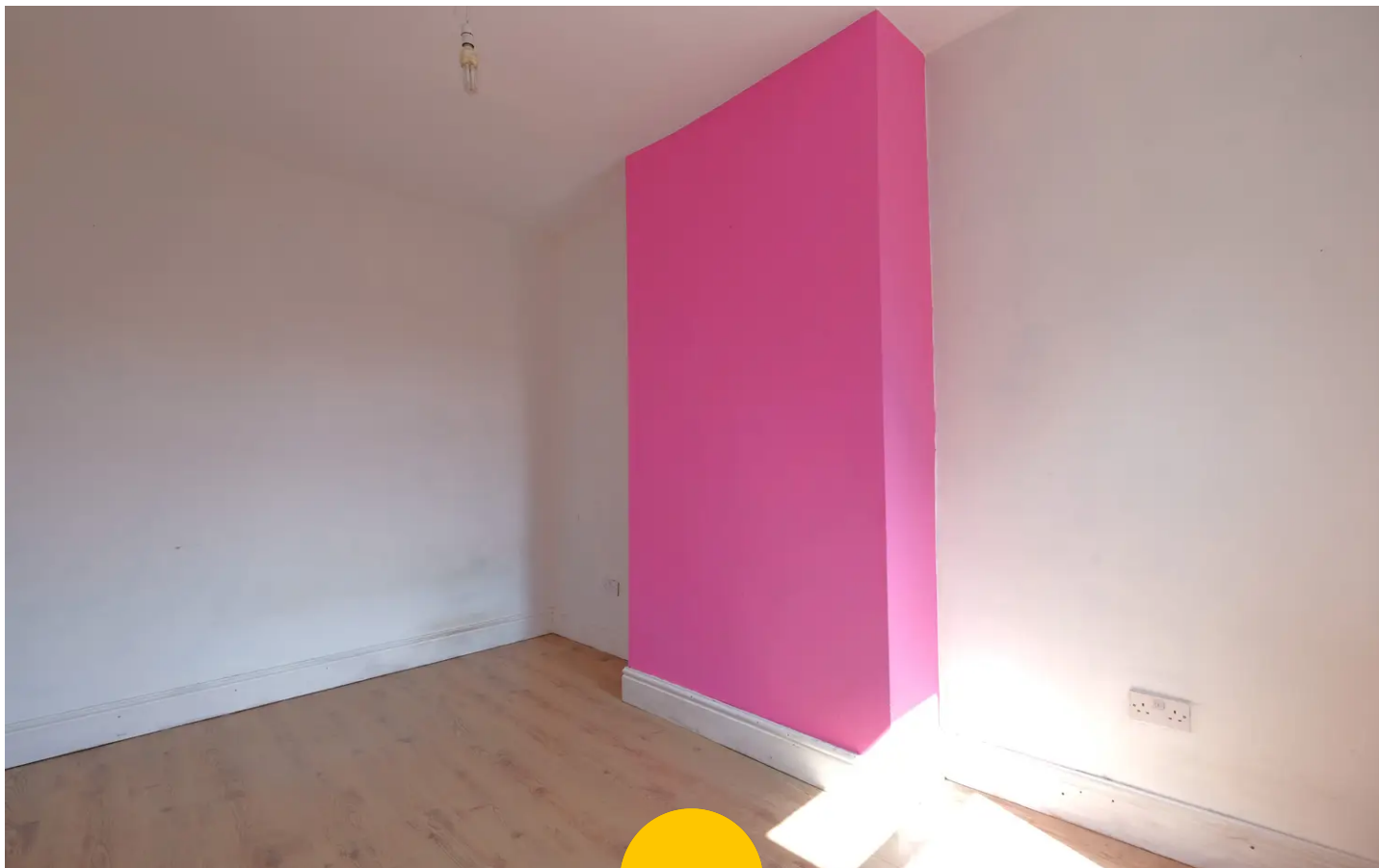
Bathroom

5' 0" x 4' 8" (1.52m x 1.42m)

Featuring a three - piece suite, including handwash basin, bath with an overhead shower, w/c. Complete with a ceiling light point, double glazed windows. Fitted with part tiled walls, laminate flooring.

External

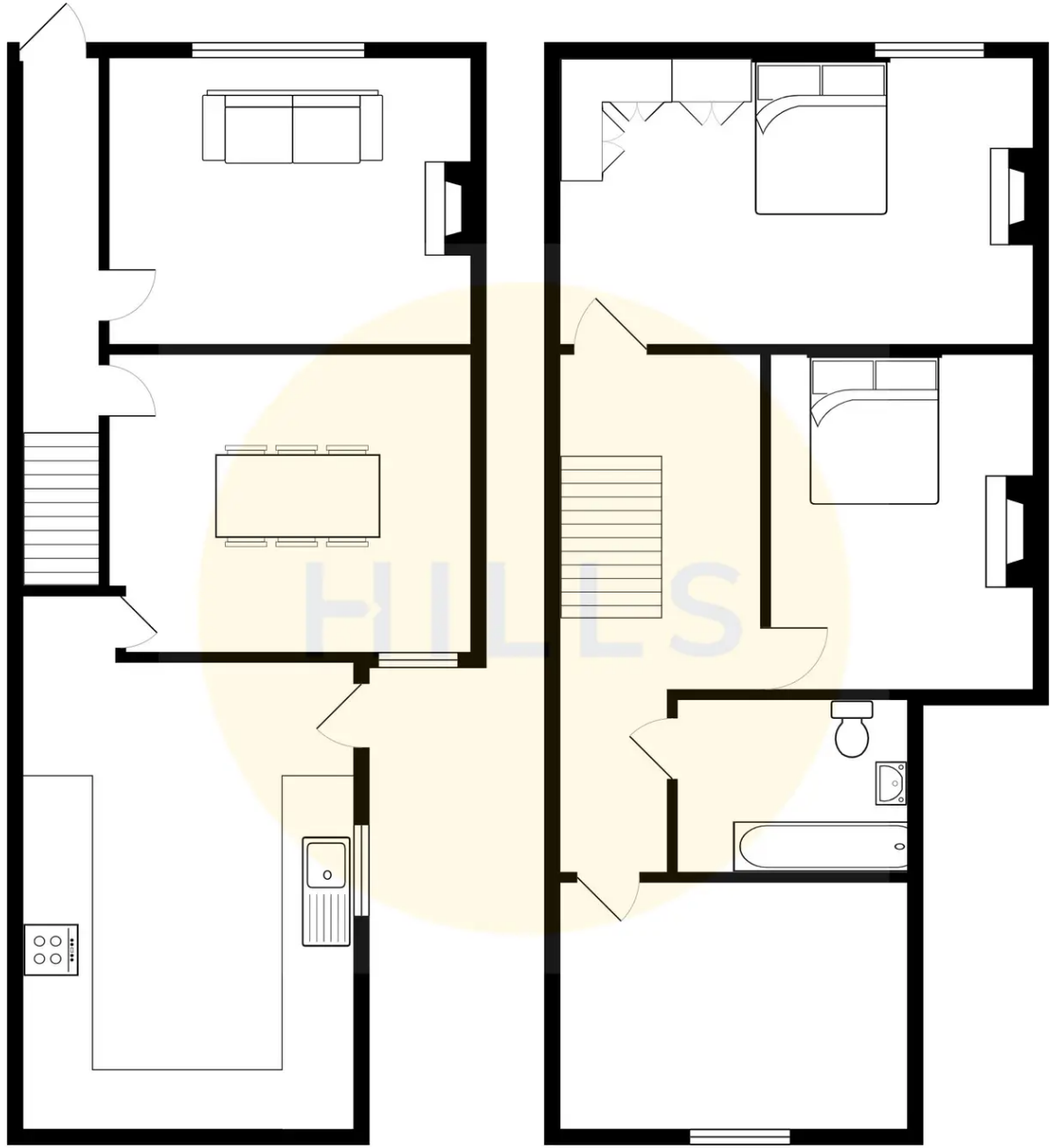
Paved garden to the front of the property with a central flower bed. Enclosed paved garden to the rear of the property with gated access.





HILLS







Hills | Salfords Estate Agent

Hills Residential, Sentinel House Albert Street - M30 0SS

0161 707 4900

sales@hills.agency

www.hills.agency/



THE PROPERTY MISDESCRIPTIONS ACT 1991 The Agent has not tested any apparatus, equipment, fixtures and fittings or services and so cannot verify that they are in working order or fit for the purpose. A Buyer is advised to obtain verification from their Solicitor or Surveyor. References to the Tenure of a Property are based on information supplied by the Seller. The Agent has not had sight of the title documents. A Buyer is advised to obtain verification from their Solicitor. You are advised to check the availability of this property before travelling any distance to view. Every effort and precaution has been made to ensure these particulars are correct and not misleading but their accuracy is not guaranteed nor do they form part of any contract. If there is any point which is of particular importance to you, please contact us and we will provide any information you require. This is advisable, particularly if you intend to travel some distance to view the property. The mention of any appliances and services within these details does not imply that they are in full and efficient working order. These particulars are in draft form awaiting Vendors confirmation of their accuracy. These details must therefore be taken as a guide only.