



Helena Street, Salford

Salford



In Excess of £170,000

Helena Street

Salford

SPACIOUS TWO BEDROOM TERRACED PROPERTY,
located in the popular Irlam o' th' Heights!

Council Tax band: A

Tenure: Freehold

- Spacious Two Bedroom Terraced Property
- Located in the Popular Irlam o' th' Heights
- Lounge and a Spacious Dining Room Separated via an Archway
- Fitted Kitchen and a Three-Piece Bathroom
- Two Double Bedrooms
- Close to Amenities, Local Schooling and Parks
- Within Easy Access of Transport Links into Salford Quays, Media City and Manchester City Centre
- Great First Time Home or Investment
- Viewing is Highly Recommended!



HILLS

Entrance Hallway

Featuring a ceiling light point. Fitted with carpet flooring.

Lounge

12' 9" x 7' 7" (3.89m x 2.31m)

Featuring ceiling light point, double glazed window, radiator. Fitted with laminate flooring.

Dining room

14' 0" x 12' 8" (4.26m x 3.86m)

Featuring a ceiling light point, double glazed window, two radiators. Fitted with laminate flooring.

Kitchen

13' 1" x 5' 7" (4.00m x 1.70m)

Featuring a ceiling light point, radiator, fitted wall and base units, integrated hob and oven. Space for fridge freezer. Complete with laminate flooring.

Landing

Featuring a ceiling light point. Fitted with carpet flooring.

Bedroom One

11' 9" x 10' 11" (3.57m x 3.33m)

Featuring a ceiling light point, radiator. Fitted with laminate flooring.

Bedroom Two

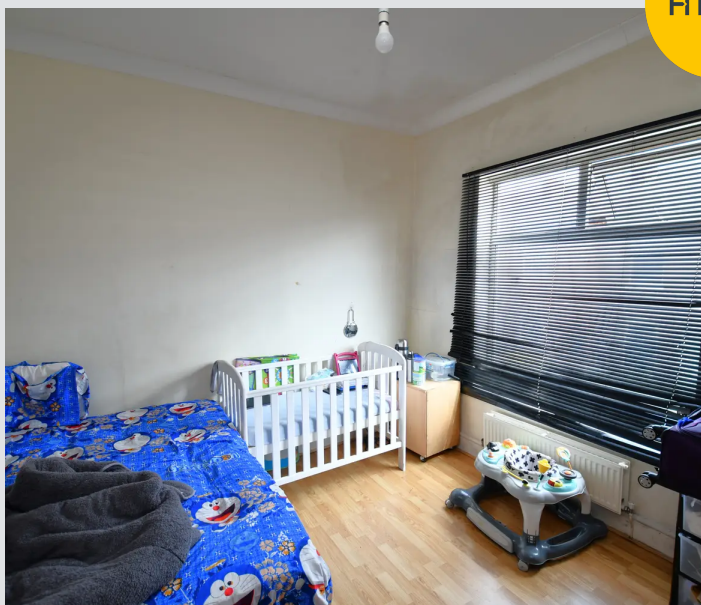
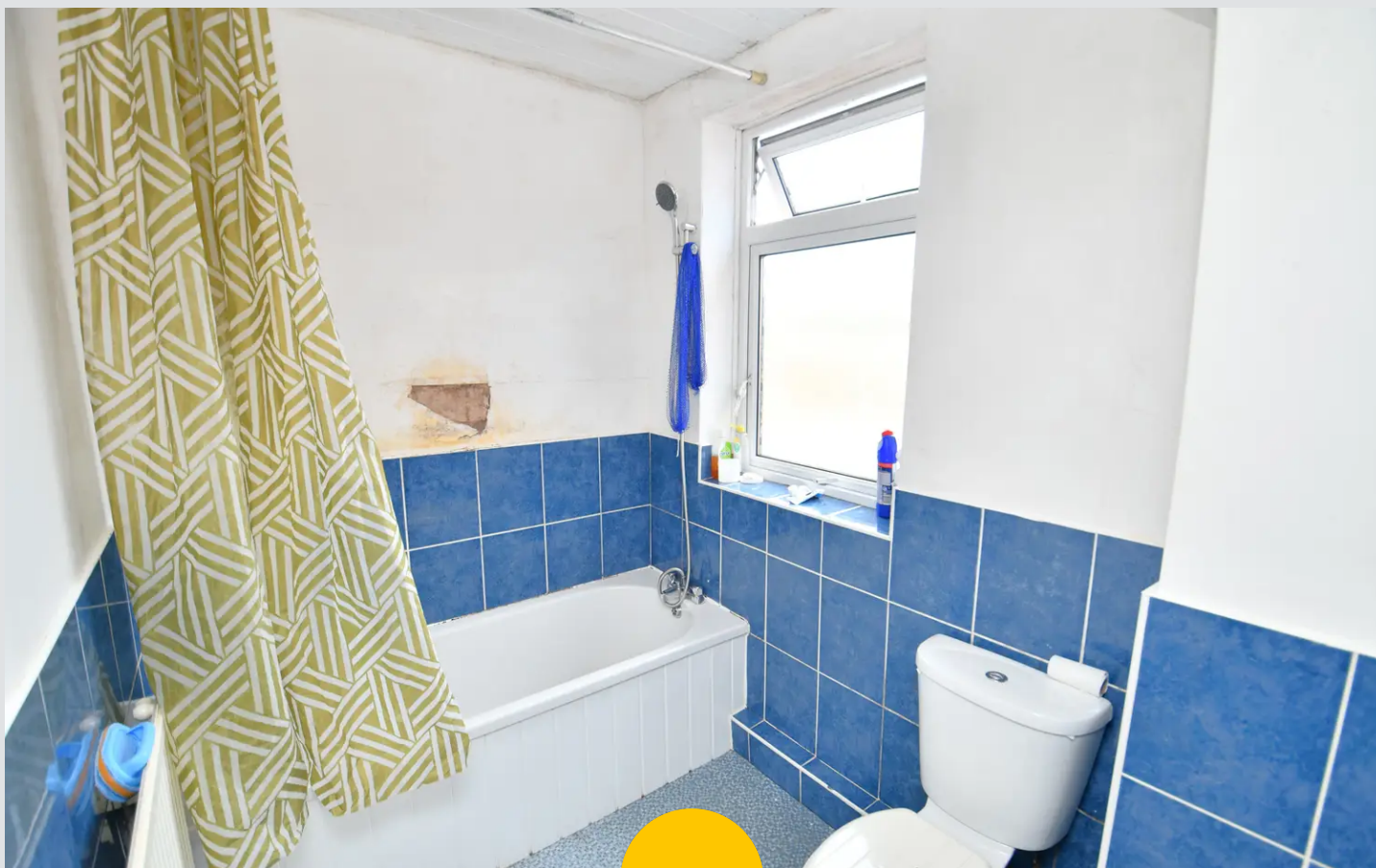
13' 7" x 6' 8" (4.14m x 2.04m)

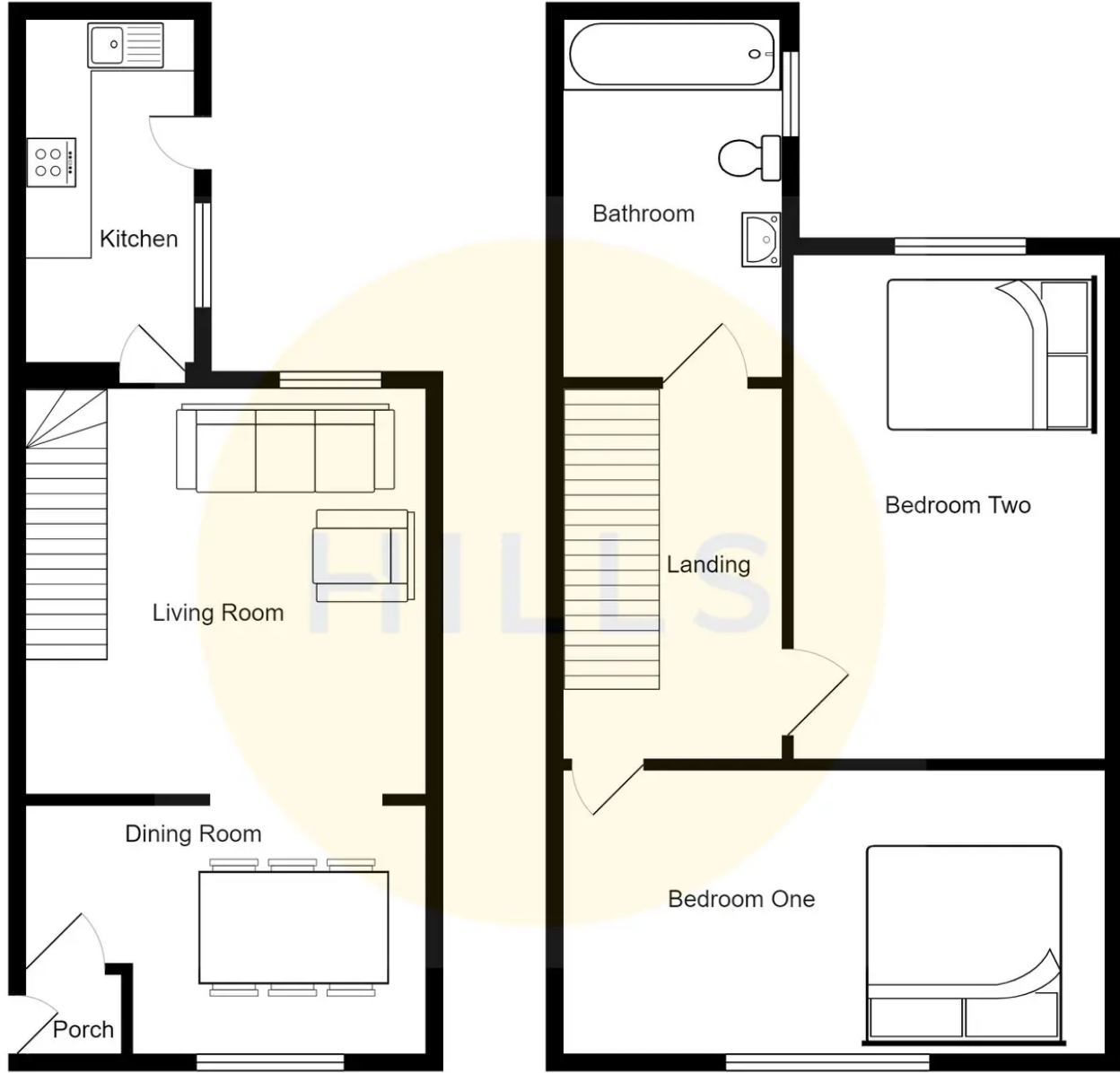
Featuring a ceiling light point, double glazed window, radiator. Fitted with laminate flooring.

Bathroom

6' 10" x 5' 8" (2.08m x 1.72m)

Featuring three - piece suite, handwash basin, w/c, bath with an overhead shower, spotlights, double glazed windows. Fitted with part tiled walls, carpet flooring.







Hills | Salfords Estate Agent

Hills Residential, Sentinel House Albert Street - M30 0SS

0161 707 4900

sales@hills.agency

www.hills.agency/



THE PROPERTY MISDESCRIPTIONS ACT 1991 The Agent has not tested any apparatus, equipment, fixtures and fittings or services and so cannot verify that they are in working order or fit for the purpose. A Buyer is advised to obtain verification from their Solicitor or Surveyor. References to the Tenure of a Property are based on information supplied by the Seller. The Agent has not had sight of the title documents. A Buyer is advised to obtain verification from their Solicitor. You are advised to check the availability of this property before travelling any distance to view. Every effort and precaution has been made to ensure these particulars are correct and not misleading but their accuracy is not guaranteed nor do they form part of any contract. If there is any point which is of particular importance to you, please contact us and we will provide any information you require. This is advisable, particularly if you intend to travel some distance to view the property. The mention of any appliances and services within these details does not imply that they are in full and efficient working order. These particulars are in draft form awaiting Vendors confirmation of their accuracy. These details must therefore be taken as a guide only.