



Vestry Court, John William Street

Manchester



Offers in Region of **£130,000**

Vestry Court

Manchester

Modern one bed flat in Eccles with sitting tenants, ideal for investors. Stylish open-plan layout, contemporary kitchen, spacious bedroom, and sleek bathroom. Convenient location near amenities, public transport, and motorway links. Turnkey investment opportunity with proven rental income. Council Tax band: A

Tenure: Leasehold

- Fabulous Investment Opportunity, being Sold with Sitting Tenants
- Modern New Build Apartment in the Centre of Eccles
- Spacious One Bedroom Apartment
- Well Presented Throughout
- Open Plan Kitchen, Living & Dining Space
- Generous Bedroom
- Modern Three Piece Bathroom Suite
- Excellent Amenities Close By
- Easy Access to Fantastic Public Transport & Motorway Links



Entrance Hallway

Kitchen/Diner

8' 10" x 5' 11" (2.70m x 1.80m)

Featuring modern fitted units with integrated oven, hob and fridge freezer. Complete with spotlights. Fitted with laminate flooring.

Lounge

8' 0" x 11' 10" (2.43m x 3.60m)

Featuring single ceiling light point, double glazed window, electric radiator. Complete with carpet flooring.

Bedroom

11' 2" x 8' 6" (3.40m x 2.60m)

Featuring single ceiling light point, double glazed windows, wall mounted electric radiator. Complete with carpet flooring.

Bathroom

7' 10" x 5' 7" (2.39m x 1.70m)

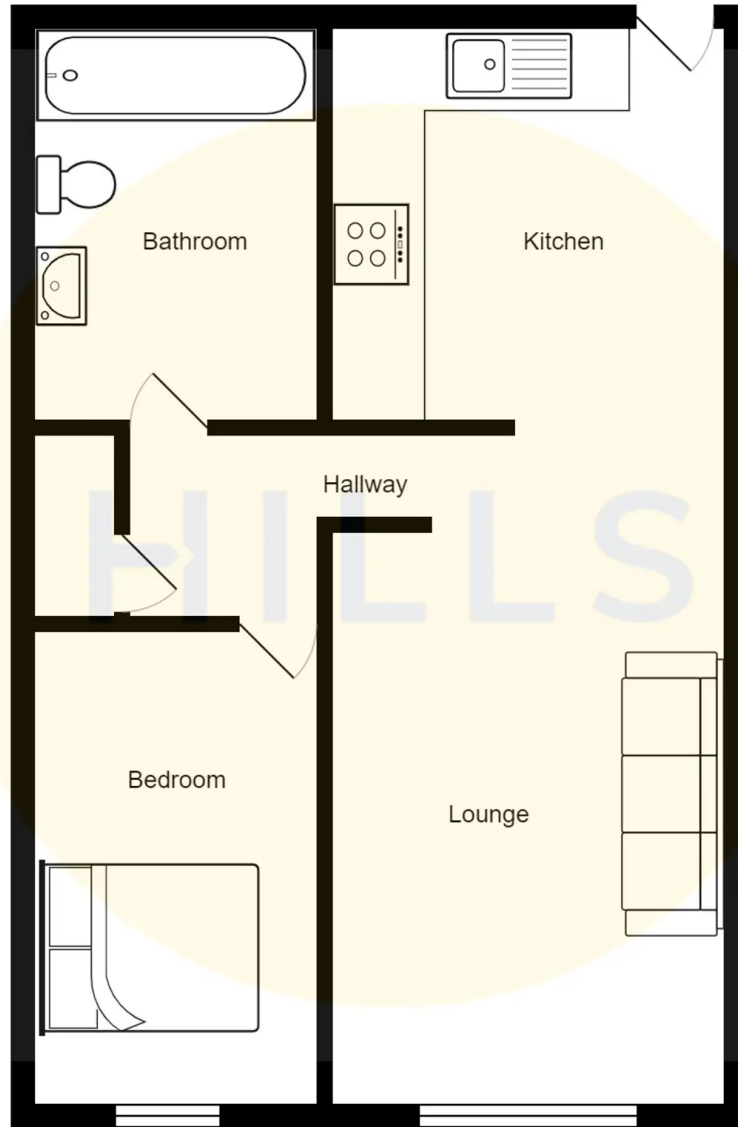
Featuring a three piece suite, including a hand wash basin, W/C, bath with an overhead shower. Complete with spotlights and a heated towel rail. Fitted with laminate flooring and part tiled walls.

Storage Cupboard

Total Open Plan Measurement

26' 4" x 10' 4" (8.03m x 3.14m)







Hills | Salfords Estate Agent

Hills Residential, Sentinel House Albert Street - M30 0SS

0161 707 4900

sales@hills.agency

www.hills.agency/



THE PROPERTY MISDESCRIPTIONS ACT 1991 The Agent has not tested any apparatus, equipment, fixtures and fittings or services and so cannot verify that they are in working order or fit for the purpose. A Buyer is advised to obtain verification from their Solicitor or Surveyor. References to the Tenure of a Property are based on information supplied by the Seller. The Agent has not had sight of the title documents. A Buyer is advised to obtain verification from their Solicitor. You are advised to check the availability of this property before travelling any distance to view. Every effort and precaution has been made to ensure these particulars are correct and not misleading but their accuracy is not guaranteed nor do they form part of any contract. If there is any point which is of particular importance to you, please contact us and we will provide any information you require. This is advisable, particularly if you intend to travel some distance to view the property. The mention of any appliances and services within these details does not imply that they are in full and efficient working order. These particulars are in draft form awaiting Vendors confirmation of their accuracy. These details must therefore be taken as a guide only.