

The Beeches, Sandwich Road

Manchester



Offers in Region of £140,000

The Beeches

Manchester

Immaculate ground floor flat in Ellesmere Park with stylish modern fittings. Open lounge/dining area with underfloor heating, sleek fitted kitchen, modern bathroom, spacious bedroom, ample storage. Resident parking, close to amenities and transport links. Ideal for contemporary living.

Tenure: Leasehold

- One Bedroom Ground Floor Flat Presented to a Show Home Standard Throughout
- Open Plan Lounge & Dining Area with Floor to Ceiling Window & Underfloor Heating
- Newly Fitted Kitchen
- Spacious Double Bedroom with Underfloor Heating
- Modern Three Piece Bathroom Suite
- Resident Parking Bays & Garages Available to Rent
- Three Spacious Storage Cupboards
- Located in the Desirable Ellesmere Park, Close to Excellent Amenities, Transport Links & just a Short Walk to Monton Village



HILLS



Entrance Hallway

A welcoming entrance hallway with two storage cupboards. Complete with a ceiling light point and laminate vinyl tile flooring.

Lounge

A bright lounge complete with a ceiling light point, floor to ceiling double glazed windows and laminate vinyl tile flooring with underfloor heating.

Kitchen

Featuring modern wall and base units with a ceramic sink, electric oven and hob. Space for a fridge freezer and washer. Complete with a ceiling light point, double glazed window, part tiled walls and laminate vinyl tile flooring.

Bathroom

Featuring a three-piece suite including a bath with shower over, vanity unit with hand wash basin and W.C. Complete with a ceiling light point, airing cupboard, tiled walls and laminate vinyl tile flooring.

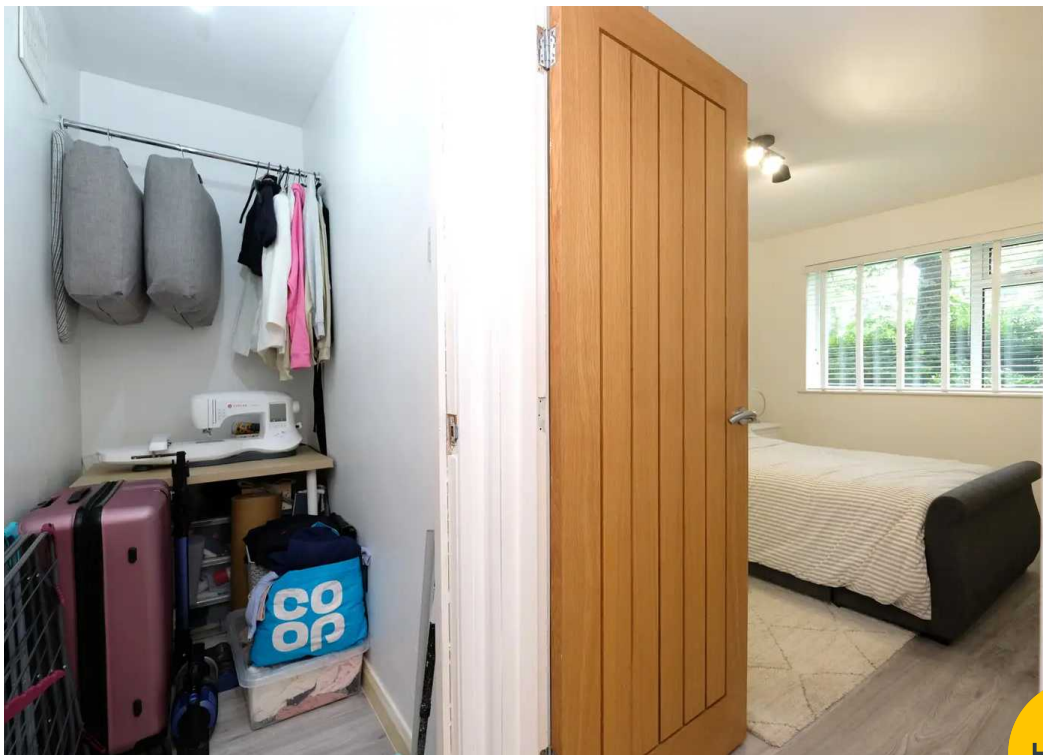
Bedroom One

Complete with a ceiling light point, double glazed window and laminate vinyl tile flooring with underfloor heating.

External

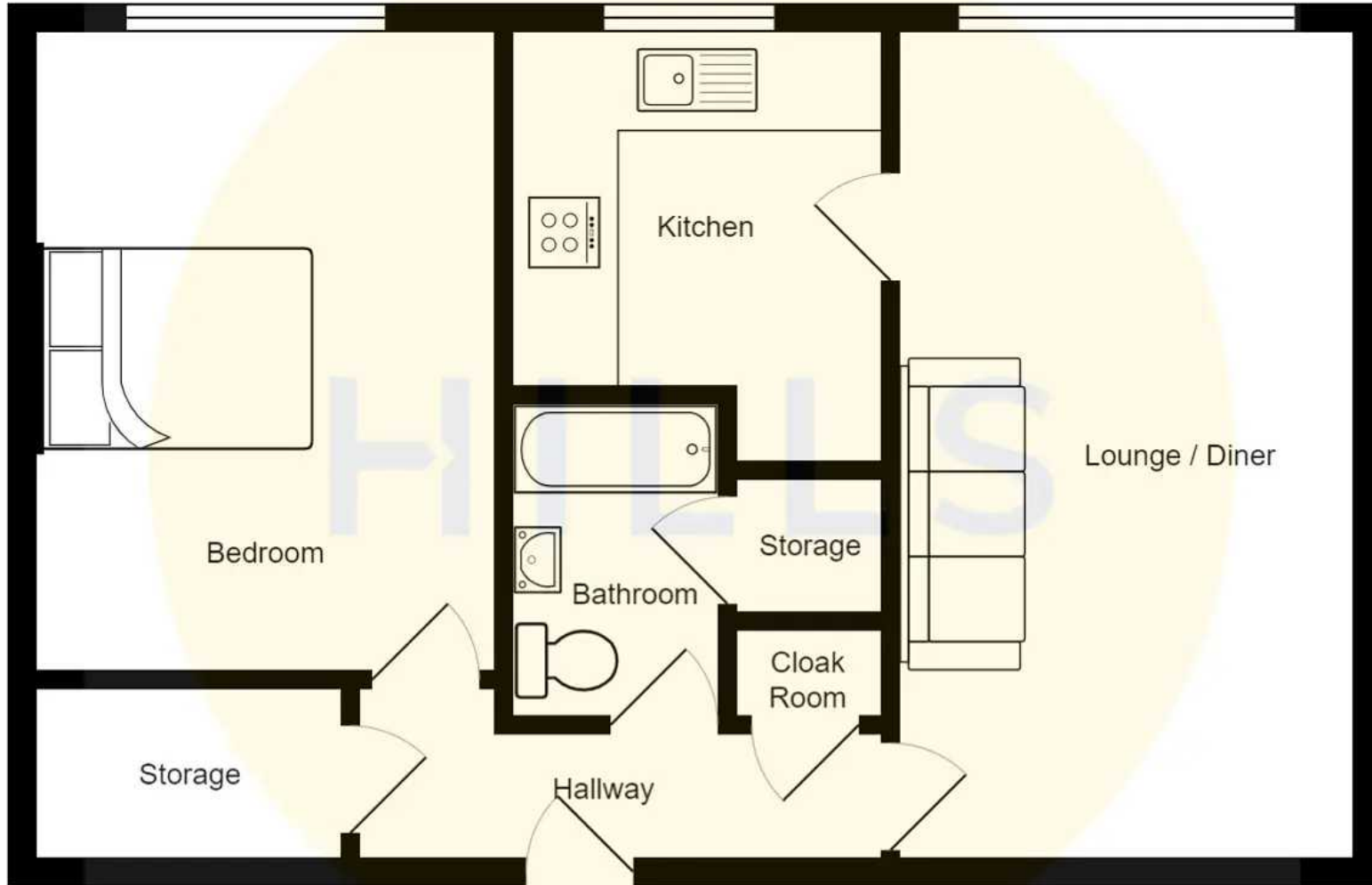
Complete with communal gardens and communal parking.





HILLS







Hills | Salfords Estate Agent

Hills Residential, Sentinel House Albert Street - M30 0SS

0161 707 4900

sales@hills.agency

www.hills.agency/



THE PROPERTY MISDESCRIPTIONS ACT 1991 The Agent has not tested any apparatus, equipment, fixtures and fittings or services and so cannot verify that they are in working order or fit for the purpose. A Buyer is advised to obtain verification from their Solicitor or Surveyor. References to the Tenure of a Property are based on information supplied by the Seller. The Agent has not had sight of the title documents. A Buyer is advised to obtain verification from their Solicitor. You are advised to check the availability of this property before travelling any distance to view. Every effort and precaution has been made to ensure these particulars are correct and not misleading but their accuracy is not guaranteed nor do they form part of any contract. If there is any point which is of particular importance to you, please contact us and we will provide any information you require. This is advisable, particularly if you intend to travel some distance to view the property. The mention of any appliances and services within these details does not imply that they are in full and efficient working order. These particulars are in draft form awaiting Vendors confirmation of their accuracy. These details must therefore be taken as a guide only.