



Breck Road, Eccles

Manchester



Offers in Region of £240,000

Breck Road

Eccles, Manchester

Stunning two bed semi-detached house on popular cul de sac. Open plan lounge/dining room, modern kitchen, two double bedrooms, office space, contemporary bathroom, off-road parking, well-kept rear garden. Prime location in Winton Village near amenities and Monton Village.

Council Tax band: B

Tenure: Leasehold

- Beautifully Presented Semi Detached Property Situated on a Popular Cul De Sac
- Open Plan Lounge & Dining Room
- Modern Fitted Kitchen & Bathroom Updated Two Years Ago
- Two Generous Double Bedrooms with an Additional Office Space
- Off Road Parking for Multiple Cars to the Front
- Well Kept Rear Garden with Paved seating Area, Lawn & Garage
- Located in Winton Village Close to Shops, Parks, Schools & just a Short Walk to Monton Village



Reception One

12' 9" x 11' 6" (3.88m x 3.51m)

Featuring ceiling light point, double glazed bay window. Complete with a gas fire. Fitted with laminate flooring.

Reception Two

8' 8" x 9' 10" (2.63m x 3.00m)

Featuring ceiling light point, double glazed patio rear window, radiator. Fitted with laminate flooring.

Kitchen

6' 10" x 10' 0" (2.08m x 3.05m)

Featuring integrated oven, hob, washing machine, fridge freezer, utility cupboard. Complete with spotlights, radiator, double glazed rear window, wall and base units. Fitted with luxury vinyl tiled flooring.

Bedroom One

9' 7" x 11' 7" (2.93m x 3.54m)

Spacious bedroom featuring ceiling light point, radiator, double glazed bay window. Fitted with laminate flooring.

Bedroom Two

10' 8" x 9' 1" (3.25m x 2.76m)

Featuring ceiling light point, radiator, double glazed rear window. Fitted with laminate flooring.

Bedroom Three/Office

5' 0" x 6' 1" (1.53m x 1.85m)

Featuring ceiling light point, boiler, radiator, double glazed front window. Fitted with laminate flooring.

Bathroom

5' 5" x 6' 5" (1.66m x 1.95m)

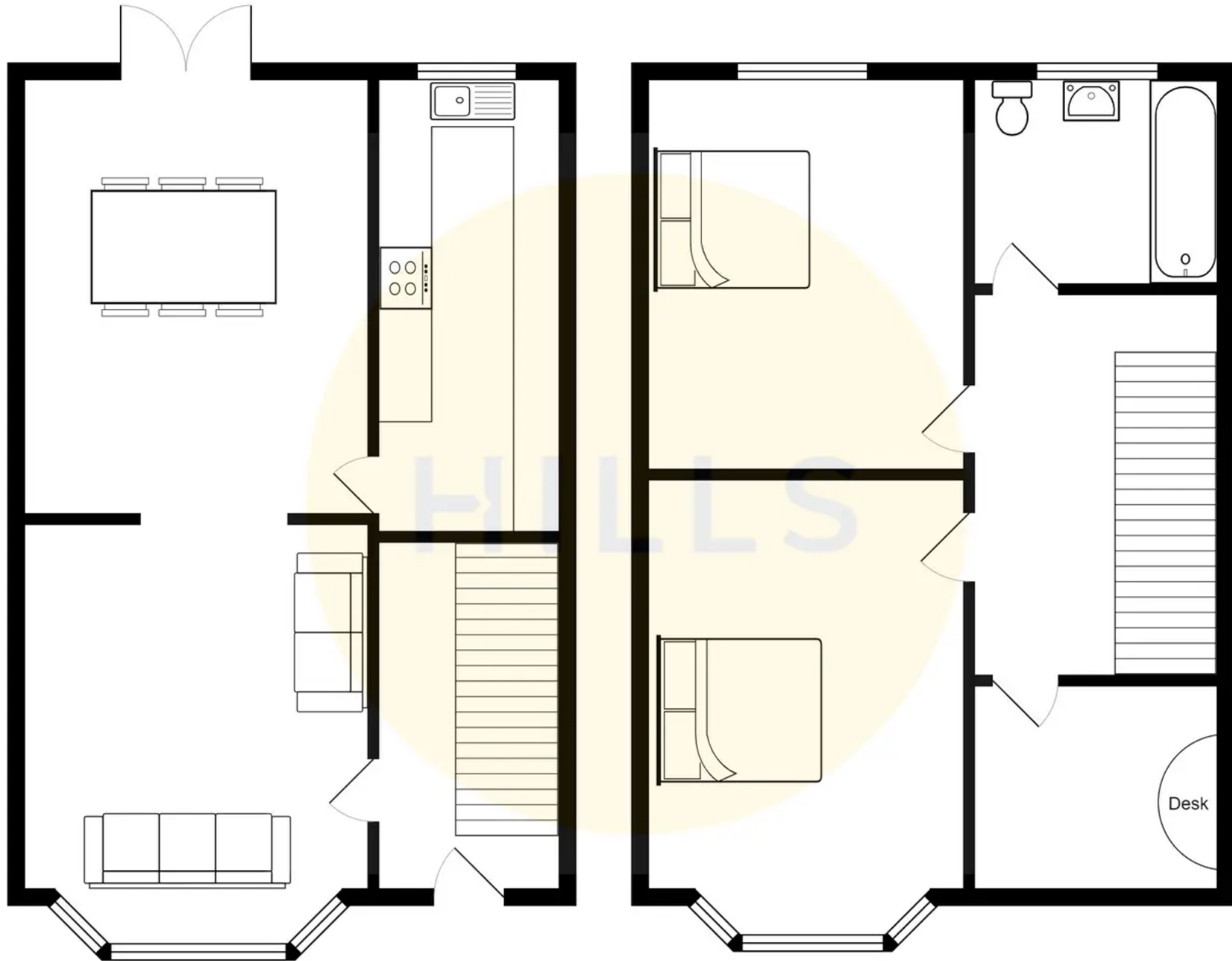
Featuring three piece suite including w/c, handwash basin, bath with a shower overhead. Complete with spotlights, towel radiator, double glazed rear window. Fitted with luxury vinyl tiled flooring.





HILLS







Hills | Salfords Estate Agent

Hills Residential, Sentinel House Albert Street - M30 0SS

0161 707 4900

sales@hills.agency

www.hills.agency/



THE PROPERTY MISDESCRIPTIONS ACT 1991 The Agent has not tested any apparatus, equipment, fixtures and fittings or services and so cannot verify that they are in working order or fit for the purpose. A Buyer is advised to obtain verification from their Solicitor or Surveyor. References to the Tenure of a Property are based on information supplied by the Seller. The Agent has not had sight of the title documents. A Buyer is advised to obtain verification from their Solicitor. You are advised to check the availability of this property before travelling any distance to view. Every effort and precaution has been made to ensure these particulars are correct and not misleading but their accuracy is not guaranteed nor do they form part of any contract. If there is any point which is of particular importance to you, please contact us and we will provide any information you require. This is advisable, particularly if you intend to travel some distance to view the property. The mention of any appliances and services within these details does not imply that they are in full and efficient working order. These particulars are in draft form awaiting Vendors confirmation of their accuracy. These details must therefore be taken as a guide only.