

Fairbrook Drive, Salford

Salford



In Excess of £230,000

# 5 Fairbrook Drive

Salford, Salford

Spacious three bedroom family home located on a popular residential estate! Featuring a driveway to the side providing off-road parking for multiple cars, plus a garage!

- Spacious Three Bedroom Family Home
- Generous, Open Plan Lounge Diner
- Modern Fitted Kitchen and a Sleek, Three-Piece Family Bathroom
- Benefits from a Full-Width Conservatory
- Three Well-Proportioned Bedrooms
- Beautifully Presented Garden to the Front with Artificial Grass and Stones
- Garden to the Rear with Ample Space for Entertaining
- Driveway to the Side for Multiple Cars, Plus a Garage
- Viewing is Highly Recommended



### **Porch**

Ceiling light point and access into the lounge. Under stair storage

### **Lounge Diner**

20' 6" x 12' 4" (6.24m x 3.76m)

An open plan lounge and diner complete with double glazed patio doors into the conservatory, three ceiling light points and wall-mounted radiator. Ample space for a dining table.

### **Kitchen**

8' 8" x 7' 8" (2.64m x 2.34m)

Fitted with a range of wall and base units with complimentary roll top work surfaces and integrated stainless steel sink and drainer unit. Built in oven, hob, extractor. With space for a fridge/freezer, washing machine and dryer. Double glazed window to the front elevation, boiler and tiled flooring. Ceiling light point.

### **Conservatory**

13' 4" x 9' 2" (4.06m x 2.79m)

A full width conservatory complete with double patio doors opening onto the rear garden. Ceiling light point and UPVC surround.

### **Landing**

Ceiling light point and access into all rooms

### **Bedroom One**

12' 1" x 8' 3" (3.68m x 2.51m)

Double glazed window to the rear, ceiling light point and wall-mounted radiator.

### **Bedroom Two**

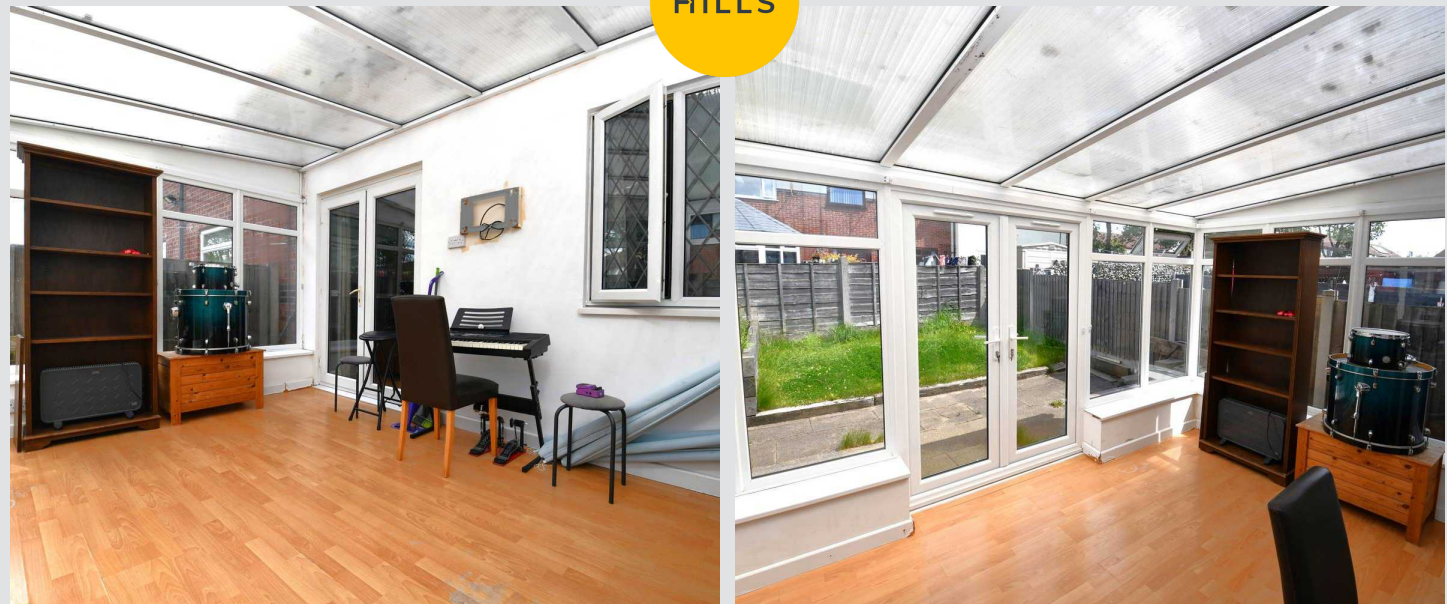
12' 2" x 8' 4" (3.71m x 2.54m)

Double glazed window to the rear, fitted wardrobes, ceiling light point and wall-mounted radiator.

### **Bedroom Three**

8' 8" x 5' 9" (2.64m x 1.75m)

Double glazed window to the rear, ceiling light point, wall-mounted radiator and laminate flooring.



### **Porch**

Ceiling light point and access into the lounge. Under stair storage

### **Lounge Diner**

20' 6" x 12' 4" (6.24m x 3.76m)

An open plan lounge and diner complete with double glazed patio doors into the conservatory, three ceiling light points and wall-mounted radiator. Ample space for a dining table.

### **Kitchen**

8' 8" x 7' 8" (2.64m x 2.34m)

Fitted with a range of wall and base units with complimentary roll top work surfaces and integrated stainless steel sink and drainer unit. Built in oven, hob, extractor. With space for a fridge/freezer, washing machine and dryer. Double glazed window to the front elevation, boiler and tiled flooring. Ceiling light point.

### **Conservatory**

13' 4" x 9' 2" (4.06m x 2.79m)

A full width conservatory complete with double patio doors opening onto the rear garden. Ceiling light point and UPVC surround.

### **Landing**

Ceiling light point and access into all rooms

### **Bedroom One**

12' 1" x 8' 3" (3.68m x 2.51m)

Double glazed window to the rear, ceiling light point and wall-mounted radiator.

### **Bedroom Two**

12' 2" x 8' 4" (3.71m x 2.54m)

Double glazed window to the rear, fitted wardrobes, ceiling light point and wall-mounted radiator.

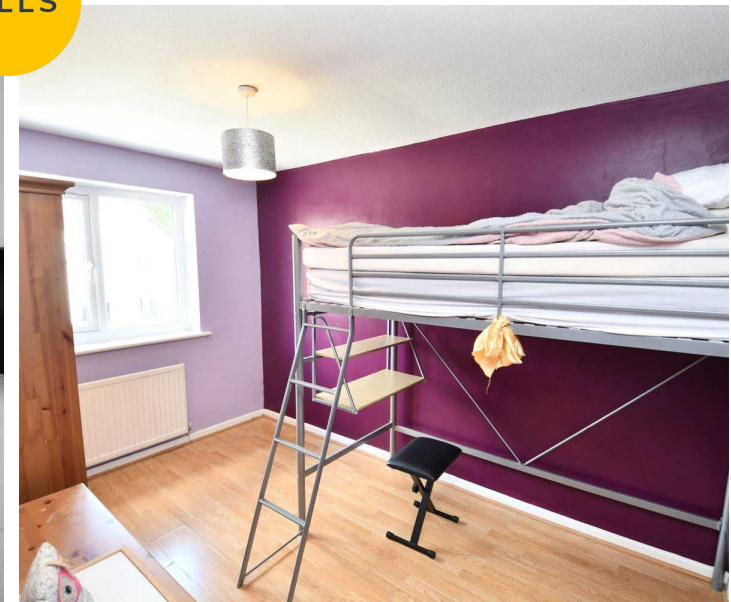
### **Bedroom Three**

8' 8" x 5' 9" (2.64m x 1.75m)

Double glazed window to the rear, ceiling light point, wall-mounted radiator and laminate flooring.



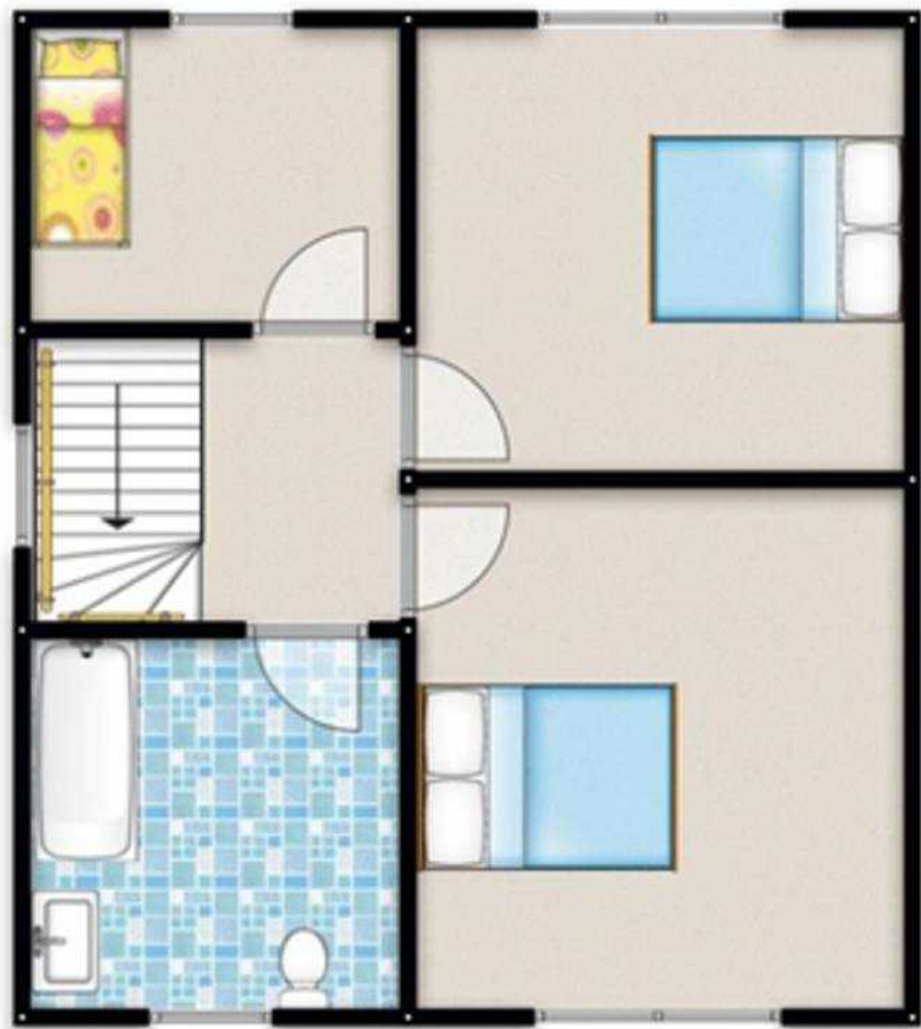
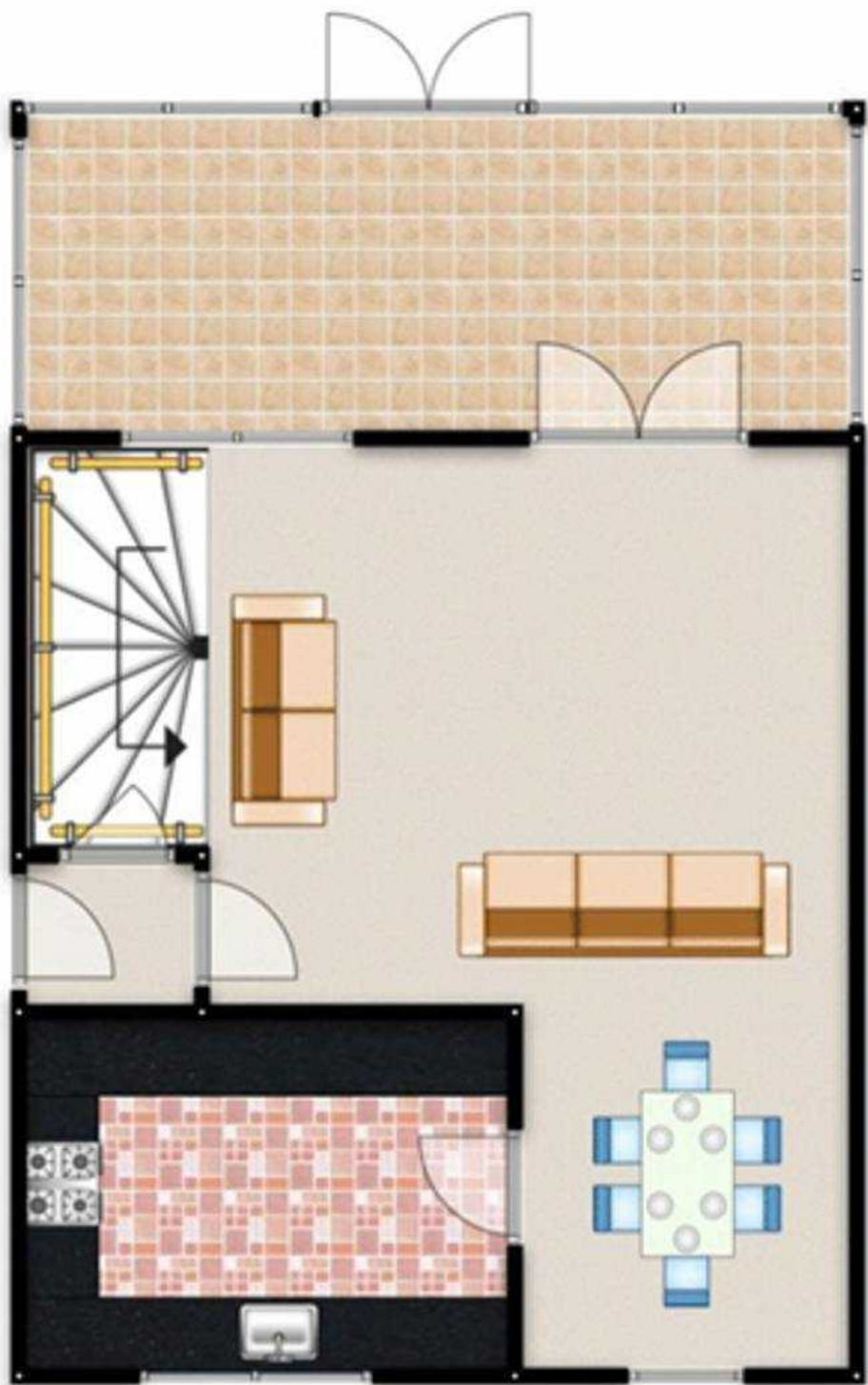
HILLS





HILLS







## Hills | Salfords Estate Agent

Hills Residential, Sentinel House Albert Street – M30 0SS

0161 707 4900

[sales@hills.agency](mailto:sales@hills.agency)

[www.hills.agency/](http://www.hills.agency/)



THE PROPERTY MISDESCRIPTIONS ACT 1991 The Agent has not tested any apparatus, equipment, fixtures and fittings or services and so cannot verify that they are in working order or fit for the purpose. A Buyer is advised to obtain verification from their Solicitor or Surveyor. References to the Tenure of a Property are based on information supplied by the Seller. The Agent has not had sight of the title documents. A Buyer is advised to obtain verification from their Solicitor. You are advised to check the availability of this property before travelling any distance to view. Every effort and precaution has been made to ensure these particulars are correct and not misleading but their accuracy is not guaranteed nor do they form part of any contract. If there is any point which is of particular importance to you, please contact us and we will provide any information you require. This is advisable, particularly if you intend to travel some distance to view the property. The mention of any appliances and services within these details does not imply that they are in full and efficient working order. These particulars are in draft form awaiting Vendors confirmation of their accuracy. These details must therefore be taken as a guide only.