



Hiley Road, Eccles

Manchester



Offers in Region of £200,000

Hiley Road

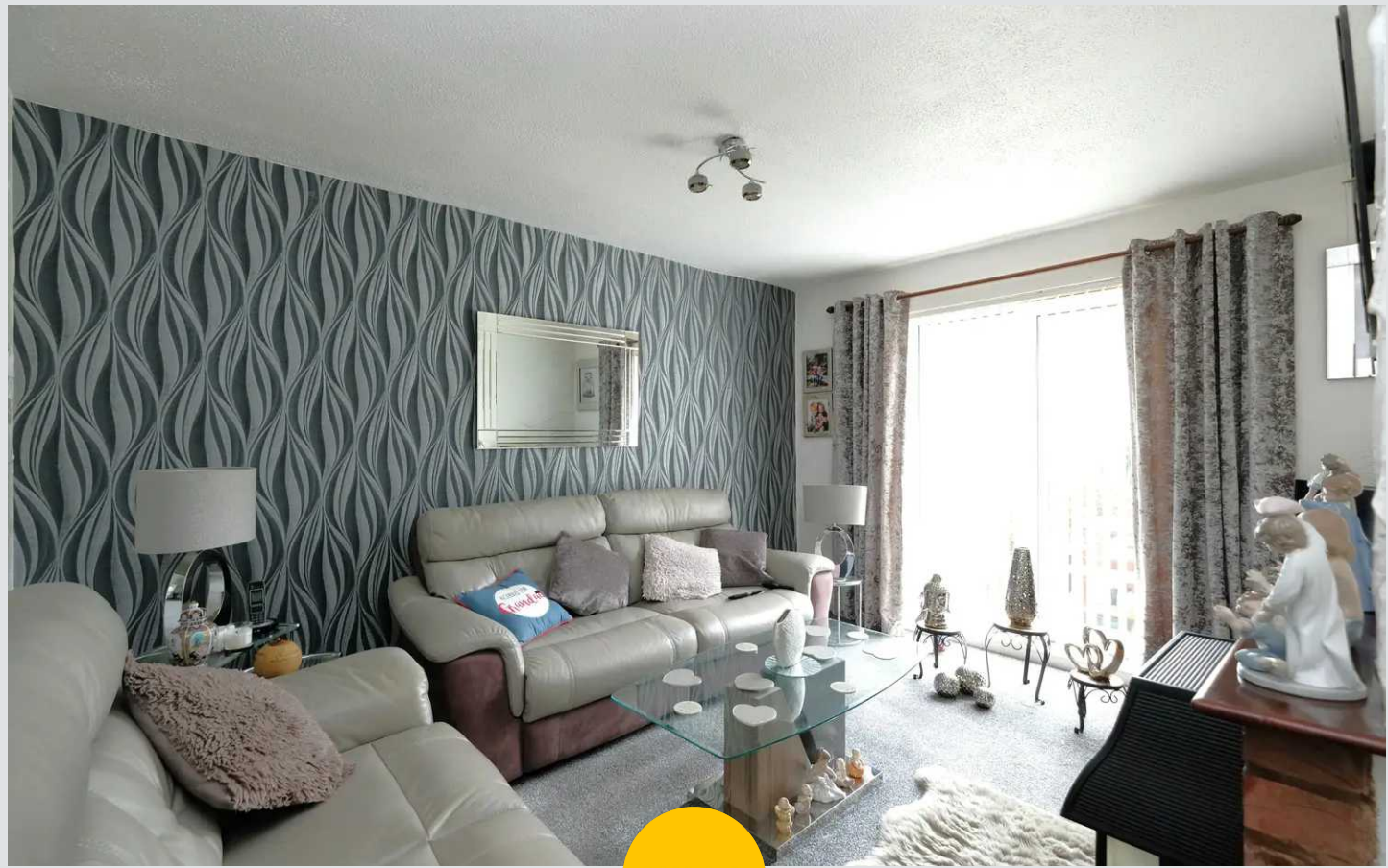
Eccles, Manchester

Fabulous three bedroom home in popular area, ideal for first-time buyers or families. Spacious living areas, quality kitchen, cosy lounge, and ample storage. Generously sized bedrooms, beautiful gardens, close to amenities and transport links.

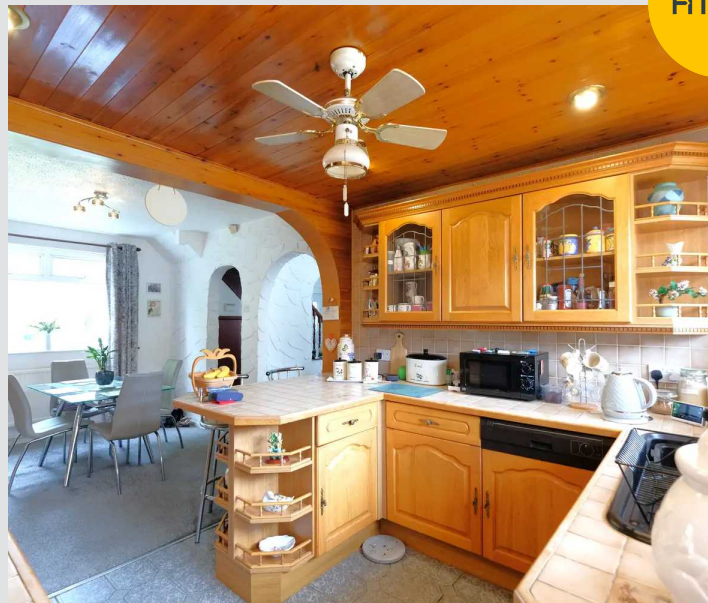
Council Tax band: A

Tenure: Freehold

- Fabulous First Time Buy or Family Home
- Two Reception Rooms
- Quality Fitted Kitchen
- Three Generous Bedrooms
- Three Piece Bathroom Suite
- Beautifully Kept Front & Rear Gardens
- Popular Residential Area
- Located Close to Shops, Playing Fields, Schools & Excellent Transport Links



HILLS



Entrance Hallway

Featuring ceiling light point, radiator, power point, ceiling wall point. Complete with storage cupboards under the stairs. Fitted with laminate flooring.

Lounge

13' 5" x 11' 6" (4.09m x 3.51m)

Featuring ceiling light point, ceiling wall point, patio doors, power point. Complete with a gas fire.

Dining room

11' 2" x 9' 8" (3.40m x 2.95m)

Featuring ceiling light point, ceiling wall point, wall mounted radiator, power point. Complete with double glazed windows.

Kitchen

9' 7" x 9' 2" (2.92m x 2.79m)

Featuring ceiling light spotlights, ceiling light point, power point, wall and base units, composite sink. Space for washer, cooker, gas hob, integrated dishwasher. Complete with PVC door. Fitted with part tiled walls and tiled flooring.

Landing

Featuring ceiling light point, ceiling wall point, double glazed window. Complete with loft access.

Bedroom One

12' 0" x 9' 4" (3.66m x 2.84m)

Featuring ceiling light point, ceiling wall point, power point, radiator, double glazed window. Fitted with carpet flooring.

Bedroom Two

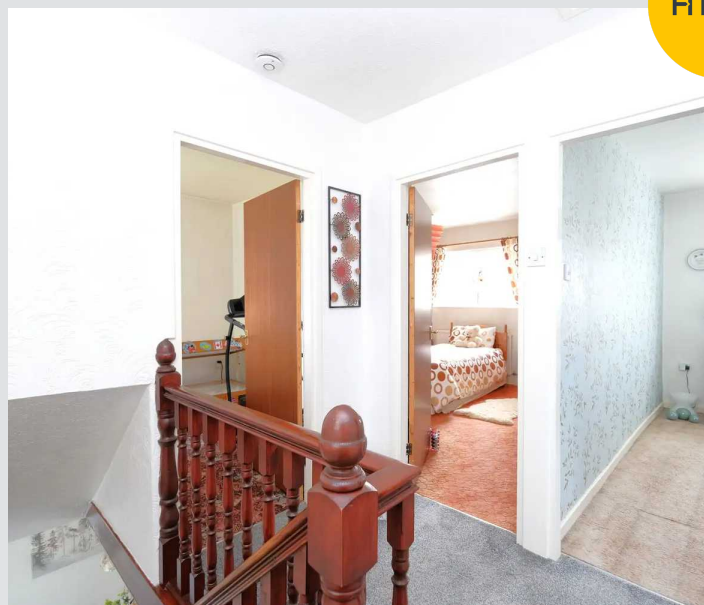
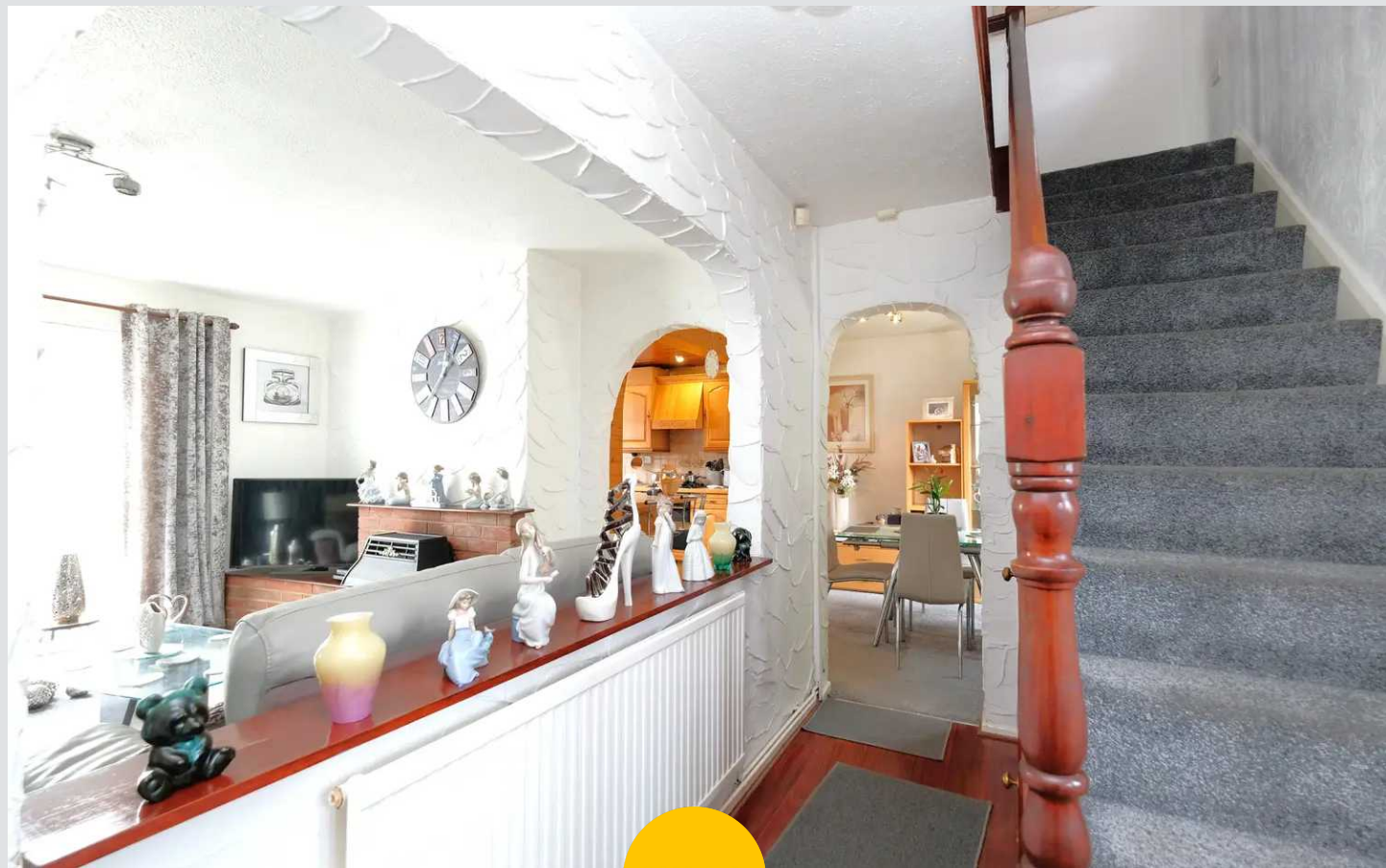
12' 2" x 12' 0" (3.71m x 3.66m)

Featuring ceiling light point, ceiling wall point, radiator, power point. Complete with a double closet. Fitted with carpet flooring.

Bedroom Three

9' 1" x 8' 4" (2.77m x 2.54m)

Featuring ceiling light point, ceiling wall point, wall mounted radiator, power point, double glazed window. Fitted with carpet flooring.



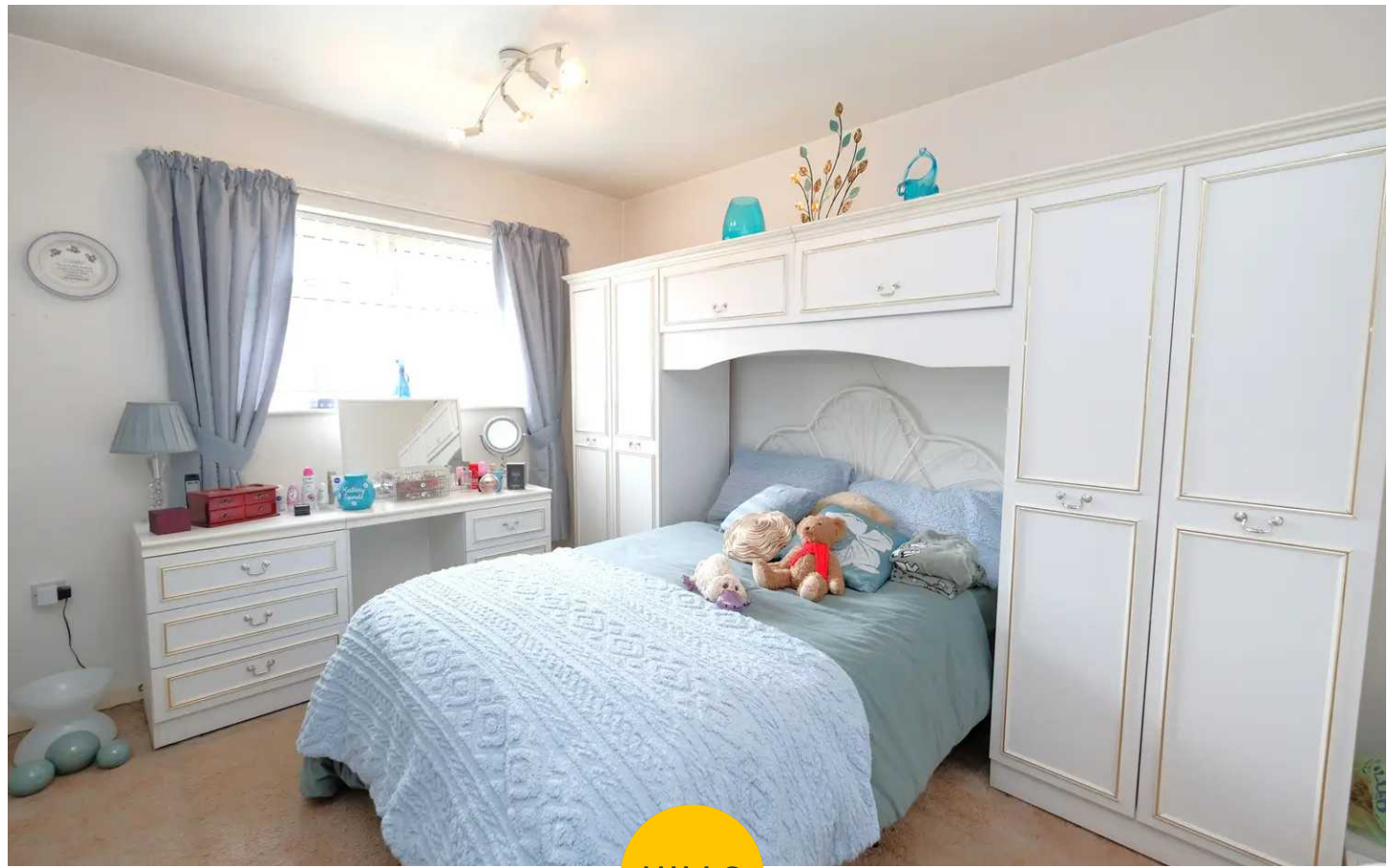
Bathroom

7' 5" x 5' 4" (2.26m x 1.63m)

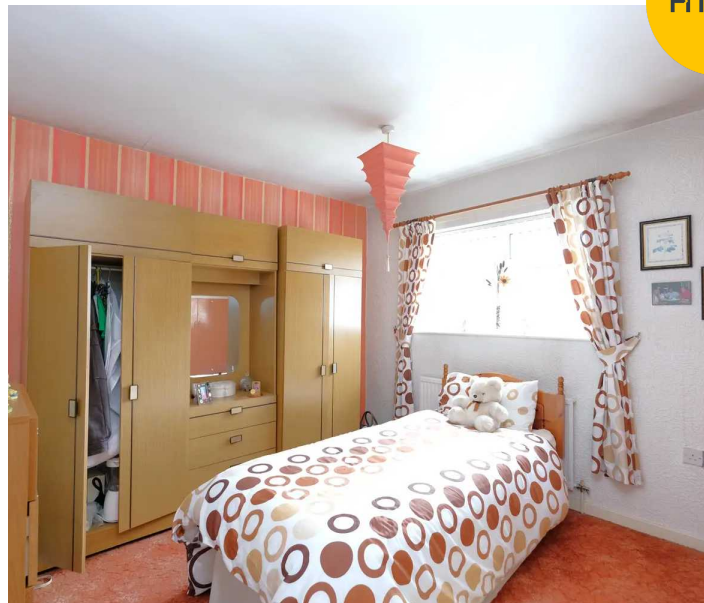
Featuring three piece suite, including w/c, hand wash basin, corner bath with a shower over tub. Complete with two double glazed windows, ceiling spotlights. Fitted with tiled walls and lino flooring.

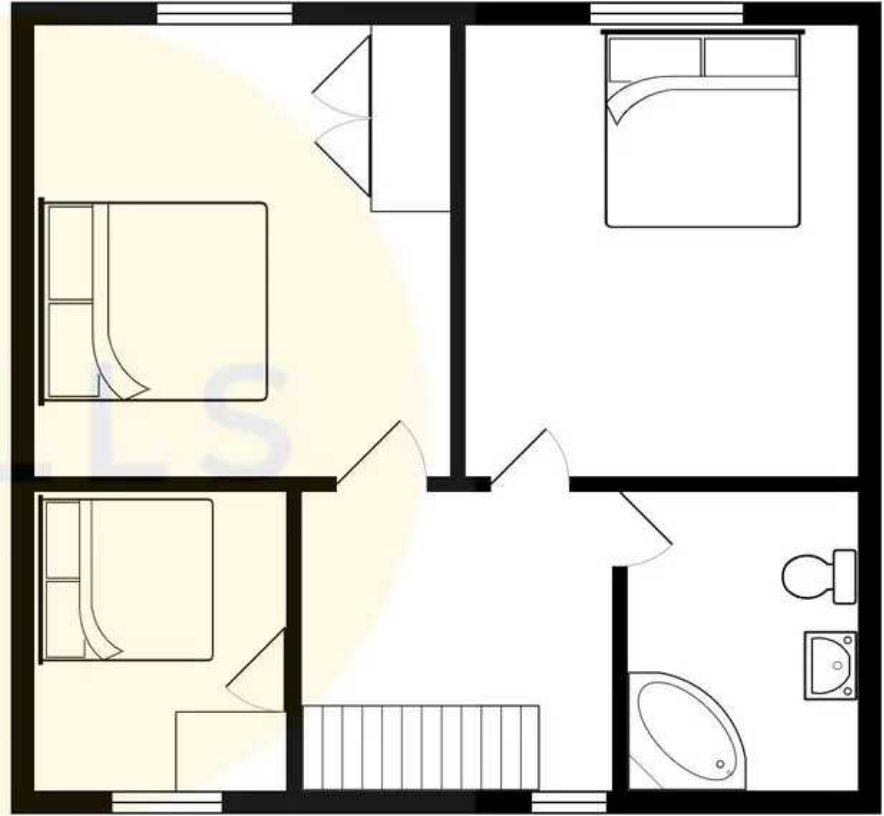
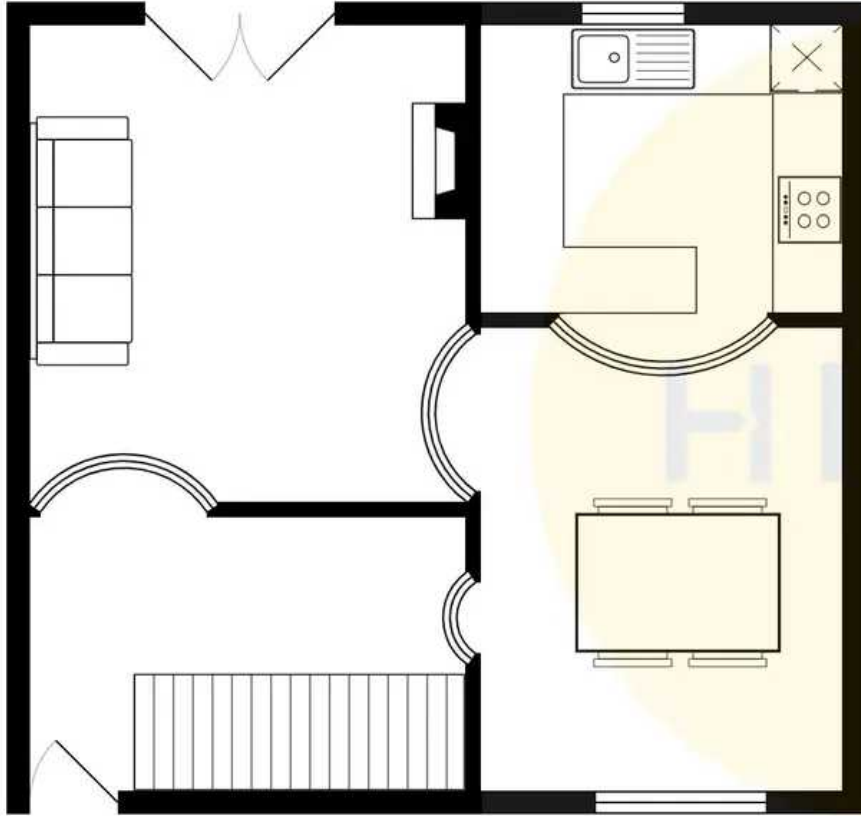
External

To the front of the property is a well kept lawn, planted borders, and paved path to the front door. To the rear of the property is a rear panelled patio well kept lawn, planted borders, with gated access back to front.



HILLS







HILLS

Hills | Salfords Estate Agent

Hills Residential, Sentinel House Albert Street – M30 0SS

0161 707 4900

sales@hills.agency

www.hills.agency/



THE PROPERTY MISDESCRIPTIONS ACT 1991 The Agent has not tested any apparatus, equipment, fixtures and fittings or services and so cannot verify that they are in working order or fit for the purpose. A Buyer is advised to obtain verification from their Solicitor or Surveyor. References to the Tenure of a Property are based on information supplied by the Seller. The Agent has not had sight of the title documents. A Buyer is advised to obtain verification from their Solicitor. You are advised to check the availability of this property before travelling any distance to view. Every effort and precaution has been made to ensure these particulars are correct and not misleading but their accuracy is not guaranteed nor do they form part of any contract. If there is any point which is of particular importance to you, please contact us and we will provide any information you require. This is advisable, particularly if you intend to travel some distance to view the property. The mention of any appliances and services within these details does not imply that they are in full and efficient working order. These particulars are in draft form awaiting Vendors confirmation of their accuracy. These details must therefore be taken as a guide only.