



Marlborough Road, Eccles

Manchester



Offers Over £225,000



# Marlborough Road

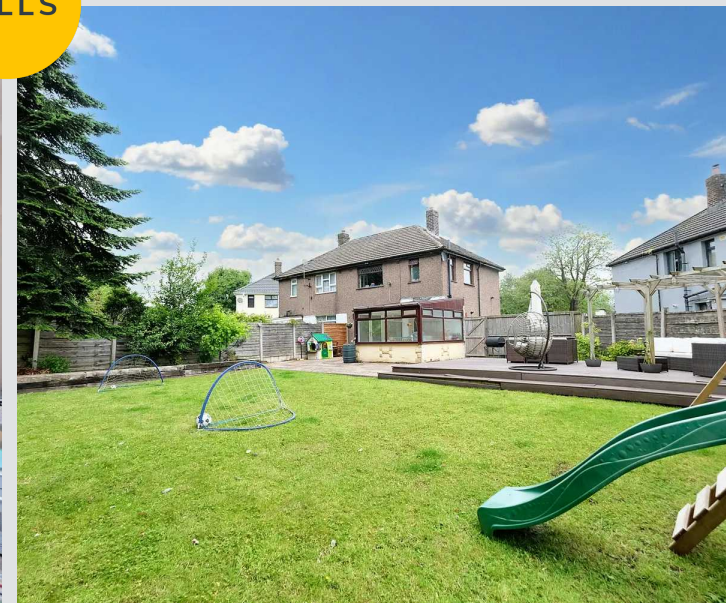
Eccles, Manchester

Desirable two bedroom semi-detached house in Ellesmere Park with corner plot. Ideal for first-time buyers or downsizers. Close to Salford Royal Hospital. Modern kitchen, conservatory, two double bedrooms, beautifully kept gardens. Excellent amenities and transport links nearby. Great potential for further development.

Council Tax band: A

Tenure: Freehold

- Fabulous Two Bedroom Semi Detached Occupying a Generous Corner Plot
- Perfect First Time Buy or Downsize
- Spacious, yet Cosy Lounge & Conservatory to the Rear
- Two Generous Double Bedrooms
- Fitted Three Piece Bathroom Suite
- Modern Fitted Kitchen
- Beautifully Kept Gardens to the Front & Rear
- Potential for Further Development Subject to Planning Permission
- Walking Distance to the Renowned Salford Royal Hospital
- Surrounded by Excellent Amenities & Transport Links





### Entrance Hallway

Featuring ceiling light point, radiator, power point. Complete with composite door, under the stairs storage, under the stairs dogs house. Fitted with laminate flooring.

### Lounge

21' 7" x 11' 5" (6.58m x 3.48m)

Featuring ceiling wall point, two ceiling light points, power point, two double glazed windows, two radiators.

### Kitchen

10' 1" x 7' 7" (3.07m x 2.31m)

Featuring ceiling light point, double glazed window, composite sink, wall and base units, electric hob, electric oven. Space for fridge and freezer (under counter), washing machine. Complete with part tiled walls, boiler, composite door. Fitted with tiled flooring.

### Conservatory

10' 8" x 10' 3" (3.25m x 3.12m)

Featuring ceiling light point, power point, double glazed windows, French door. Fitted with laminate flooring.

### Landing

Complete with a ceiling light point and carpet flooring.

### Bedroom One

18' 2" x 9' 8" (5.54m x 2.95m)

Spacious, first bedroom featuring ceiling light point, ceiling wall point, two double glazed windows, power point, radiator. Complete with a single closet.

### Bedroom Two

11' 6" x 9' 7" (3.51m x 2.92m)

Featuring ceiling wall point, ceiling light point, double glazed window, radiator, power point. Complete with two single closets.

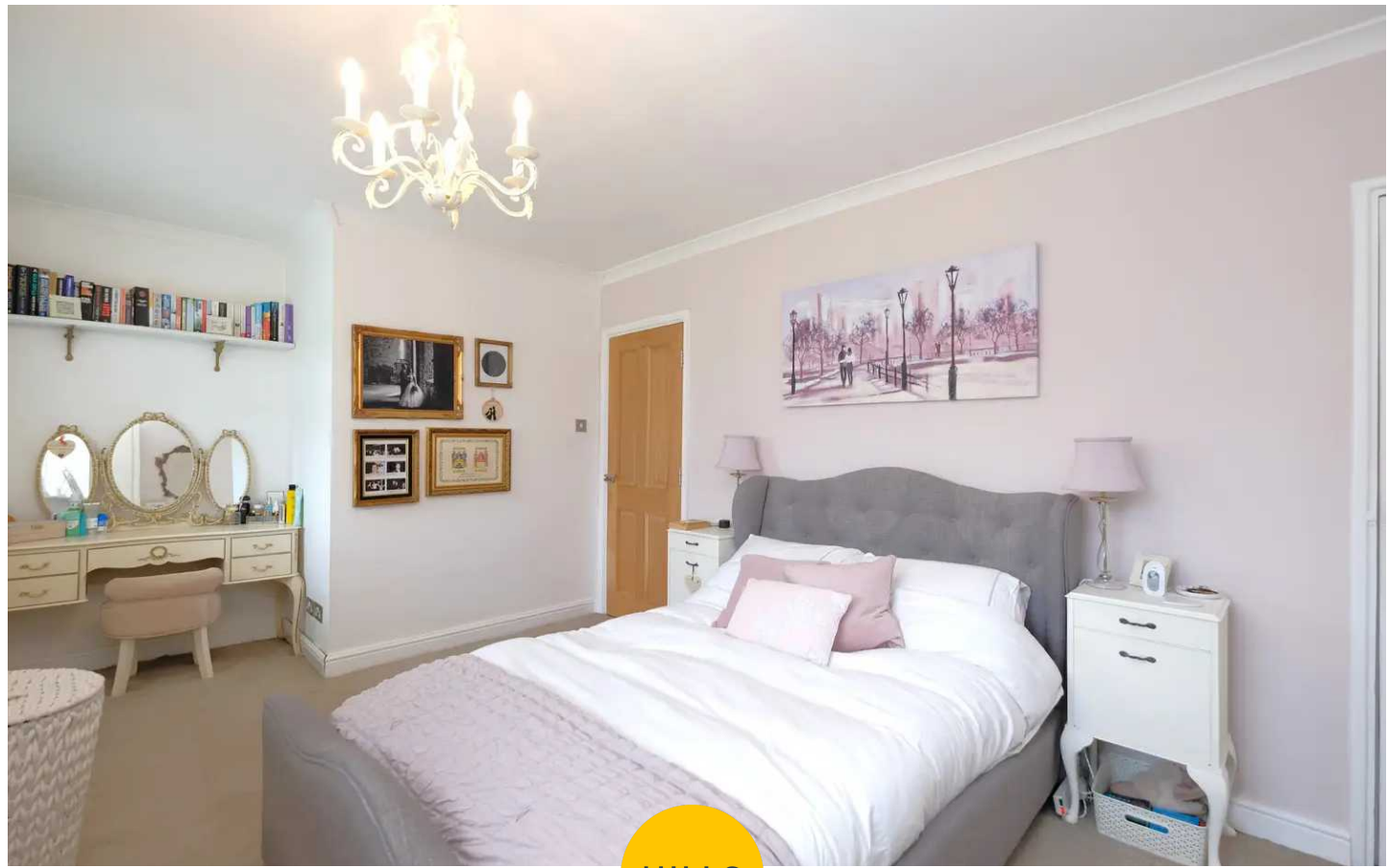


### Bathroom

Featuring a three piece suite including hand wash basin, w/c, shower above the bath. Complete with a hand towel radiator, ceiling light point, two double glazed windows. Fitted with laminate tiled flooring.

### External

To the front of the property is a gated garden including a lawn with planted borders, paved path and decorative slate chippings. To the rear of the property is a fence enclosed garden with gated access to the front. Indian stone patio, raised composite decked seating area with pergola. Lawn with raised sleeper beds including trees and shrubbery, adding plenty of privacy. Scope to develop further subject to planning permission.

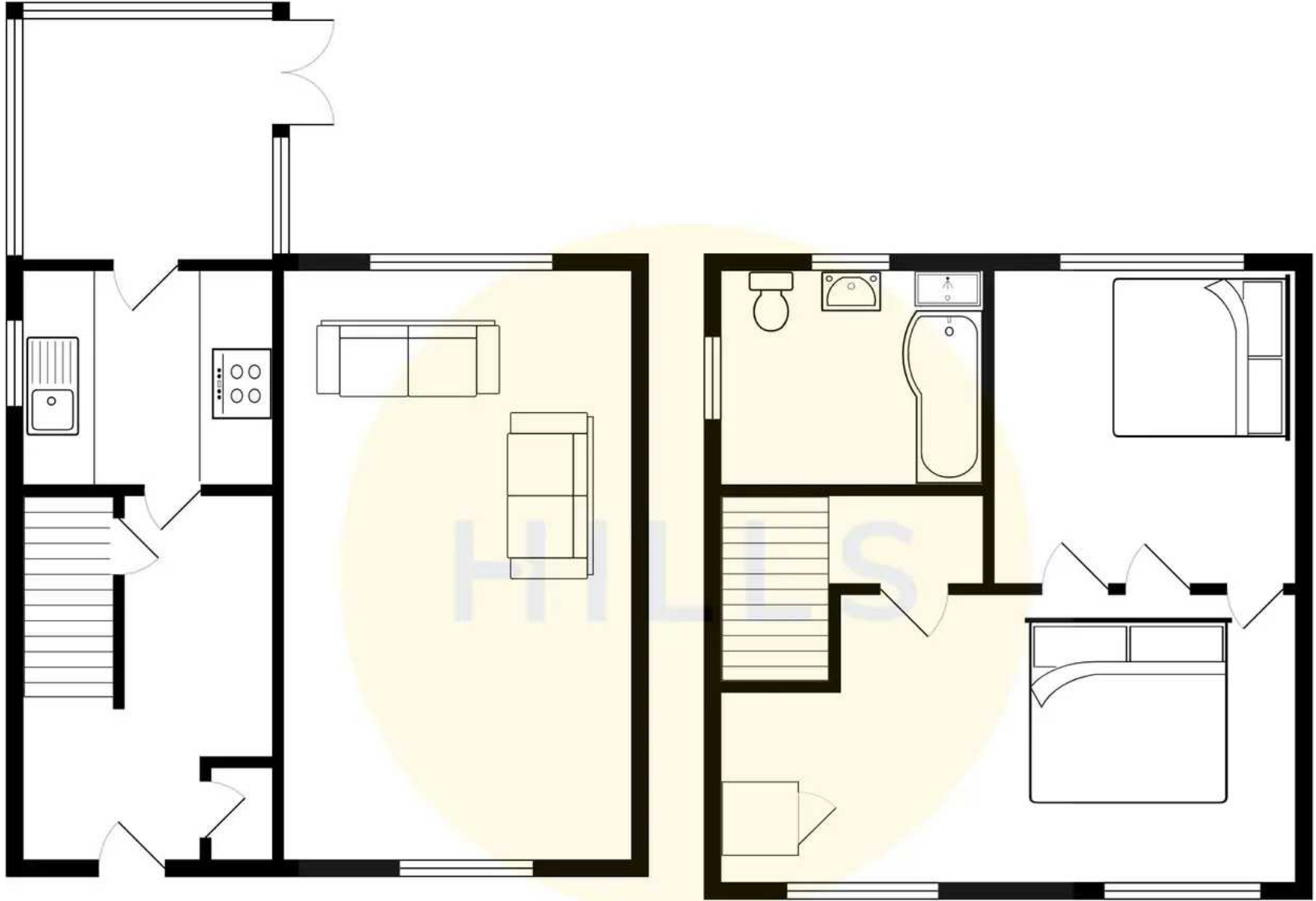






HILLS









## Hills | Salfords Estate Agent

Hills Residential, Sentinel House Albert Street - M30 0SS

0161 707 4900

[sales@hills.agency](mailto:sales@hills.agency)

[www.hills.agency/](http://www.hills.agency/)



THE PROPERTY MISDESCRIPTIONS ACT 1991 The Agent has not tested any apparatus, equipment, fixtures and fittings or services and so cannot verify that they are in working order or fit for the purpose. A Buyer is advised to obtain verification from their Solicitor or Surveyor. References to the Tenure of a Property are based on information supplied by the Seller. The Agent has not had sight of the title documents. A Buyer is advised to obtain verification from their Solicitor. You are advised to check the availability of this property before travelling any distance to view. Every effort and precaution has been made to ensure these particulars are correct and not misleading but their accuracy is not guaranteed nor do they form part of any contract. If there is any point which is of particular importance to you, please contact us and we will provide any information you require. This is advisable, particularly if you intend to travel some distance to view the property. The mention of any appliances and services within these details does not imply that they are in full and efficient working order. These particulars are in draft form awaiting Vendors confirmation of their accuracy. These details must therefore be taken as a guide only.