

Blantyre Street, Eccles

Manchester



Offers over £180,000

# Blantyre Street

Eccles, Manchester

Look at this SPACIOUS terraced home benefitting from TWO RECEPTION ROOMS, TWO GENEROUS BEDROOMS, MODERN FULLY FITTED KITCHEN & BATHROOM and a PRIVATE...  
Council Tax band: A

Tenure: Freehold

- EXTENDED TO THE REAR
- CLOSE TO EXCELLENT TRANSPORT LINKS, LOCAL SHOPS AND GOOD SCHOOLING
- PRIVATE REAR YARD & SMALL GARDEN AT THE FRONT
- UPVC DOUBLE GLAZED WINDOWS
- A STUNNING AND FULLY FITTED MODERN KITCHEN
- FITTED MODERN BATHROOM
- TWO DOUBLE BEDROOMS
- GREAT FIRST PROPERTY
- TWO RECEPTION ROOMS



### Entrance Vestibule

Entered via a uPVC front door. Complete with a ceiling light point and hardwood flooring.

### Lounge

13' 1" x 10' 3" (3.99m x 3.12m)

Featuring a gas fire. Complete with a ceiling light point, wall light point, double glazed window and wall mounted radiator. Fitted with laminate flooring.

### Kitchen

12' 3" x 8' 0" (3.73m x 2.44m)

Featuring complementary wall and base units with ceramic sink and stainless steel extractor. Space for undercounter washer, tumble dryer and electric range cooker. Complete with two ceiling light points, two double glazed windows and uPVC door. Fitted with tiled walls and tiled flooring.

### Dining Room

13' 1" x 11' 4" (3.99m x 3.45m)

Complete with a ceiling light point, double glazed window and wall mounted radiator. Storage beneath the stairs. Fitted with laminate flooring.

### Landing

Complete with a ceiling light point, wall mounted radiator and carpet flooring. Loft access.

### Bedroom One

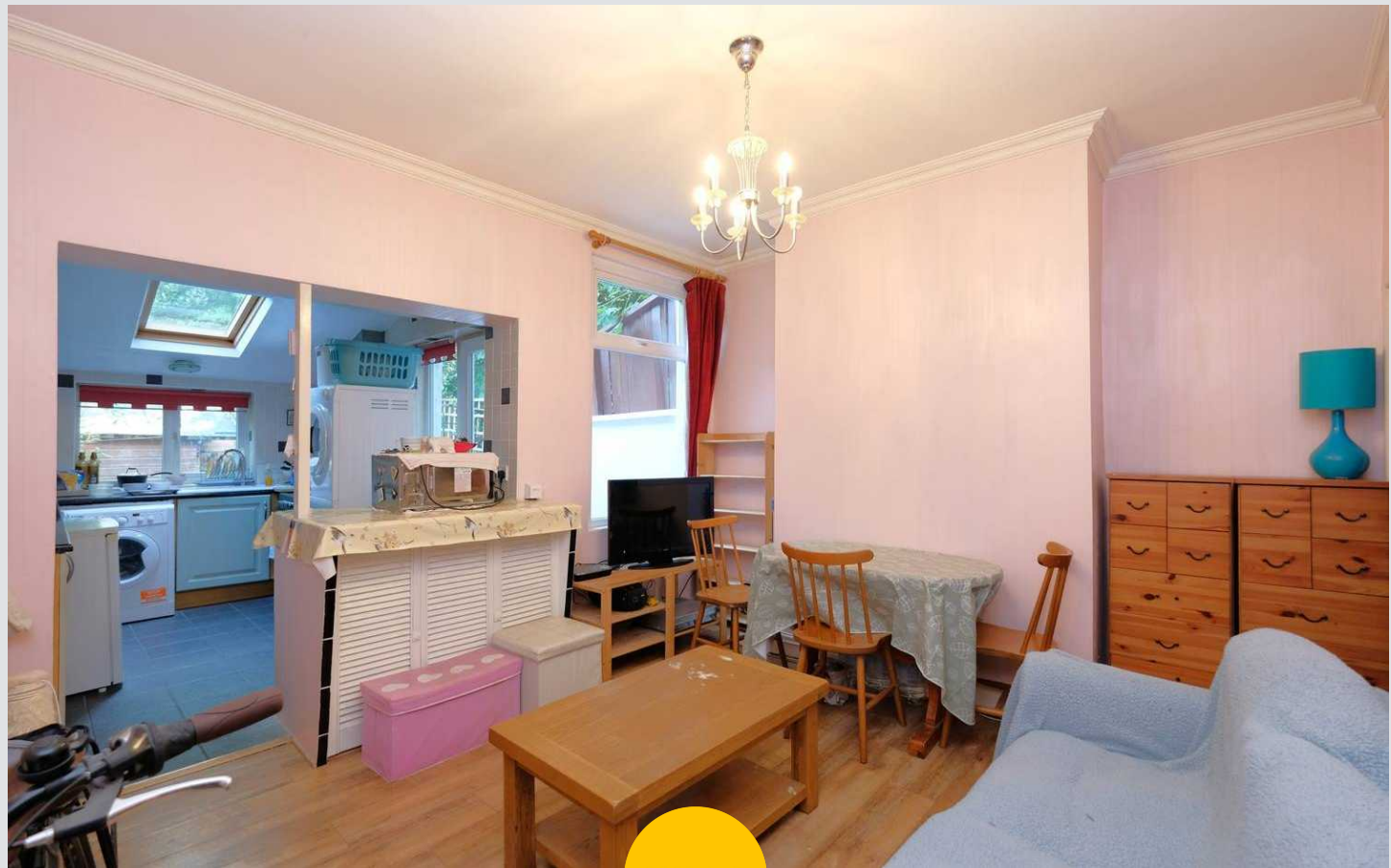
13' 2" x 10' 2" (4.01m x 3.10m)

Complete with a ceiling light point, double glazed window and wall mounted radiator. Fitted with carpet flooring.

### Bedroom Two

14' 3" x 5' 9" (4.34m x 1.75m)

Complete with a ceiling light point, double glazed window and wall mounted radiator. Fitted with carpet flooring.



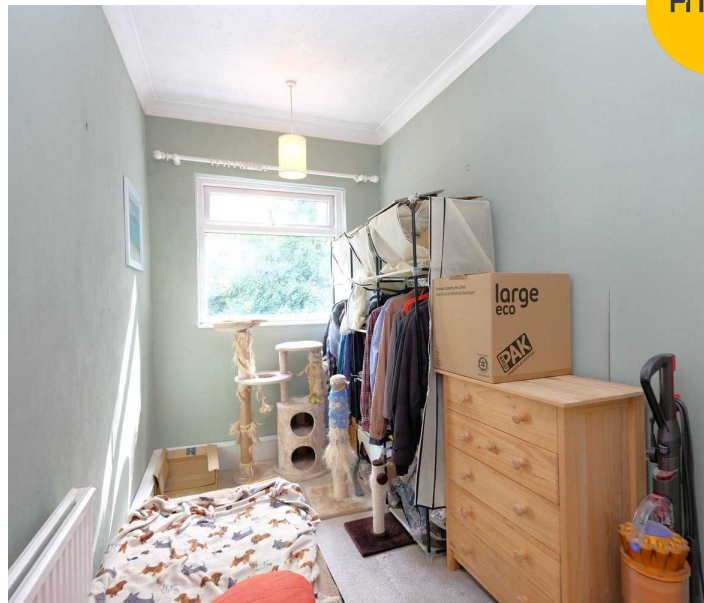
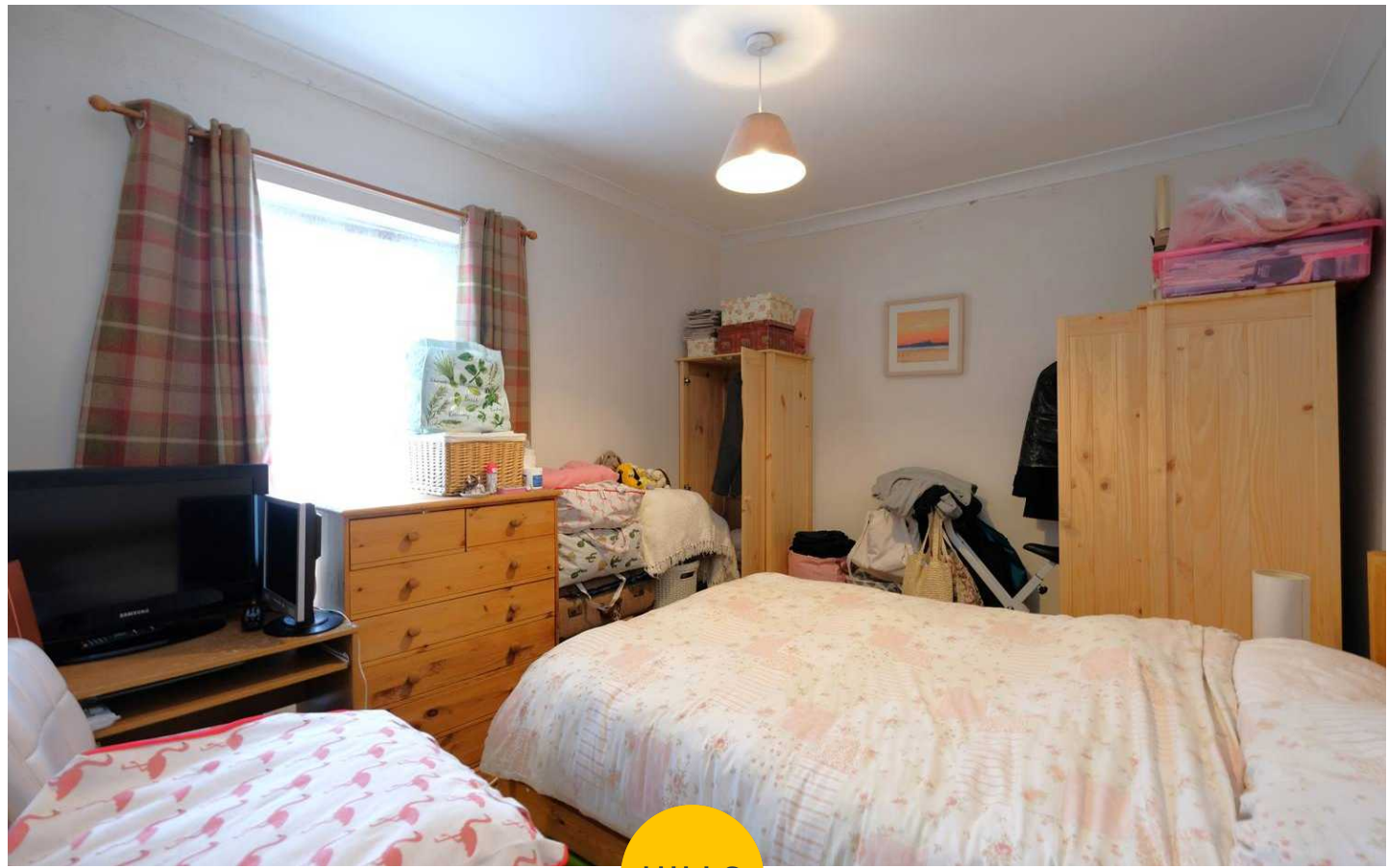
**Bathroom**

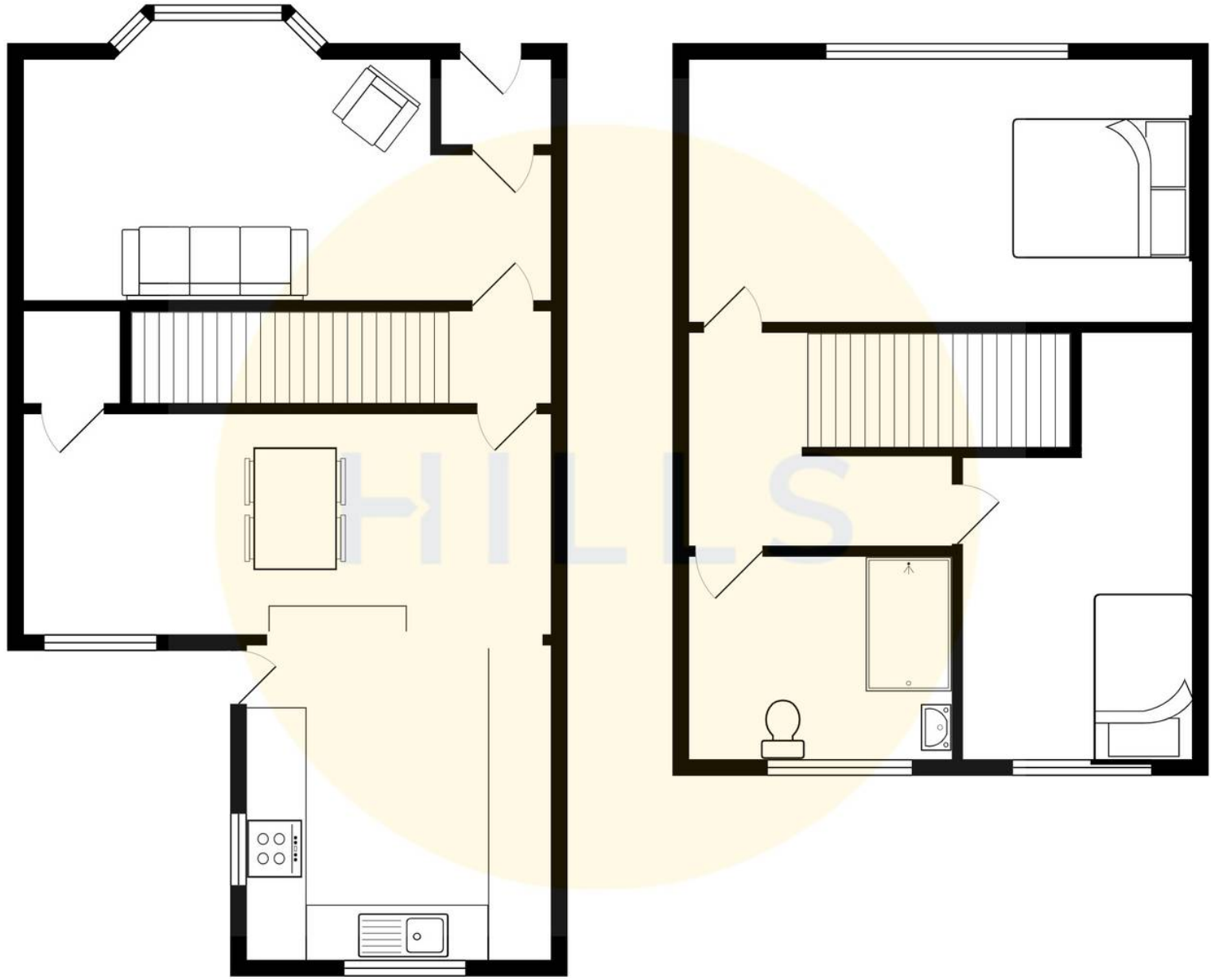
7' 7" x 6' 7" (2.31m x 2.01m)

Featuring a three-piece suite including a shower cubicle, vanity unit with hand wash basin and W.C. Complete with two ceiling light points, double glazed window and heated towel rail. Fitted with tiled walls and tiled flooring.

**Externally**

To the rear of the property is a garden with Indian stone paving and wooden shed. Gated rear access.







## Hills | Salfords Estate Agent

Hills Residential, Sentinel House Albert Street - M30 0SS

0161 707 4900

[sales@hills.agency](mailto:sales@hills.agency)

[www.hills.agency/](http://www.hills.agency/)



THE PROPERTY MISDESCRIPTIONS ACT 1991 The Agent has not tested any apparatus, equipment, fixtures and fittings or services and so cannot verify that they are in working order or fit for the purpose. A Buyer is advised to obtain verification from their Solicitor or Surveyor. References to the Tenure of a Property are based on information supplied by the Seller. The Agent has not had sight of the title documents. A Buyer is advised to obtain verification from their Solicitor. You are advised to check the availability of this property before travelling any distance to view. Every effort and precaution has been made to ensure these particulars are correct and not misleading but their accuracy is not guaranteed nor do they form part of any contract. If there is any point which is of particular importance to you, please contact us and we will provide any information you require. This is advisable, particularly if you intend to travel some distance to view the property. The mention of any appliances and services within these details does not imply that they are in full and efficient working order. These particulars are in draft form awaiting Vendors confirmation of their accuracy. These details must therefore be taken as a guide only.