

Ellesmere Avenue, Eccles

Manchester



In Excess of £650,000

Ellesmere Avenue

Eccles, Manchester

Nestled in Monton Village, this period semi-detached home offers five double beds, bay-fronted lounge, open-plan kitchen, beautiful gardens, off-road parking & garage. Conveniently located with amenities & transport links nearby, it combines elegance with modern comfort for family living. Council Tax band: E

Tenure: Leasehold

- Stunning Period Semi Detached home, Tucked Away on a Cul De Sac in the Desirable Monton Village, Making the Perfect Family Home
- Laid Over Four Floors
- Bay Fronted, Open Plan Lounge & Dining Room
- Stunning Open Plan Kitchen & Dining Space with Gorgeous Central Fire Place and Second Kitchen in the Basement
- Five Fabulous Double Bedrooms, Two With Fitted Wardrobes
- Modern Three Piece Family Bathroom Suite & Shower Room to the Ground Floor
- Off Road Parking for Multiple Cars & Detached Garage
- Beautifully Kept gardens that Wraps Around the Front, Side & Rear of the Property
- Excellently Located Close to a Plethora of Amenities & Brilliant Transport Links



Entrance Hallway

Featuring ceiling light point, wall light point, wall - mounted radiator, power point. Complete with basement access, hardwood door. Fitted with laminate flooring.

Lounge

26' 8" x 13' 1" (8.13m x 3.99m)

Featuring six ceiling light points, ceiling wall point, four wall light points, two single glazed bay windows, two wall - mounted radiators, gas fire, power point.

Kitchen

16' 7" x 13' 9" (5.05m x 4.19m)

Featuring ceiling light spotlights, two wall light points, four double glazed windows, wall - mounted radiator, power point. Complete with wall and base units, stainless steel sink, gas fire. Space for dishwasher. Fitted with laminate flooring.

Downstairs shower room

4' 8" x 4' 1" (1.42m x 1.24m)

Featuring three piece suite including hand wash basin, w/c, shower tray. Complete with single glazed window, wall - mounted radiator. Fitted with tiled walls and flooring.

Landing

Featuring ceiling wall point, two wall points, wall - mounted radiator.

Bathroom

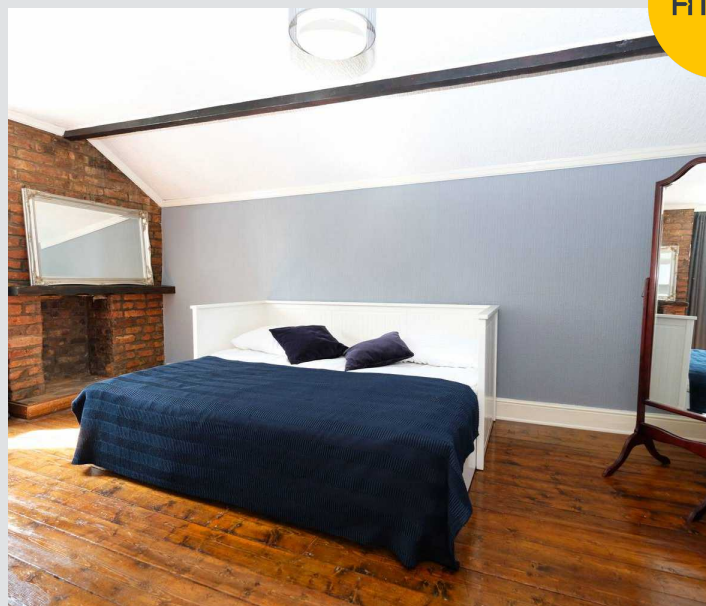
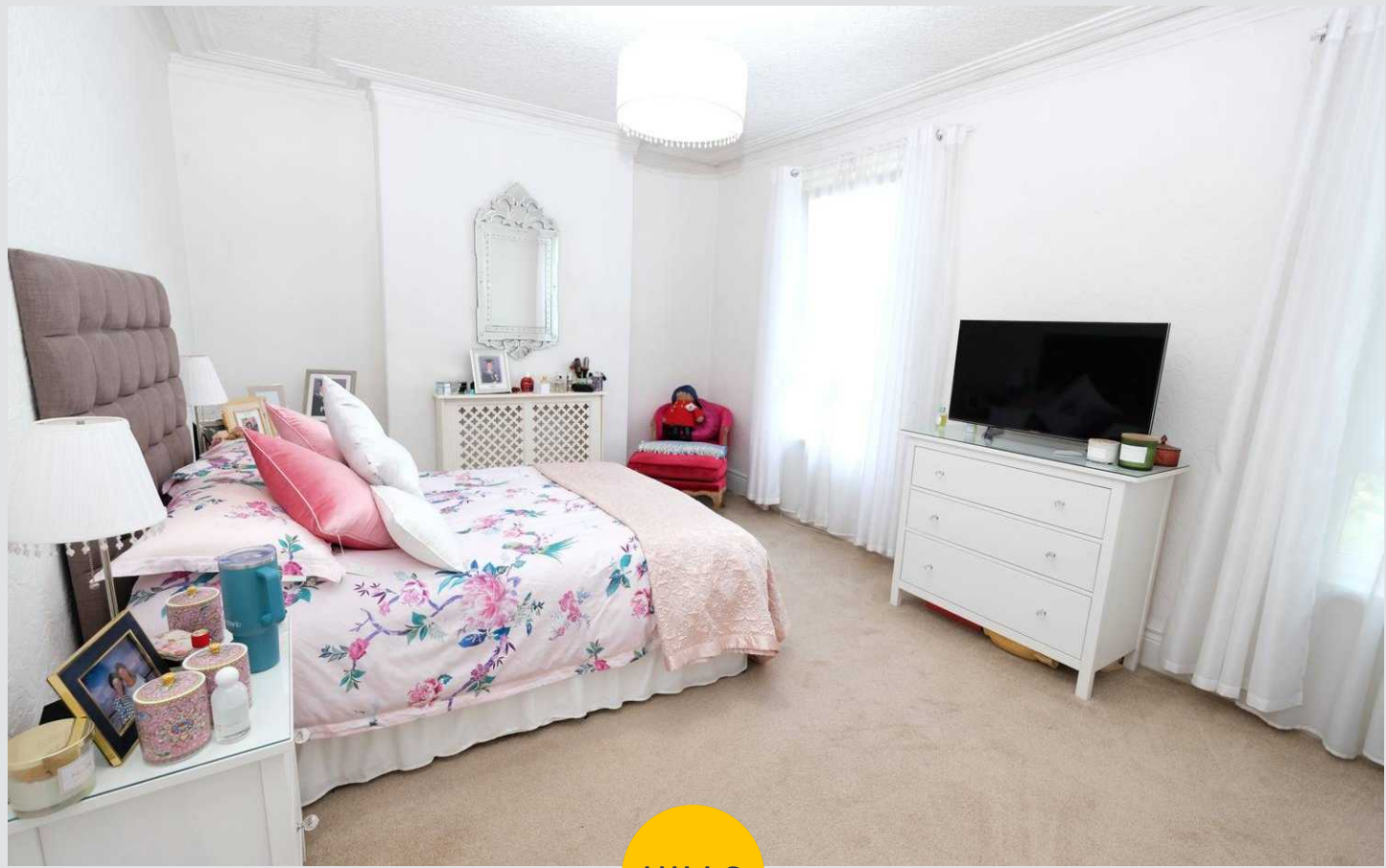
7' 7" x 5' 3" (2.31m x 1.60m)

Featuring three piece suite including bath with shower overhead, hand wash basin, w/c. Complete with double glazed windows, ceiling spotlights. Fitted with part tiled walls and lino flooring.

Bedroom One

16' 8" x 11' 9" (5.08m x 3.58m)

Featuring ceiling light point, ceiling wall point, wall - mounted radiator, two double glazed windows, power point.



Landing

Featuring ceiling wall point, wall light point, wall - mounted radiator.

Bedroom Two

11' 8" x 10' 4" (3.56m x 3.15m)

Featuring ceiling light point, two wall light point, double glazed windows, wall - mounted radiator, power point. Complete with gas fire. Fitted with hardwood flooring.

Bedroom Three

10' 9" x 8' 7" (3.28m x 2.62m)

Featuring ceiling light point, ceiling wall point, wall - mounted radiator, double glazed window, power point. Complete with fitted wardrobes.

Landing

Featuring ceiling wall point, two wall light points. Complete with velux door.

Bedroom Four

13' 9" x 10' 9" (4.19m x 3.28m)

Featuring ceiling light point, ceiling wall point, two wall light points, double glazed windows, wall - mounted radiator, power point. Complete with a wooden ceiling beam, fitted wardrobes.

Bedroom Five

15' 9" x 11' 7" (4.80m x 3.53m)

Featuring ceiling light point, double glazed window, wall - mounted radiator, power point. Complete with storage, open brick fire place. Fitted with hardwood flooring.

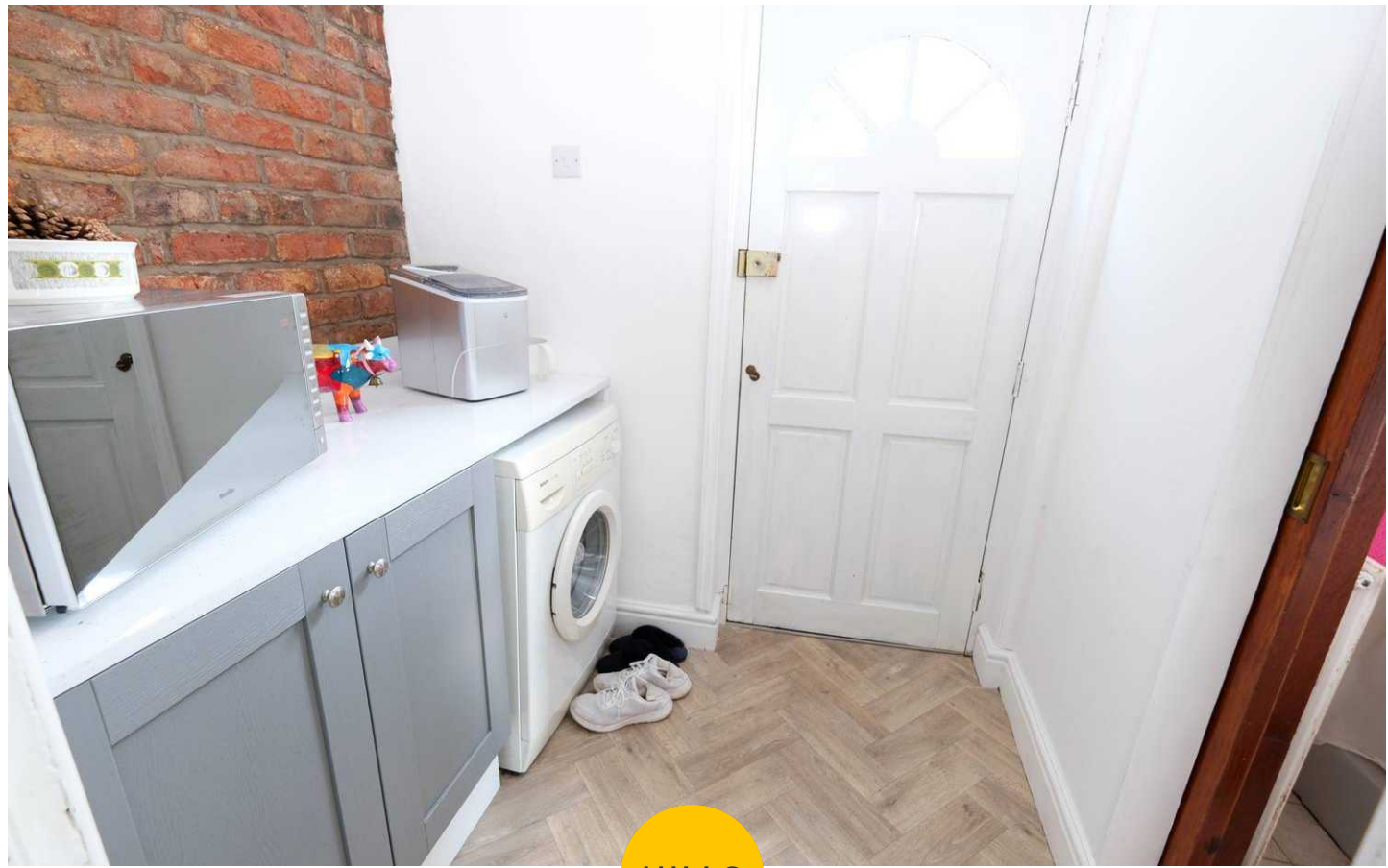
Basement

13' 6" x 11' 3" (4.11m x 3.43m)

Featuring two ceiling light points, integrated microwave, gas hob, power point, composite sink, open fire, wall and base units. Complete with electric oven, boiler (1982 installed). Space for dryer. Fitted with concrete flooring.

External

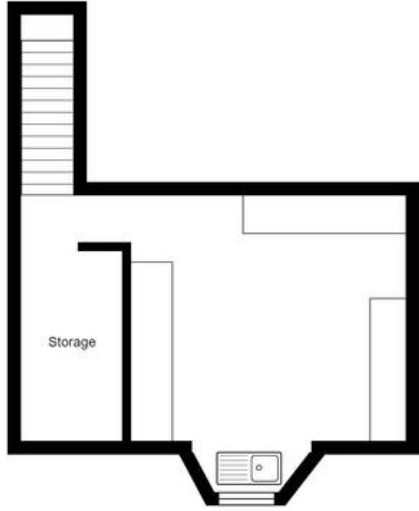
To the rear of the property is concrete raised seating, detached garage, raised paved seating. Two lawns divided by raised beds boarded by shrubbery, power point. To the front of the property is off road parking for multiple cars, external wall light point.

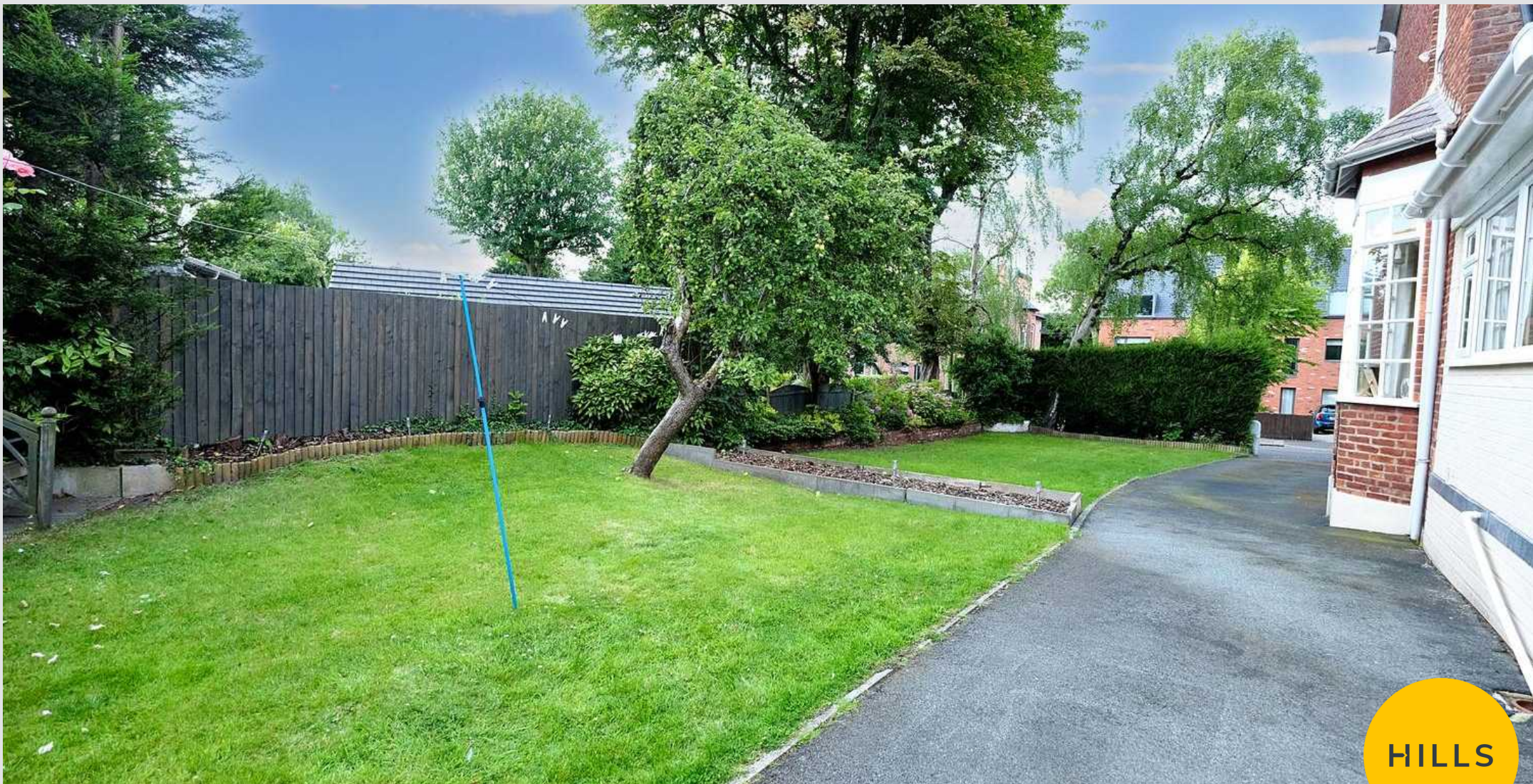




HILLS







HILLS

Hills | Salfords Estate Agent

Hills Residential, Sentinel House Albert Street - M30 0SS

0161 707 4900

sales@hills.agency

www.hills.agency/



THE PROPERTY MISDESCRIPTIONS ACT 1991 The Agent has not tested any apparatus, equipment, fixtures and fittings or services and so cannot verify that they are in working order or fit for the purpose. A Buyer is advised to obtain verification from their Solicitor or Surveyor. References to the Tenure of a Property are based on information supplied by the Seller. The Agent has not had sight of the title documents. A Buyer is advised to obtain verification from their Solicitor. You are advised to check the availability of this property before travelling any distance to view. Every effort and precaution has been made to ensure these particulars are correct and not misleading but their accuracy is not guaranteed nor do they form part of any contract. If there is any point which is of particular importance to you, please contact us and we will provide any information you require. This is advisable, particularly if you intend to travel some distance to view the property. The mention of any appliances and services within these details does not imply that they are in full and efficient working order. These particulars are in draft form awaiting Vendors confirmation of their accuracy. These details must therefore be taken as a guide only.