



Holden Drive, Pendlebury

Manchester



In Excess of £270,000

39 Holden Drive

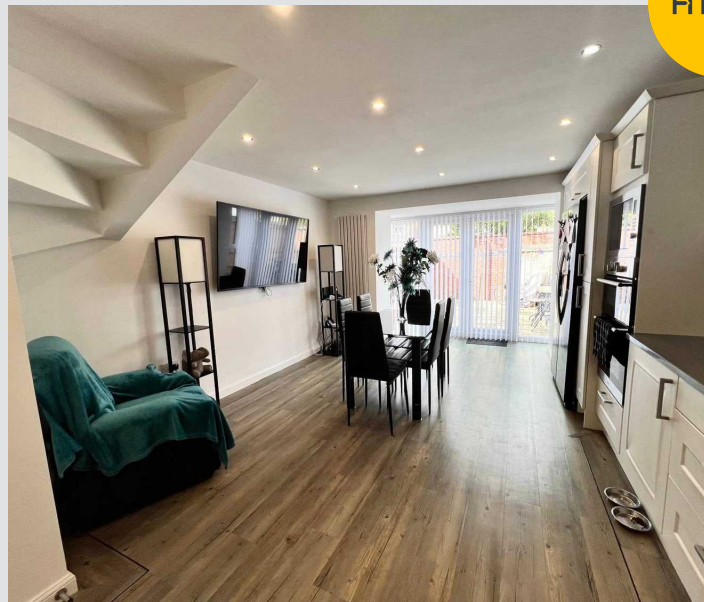
Pendlebury, Manchester

* SPACIOUS MODERN FAMILY HOME * LOCATED ON THE DESIRABLE NIGHTINGALE GARDENS DEVELOPMENT, this FANTASTIC FAMILY HOME offers an ABUNDANCE OF SPACE. Spread over three floors the property features 4 GENEROUS BEDROOMS (three of which are doubles), a family bathroom, EN-SUITE to the master bedroom, and

Council Tax band: C

Tenure: Leasehold

- FANTASTIC MODERN FAMILY HOME
- LOCATED ON THE DESIRABLE NIGHTINGALE GARDENS DEVELOPMENT
- 4 GENEROUS BEDROOMS
- FITTED MODERN OPEN-PLAN KITCHEN & DINING AREA
- SPACIOUS FIRST FLOOR LOUNGE
- FAMILY BATHROOM, EN-SUITE, AND DOWNSTAIRS W.C
- LOW MAINTENANCE GARDEN TO THE REAR
- CLOSE TO MANY LOCAL AMENITIES, SCHOOLS, AND TRANSPORT LINKS
- 2 ALLOCATED PARKING SPACES



En-Suite

Dimensions: 5' 3" x 5' 0" (1.60m x 1.52m).

Family Bathroom

Dimensions: 5' 10" x 6' 3" (1.78m x 1.90m).

Lounge

Dimensions: 12' 4" x 13' 8" (3.76m x 4.16m).

Externally

The property has a low maintenance rear garden, grassed area to the front and two allocated parking spaces.

Bedroom Four

Dimensions: 6' 0" x 9' 2" (1.83m x 2.79m).

Down stairs W.C.

Dimensions: 2' 9" x 5' 6" (0.84m x 1.68m).

Master Bedroom

Dimensions: 12' 4" x 10' 1" (3.76m x 3.07m).

Kitchen/Diner

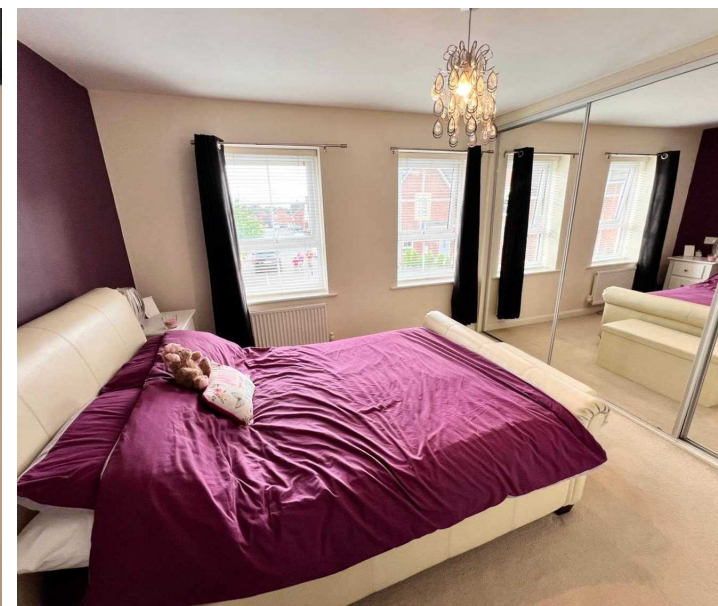
Dimensions: 24' 6" x 12' 4" (7.46m x 3.76m).

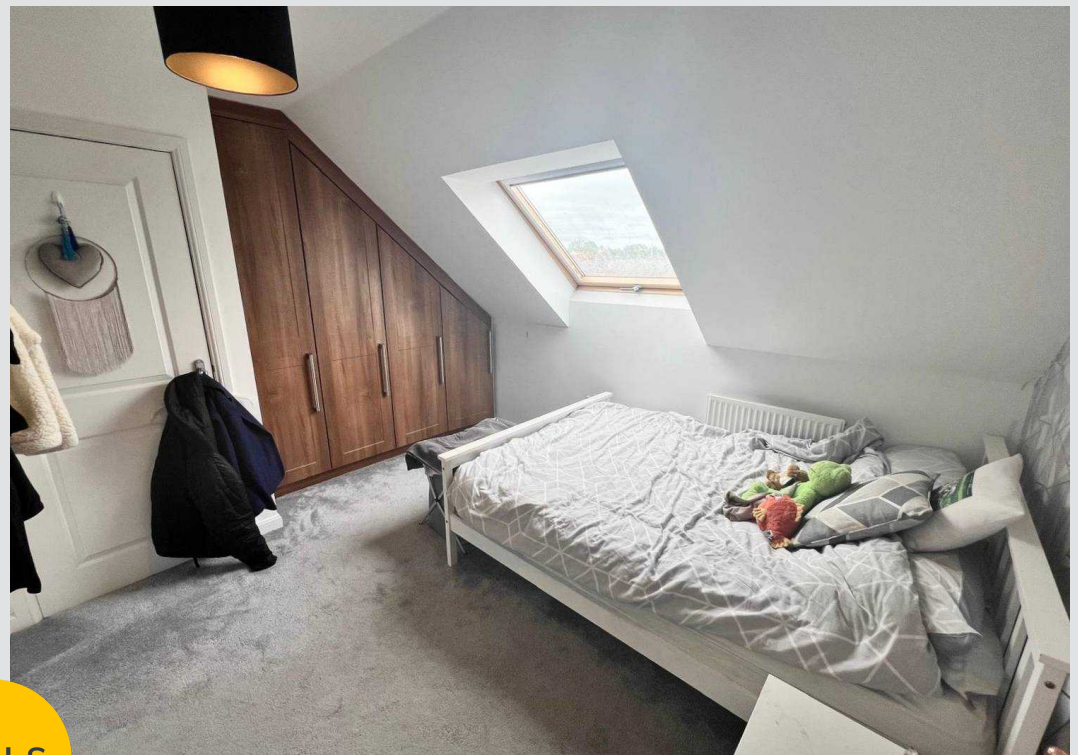
Bedroom Three

Dimensions: 12' 4" x 10' 3" (3.76m x 3.12m).

Bedroom Two

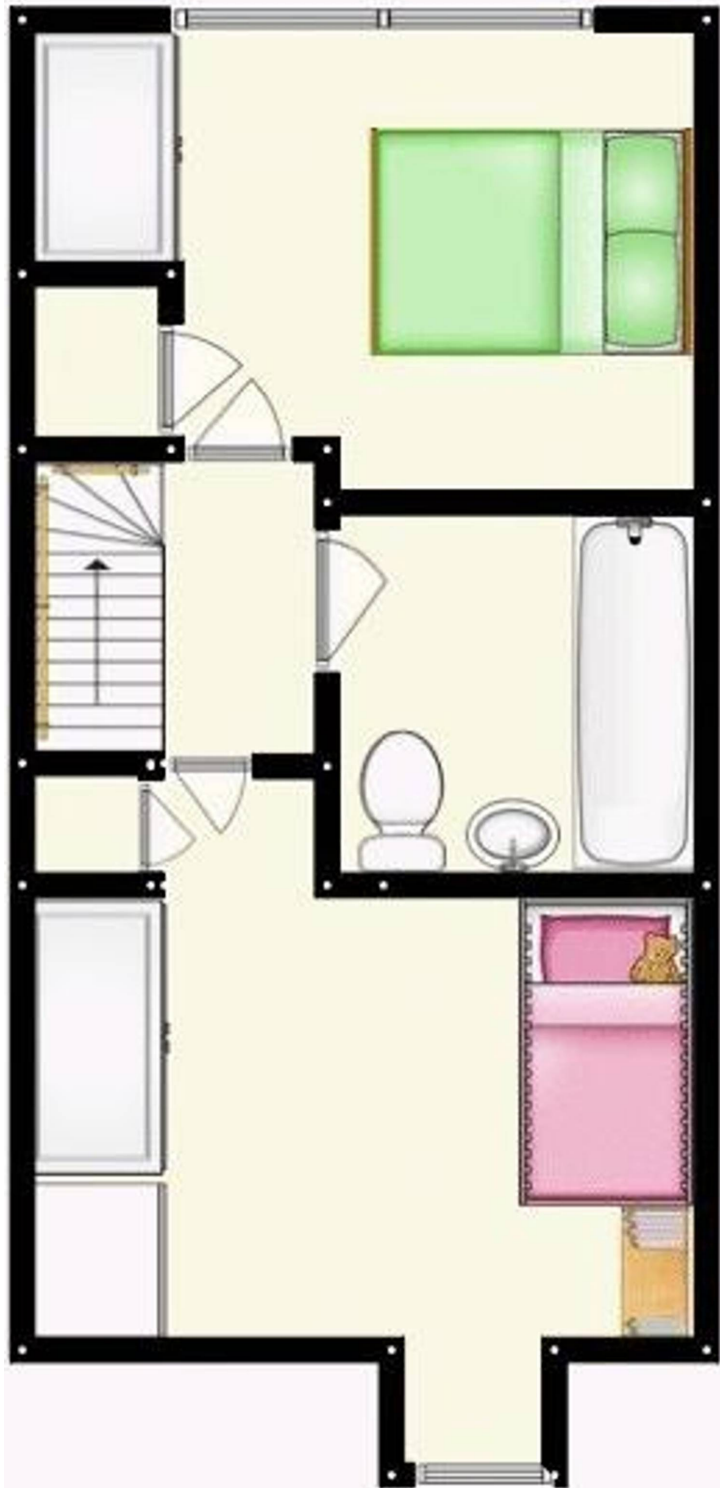
Dimensions: 12' 4" x 11' 0" (3.76m x 3.35m).





HILLS







Hills Swinton | Salfords Estate Agent

4 Pendlebury Road, Swinton - M27 4AR

0161 794 2888

swinton@hills.agency

www.hills.agency/



THE PROPERTY MISDESCRIPTIONS ACT 1991 The Agent has not tested any apparatus, equipment, fixtures and fittings or services and so cannot verify that they are in working order or fit for the purpose. A Buyer is advised to obtain verification from their Solicitor or Surveyor. References to the Tenure of a Property are based on information supplied by the Seller. The Agent has not had sight of the title documents. A Buyer is advised to obtain verification from their Solicitor. You are advised to check the availability of this property before travelling any distance to view. Every effort and precaution has been made to ensure these particulars are correct and not misleading but their accuracy is not guaranteed nor do they form part of any contract. If there is any point which is of particular importance to you, please contact us and we will provide any information you require. This is advisable, particularly if you intend to travel some distance to view the property. The mention of any appliances and services within these details does not imply that they are in full and efficient working order. These particulars are in draft form awaiting Vendors confirmation of their accuracy. These details must therefore be taken as a guide only.