



Rivington Road

Salford



Offers Over £350,000

Rivington Road

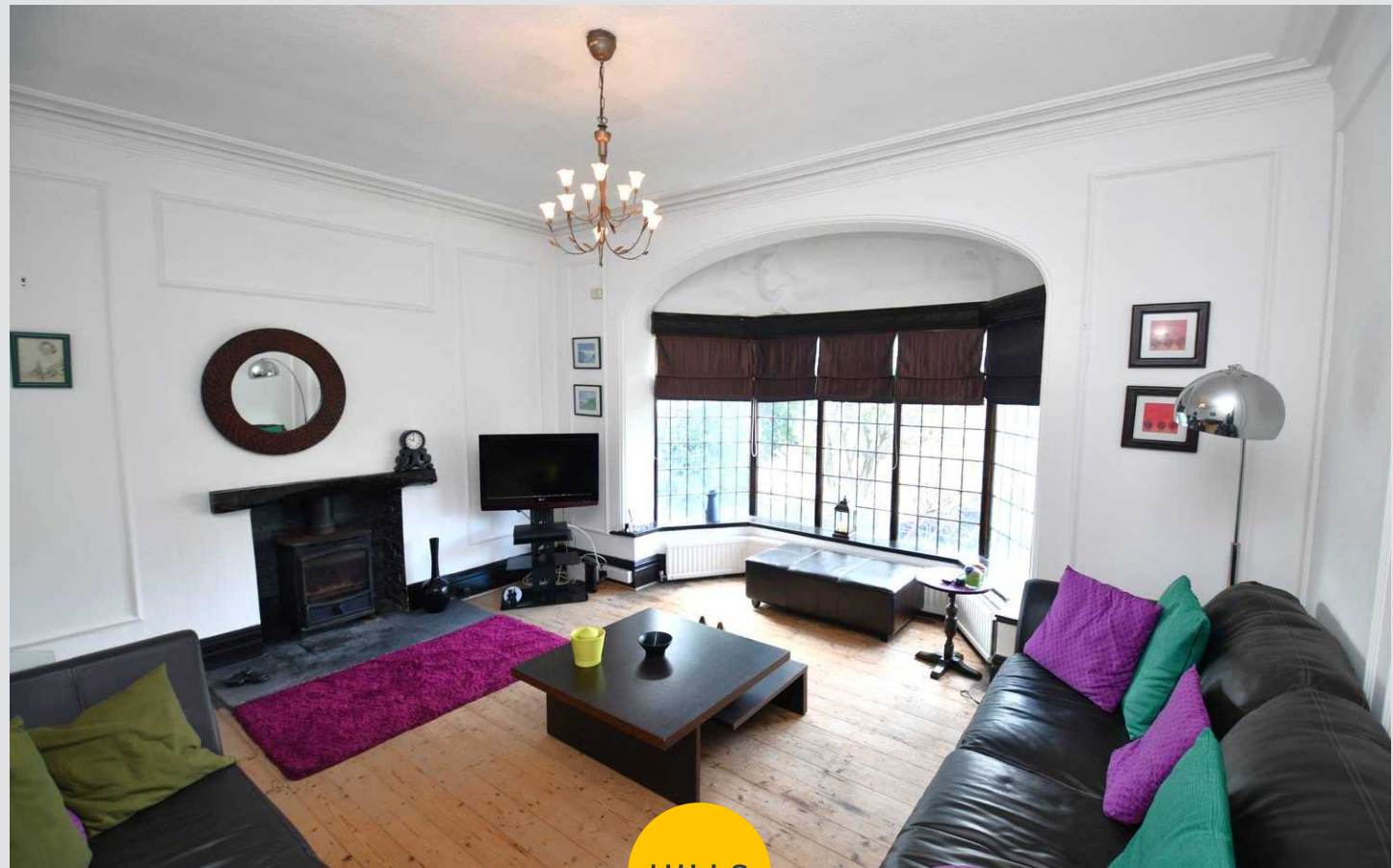
Salford

Bursting with original features and situated in a popular residential area, just a stone's throw from Buile Hill Park, is this large, four bedroom period property!

Council Tax band: D

Tenure: Leasehold

- Period Four Bedroom, Semi-Detached Family Home
- Just a Stone's Throw from Buile Hill Park, and Within Walking Distance of Salford Royal Hospital
- Within Easy Access of Local Schooling, and Transport Links into Salford Quays, Media City and Manchester City Centre
- Large, Bay-Fronted Lounge and a Separate Dining Room
- Modern Fitted Kitchen Diner and a Utility Room
- Four Well-Proportioned Bedrooms
- Mature Gardens to the Front and Rear
- Benefits from Cellars with the Potential for Further Development
- Viewing is Highly Recommended to Appreciate the Wealth of Space this Property has to Offer!



HILLS



Entrance Hallway

Featuring ceiling light point, single glazed window, wall - mounted radiator. Fitted with laminate flooring.

Lounge

14' 10" x 11' 11" (4.51m x 3.63m)

Featuring ceiling light point, double glazed bay window, wall - mounted radiator. Fitted with wooden flooring.

Dining room

16' 0" x 11' 3" (4.87m x 3.44m)

Featuring ceiling light point, single glazed bay window, wall - mounted radiator, single glazed window. Fitted with carpet flooring.

Kitchen/diner

14' 10" x 9' 9" (4.51m x 2.97m)

Featuring ceiling light point, two single glazed window, fitted units, integrated fridge and freezer. Space for freestanding range cooker. Fitted with wooden flooring.

Utility

11' 2" x 4' 8" (3.41m x 1.43m)

Featuring ceiling light point, double glazed window, wall - mounted radiator. Complete with fitted units. Space for washer.

Landing

Featuring ceiling light point, spotlights. Fitted with laminate flooring.

Bedroom One

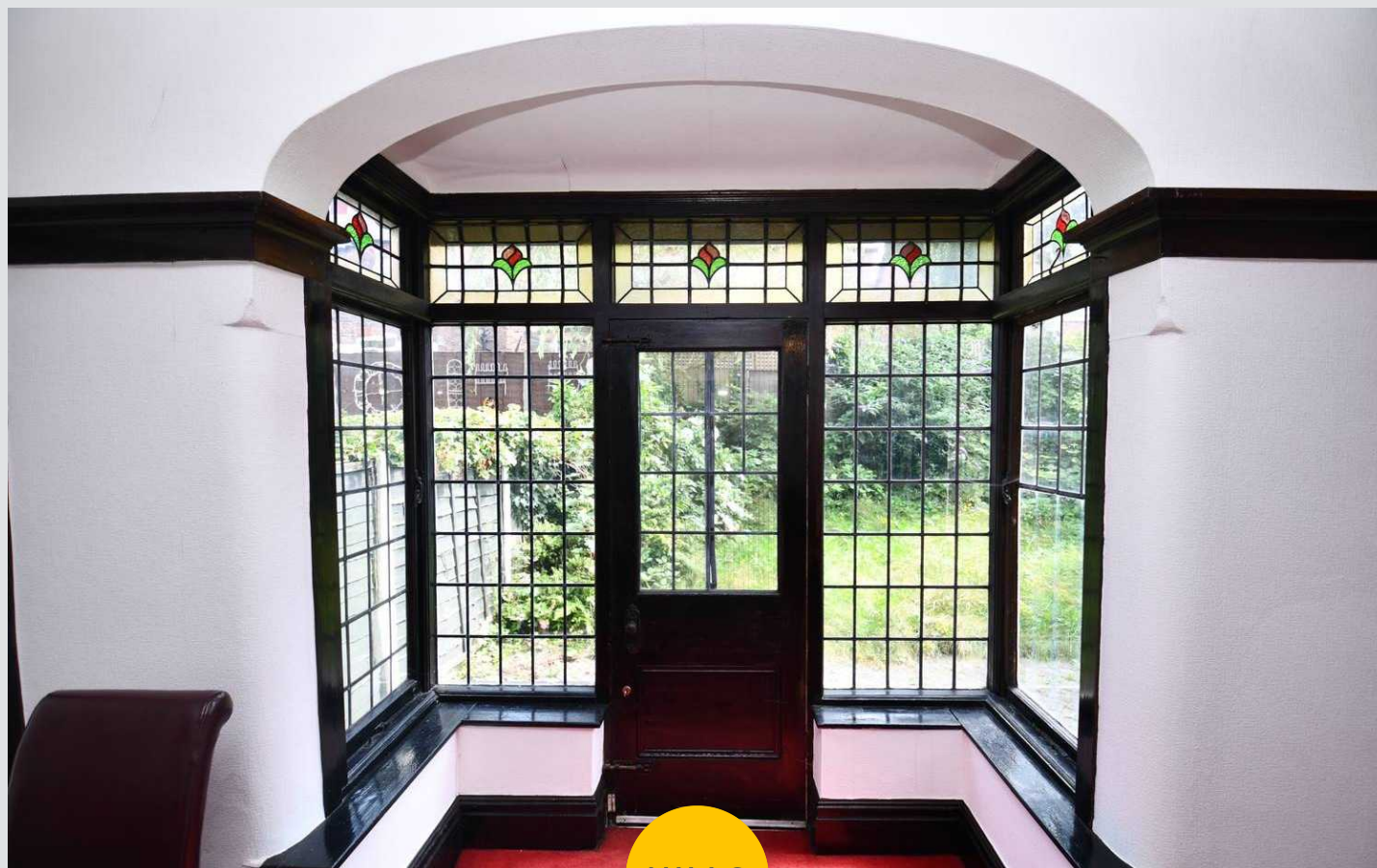
13' 4" x 12' 0" (4.06m x 3.65m)

Featuring wall light point, double glazed bay window, wall - mounted radiator. Complete with fitted furniture. Fitted with laminate flooring.

Bedroom Two

14' 10" x 9' 9" (4.52m x 2.98m)

Featuring ceiling light point, double glazed window, wall - mounted radiator. Complete with fitted furniture. Fitted with carpet flooring.



Bedroom Three

11' 11" x 11' 3" (3.64m x 3.43m)

Featuring ceiling light point, double glazed window, wall - mounted radiator. Complete with fitted furniture. Fitted with laminate flooring.

Bedroom Four

9' 1" x 7' 7" (2.77m x 2.30m)

Featuring ceiling light point, double glazed window, wall - mounted radiator. Complete with fitted furniture. Fitted with carpet flooring.

Bathroom

7' 6" x 5' 2" (2.29m x 1.58m)

Featuring two piece suite including hand wash basin, bath with a shower overhead. Complete with spotlights, double glazed window. Fitted with tiled flooring.

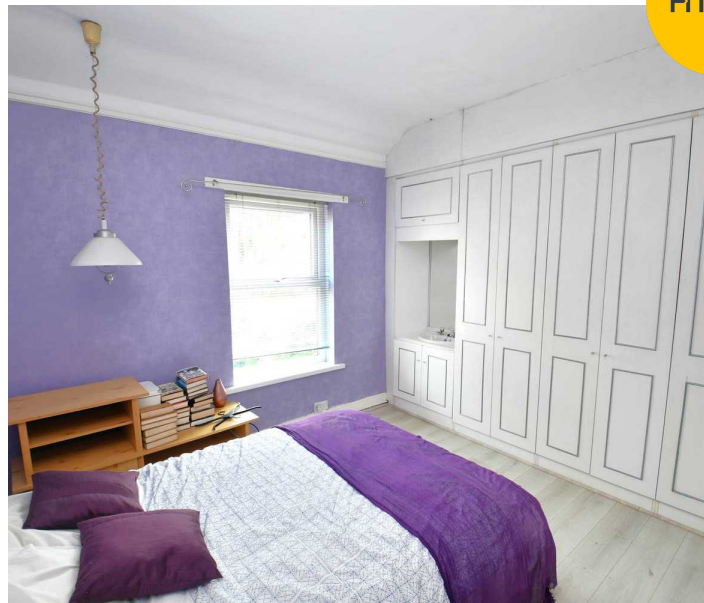
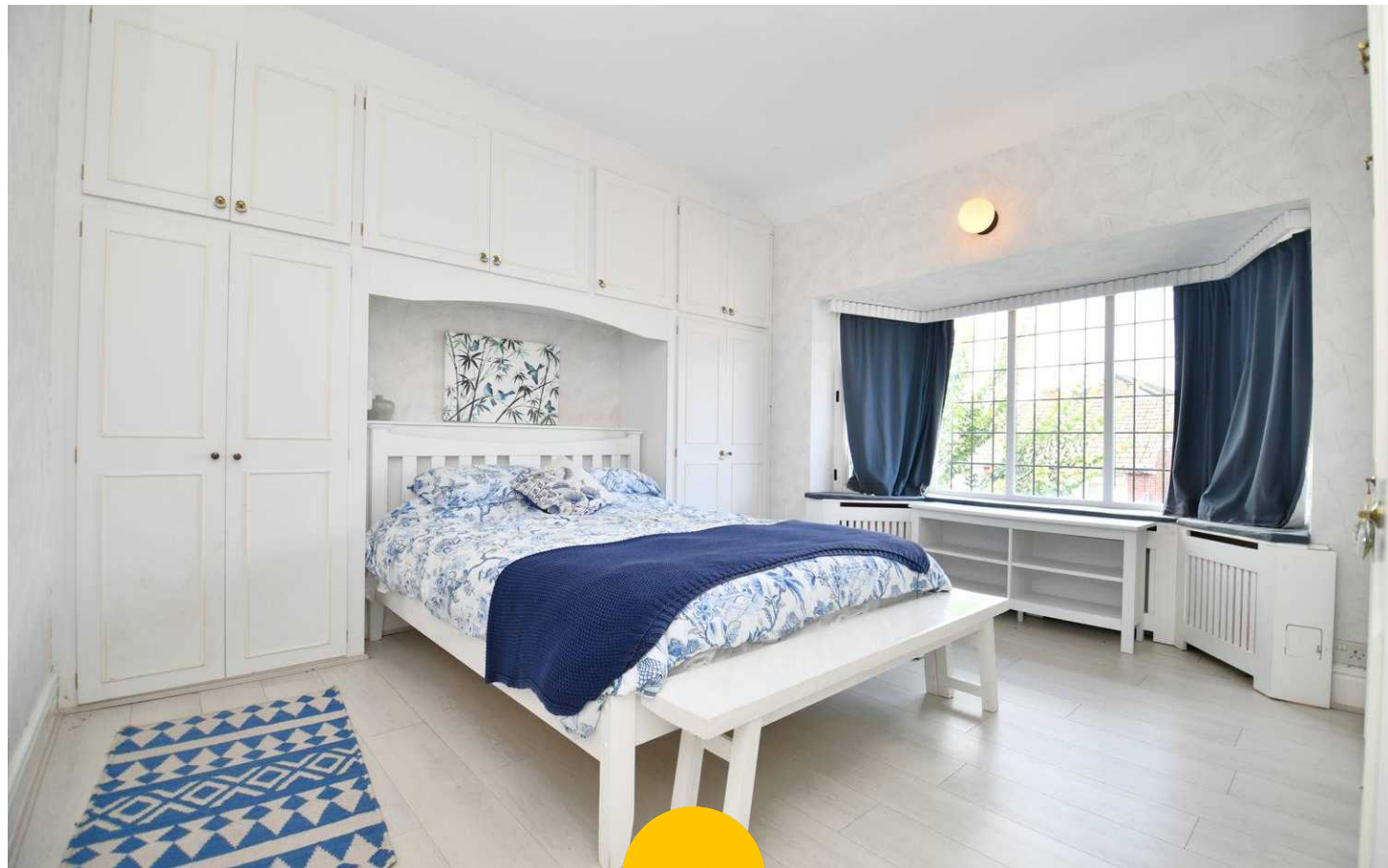
w/c

7' 8" x 3' 1" (2.33m x 0.94m)

Featuring spotlights, double glazed window, w/c. Complete with part tiled walls. Fitted with laminate flooring.

External

To the front of the property is paving and mature plants to the front garden. To the rear of the property is paving and mature garden to the rear of the property.



Chamber One
10' 8" x 5' 9" (3.26m x 1.75m)
Featuring ceiling light point.

Chamber Two
14' 3" x 9' 6" (4.34m x 2.89m)
Featuring ceiling light point.

Chamber Three
10' 8" x 9' 9" (3.24m x 2.96m)
Featuring ceiling light point.

Chamber Four
Featuring ceiling light point.

Chamber Five
4' 8" x 2' 6" (1.41m x 0.75m)
Featuring ceiling light point, w/c.

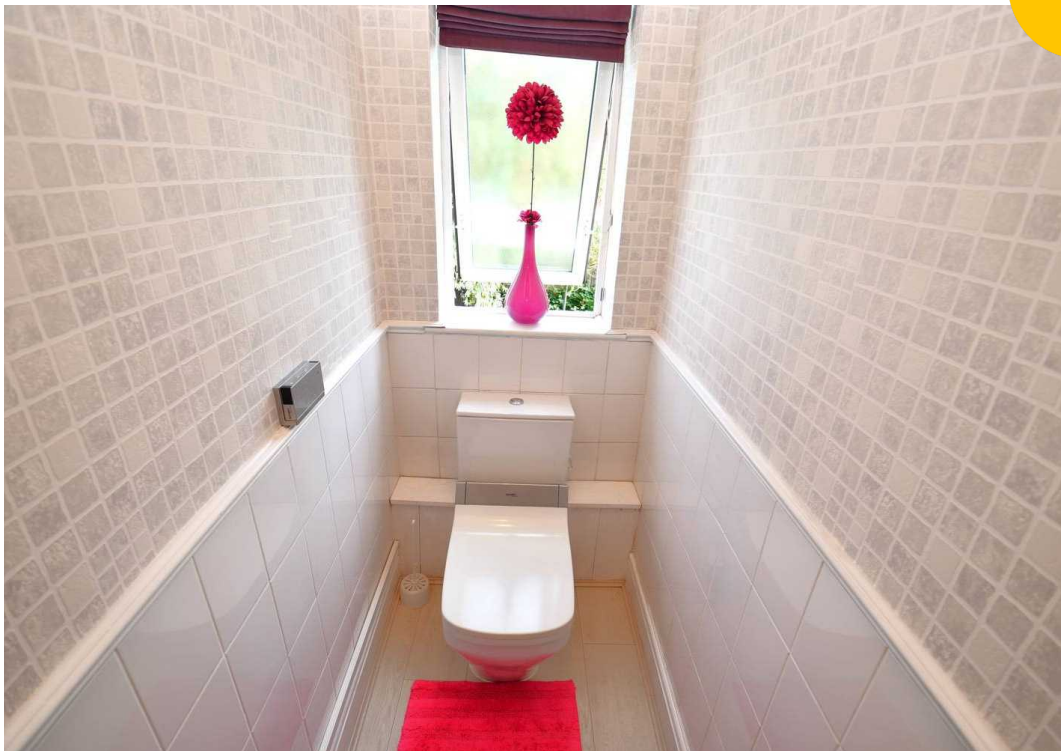


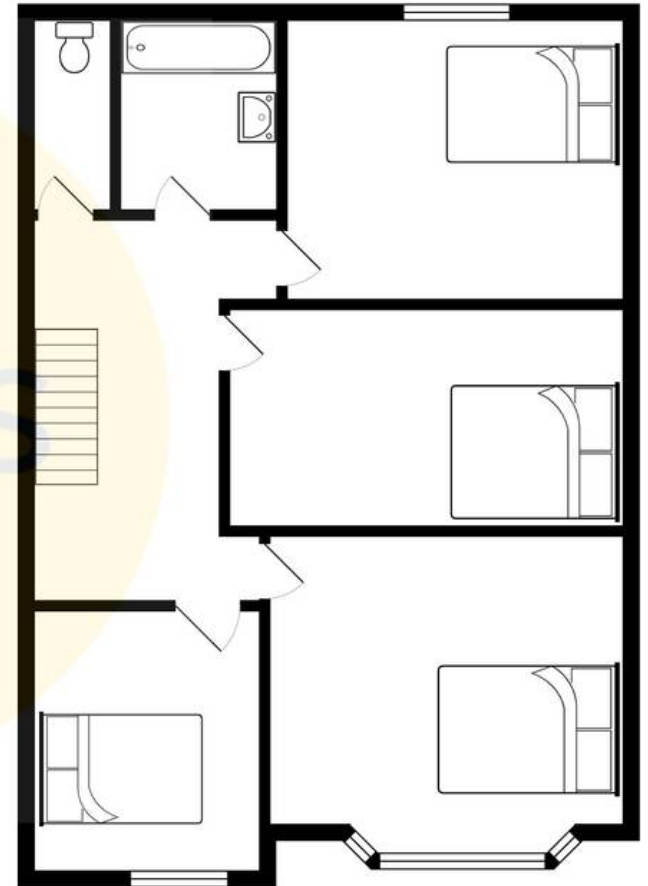
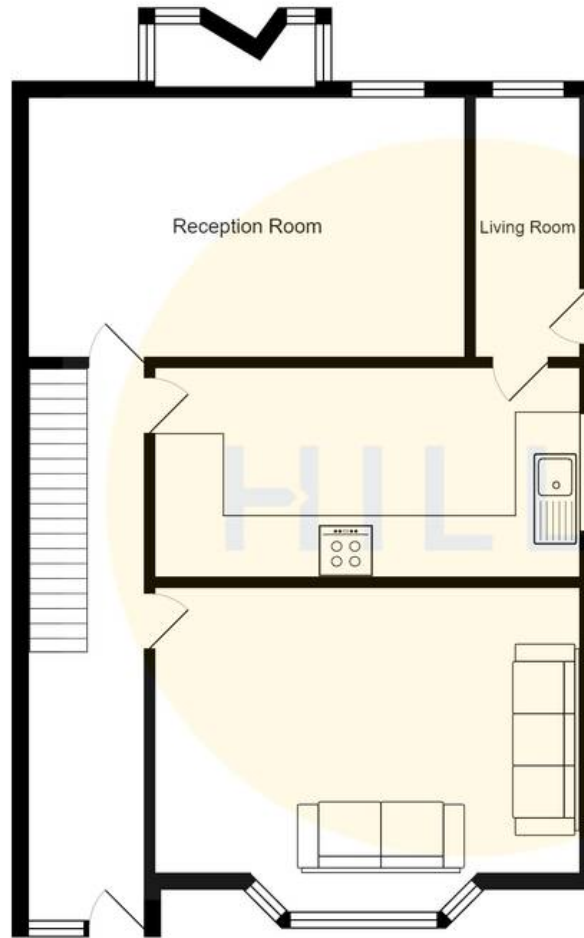
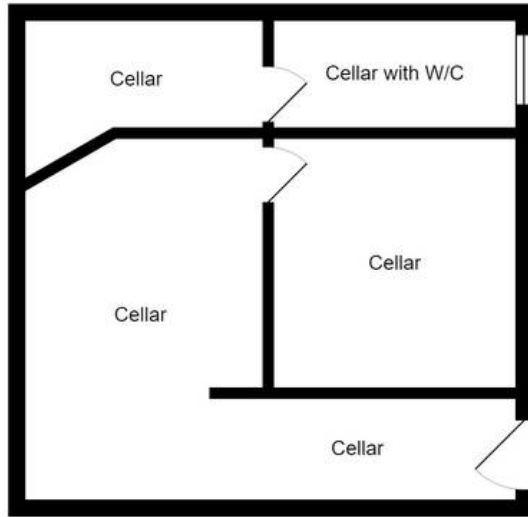
HILLS





HILLS







Hills | Salfords Estate Agent

Hills Residential, Sentinel House Albert Street – M30 0SS

0161 707 4900

sales@hills.agency

www.hills.agency/



THE PROPERTY MISDESCRIPTIONS ACT 1991 The Agent has not tested any apparatus, equipment, fixtures and fittings or services and so cannot verify that they are in working order or fit for the purpose. A Buyer is advised to obtain verification from their Solicitor or Surveyor. References to the Tenure of a Property are based on information supplied by the Seller. The Agent has not had sight of the title documents. A Buyer is advised to obtain verification from their Solicitor. You are advised to check the availability of this property before travelling any distance to view. Every effort and precaution has been made to ensure these particulars are correct and not misleading but their accuracy is not guaranteed nor do they form part of any contract. If there is any point which is of particular importance to you, please contact us and we will provide any information you require. This is advisable, particularly if you intend to travel some distance to view the property. The mention of any appliances and services within these details does not imply that they are in full and efficient working order. These particulars are in draft form awaiting Vendors confirmation of their accuracy. These details must therefore be taken as a guide only.