

Westwood Crescent, Eccles

Manchester



Offers Over £220,000

Westwood Crescent

Eccles, Manchester

Impressive terraced property in sought-after area located just a short walk to Monton Village. Spacious living to the ground floor, three generous bedrooms, family bathroom, gated parking, sun drenched rear garden. Close to schools, amenities, and transport links. Ideal for first-time buyers or families seeking a comfortable home.

Council Tax band: A

Tenure: Freehold

- Deceptively Spacious Terrace Property Located Within a Popular Residential Area Close to Monton Village
- Two Reception Rooms
- Spacious Fitted Kitchen
- Three Generous Bedrooms
- Family Bathroom & Separate W.C.
- Ample Storage Throughout
- Gated Off Road Parking
- Sun Drenched Rear Garden with Lawn & Paved Patio, and Surrounding Trees Offering Privacy
- Close to Highly Regarded Primary & Secondary Schools
- Surrounded by Excellent Amenities & Transport Links and Just a Short Walk into Monton Village



HILLS

Entrance Hallway

Featuring ceiling light point, PVC door. Fitted with lino flooring.

Kitchen

15' 2" x 7' 1" (4.62m x 2.16m)

Featuring ceiling light point, two double glazed windows, power point. Complete with stainless steel sink, PVC door. Space for washer, gas hob, electric oven, stainless steel extractor. Fitted with part tiled walls and tiled flooring.

Reception One

18' 6" x 11' 6" (5.64m x 3.51m)

Featuring ceiling light point, double glazed window, wall - mounted radiator, power point. Complete with electric fire and French doors. Fitted with carpet flooring.

Reception Two

11' 9" x 9' 9" (3.58m x 2.97m)

Featuring ceiling light point, double glazed window, wall - mounted radiator, power point. Fitted with carpet flooring.

w/c

6' 5" x 2' 5" (1.96m x 0.74m)

Featuring ceiling light point, double glazed window, w/c, hand wash basin. Complete with tiled walls and flooring.

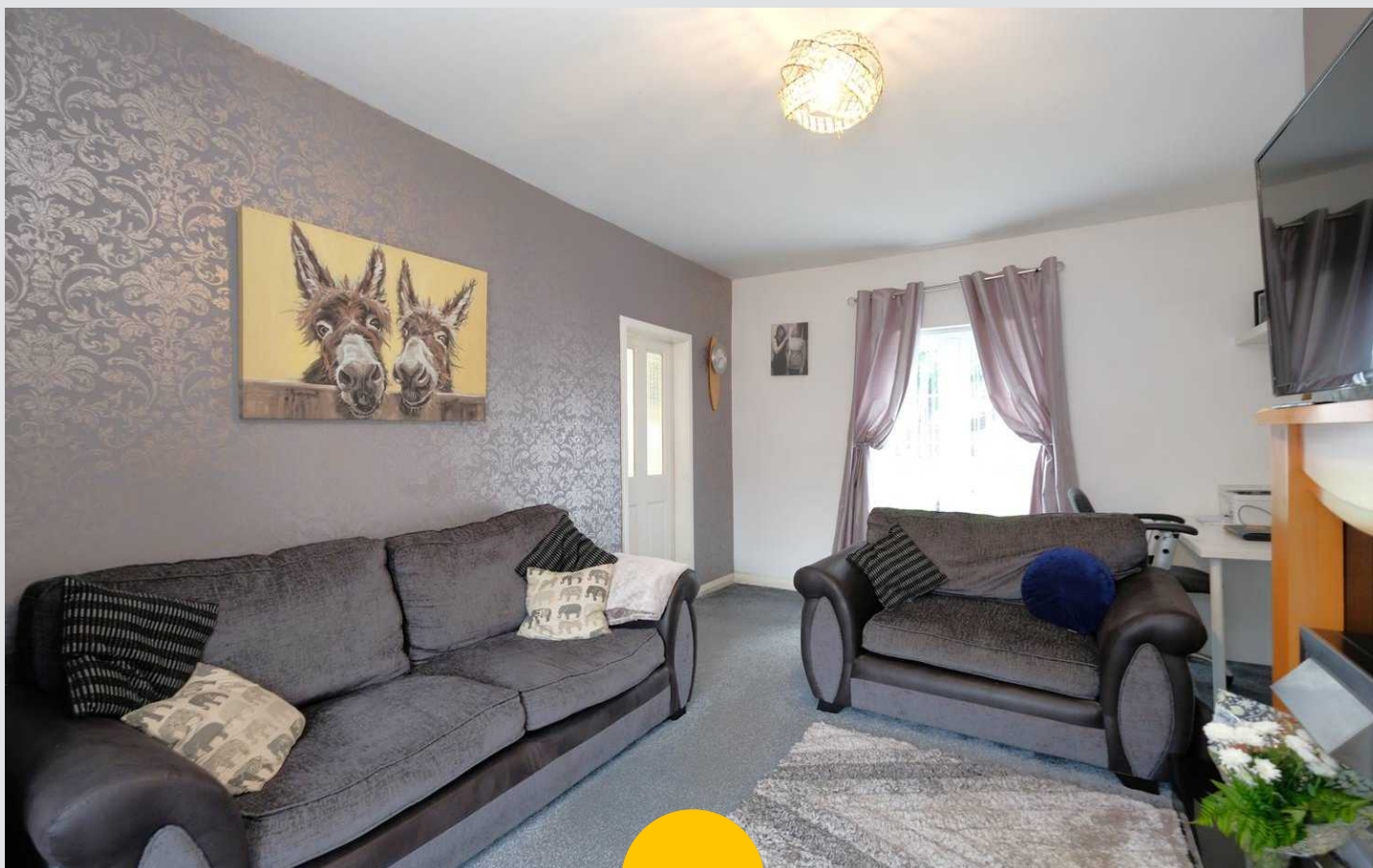
Landing

Featuring loft access, power point. Fitted with carpet flooring.

Bedroom One

16' 5" x 9' 9" (5.00m x 2.97m)

Featuring ceiling light point, two double glazed windows, wall - mounted radiator, power point. Complete with fitted wardrobes. Fitted with carpet flooring.



Bedroom Two

14' 9" x 11' 7" (4.50m x 3.53m)

Featuring ceiling light point, two double glazed windows, wall - mounted radiator, power point. Fitted with carpet flooring.

Bedroom Three

8' 5" x 7' 6" (2.57m x 2.29m)

Featuring ceiling light point, double glazed window, wall - mounted radiator, power point. Fitted with carpet flooring.

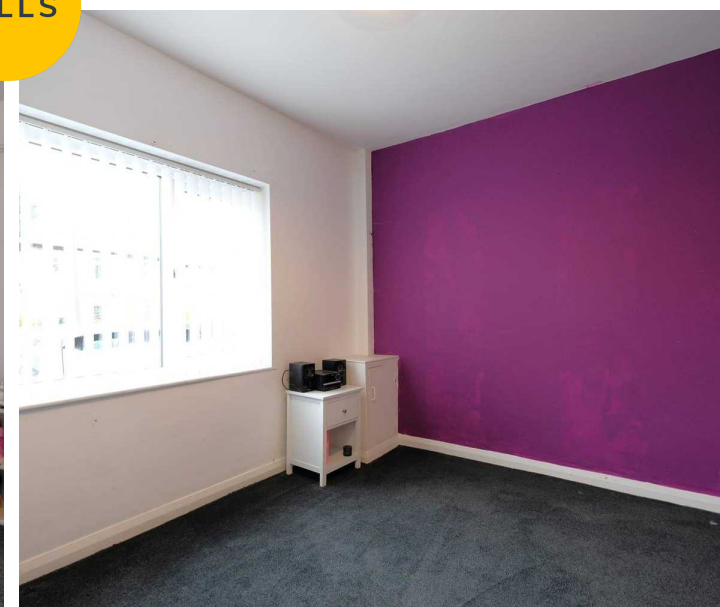
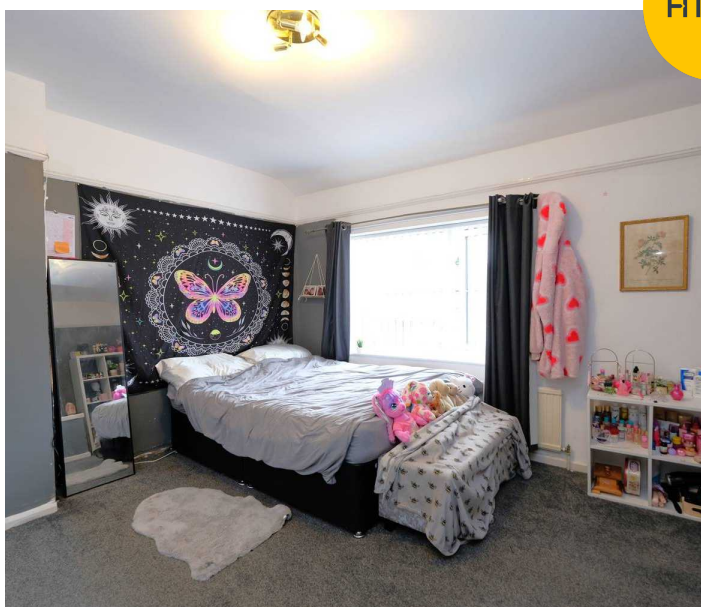
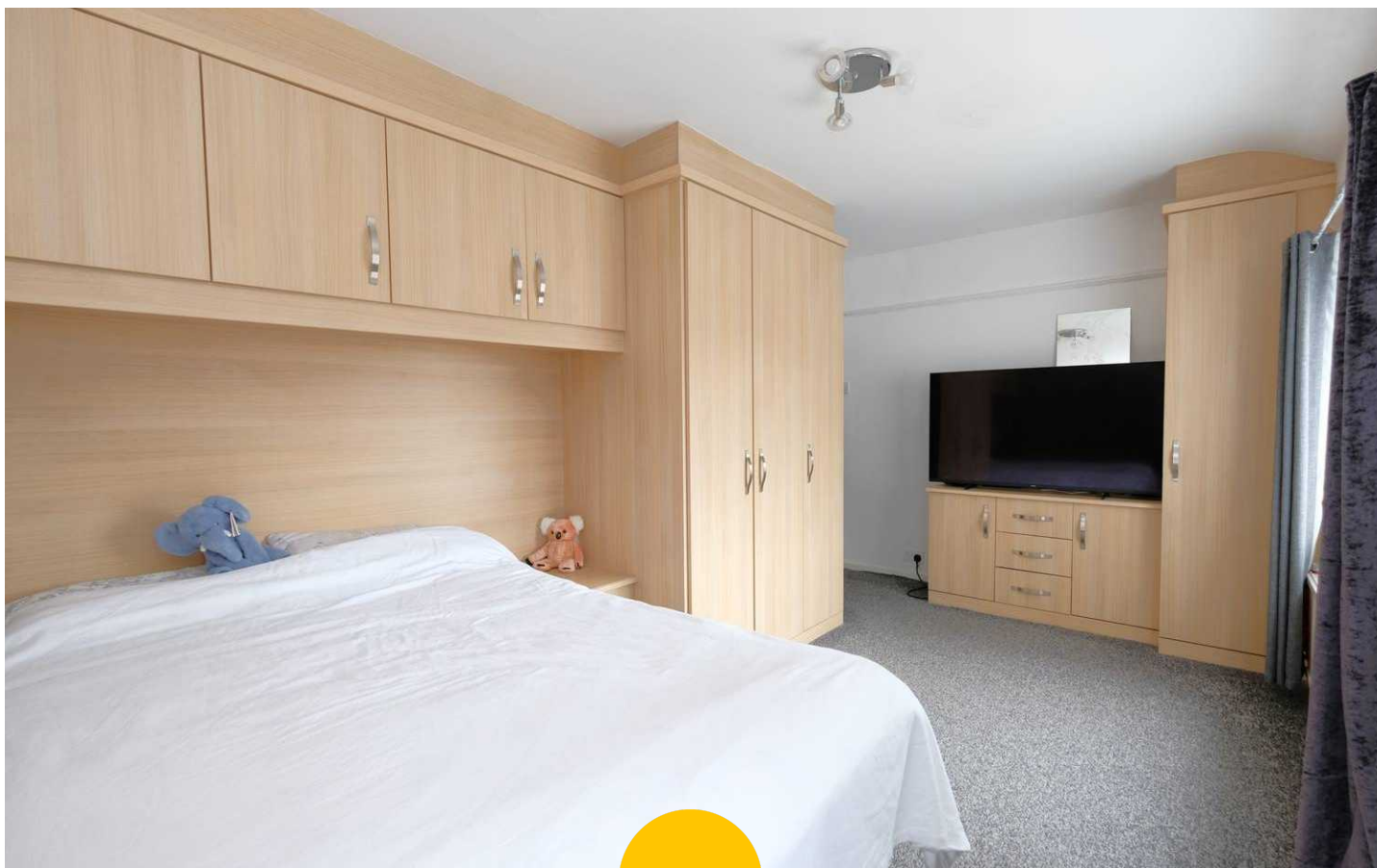
Bathroom

6' 0" x 5' 9" (1.83m x 1.75m)

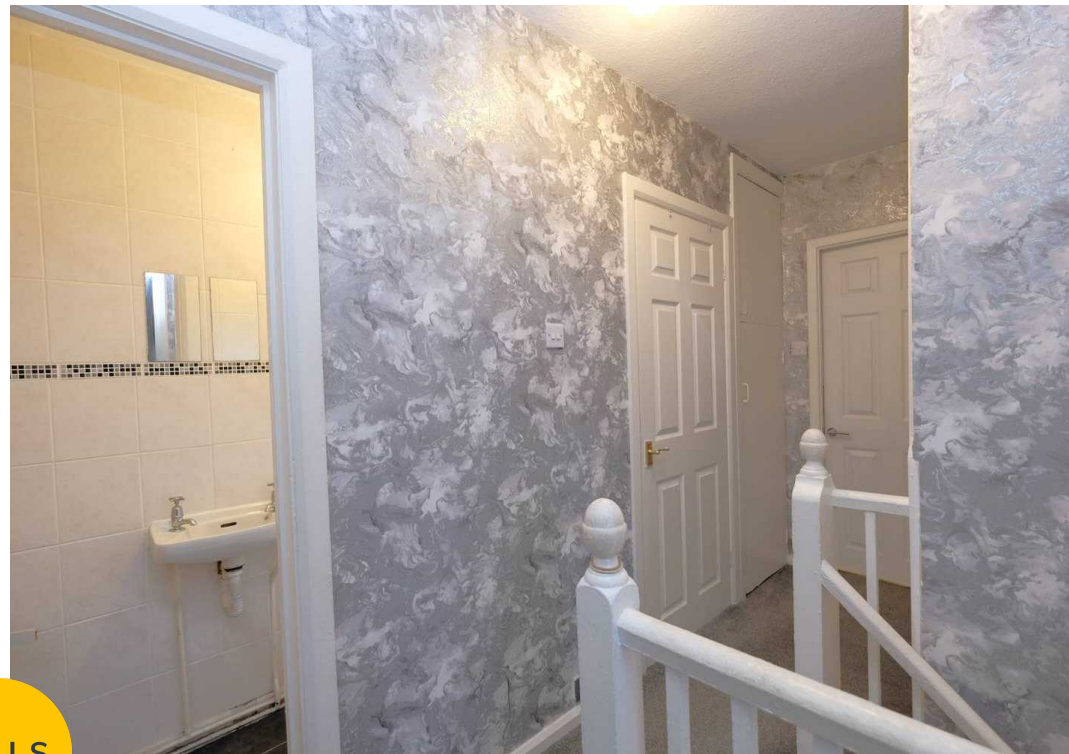
Featuring two piece suite including hand wash basin, electric shower over bath tub. Complete with ceiling light point, double glazed window. Fitted with tiled walls and flooring.

External

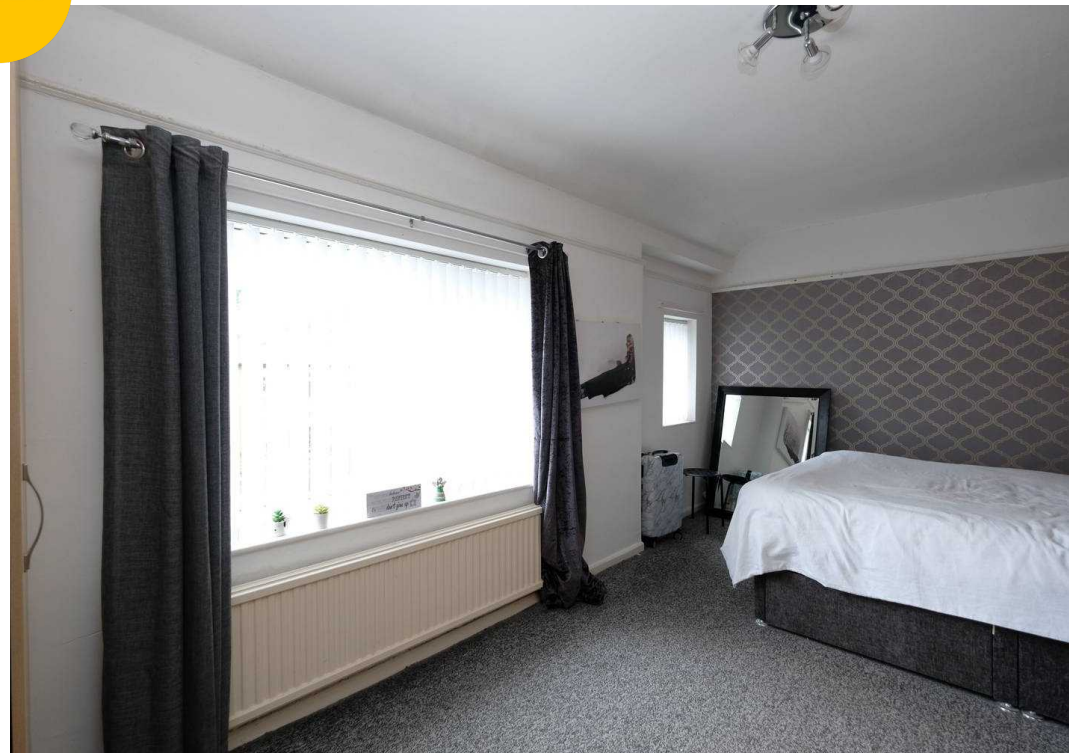
To the front of the property is a paved gated off road parking for multiple cars. To the rear of the property is a paved patio, lawned fenced enclosed garden, and a metal shed.

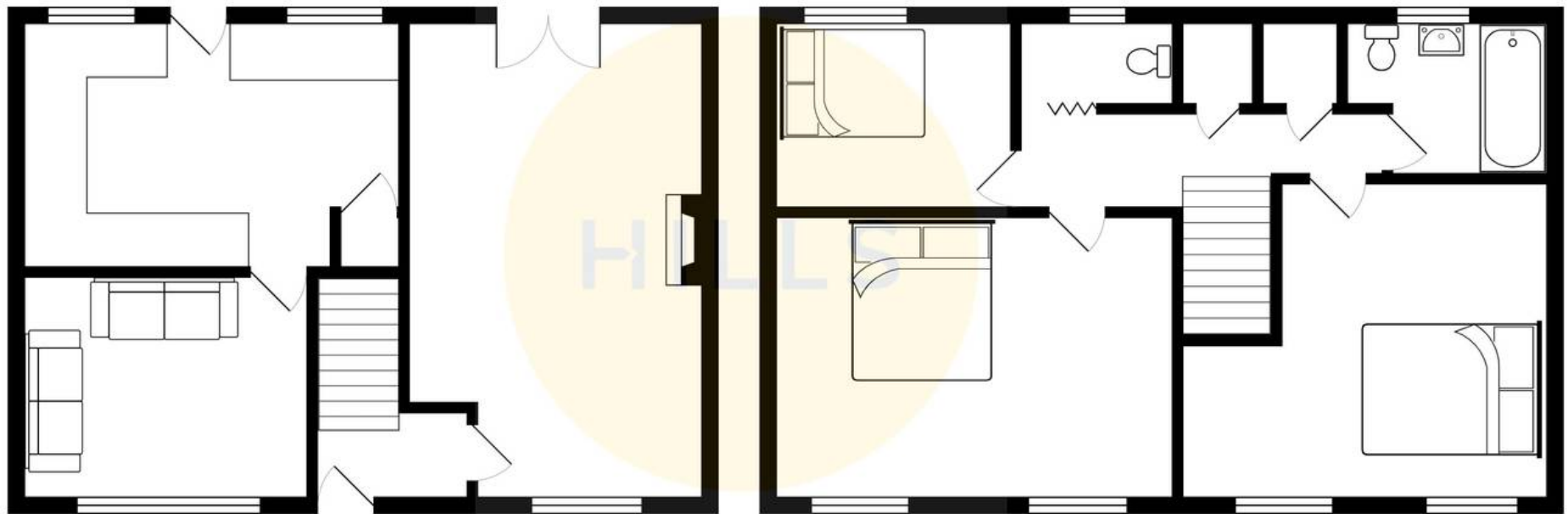


HILLS



HILLS







Hills | Salfords Estate Agent

Hills Residential, Sentinel House Albert Street - M30 0SS

0161 707 4900

sales@hills.agency

www.hills.agency/



THE PROPERTY MISDESCRIPTIONS ACT 1991 The Agent has not tested any apparatus, equipment, fixtures and fittings or services and so cannot verify that they are in working order or fit for the purpose. A Buyer is advised to obtain verification from their Solicitor or Surveyor. References to the Tenure of a Property are based on information supplied by the Seller. The Agent has not had sight of the title documents. A Buyer is advised to obtain verification from their Solicitor. You are advised to check the availability of this property before travelling any distance to view. Every effort and precaution has been made to ensure these particulars are correct and not misleading but their accuracy is not guaranteed nor do they form part of any contract. If there is any point which is of particular importance to you, please contact us and we will provide any information you require. This is advisable, particularly if you intend to travel some distance to view the property. The mention of any appliances and services within these details does not imply that they are in full and efficient working order. These particulars are in draft form awaiting Vendors confirmation of their accuracy. These details must therefore be taken as a guide only.