



Alexandra Road, Eccles

Manchester



Offers Over £260,000

Alexandra Road

Eccles, Manchester

Nestled in sought-after area, this modern three bed semi-detached house offers spacious living, contemporary design, convenient location. Ideal for families & first-time buyers, with versatile reception rooms, modern kitchen, spacious bedrooms, modern shower room, low maintenance gardens, double garage. Close to amenities & transport links. Prime property not to be missed!
Council Tax band: B

Tenure: Leasehold

- Deceptively Spacious Semi Detached Property
- Three Reception Rooms
- Newly Fitted Contemporary Kitchen
- Three Generously Sized Bedrooms
- Modern Shower Room
- Low Maintenance Gardens to the Front & Rear
- Double Garage Benefitting from a New Roof
- Located within Walking Distance to Shops, Parks, Schools
- Well Served by Fantastic Transport Links



Entrance Hallway

Entered via a hardwood front door, featuring ceiling light point, wall - mounted radiator. Fitted with hardwood flooring.

Reception Room One

12' 4" x 10' 9" (3.76m x 3.28m)

A spacious reception room featuring built in alcove storage. Complete with a ceiling light point, double glazed window and wall mounted radiator. Fitted with underlay flooring.

Reception Room Two

14' 8" x 11' 4" (4.47m x 3.45m)

Featuring a gas-capped brick fireplace. Complete with a ceiling light point, double glazed window and wall mounted radiator. Fitted with underlay flooring.

Reception Room Three

11' 4" x 9' 9" (3.45m x 2.97m)

Featuring understairs storage. Complete with a ceiling light point, double glazed window and wall mounted radiator. Fitted with hardwood flooring.

Kitchen

9' 9" x 7' 9" (2.97m x 2.36m)

Featuring modern wall and base units with glass splashback and composite sink. Integral electric oven and grill. Space for a washer and fridge freezer. Complete with a ceiling light point, double glazed window and composite door. Fitted with tiled flooring.

Landing

Complete with a ceiling light point.

Bedroom One

14' 8" x 12' 5" (4.47m x 3.78m)

Complete with a ceiling light point, two double glazed windows and wall mounted radiator. Fitted with hardwood flooring.



Bedroom Two

12' 8" x 9' 3" (3.86m x 2.82m)

Complete with a ceiling light point, double glazed window and wall mounted radiator. Fitted with hardwood flooring.

Bedroom Three

9' 9" x 7' 8" (2.97m x 2.34m)

Featuring a boiler/storage cupboard. Complete with a ceiling light point, double glazed window and wall mounted radiator. Fitted with hardwood flooring.

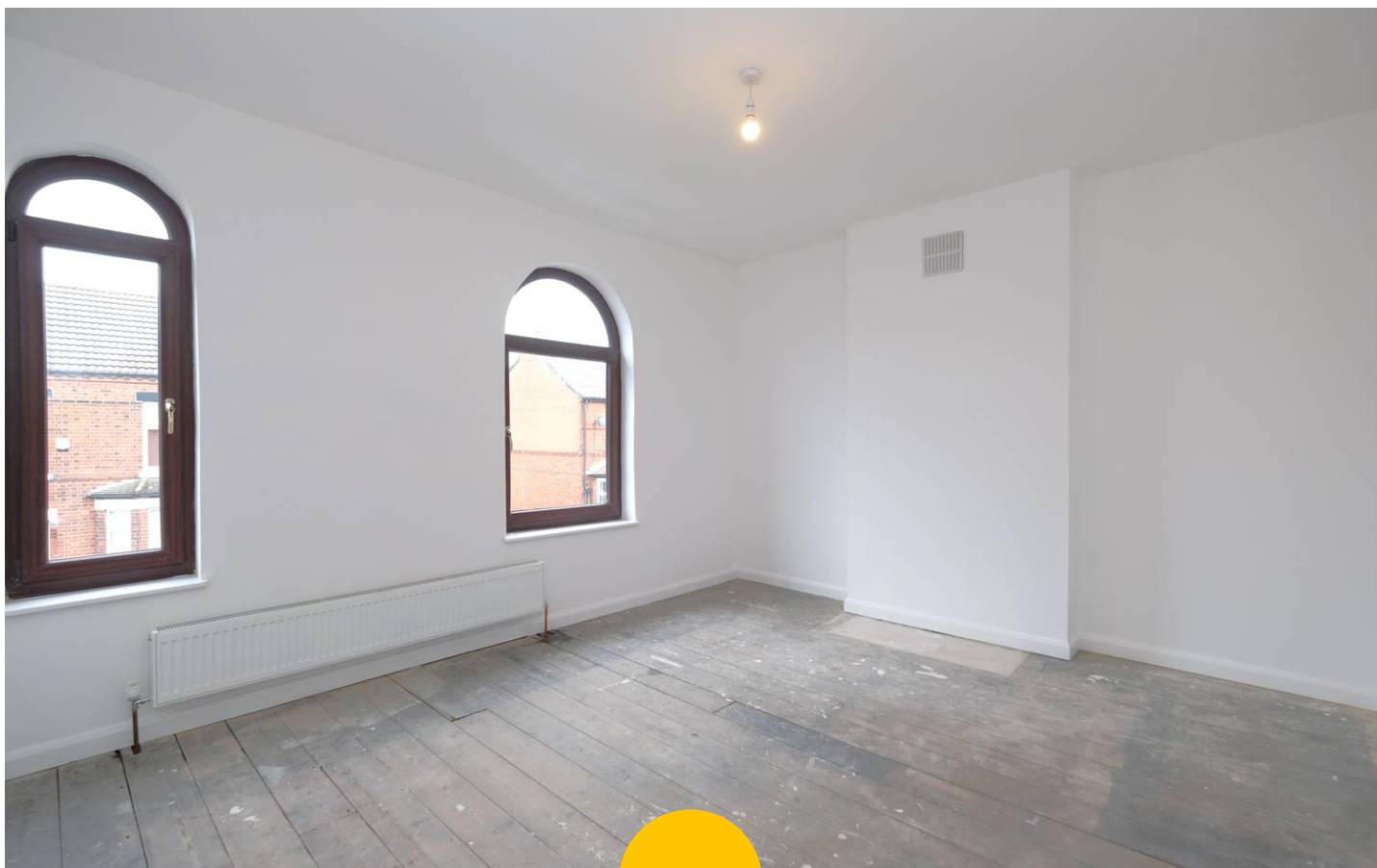
Shower Room

13' 2" x 7' 1" (4.01m x 2.16m)

Featuring a three-piece suite including a shower cubicle, vanity unit with hand wash basin and W.C. Complete with ceiling spotlights, two double glazed windows and heated towel rail. Fitted with lino flooring.

External

Featuring a double detached garage with new roof, front and rear access. To the rear of the property is a well kept lawn with paved patio, gated access to the front and rear.



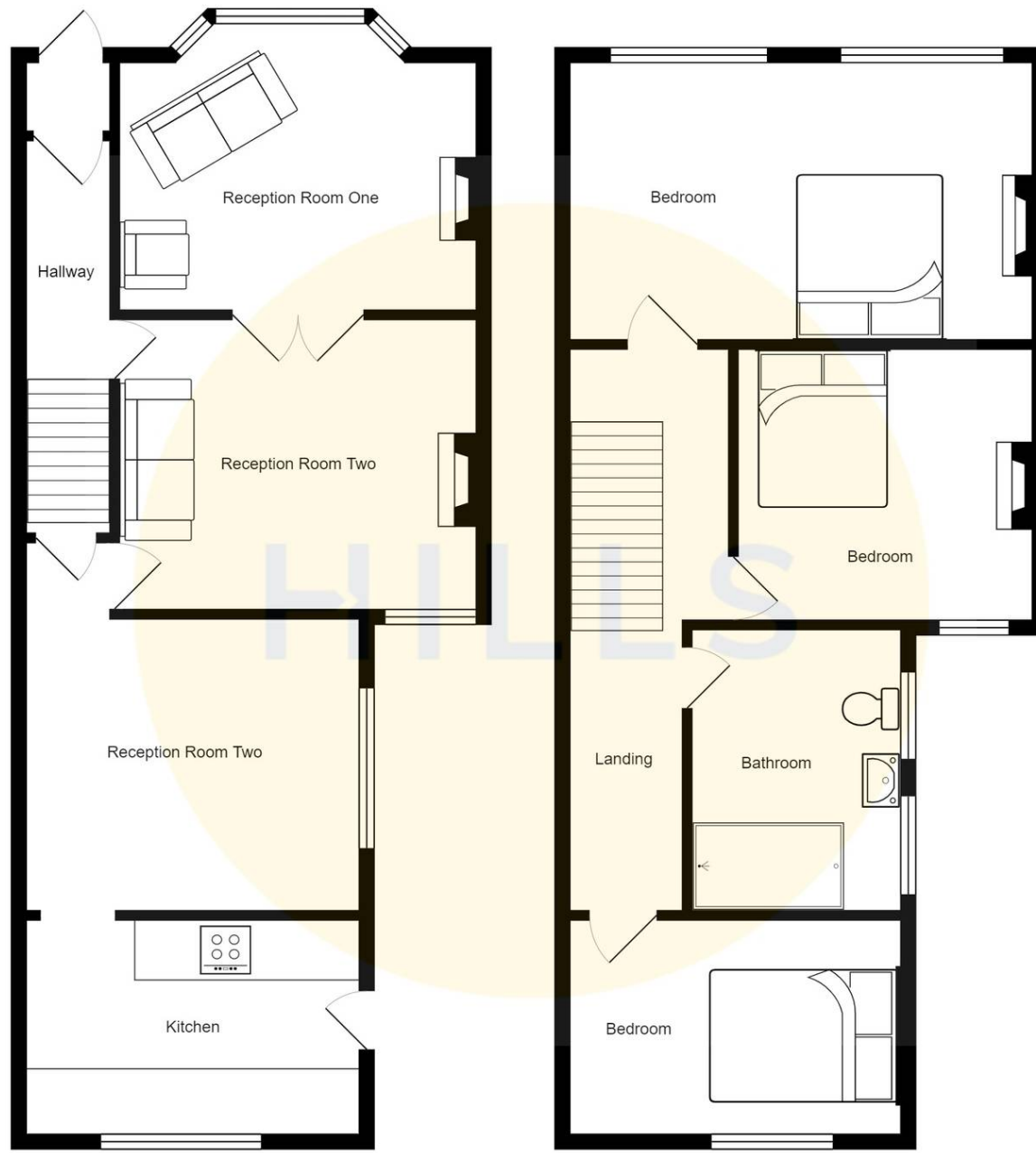
HILLS





HILLS







Hills | Salfords Estate Agent

Hills Residential, Sentinel House Albert Street - M30 0SS

0161 707 4900

sales@hills.agency

www.hills.agency/



THE PROPERTY MISEDDESCRIPTIONS ACT 1991 The Agent has not tested any apparatus, equipment, fixtures and fittings or services and so cannot verify that they are in working order or fit for the purpose. A Buyer is advised to obtain verification from their Solicitor or Surveyor. References to the Tenure of a Property are based on information supplied by the Seller. The Agent has not had sight of the title documents. A Buyer is advised to obtain verification from their Solicitor. You are advised to check the availability of this property before travelling any distance to view. Every effort and precaution has been made to ensure these particulars are correct and not misleading but their accuracy is not guaranteed nor do they form part of any contract. If there is any point which is of particular importance to you, please contact us and we will provide any information you require. This is advisable, particularly if you intend to travel some distance to view the property. The mention of any appliances and services within these details does not imply that they are in full and efficient working order. These particulars are in draft form awaiting Vendors confirmation of their accuracy. These details must therefore be taken as a guide only.