

Brentwood, Salford

Salford



In Excess of £210,000

28 Brentwood

Salford, Salford

Just a Stone's Throw from Buile Hill Park STOP! Take a look at this stylish, three bedroom family home that is a credit to its current owner, featuring a contemporary kitchen diner, along with gardens to the front and rear!

Tenure: Leasehold

- Stylish Three Bedroom Family Home
- Tastefully Decorated Throughout to a High Standard
- Just a Stone's Throw from Buile Hill Park
- Bay-Fronted Lounge and a Contemporary Kitchen Diner, With Patio Doors Letting Plenty of Natural Light in
- Modern Three-Piece Family Bathroom Installed Within the Last Two Years
- Laid-to-Lawn Grass Garden to the Front, and a Low-Maintenance Paved Garden to the Rear Complete with Planted Borders
- Close to Excellent Transport Links into Salford Quays, Media City and Manchester City Centre
- Ideal First Time Home or Investment Viewing is Highly Recommended!



Lounge

Dimensions: 13' 11" x 13' 0" (4.251m x 3.969m). Double glazed bay window, ceiling light point, wall mounted radiator and wooden effect flooring.

Kitchen/Diner

Dimensions: 16' 3" x 8' 6" (4.946m x 2.579m). A range of wall and base units with complementary work top surfaces with an integral sink and drainer. Integrated oven and hob. Space for washing machine and fridge freezer. Under stairs storage cupboard, two ceiling light points and spot lights, and patio doors to the rear.

Bedroom One

Dimensions: 12' 1" x 8' 7" (3.691m x 2.625m). Double glazed window to the rear, ceiling light, wall mounted radiator and laminate floor.

Bedroom Two

Dimensions: 13' 4" x 9' 5" (4.055m x 2.870m). Double glazed window to the front, ceiling light point, wall mounted radiator and carpeted floor.

Bedroom Three

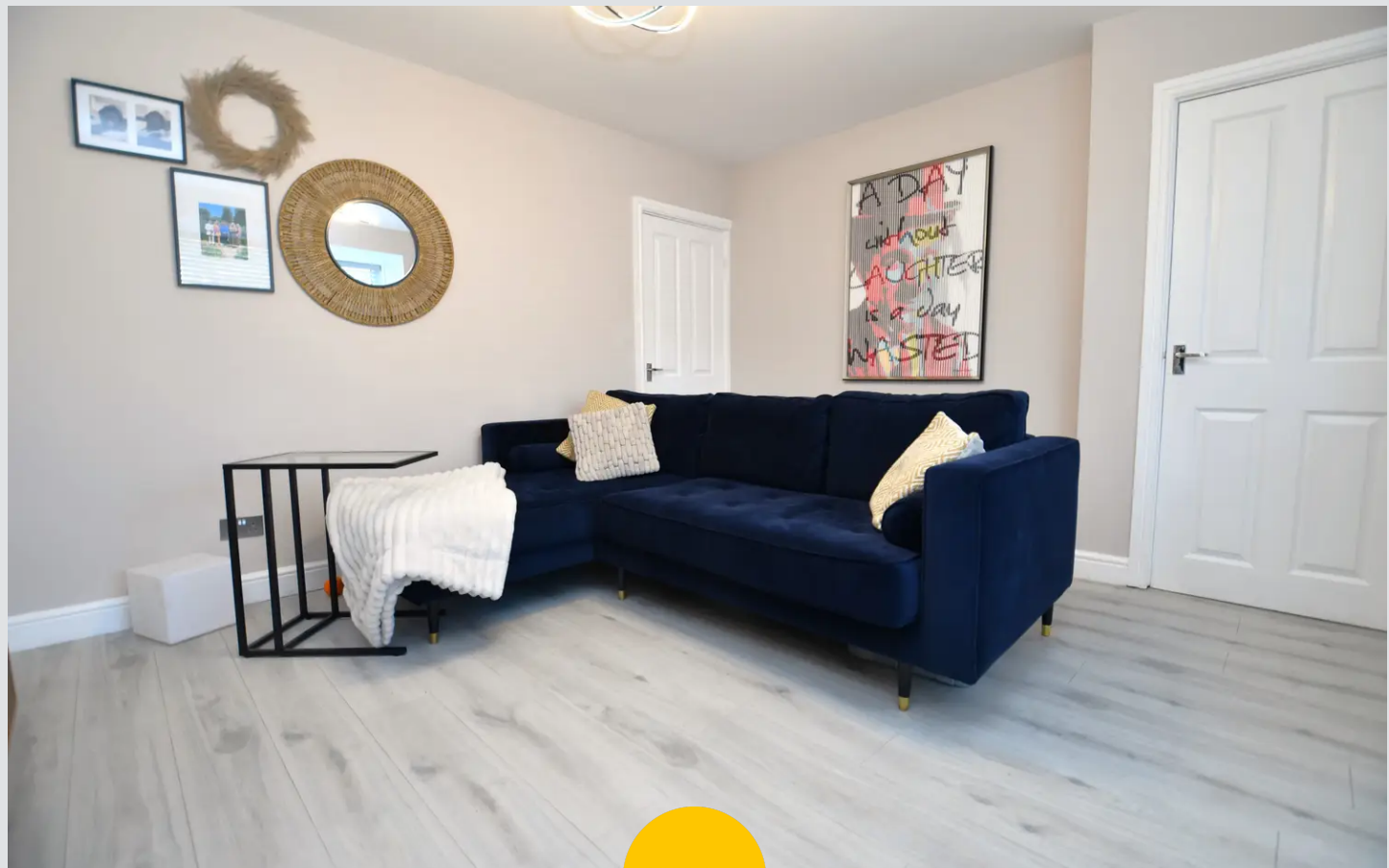
Dimensions: 8' 10" x 8' 10" (2.689m x 2.689m). Double glazed window to the rear, ceiling light point, wall mounted radiator and carpeted floor.

Bathroom

Dimensions: 5' 11" x 5' 5" (1.806m x 1.645m). Double glazed window to the rear, three-piece bathroom with a shower over the bath, low level WC and pedestal wash basin. Tiled floor and walls

Externally

Externally to the rear the property comes complete with a patio area and lawned area whilst to the front there is a spacious garden with a lawned area.



Lounge

Dimensions: 13' 11" x 13' 0" (4.251m x 3.969m). Double glazed bay window, ceiling light point, wall mounted radiator and wooden effect flooring.

Kitchen/Diner

Dimensions: 16' 3" x 8' 6" (4.946m x 2.579m). A range of wall and base units with complementary work top surfaces with an integral sink and drainer. Integrated oven and hob. Space for washing machine and fridge freezer. Under stairs storage cupboard, two ceiling light points and spot lights, and patio doors to the rear.

Bedroom One

Dimensions: 12' 1" x 8' 7" (3.691m x 2.625m). Double glazed window to the rear, ceiling light, wall mounted radiator and laminate floor.

Bedroom Two

Dimensions: 13' 4" x 9' 5" (4.055m x 2.870m). Double glazed window to the front, ceiling light point, wall mounted radiator and carpeted floor.

Bedroom Three

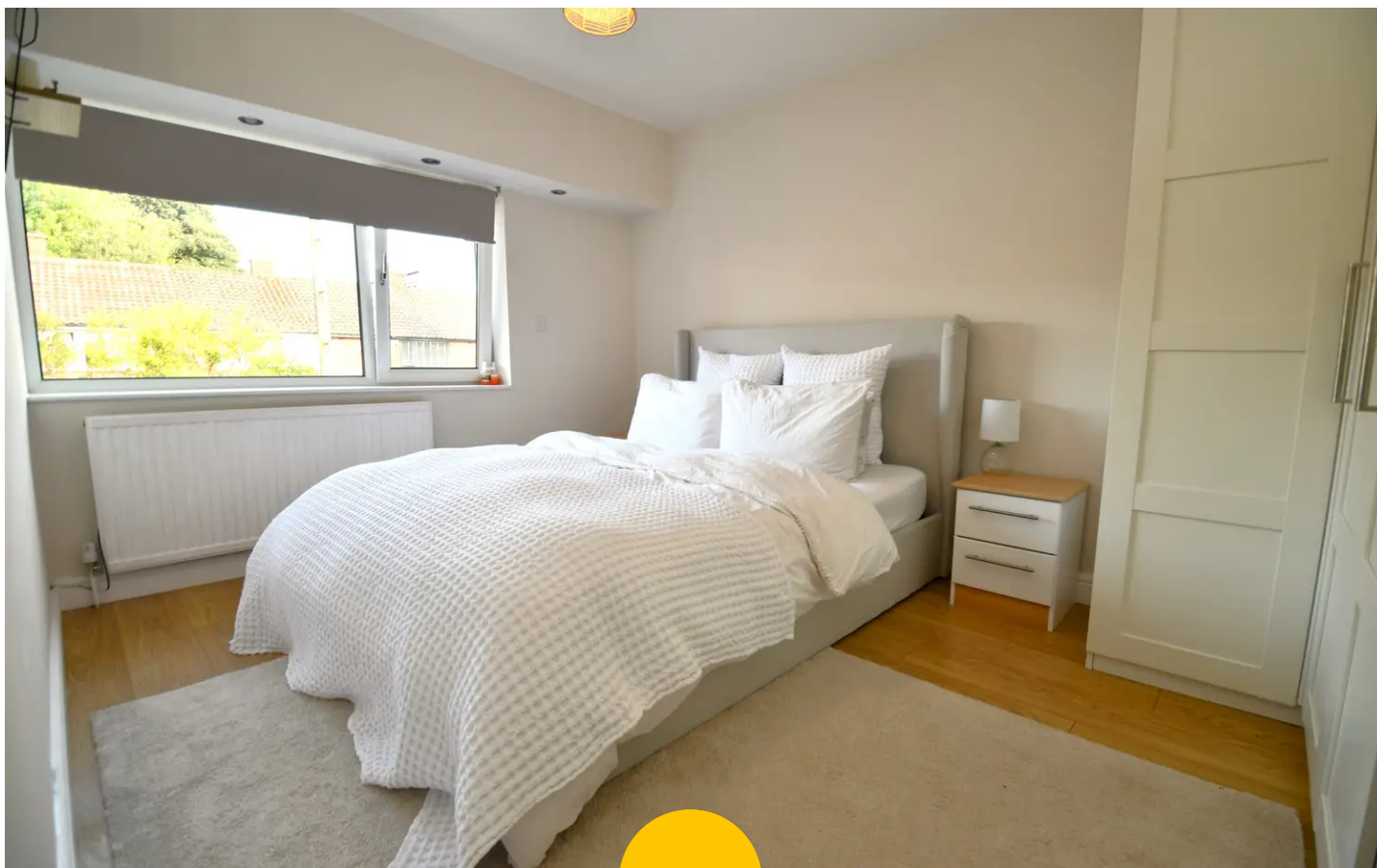
Dimensions: 8' 10" x 8' 10" (2.689m x 2.689m). Double glazed window to the rear, ceiling light point, wall mounted radiator and carpeted floor.

Bathroom

Dimensions: 5' 11" x 5' 5" (1.806m x 1.645m). Double glazed window to the rear, three-piece bathroom with a shower over the bath, low level WC and pedestal wash basin. Tiled floor and walls

Externally

Externally to the rear the property comes complete with a patio area and lawned area whilst to the front there is a spacious garden with a lawned area.



HILLS





Hills | Salfords Estate Agent

Hills Residential, Sentinel House Albert Street - M30 0SS

0161 707 4900

sales@hills.agency

www.hills.agency/



THE PROPERTY MISDESCRIPTIONS ACT 1991 The Agent has not tested any apparatus, equipment, fixtures and fittings or services and so cannot verify that they are in working order or fit for the purpose. A Buyer is advised to obtain verification from their Solicitor or Surveyor. References to the Tenure of a Property are based on information supplied by the Seller. The Agent has not had sight of the title documents. A Buyer is advised to obtain verification from their Solicitor. You are advised to check the availability of this property before travelling any distance to view. Every effort and precaution has been made to ensure these particulars are correct and not misleading but their accuracy is not guaranteed nor do they form part of any contract. If there is any point which is of particular importance to you, please contact us and we will provide any information you require. This is advisable, particularly if you intend to travel some distance to view the property. The mention of any appliances and services within these details does not imply that they are in full and efficient working order. These particulars are in draft form awaiting Vendors confirmation of their accuracy. These details must therefore be taken as a guide only.