



East Drive

Salford



£170,000

# East Drive

Salford

Situated on a lovely corner plot is this THREE BEDROOM, SEMI-DETACHED FAMILY HOME! Benefitting from an abundance of space, with two reception rooms and three generously sized bedrooms! Council Tax band: A

Tenure: Leasehold

- Three Bedroom Semi-Detached Family Home
- Situated on a Lovely Corner Plot
- Spacious Family Lounge and a Dining Room Separated via an Archway
- Fitted Kitchen and a Downstairs W/C
- Three Generously Sized Bedrooms
- Benefits from Beautifully Presented Gardens to the Front, Side and Rear, Complete with Mature Plants, Laid-to-Lawn Grass, Decking and Paving
- Ideal for Someone Looking to Put Their Own Stamp on a Property
- Great First Time Home or Investment
- Viewing is Highly Recommended!



### Entrance Hallway

Complete with a ceiling light point, double glazed window and wall mounted radiator. Fitted with cushioned flooring.

### Lounge

13' 3" x 12' 8" (4.04m x 3.85m)

Complete with a ceiling light point, double glazed window and wall mounted radiator. Fitted with carpet flooring.

### Dining Room

10' 4" x 9' 0" (3.14m x 2.75m)

Complete with a ceiling light point, wall mounted radiator and patio doors. Fitted with carpet flooring.

### Kitchen

10' 1" x 9' 7" (3.08m x 2.93m)

Featuring a range of complementary fitted units with integral hob and oven. Space for a washing machine. Complete with a ceiling light point, double glazed window and wall mounted radiator. Fitted with tiled flooring.

### Landing

Complete with a ceiling light point, double glazed window and carpet flooring.

### Bedroom One

13' 3" x 11' 1" (4.04m x 3.39m)

Featuring fitted furniture. Complete with a ceiling light point, double glazed window and wall mounted radiator. Fitted with carpet flooring.

### Storage Cupboard

3' 9" x 1' 7" (1.15m x 0.47m)

### Bedroom Two

11' 2" x 10' 3" (3.41m x 3.13m)

Complete with a ceiling light point, double glazed window and wall mounted radiator. Fitted with carpet flooring.



HILLS



**Storage Cupboard**

3' 9" x 1' 9" (1.14m x 0.53m)

Complete with a ceiling light point, double glazed window and wall mounted radiator. Fitted with carpet flooring.

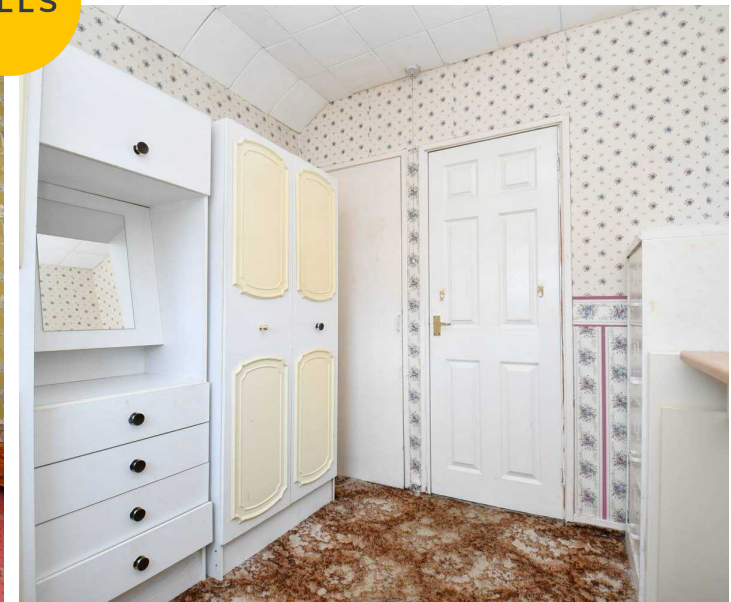
**Bedroom Three**

8' 4" x 8' 2" (2.53m x 2.50m)

Complete with a ceiling light point, double glazed window and wall mounted radiator. Fitted with carpet flooring.

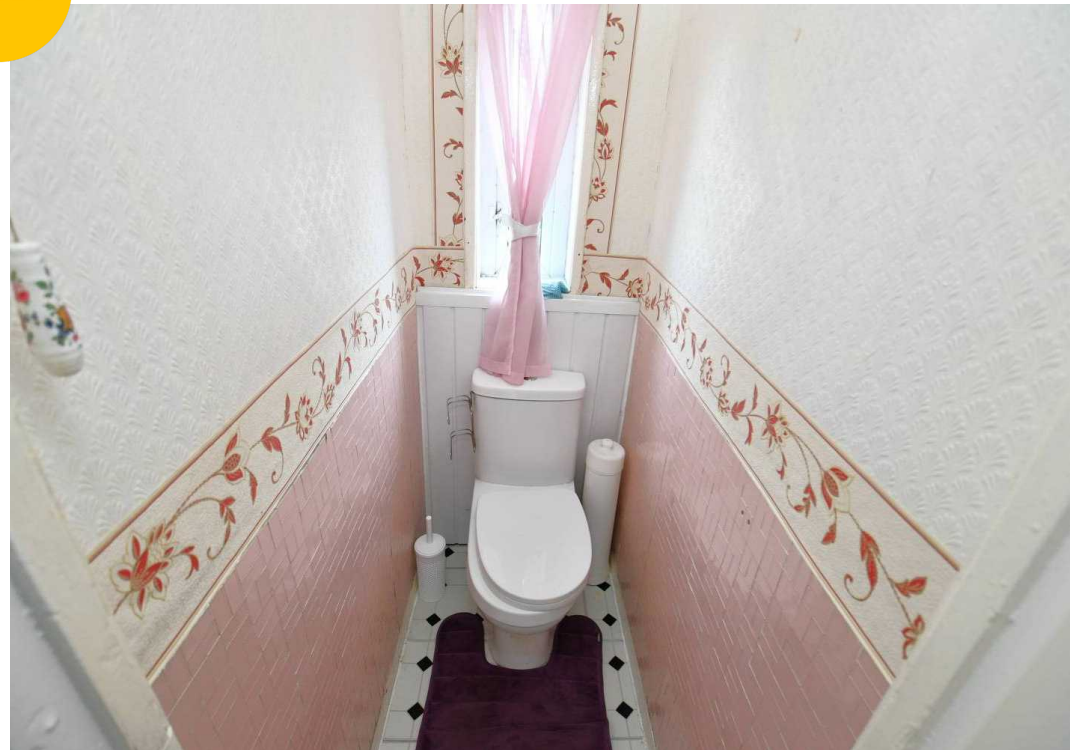
**External**

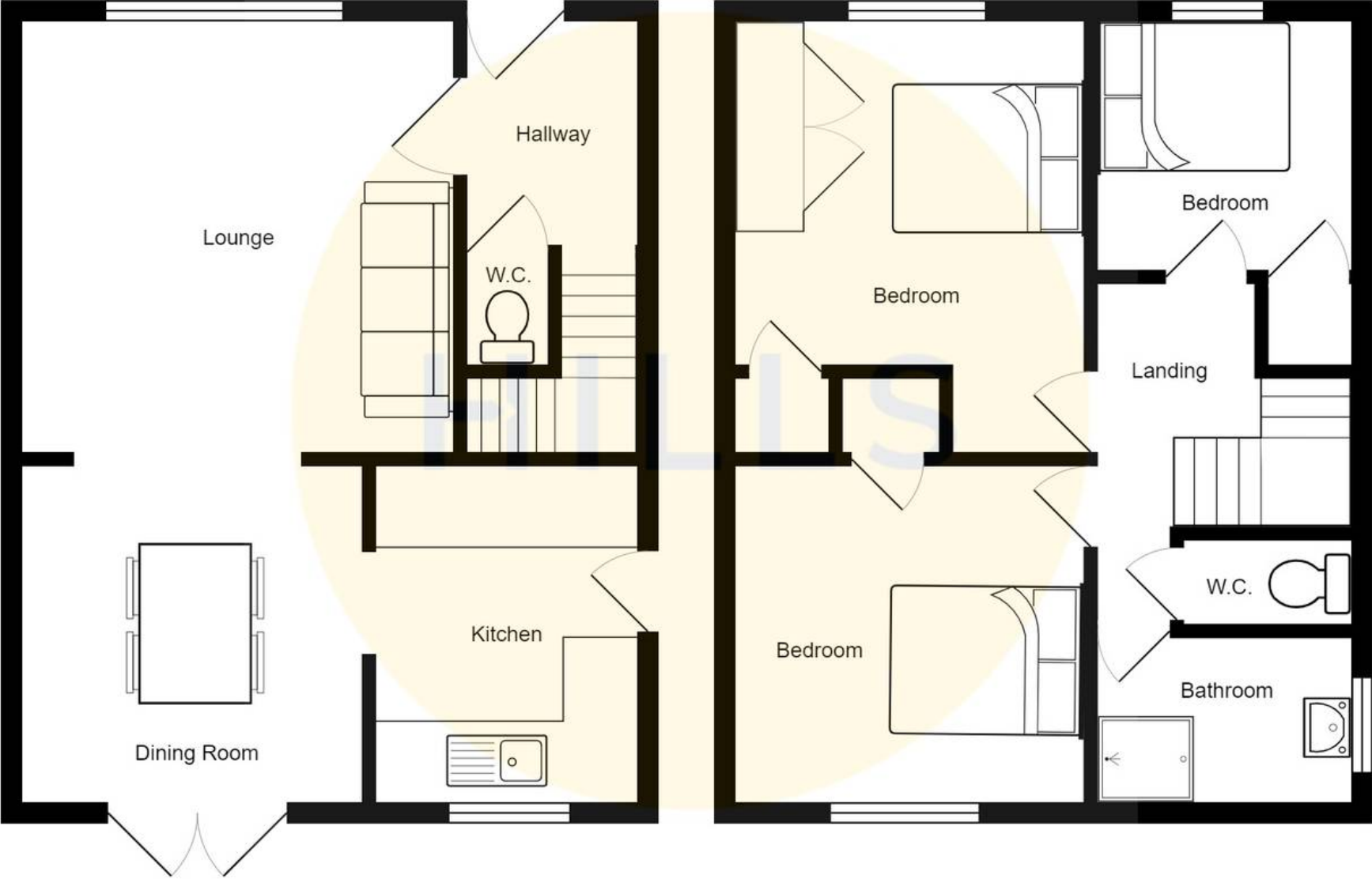
To the front, side and rear of the property are gardens with laid to lawn grass including decking and paving.





HILLS







## Hills | Salfords Estate Agent

Hills Residential, Sentinel House Albert Street - M30 0SS

0161 707 4900

[sales@hills.agency](mailto:sales@hills.agency)

[www.hills.agency/](http://www.hills.agency/)



THE PROPERTY MISDESCRIPTIONS ACT 1991 The Agent has not tested any apparatus, equipment, fixtures and fittings or services and so cannot verify that they are in working order or fit for the purpose. A Buyer is advised to obtain verification from their Solicitor or Surveyor. References to the Tenure of a Property are based on information supplied by the Seller. The Agent has not had sight of the title documents. A Buyer is advised to obtain verification from their Solicitor. You are advised to check the availability of this property before travelling any distance to view. Every effort and precaution has been made to ensure these particulars are correct and not misleading but their accuracy is not guaranteed nor do they form part of any contract. If there is any point which is of particular importance to you, please contact us and we will provide any information you require. This is advisable, particularly if you intend to travel some distance to view the property. The mention of any appliances and services within these details does not imply that they are in full and efficient working order. These particulars are in draft form awaiting Vendors confirmation of their accuracy. These details must therefore be taken as a guide only.