



Princes Court Hawthorn Avenue, Eccles

Manchester



In Excess of £130,000



# Princes Court Hawthorn Avenue

Eccles, Manchester

IMMACULATLEY PRESENTED ONE BEDROOM APARTMENT with a SPACIOUS LOUNGE and MODERN FITTED KITCHEN & SHOWER ROOM. Located just off MONTON ROAD close to EXCELLENT AMENITIES & TRANSPORT LINKS.

Council Tax band: B

Tenure: Leasehold

- CHAIN FREE
- IMMACULATLEY PRESENTED THROUGHOUT
- FIRST FLOOR APARTMENT WITH LIFT ACCESS
- SPACIOUS LOUNGE & DINING ROOM
- MODERN FITTED KITCHEN
- GENEROUS BEDROOM WITH FITTED WARDROBES
- MODERN SHOWER ROOM UPDATED IN THE LAST 12 MONTHS
- RESIDENTS PARKING, WELL KEPT COMMUNAL AREAS & GARDENS
- LOCATED JUST OFF MONTON ROAD
- SUITABLE FOR OVER 55's ONLY





### Hall

Ceiling light point, double glazed window, electric radiator, storage and power point.

### Lounge

17' 7" x 11' 2" (5.36m x 3.4m)

Ceiling light point, double glazed windows, electric fire, electric radiator and power point.

### Kitchen

7' 8" x 6' 12" (2.34m x 2.13m)

Fitted with a range of wall and base units with complementary work surfaces and integrated sink and drainer unit. Integral electric oven, electric hob and microwave with space for a fridge freezer. Ceiling light point and power point.

### Bedroom

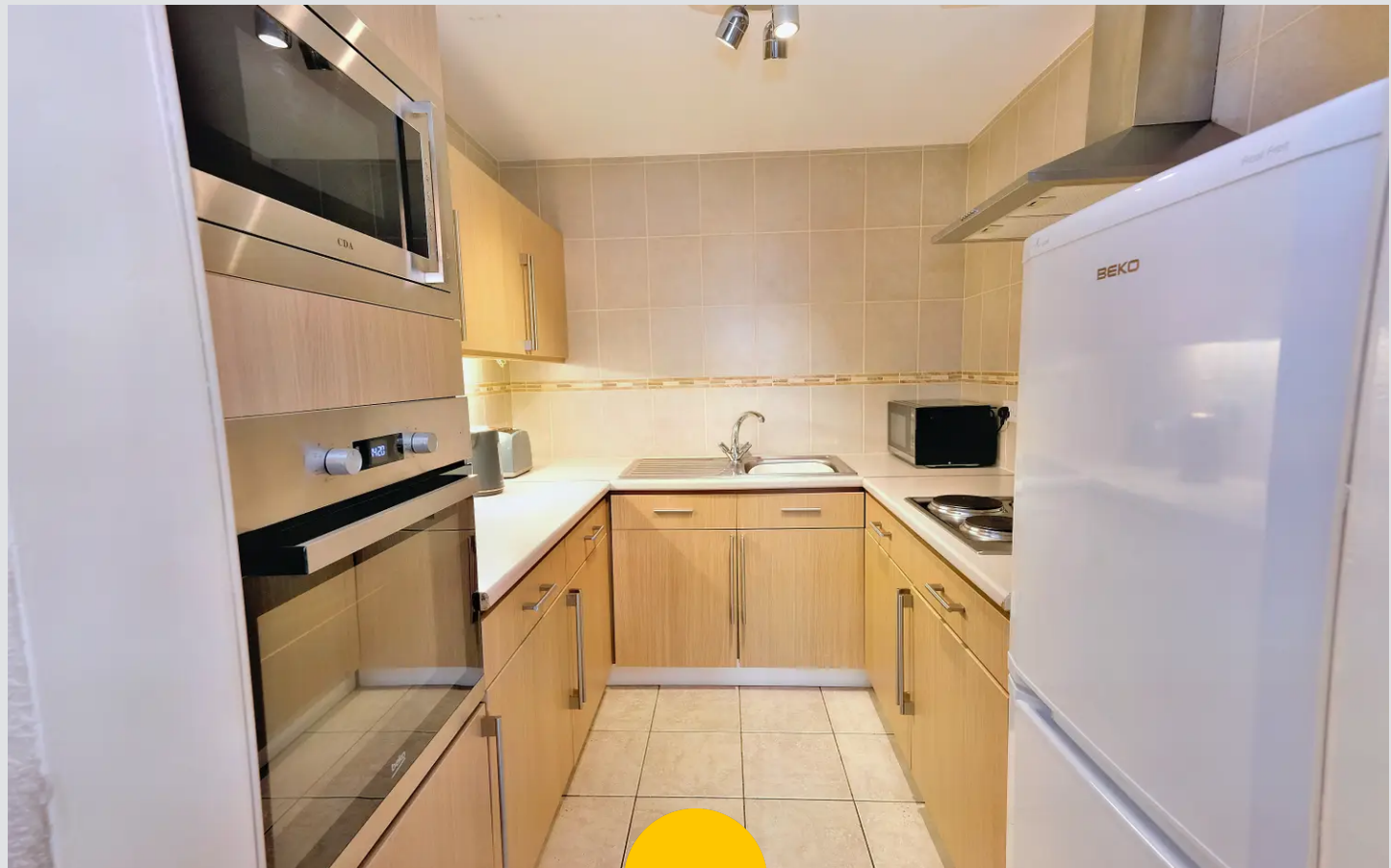
15' 4" x 9' 6" (4.67m x 2.9m)

Ceiling light point, double glazed window, electric radiator, power point and fitted wardrobes.

### Bathroom

8' 1" x 6' 2" (2.46m x 1.88m)

Fitted with a three piece suite including a hand wash basin, WC and electric shower. Ceiling spotlights and electric radiator.



HILLS









## Hills | Salfords Estate Agent

Hills Residential, Sentinel House Albert Street – M30 0SS

0161 707 4900

[sales@hills.agency](mailto:sales@hills.agency)

[www.hills.agency/](http://www.hills.agency/)



THE PROPERTY MISDESCRIPTIONS ACT 1991 The Agent has not tested any apparatus, equipment, fixtures and fittings or services and so cannot verify that they are in working order or fit for the purpose. A Buyer is advised to obtain verification from their Solicitor or Surveyor. References to the Tenure of a Property are based on information supplied by the Seller. The Agent has not had sight of the title documents. A Buyer is advised to obtain verification from their Solicitor. You are advised to check the availability of this property before travelling any distance to view. Every effort and precaution has been made to ensure these particulars are correct and not misleading but their accuracy is not guaranteed nor do they form part of any contract. If there is any point which is of particular importance to you, please contact us and we will provide any information you require. This is advisable, particularly if you intend to travel some distance to view the property. The mention of any appliances and services within these details does not imply that they are in full and efficient working order. These particulars are in draft form awaiting Vendors confirmation of their accuracy. These details must therefore be taken as a guide only.