

Hereford Road, Eccles

Manchester



In Excess of £250,000

Hereford Road

Eccles, Manchester

Ideally located in Ellesmere Park, this spacious family home features bay fronted lounge, dining room, conservatory, fitted kitchen, three double bedrooms, wet room, off-road parking, south-facing garden, close to amenities and transport links. Ideal for family living.

Council Tax band: B

Tenure: Freehold

- Fantastic Family Home, Occupying a Generous Corner Plot in the Desirable Ellesmere Park
- Fitted Kitchen & Modern Wet Room
- Down Stairs W.C. and Separate Utility Room
- Three Generous Double Bedrooms
- Off Road Parking
- Open Plan Bay Fronted Lounge/ Dining Room & Conservatory
- Surrounded by Excellent Local Amenities & Brilliant Transport Links
- Beautifully Kept Gardens to the Front & South Facing Rear



HILLS

Entrance Hallway

Dimensions: 8' 4" x 11' 3" (2.54m x 3.43m). Entered via a uPVC door. Complete with a ceiling light point, wall mounted radiator and laminate flooring.

Lounge

Dimensions: 27' 4" x 13' 2" (8.32m x 4.01m). A spacious lounge complete with two ceiling light points, double glazed bay window, two wall mounted radiators and laminate flooring.

Kitchen

Dimensions: 9' 2" x 8' 5" (2.79m x 2.56m). A range of wall and base units with complementary work top surfaces, including a sink and drainer unit and space for a range cooker and fridge/freezer. Complete with a ceiling light point, double glazed window and laminate flooring.

Utility room

Dimensions: 7' 7" x 6' 0" (2.31m x 1.83m). Complete with a double glazed window and laminate flooring.

Downstairs WC

Dimensions: 5' 9" x 2' 6" (1.75m x 0.76m). A low level WC, double glazed window, ceiling light point and laminate flooring.

Conservatory

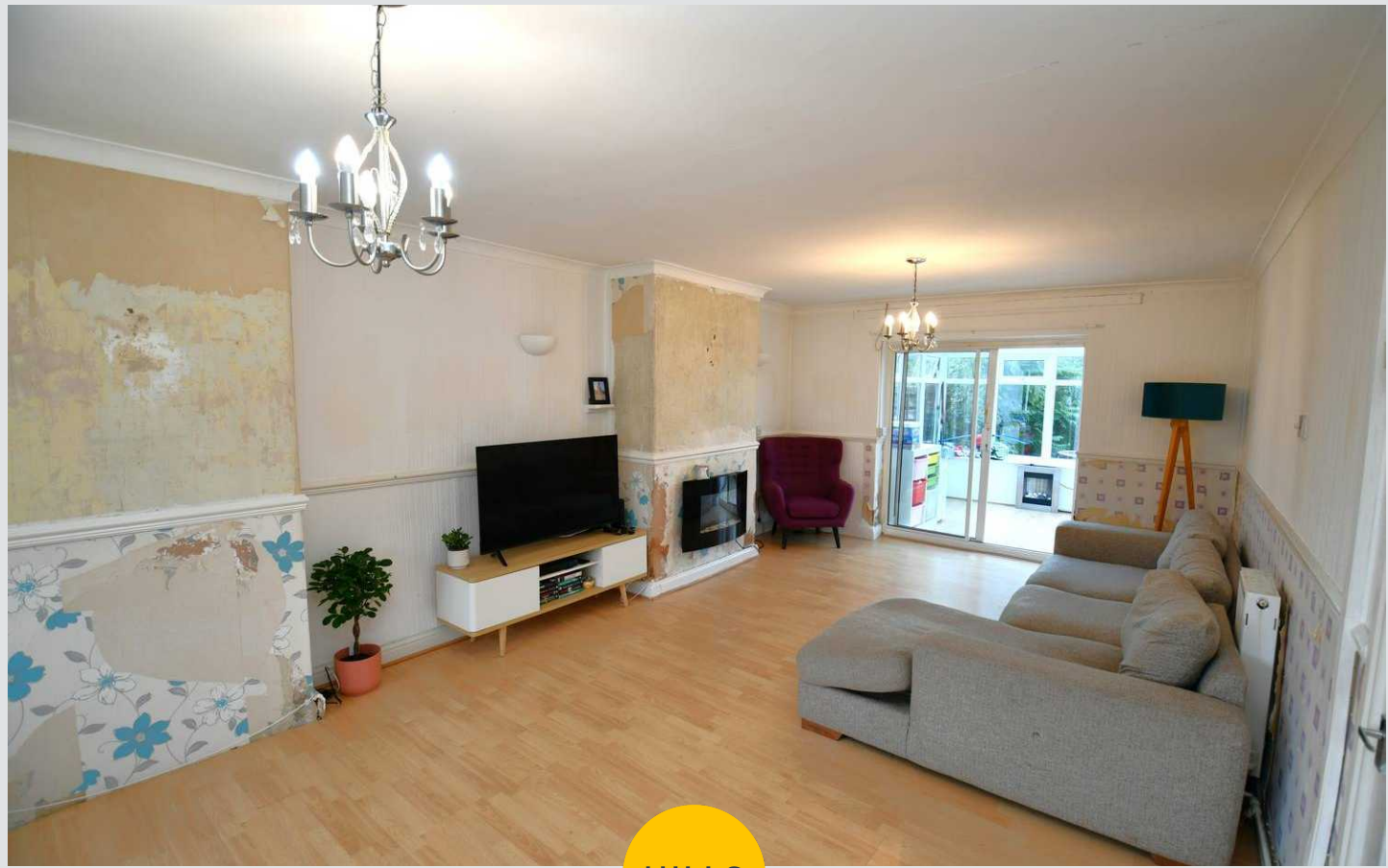
Dimensions: 9' 7" x 9' 3" (2.92m x 2.82m). Complete with a ceiling light point, double glazed patio doors leading to the garden alongside double glazed windows to the side and rear. Fitted with a wall mounted radiator and laminate flooring.

Landing

Complete with a ceiling light point and carpet flooring.

Bedroom One

Dimensions: 12' 5" x 12' 4" (3.78m x 3.76m). Complete with a ceiling light point, double glazed window, wall mounted radiator and carpet flooring.



Bedroom Two

Dimensions: 12' 6" x 9' 9" (3.81m x 2.97m). Complete with a ceiling light point, double glazed window, wall mounted radiator and carpet flooring.

Bedroom Three

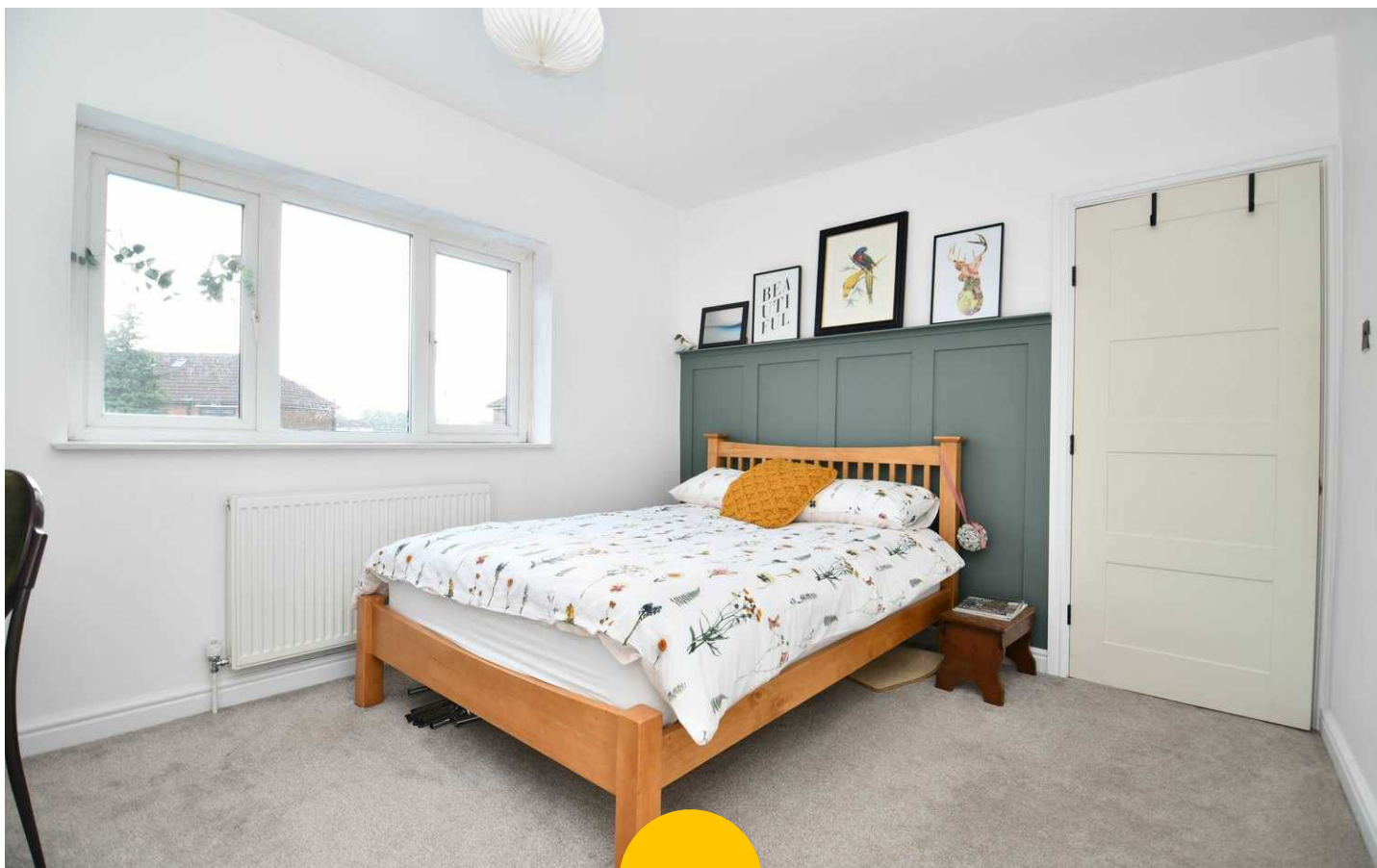
Dimensions: 8' 6" x 9' 3" (2.59m x 2.82m). Complete with a ceiling light point, double glazed window, wall mounted radiator and carpet flooring.

Bathroom

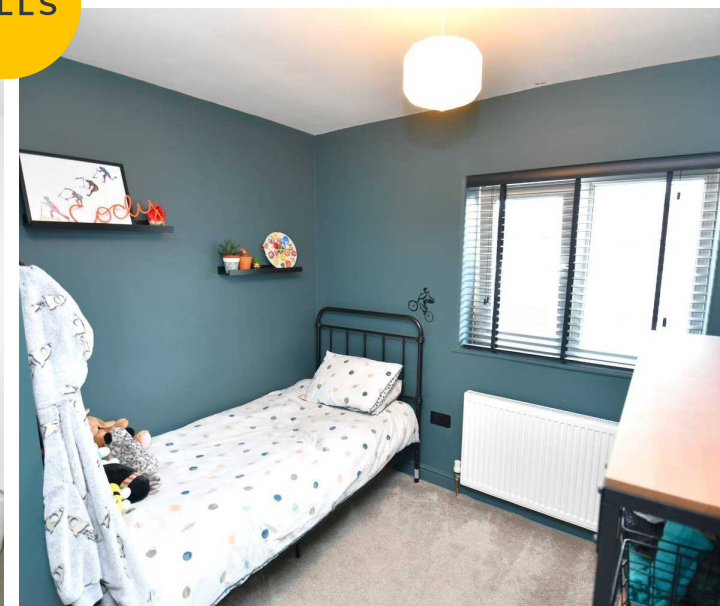
Dimensions: 8' 5" x 5' 7" (2.56m x 1.70m). A wet room comprising of a low level WC and hand wash basin with an open shower. Complete with a ceiling light point, two double glazed windows, wall mounted radiator, tiled walls and flooring.

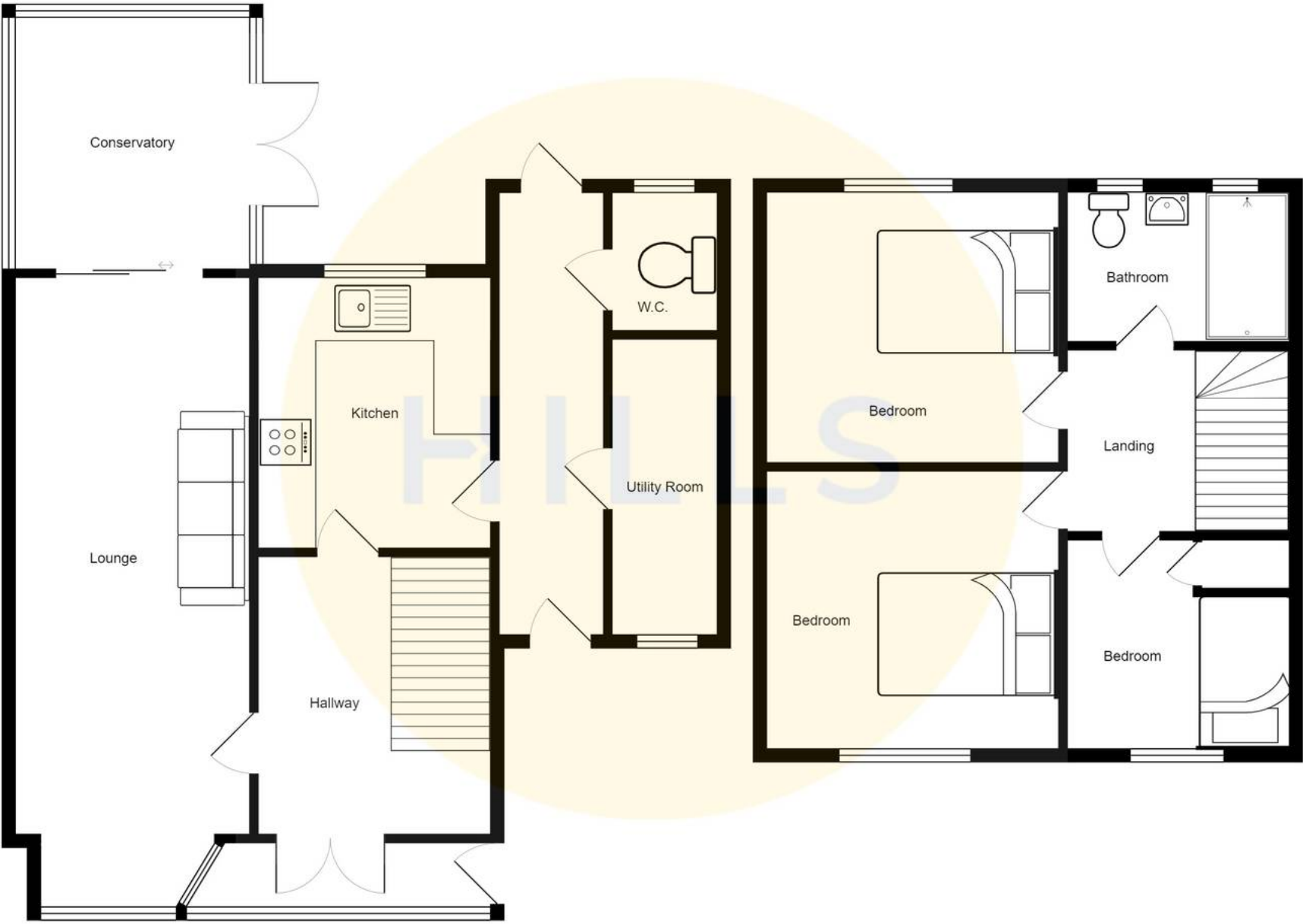
Externally

To the front there is a large well maintained laid to lawn garden complete with a paved driveway for multiple cars. To the rear of the property is a large laid to lawn garden and a patio area which benefits from the sun most of the day.



HILLS







Hills | Salfords Estate Agent

Hills Residential, Sentinel House Albert Street – M30 0SS

0161 707 4900

sales@hills.agency

www.hills.agency/



THE PROPERTY MISDESCRIPTIONS ACT 1991 The Agent has not tested any apparatus, equipment, fixtures and fittings or services and so cannot verify that they are in working order or fit for the purpose. A Buyer is advised to obtain verification from their Solicitor or Surveyor. References to the Tenure of a Property are based on information supplied by the Seller. The Agent has not had sight of the title documents. A Buyer is advised to obtain verification from their Solicitor. You are advised to check the availability of this property before travelling any distance to view. Every effort and precaution has been made to ensure these particulars are correct and not misleading but their accuracy is not guaranteed nor do they form part of any contract. If there is any point which is of particular importance to you, please contact us and we will provide any information you require. This is advisable, particularly if you intend to travel some distance to view the property. The mention of any appliances and services within these details does not imply that they are in full and efficient working order. These particulars are in draft form awaiting Vendors confirmation of their accuracy. These details must therefore be taken as a guide only.