

Block C, Hulme Street

Salford



£290,000

# Block C, Hulme Street

## Salford

This two bedroom ultra-modern apartment is nestled amidst the dynamic surroundings of the vibrant The Crescent in Salford, this sophisticated two bedroom apartment offers a prime residential opportunity for discerning individuals seeking a balanced lifestyle.

Council Tax band: C

Tenure: Leasehold

- Situated In The Vibrant and Rejuvenated Area of Salford Dubbed The Crescent
- A Stones Throw From Salford University
- 10 Minutes Walk To Salford Crescent and Salford Central Railway Stations
- Two Spacious Double Bedrooms Both With Ensuites and Fitted Wardrobes
- Acces To The Swimming Pool, Gym, Cinema Room and 24 Hour Concierge
- A Stylish and Modern Foyer
- Modern Open Plan Kitchen and Living Space With Neutral Decor
- Modern Kitchen With Integrated Appliances
- Thriving Bars, Restaurants and Clubs Are a 6 Minute Walk Away Into The City Centre





### Lounge / Kitchen / Diner

22' 11" x 16' 6" (6.98m x 5.04m)

Featuring modern wall and base units with stainless steel sink and mixer tap. Integral fridge freezer, dishwasher and washing machine. Complete with ceiling spotlights, double glazed window and storage heaters. Lounge fitted with carpet flooring. Kitchen fitted with tiled flooring.

### Storage / Boiler Cupboard

### Bathroom

6' 4" x 6' 11" (1.93m x 2.11m)

Featuring a three-piece suite including bath, hand wash basin and W.C. Complete with ceiling spotlights, tiled walls and flooring.

### Bedroom One

16' 8" x 9' 3" (5.08m x 2.83m)

Complete with ceiling spotlights, floor to ceiling windows, fitted wardrobes and heater. Fitted with carpet flooring.

### En suite

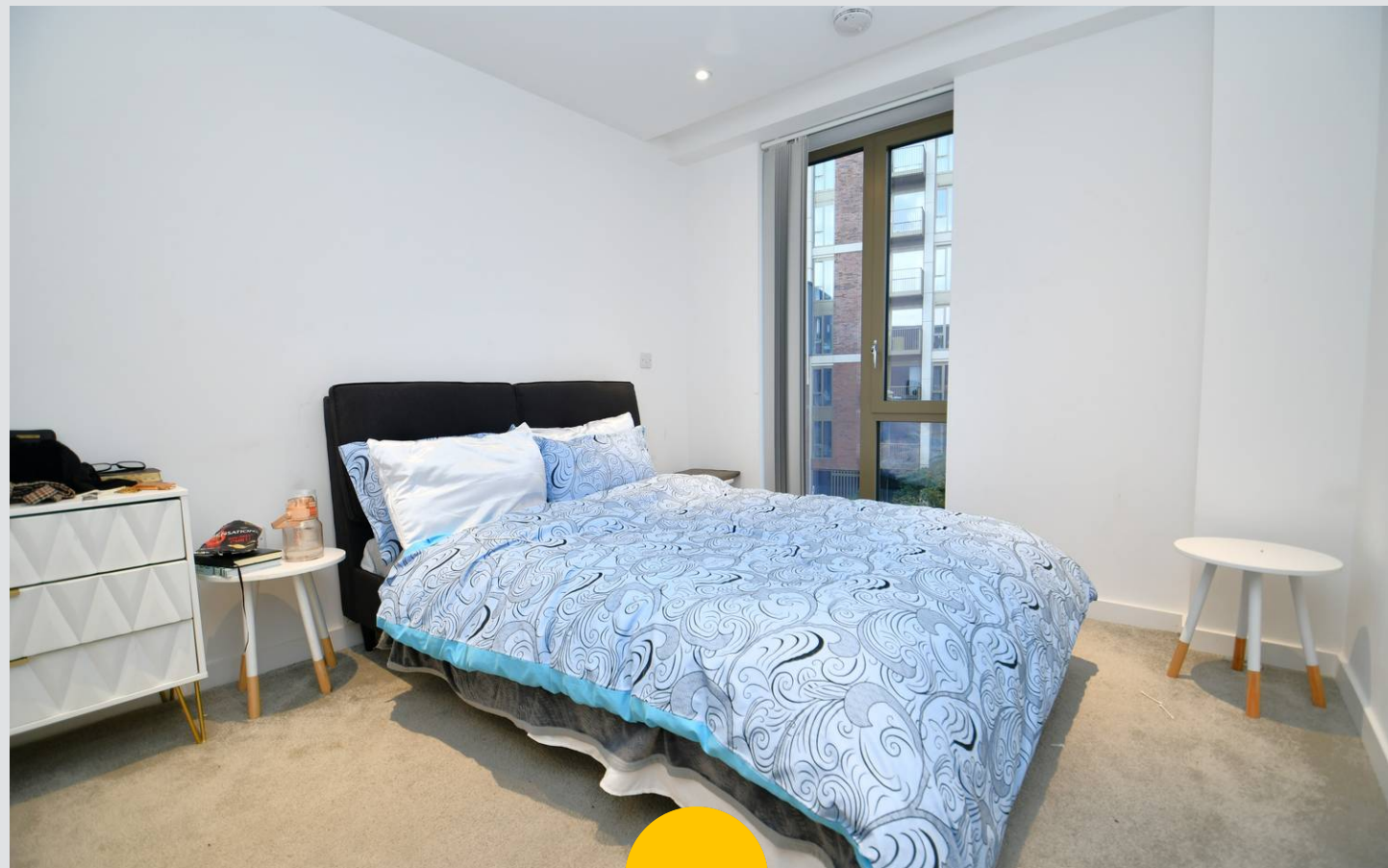
6' 10" x 5' 8" (2.09m x 1.73m)

Featuring a three-piece suite including shower cubicle, hand wash basin and W.C. Complete with ceiling spotlights, tiled walls and flooring.

### Bedroom Two

15' 5" x 9' 8" (4.71m x 2.95m)

Complete with ceiling spotlights, floor to ceiling windows, fitted wardrobes and heater. Fitted with carpet flooring.

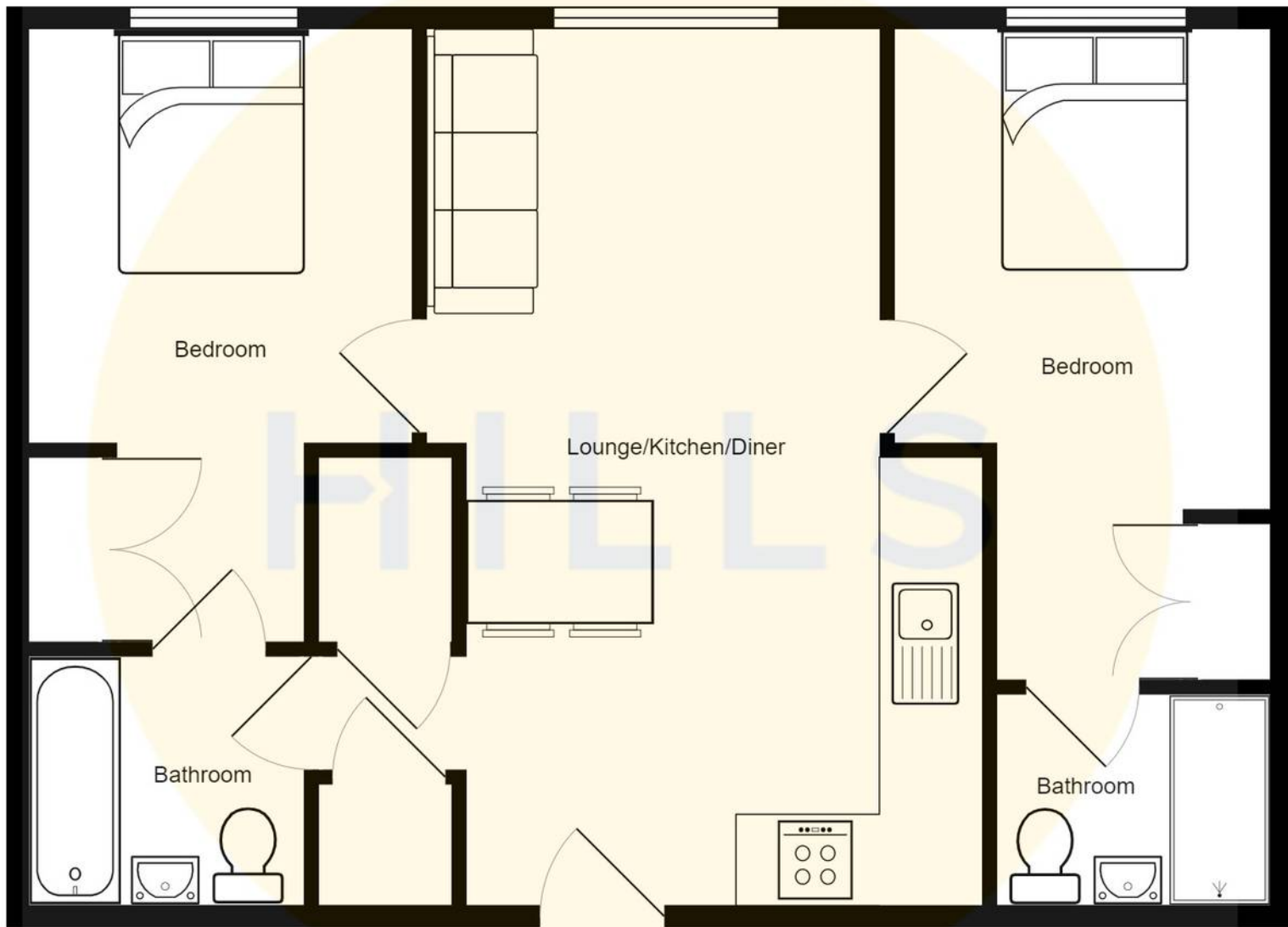




HILLS







Bedroom

Bedroom

Lounge/Kitchen/Diner

Bathroom

Bathroom



## Hills | Salfords Estate Agent

Hills Residential, Sentinel House Albert Street – M30 0SS

0161 707 4900

[sales@hills.agency](mailto:sales@hills.agency)

[www.hills.agency/](http://www.hills.agency/)



THE PROPERTY MISDESCRIPTIONS ACT 1991 The Agent has not tested any apparatus, equipment, fixtures and fittings or services and so cannot verify that they are in working order or fit for the purpose. A Buyer is advised to obtain verification from their Solicitor or Surveyor. References to the Tenure of a Property are based on information supplied by the Seller. The Agent has not had sight of the title documents. A Buyer is advised to obtain verification from their Solicitor. You are advised to check the availability of this property before travelling any distance to view. Every effort and precaution has been made to ensure these particulars are correct and not misleading but their accuracy is not guaranteed nor do they form part of any contract. If there is any point which is of particular importance to you, please contact us and we will provide any information you require. This is advisable, particularly if you intend to travel some distance to view the property. The mention of any appliances and services within these details does not imply that they are in full and efficient working order. These particulars are in draft form awaiting Vendors confirmation of their accuracy. These details must therefore be taken as a guide only.