



HILLS

11 Isis Close, Salford

Salford

In Excess of £300,000

11 Isis Close

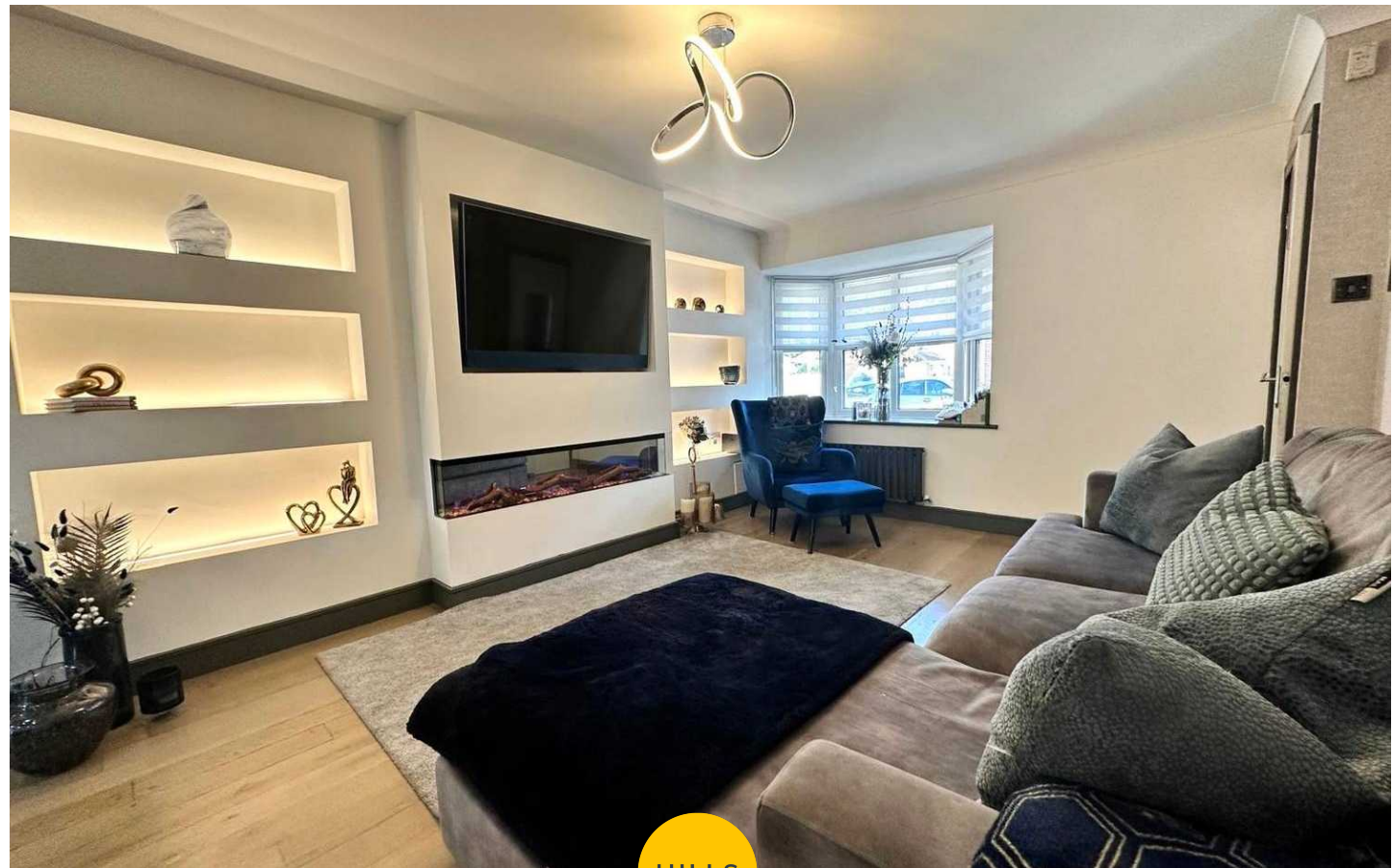
Salford, Salford

EXTENDED TO THE REAR & ideally positioned on a CUL-DE-SAC in a POPULAR RESIDENTIAL LOCATION, this FANTASTIC FAMILY HOME features 3 GENEROUS BEDROOMS, an EN-SUITE, and MODERN FAMILY BATHROOM to the first floor, whilst the SPACIOUS GROUND FLOOR comprises of a porch, entrance hallway, lounge, and..

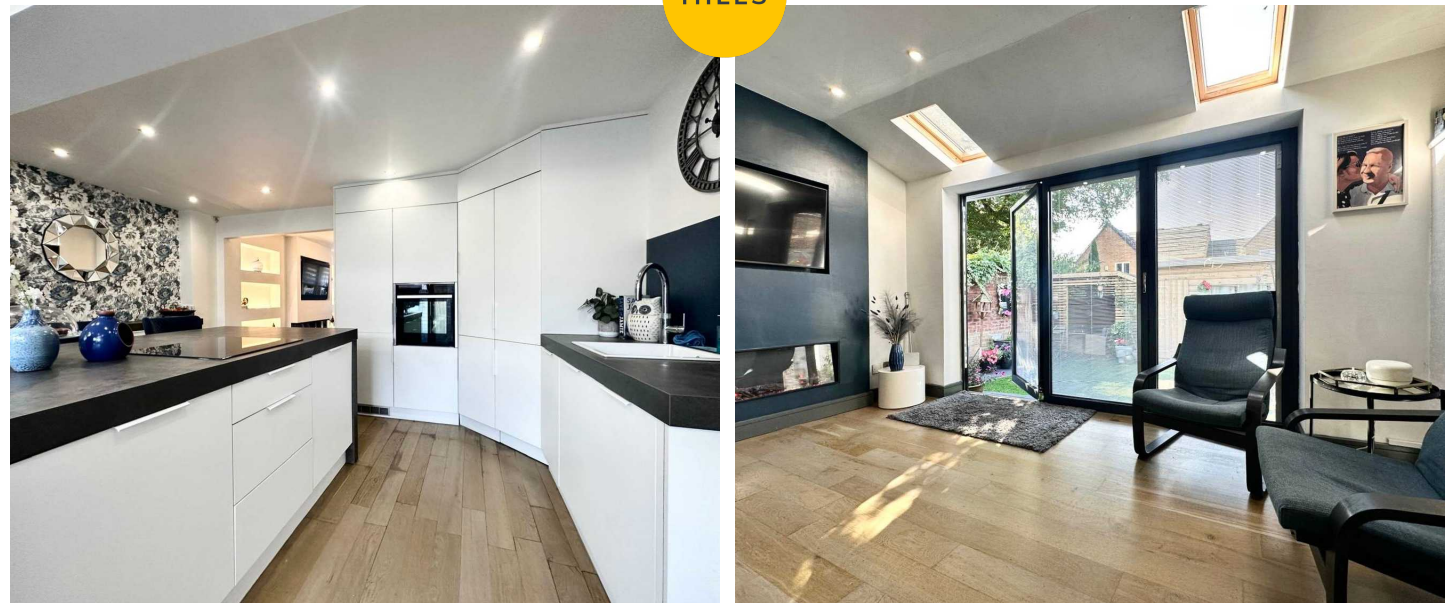
Council Tax band: B

Tenure: Freehold

- FABULOUS FAMILY HOME
- BEAUTIFULLY PRESENTED THROUGHOUT
- EXTENDED TO THE REAR
- OFF ROAD PARKING FOR MULTIPLE CARS
- STUNNING MODERN KITCHEN & DINING AREA
- FAMILY BATHROOM & EN-SUITE
- POSITIONED ON A CUL-DE-SAC IN A POPULAR RESIDENTIAL LOCATION
- CLOSE TO MANY LOCAL AMENITIES & EXCELLENT TRANSPORT LINKS



HILLS



Porch

7' 3" x 3' 11" (2.20m x 1.20m)

Hall

5' 11" x 3' 3" (1.80m x 1.00m)

Reception

14' 9" x 11' 2" (4.50m x 3.40m)

Kitchen / Dining

18' 4" x 15' 5" (5.60m x 4.70m)

Landing

8' 10" x 6' 7" (2.70m x 2.00m)

Bedroom One

11' 10" x 8' 6" (3.60m x 2.60m)

En-suite

7' 7" x 2' 11" (2.30m x 0.90m)

Bedroom Two

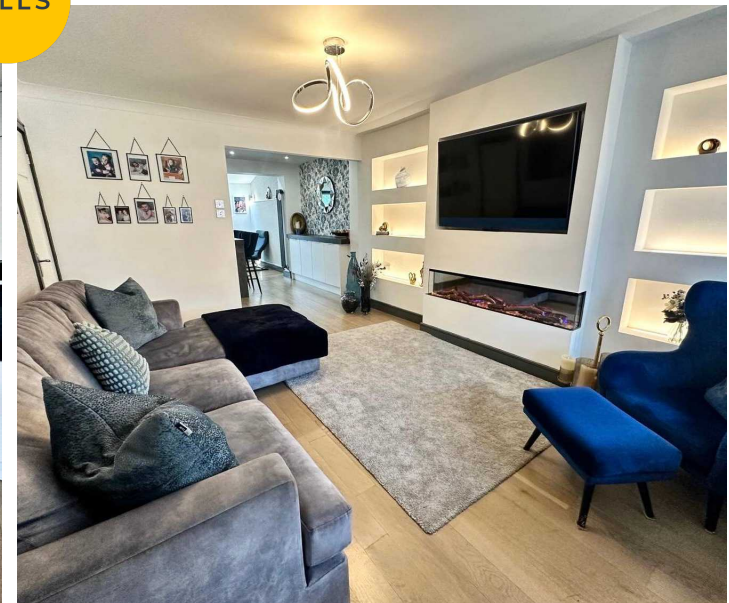
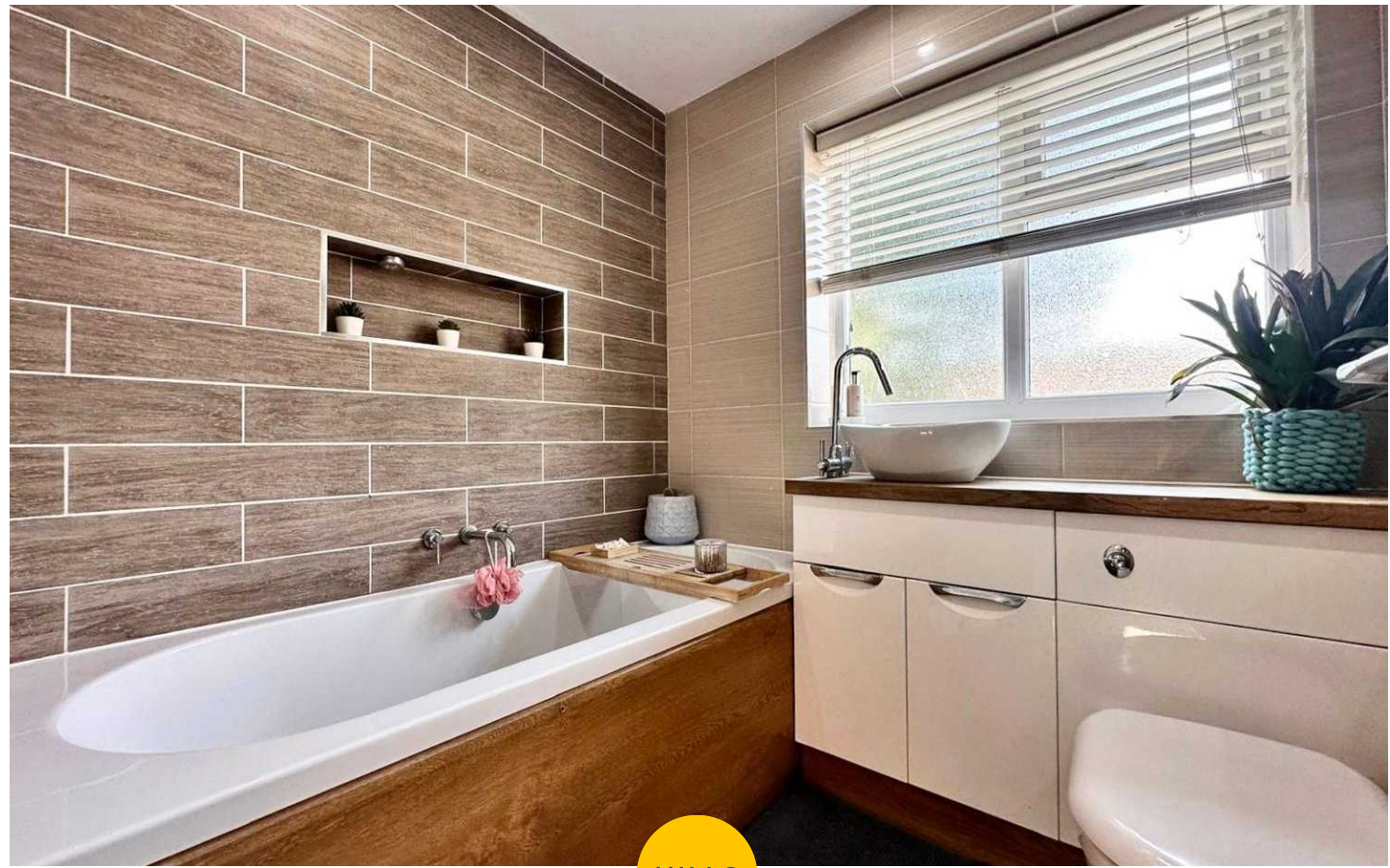
8' 10" x 8' 6" (2.70m x 2.60m)

Bedroom Three

8' 10" x 6' 7" (2.70m x 2.00m)

Bathroom

6' 3" x 5' 7" (1.90m x 1.70m)



Porch

7' 3" x 3' 11" (2.20m x 1.20m)

Hall

5' 11" x 3' 3" (1.80m x 1.00m)

Reception

14' 9" x 11' 2" (4.50m x 3.40m)

Kitchen / Dining

18' 4" x 15' 5" (5.60m x 4.70m)

Landing

8' 10" x 6' 7" (2.70m x 2.00m)

Bedroom One

11' 10" x 8' 6" (3.60m x 2.60m)

En-suite

7' 7" x 2' 11" (2.30m x 0.90m)

Bedroom Two

8' 10" x 8' 6" (2.70m x 2.60m)

Bedroom Three

8' 10" x 6' 7" (2.70m x 2.00m)

Bathroom

6' 3" x 5' 7" (1.90m x 1.70m)



HILLS

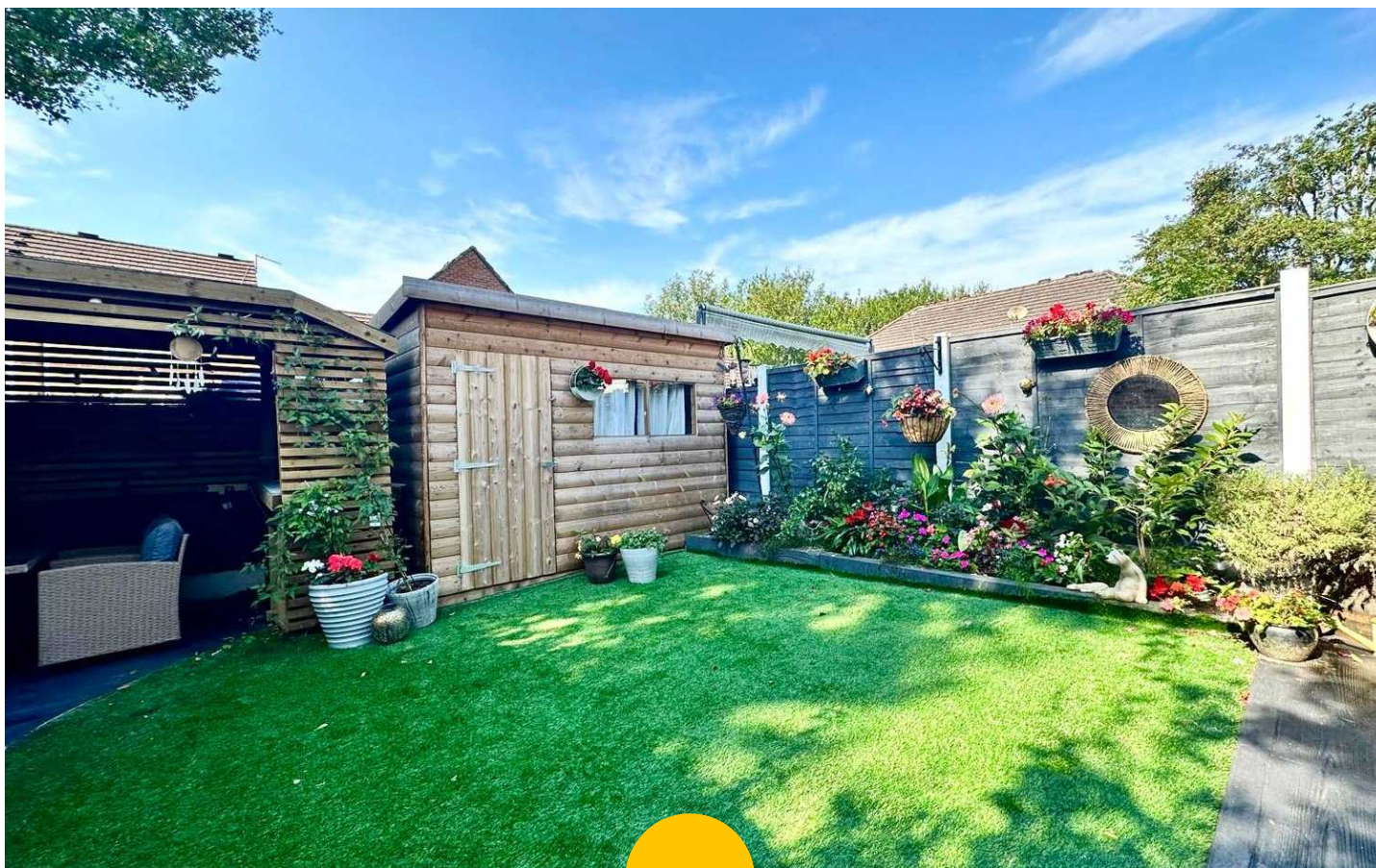


FRONT GARDEN

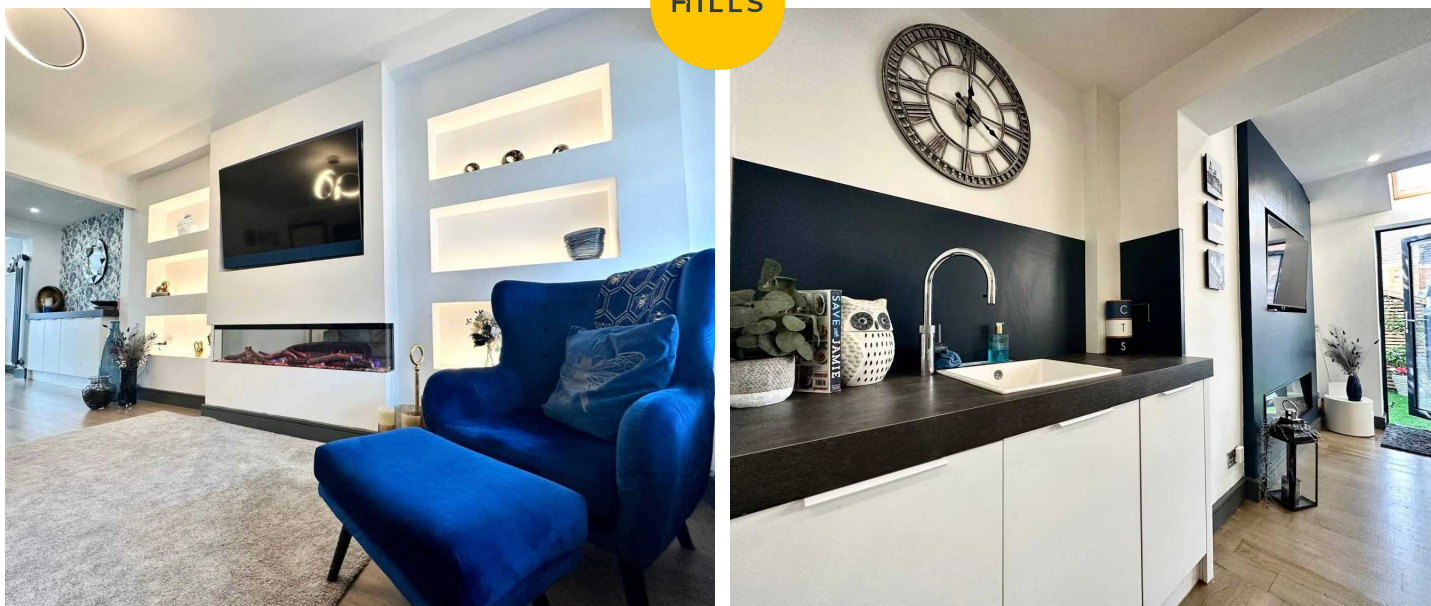
Block paved driveway with enough room for two cars to park, planted borders.

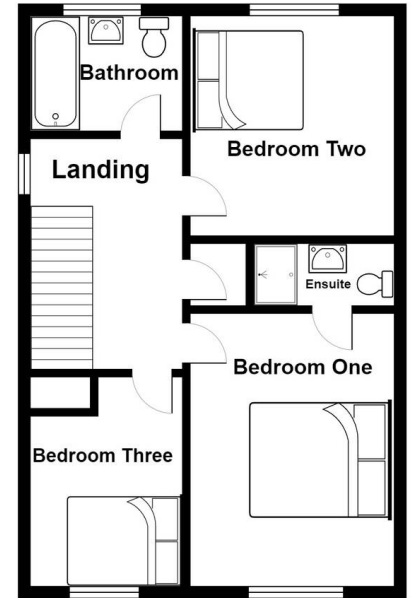
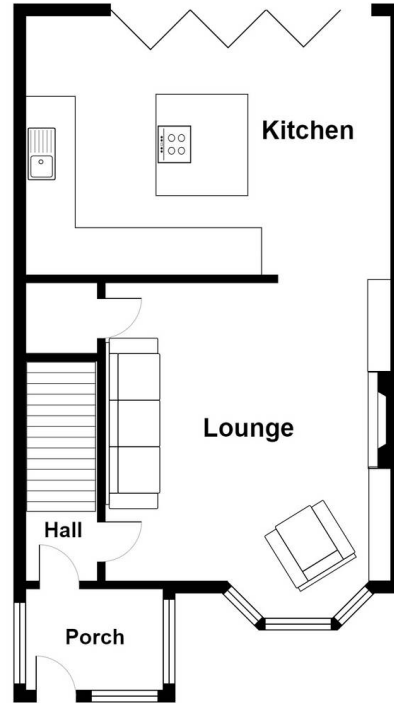
REAR GARDEN

Garden with artificial lawn, planted borders, paved seating area, covered seated area and wooden shed.



HILLS





You can include any text here. The text can be modified upon generating your brochure.

