



New Barton Street

Salford



£200,000

New Barton Street

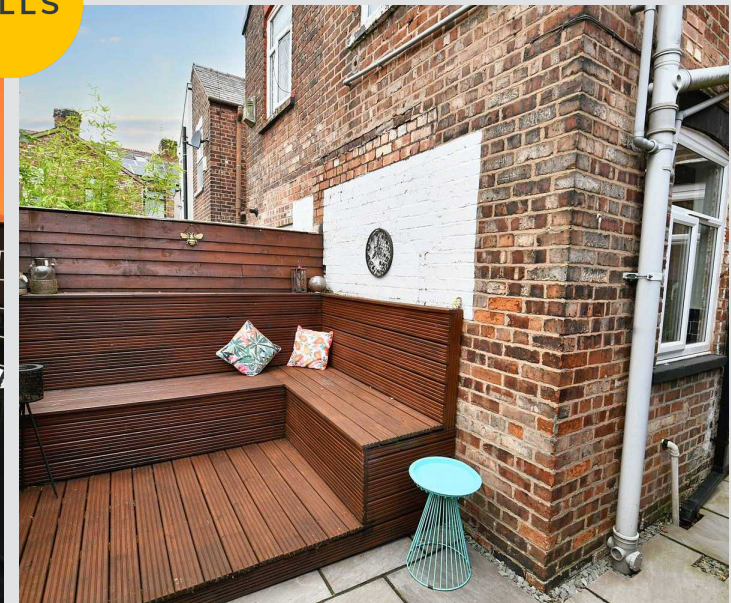
Salford

As immaculately presented, bay-fronted, two bedroom terraced property – located on the popular Irlam o' th' Height! Benefitting from two generously sized double bedrooms and a large, four-piece bathroom!

Council Tax band: A

Tenure: Freehold

- Bay-Fronted, Two Bedroom Terraced Property
- Located in the Popular Irlam o' th' Height
- Spacious Lounge and Dining Rooms
- Modern Fitted Kitchen and a Large, Four-Piece Bathroom
- Two Generously-Sized Double Bedrooms
- Beautifully Presented Courtyard Garden to the Rear, Complete with a Decked Seating Area and Paving
- Ideal First Time Home or Investment
- Close to Excellent Transport Links into Salford Quays, Media City and Manchester City Centre
- Viewing is Highly Recommended!



Entrance Hallway

A welcoming entrance hallway complete with a ceiling light point, wall mounted radiator and laminate flooring.

Lounge

12' 3" x 10' 8" (3.74m x 3.24m)

Complete with a ceiling light point, double glazed window and wall mounted radiator. Fitted with laminate flooring.

Dining Room

14' 2" x 13' 2" (4.32m x 4.01m)

Complete with a ceiling light point, double glazed window and wall mounted radiator. Fitted with laminate flooring.

Kitchen

10' 2" x 8' 5" (3.09m x 2.57m)

Featuring complementary fitted units with space for a range cooker, washer and dishwasher. Complete with a ceiling light point, double glazed window and wall mounted radiator. Fitted with vinyl flooring.

Landing

Complete with a ceiling light point, wall mounted radiator and carpet flooring.

Bedroom One

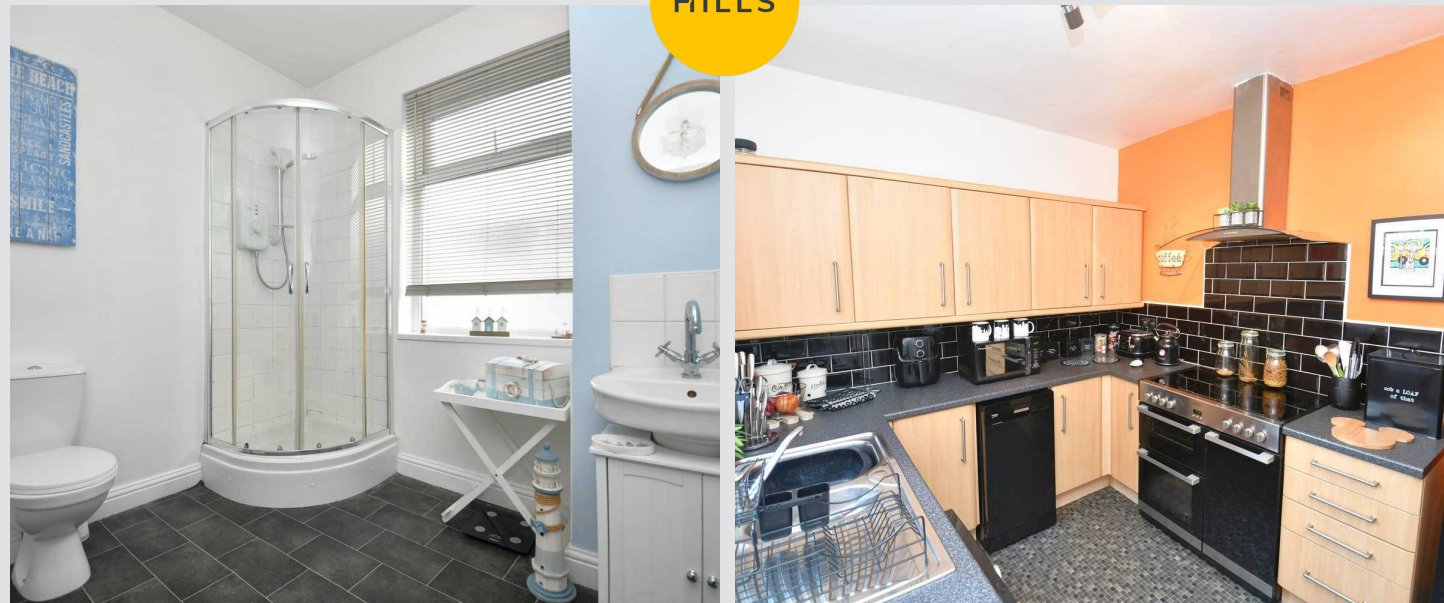
14' 2" x 12' 3" (4.33m x 3.74m)

Complete with a ceiling light point, double glazed window and wall mounted radiator. Fitted with carpet flooring.

Bedroom Two

13' 3" x 9' 2" (4.03m x 2.80m)

Complete with a ceiling light point, double glazed window and wall mounted radiator. Fitted with carpet flooring.



Bathroom

10' 2" x 8' 5" (3.09m x 2.57m)

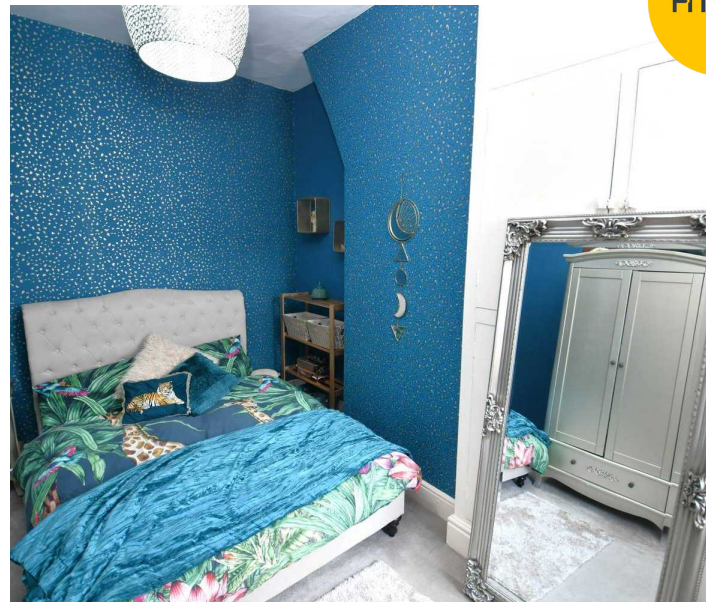
Featuring a four-piece suite including a bath, shower cubicle, hand wash basin and W.C. Complete with a ceiling light point, two double glazed windows, tiled walls and vinyl flooring.

External

To the rear of the property is a beautifully presented courtyard garden with paving and decked seating area.

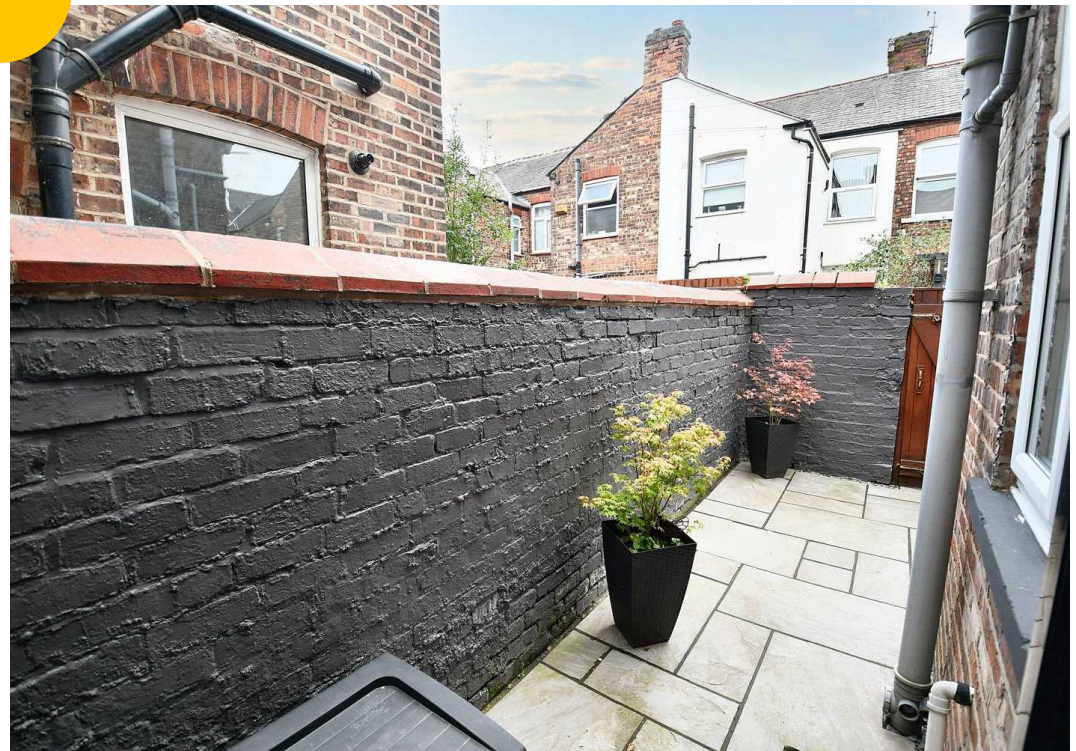


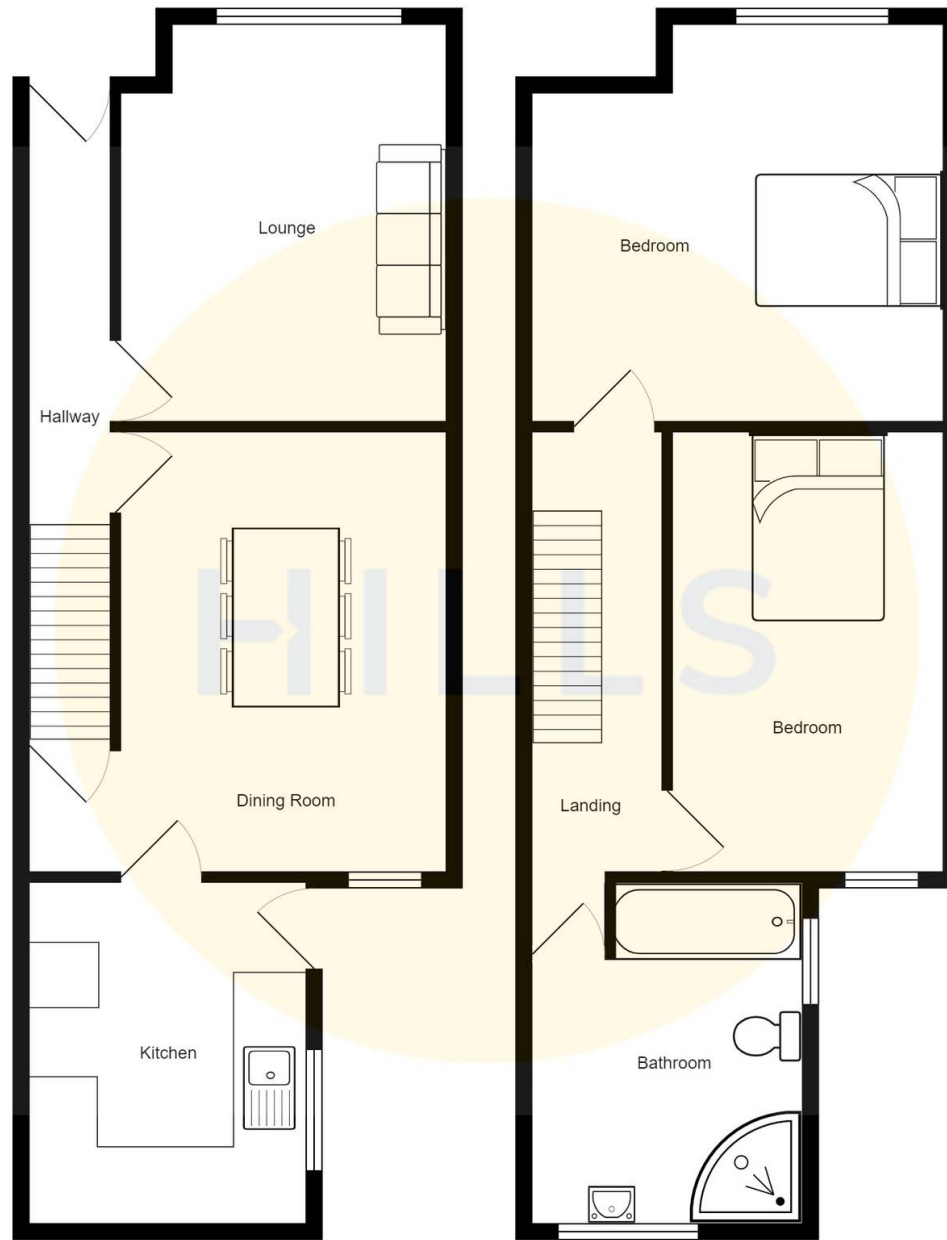
HILLS





HILLS







Hills | Salfords Estate Agent

Hills Residential, Sentinel House Albert Street - M30 0SS

0161 707 4900

sales@hills.agency

www.hills.agency/



THE PROPERTY MISDESCRIPTIONS ACT 1991 The Agent has not tested any apparatus, equipment, fixtures and fittings or services and so cannot verify that they are in working order or fit for the purpose. A Buyer is advised to obtain verification from their Solicitor or Surveyor. References to the Tenure of a Property are based on information supplied by the Seller. The Agent has not had sight of the title documents. A Buyer is advised to obtain verification from their Solicitor. You are advised to check the availability of this property before travelling any distance to view. Every effort and precaution has been made to ensure these particulars are correct and not misleading but their accuracy is not guaranteed nor do they form part of any contract. If there is any point which is of particular importance to you, please contact us and we will provide any information you require. This is advisable, particularly if you intend to travel some distance to view the property. The mention of any appliances and services within these details does not imply that they are in full and efficient working order. These particulars are in draft form awaiting Vendors confirmation of their accuracy. These details must therefore be taken as a guide only.