

Somerset Road, Eccles

Manchester



Offers Over £240,000

Somerset Road

Eccles, Manchester

Introducing this fabulous two bedroom semi-detached house in Ellesmere Park with spacious lounge, modern kitchen, conservatory. Gated parking, low-maintenance garden. Ideal location near Salford Royal Hospital. Potential for third bedroom. Close to amenities and transport links. Council Tax band: A

Tenure: Freehold

- Located in the Sought After Location of Ellesmere Park, Occupying a Generous Corner Plot
- Spacious, yet Cosy Lounge
- Modern Contemporary Fitted Kitchen
- Two Generously Sized Double Bedrooms
- Modern Fitted Shower Room
- Gated Off Road Parking
- Block Paved Low Maintenance Rear Garden
- Located Within Walking Distance to the Renowned Salford Royal Hospital
- Potential to Create a Third Bedroom by Splitting the Master Bedroom
- Perfectly Positioned Close to Excellent Amenities & Transport Links



Entrance Hallway

Featuring ceiling light point.

Lounge

11' 6" x 15' 9" (3.50m x 4.80m)

Featuring a fire surround. Complete with a ceiling light point, double glazed window and wall mounted radiator. Fitted with carpet flooring.

Kitchen

17' 7" x 10' 1" (5.35m x 3.08m)

Featuring complementary wall and base units with space for a washing machine, dishwasher and fridge freezer. Complete with a ceiling spotlights, tiled splash back and tiled flooring.

Conservatory

11' 1" x 9' 11" (3.37m x 3.02m)

Featuring ceiling spotlights, electric fire, double glazed windows. Fitted with laminate flooring.

Landing

Complete with a ceiling light point and carpet flooring.

Bedroom One

9' 11" x 18' 1" (3.03m x 5.50m)

Featuring ceiling light point, two double glazed windows and two wall - mounted radiators. Fitted with carpet flooring.



Bedroom Two

11' 7" x 9' 7" (3.53m x 2.91m)

Featuring ceiling light point, double glazed window and wall - mounted radiator. Fitted with carpet flooring.

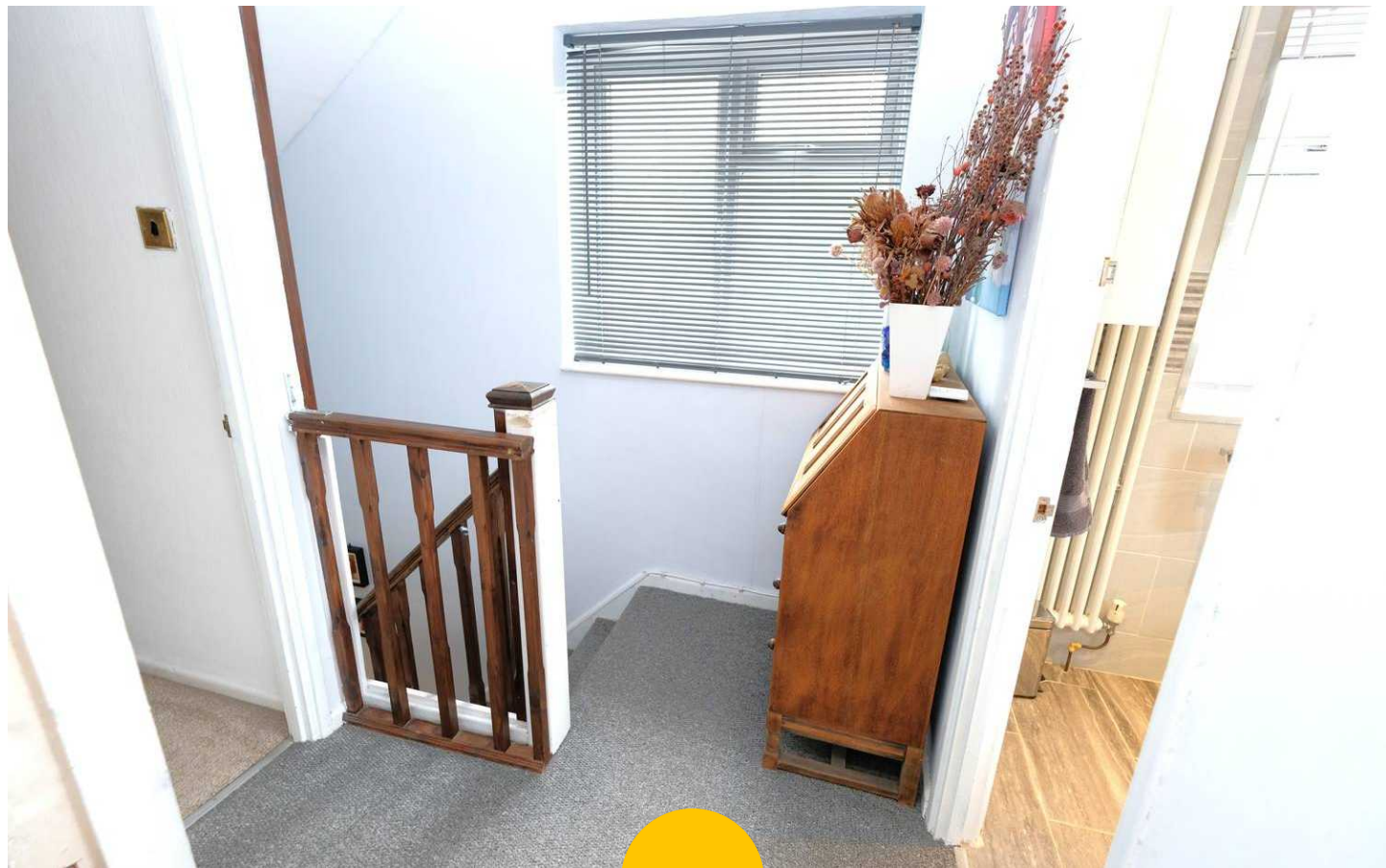
Bathroom

5' 6" x 7' 7" (1.67m x 2.31m)

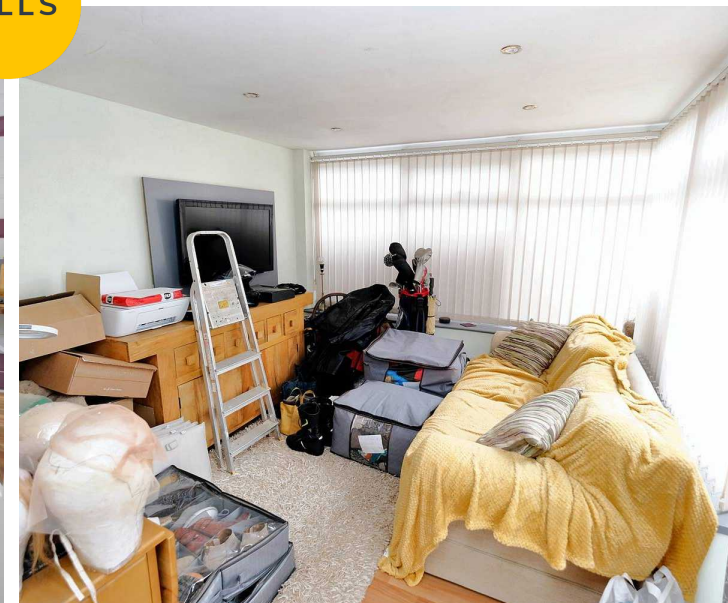
Featuring three piece suite including w/c, hand wash basin, shower. Complete with ceiling light point, double glazed window and heated towel rail. Fitted with tiled walls and flooring.

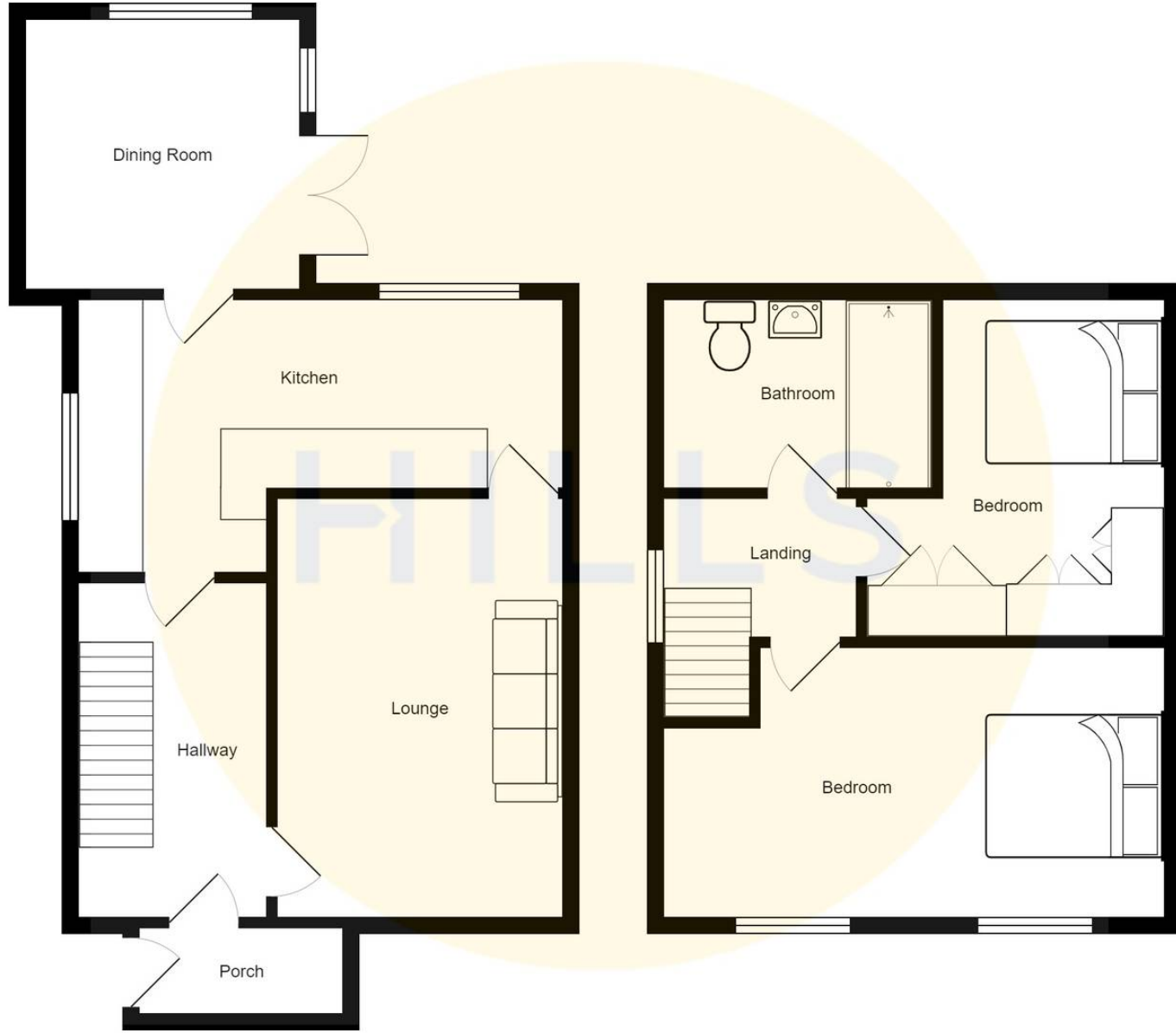
External

To the rear of the property is a paved garden with storage shed.



HILLS







Hills | Salfords Estate Agent

Hills Residential, Sentinel House Albert Street - M30 0SS

0161 707 4900

sales@hills.agency

www.hills.agency/



THE PROPERTY MISDESCRIPTIONS ACT 1991 The Agent has not tested any apparatus, equipment, fixtures and fittings or services and so cannot verify that they are in working order or fit for the purpose. A Buyer is advised to obtain verification from their Solicitor or Surveyor. References to the Tenure of a Property are based on information supplied by the Seller. The Agent has not had sight of the title documents. A Buyer is advised to obtain verification from their Solicitor. You are advised to check the availability of this property before travelling any distance to view. Every effort and precaution has been made to ensure these particulars are correct and not misleading but their accuracy is not guaranteed nor do they form part of any contract. If there is any point which is of particular importance to you, please contact us and we will provide any information you require. This is advisable, particularly if you intend to travel some distance to view the property. The mention of any appliances and services within these details does not imply that they are in full and efficient working order. These particulars are in draft form awaiting Vendors confirmation of their accuracy. These details must therefore be taken as a guide only.