



16 Wentworth Road, Swinton

Manchester



£375,000

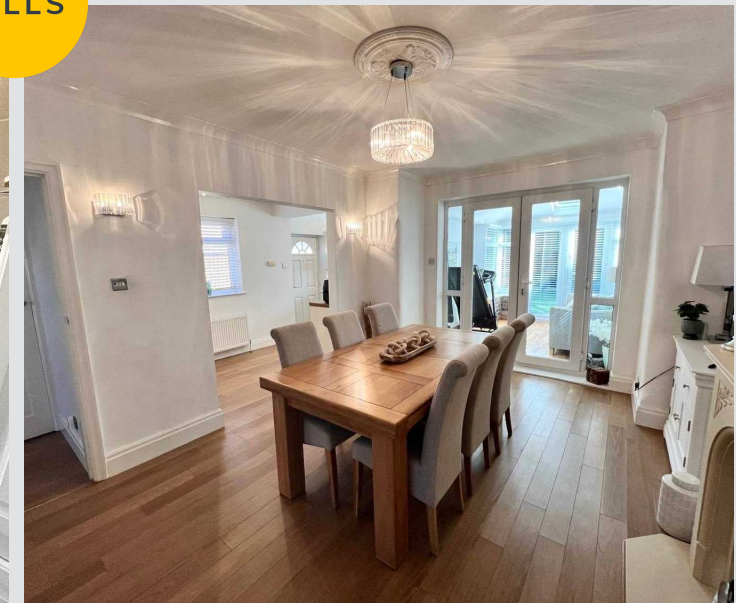
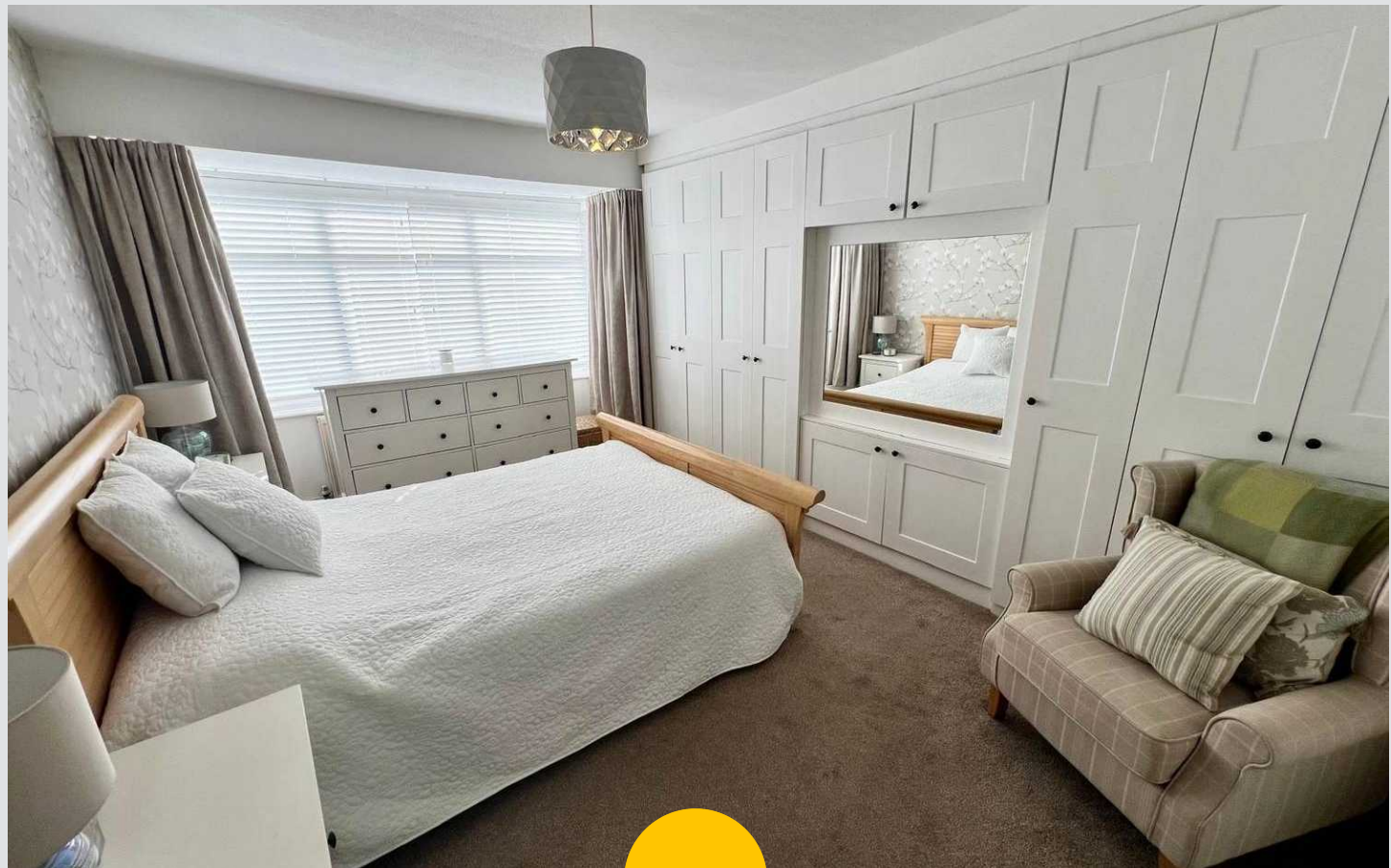
16 Wentworth Road

Swinton, Manchester

* STUNNING FAMILY HOME * MUST BE SEEN TO BE FULLY APPRECIATED * Ideally positioned in a DESIRABLE SOUTH SWINTON LOCATION, this FABULOUS HOME features...

Council Tax band: TBD

- 3 GENEROUS BEDROOMS
- CLOSE TO MANY LOCAL AMENITIES & EXCELLENT TRANSPORT LINKS
- UPVC DOUBLE GLAZED WINDOWS & RECENTLY FITTED 'COMBI' GAS CENTRAL HEATING
- DETACHED GARAGE & OFF-ROAD PARKING FOR MULTIPLE CARS
- BEAUTIFULLY PRESENTED & SPACIOUS FAMILY HOME
- DESIRABLE SOUTH SWINTON LOCATION
- FITTED MODERN KITCHEN & BATHROOM
- WELL MAINTAINED GARDENS TO THE FRONT & REAR
- 2 RECEPTION ROOMS + CONSERVATORY



HILLS

Conservatory

Dimensions: 9' 2" x 9' 2" (2.8m x 2.8m).

Bedroom 1

Dimensions: 13' 9" x 10' 6" (4.2m x 3.2m).

Reception 2

Dimensions: 15' 5" x 12' 2" (4.7m x 3.7m).

Bedroom 3

Dimensions: 8' 2" x 7' 10" (2.5m x 2.4m).

Externally

To the front garden with paving, planted borders and hedge. To the rear garden with lawn, planted borders, driveway for multiple cars and detached garage.

W,C

Dimensions: 3' 11" x 2' 7" (1.2m x 0.8m).

Reception 1

Dimensions: 13' 9" x 12' 2" (4.2m x 3.7m).

Entrance Hall

Dimensions: 15' 1" x 6' 7" (4.6m x 2.0m).

Landing

Dimensions: 9' 2" x 8' 2" (2.8m x 2.5m).

Kitchen

Dimensions: 18' 8" x 6' 7" (5.7m x 2.0m).

Bathroom

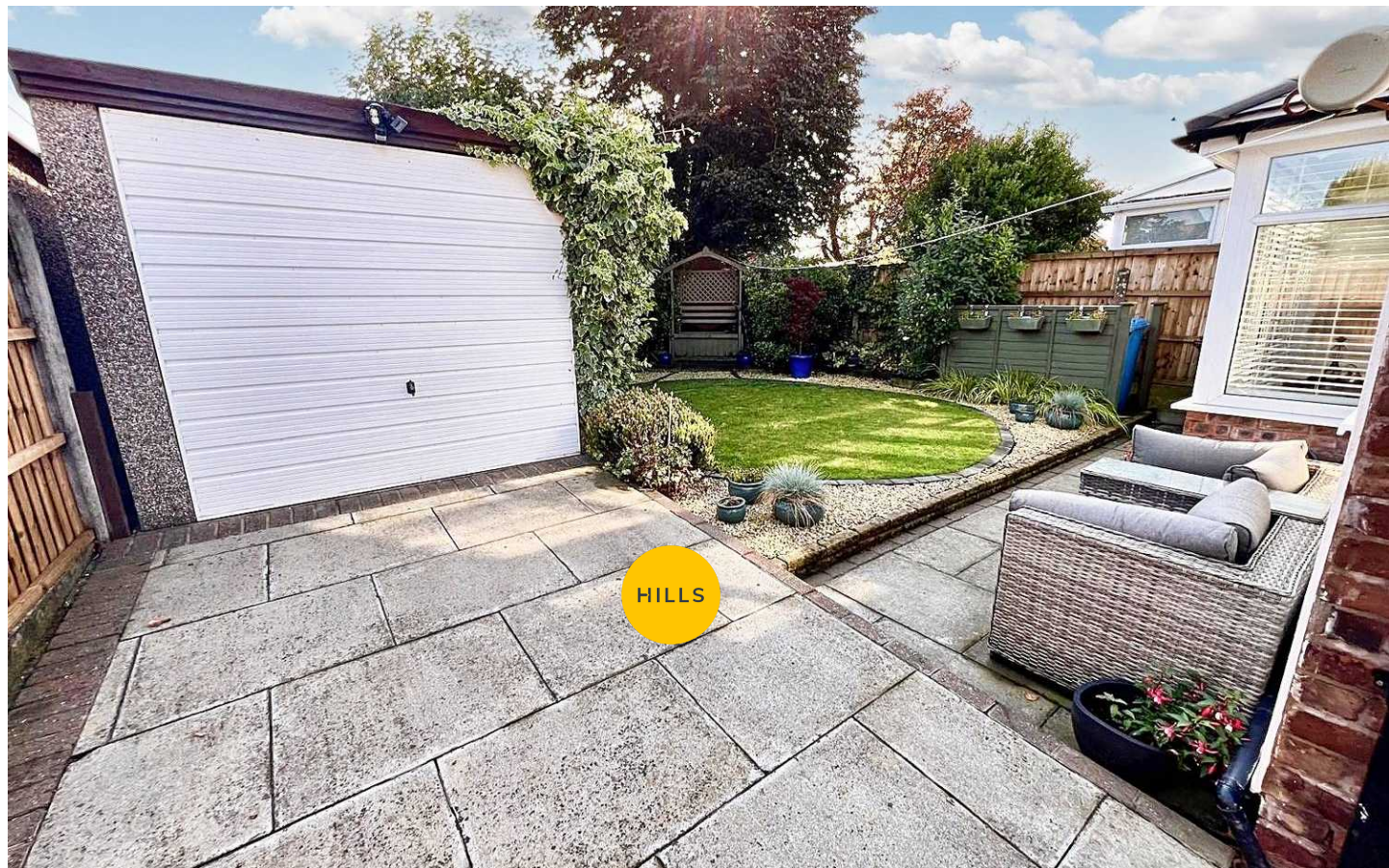
Dimensions: 7' 3" x 6' 11" (2.2m x 2.1m).

Bedroom 2

Dimensions: 15' 5" x 12' 2" (4.7m x 3.7m).

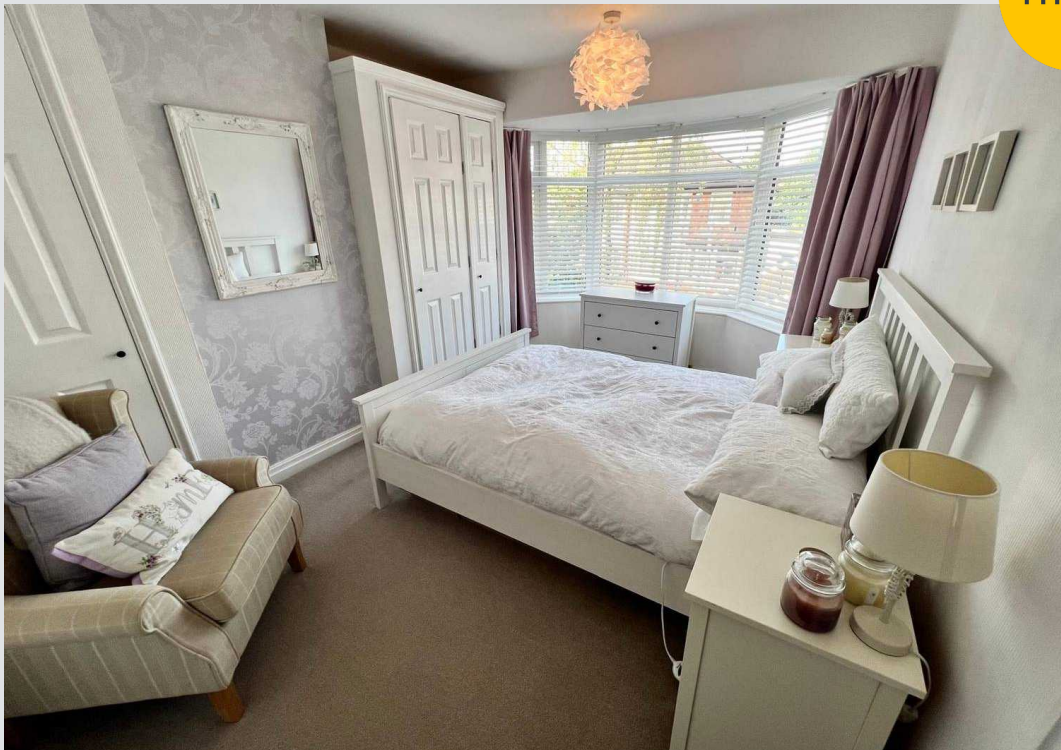
Entrance Porch

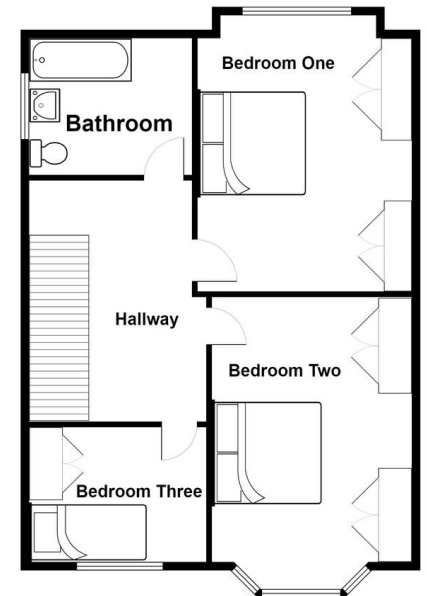
Dimensions: 6' 7" x 1' 8" (2.0m x 0.5m).





HILLS







Hills Swinton | Salfords Estate Agent

4 Pendlebury Road, Swinton – M27 4AR

0161 794 2888

swinton@hills.agency

www.hills.agency/



THE PROPERTY MISDESCRIPTIONS ACT 1991 The Agent has not tested any apparatus, equipment, fixtures and fittings or services and so cannot verify that they are in working order or fit for the purpose. A Buyer is advised to obtain verification from their Solicitor or Surveyor. References to the Tenure of a Property are based on information supplied by the Seller. The Agent has not had sight of the title documents. A Buyer is advised to obtain verification from their Solicitor. You are advised to check the availability of this property before travelling any distance to view. Every effort and precaution has been made to ensure these particulars are correct and not misleading but their accuracy is not guaranteed nor do they form part of any contract. If there is any point which is of particular importance to you, please contact us and we will provide any information you require. This is advisable, particularly if you intend to travel some distance to view the property. The mention of any appliances and services within these details does not imply that they are in full and efficient working order. These particulars are in draft form awaiting Vendors confirmation of their accuracy. These details must therefore be taken as a guide only.