

90 Worsley Road, Eccles

Manchester



In Excess of £260,000

Worsley Road

Eccles, Manchester

AVAILABLE SEPTEMBER BEAUTIFULLY PRESENTED
THROUGHOUT * EXTENDED THREE BEDROOM SEMI
DETACHED HOME * CATCHMENT FOR OUTSTANDING
SCHOOLING * This FANTAS...
Council Tax band: C

Tenure: Leasehold



HILLS



Hall

Dimensions: 7' 3" x 5' 0" (2.21m x 1.52m). Composite door and double glazed window to the front, ceiling light point, wall mounted radiator and carpeted floor.

Lounge

Dimensions: 14' 2" x 13' 3" (4.31m x 4.04m). Doubled glazed window to the front, ceiling spot lights, wall mounted radiator and carpeted floors.

Kitchen/Diner

Dimensions: 24' 1" x 7' 1" (7.34m x 2.16m). A range of wall and base units complemented by work surfaces and integral sink and drainer unit. Integrated dish washer, washing machine and fridge freezer (left as a gesture of goodwill). Fire proof splash back, built in gas hob, oven and extractor fan. Breakfast bar, double glazed window and French doors. Three ceiling light points.

First Floor Landing

Access to first floor rooms and loft.

Bedroom One

Dimensions: 13' 6" x 11' 5" (4.11m x 3.48m). Two double glazed windows, ceiling light point, wall mounted radiator and carpeted floor.

Bedroom Two

Dimensions: 10' 3" x 6' 6" (3.12m x 1.98m). Double glazed window, ceiling light point, wall mounted radiator and laminate floor.

Bedroom Three

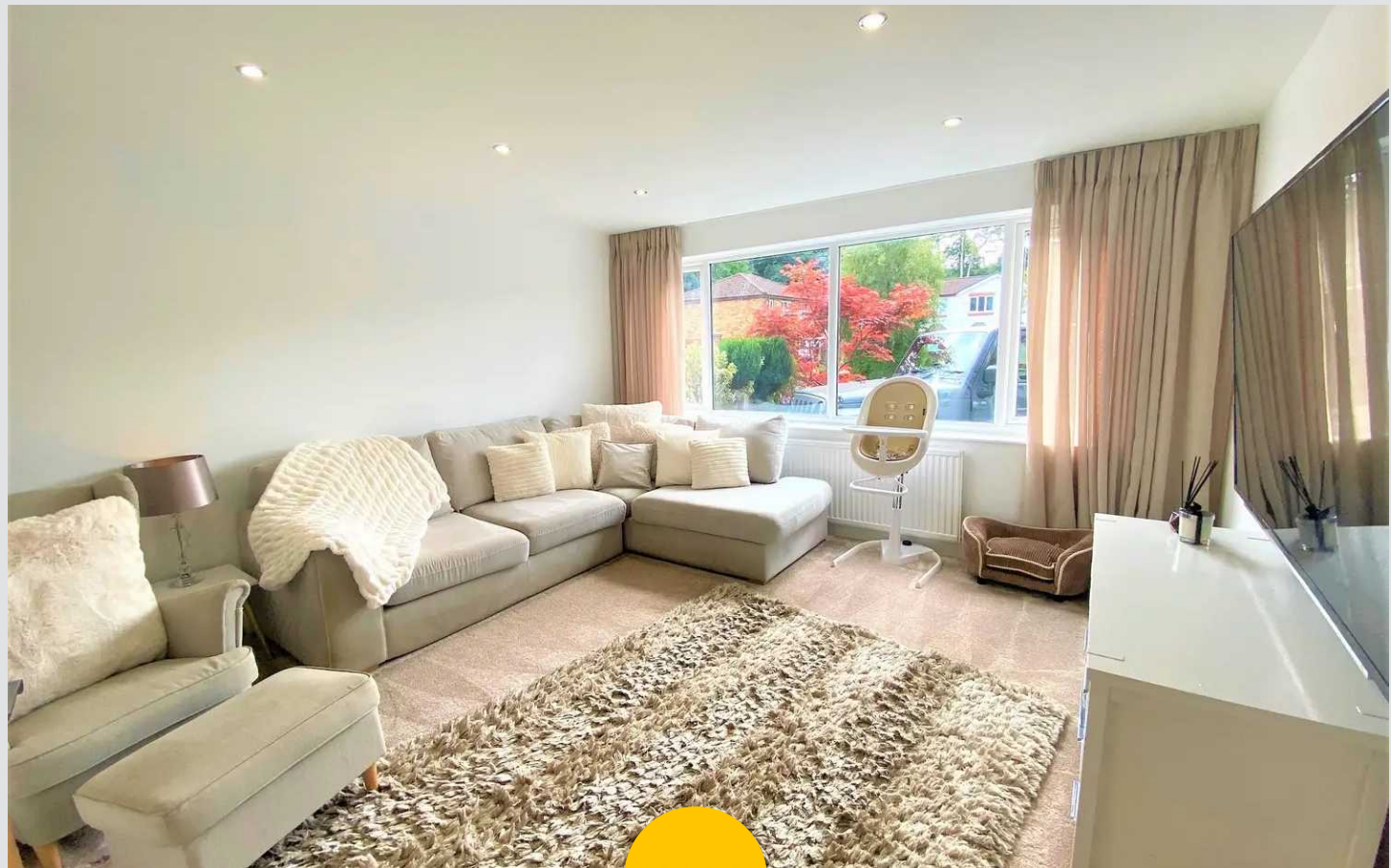
Dimensions: 10' 3" x 6' 6" (3.12m x 1.98m). Double glazed window, ceiling light point, wall mounted radiator and laminate floor.

Bathroom

Dimensions: 9' 6" x 4' 6" (2.89m x 1.37m). Fitted with a four piece suite including bath with electric shower, low level W.C and pedestal hand wash basin. Double glazed window to the side, ceiling spot lights and fully tiled.

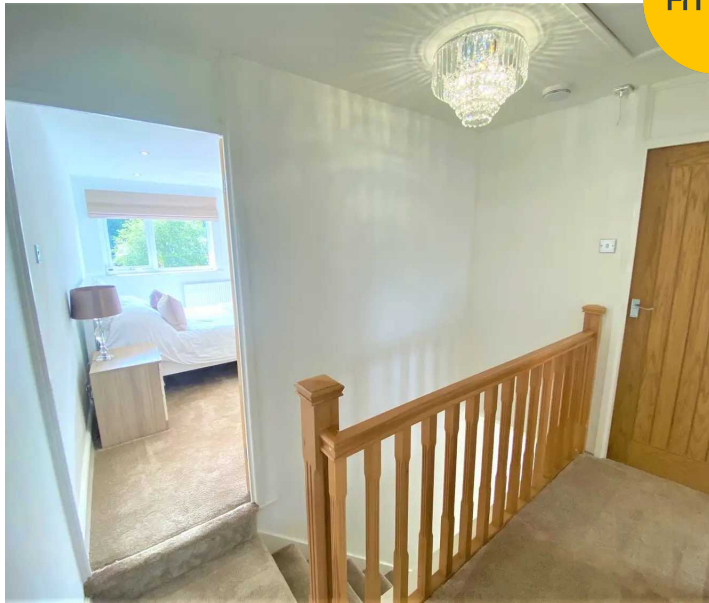
Loft

Dimensions: 19' 9" x 13' 5" (6.02m x 4.09m). Fully boarded.

**HILLS**



HILLS





HILLS







Hills | Salfords Estate Agent

Hills Residential, Sentinel House Albert Street - M30 0SS

0161 707 4900

sales@hills.agency

www.hills.agency/



THE PROPERTY MISDESCRIPTIONS ACT 1991 The Agent has not tested any apparatus, equipment, fixtures and fittings or services and so cannot verify that they are in working order or fit for the purpose. A Buyer is advised to obtain verification from their Solicitor or Surveyor. References to the Tenure of a Property are based on information supplied by the Seller. The Agent has not had sight of the title documents. A Buyer is advised to obtain verification from their Solicitor. You are advised to check the availability of this property before travelling any distance to view. Every effort and precaution has been made to ensure these particulars are correct and not misleading but their accuracy is not guaranteed nor do they form part of any contract. If there is any point which is of particular importance to you, please contact us and we will provide any information you require. This is advisable, particularly if you intend to travel some distance to view the property. The mention of any appliances and services within these details does not imply that they are in full and efficient working order. These particulars are in draft form awaiting Vendors confirmation of their accuracy. These details must therefore be taken as a guide only.