

Cotswold Drive

Salford



£260,000

Cotswold Drive

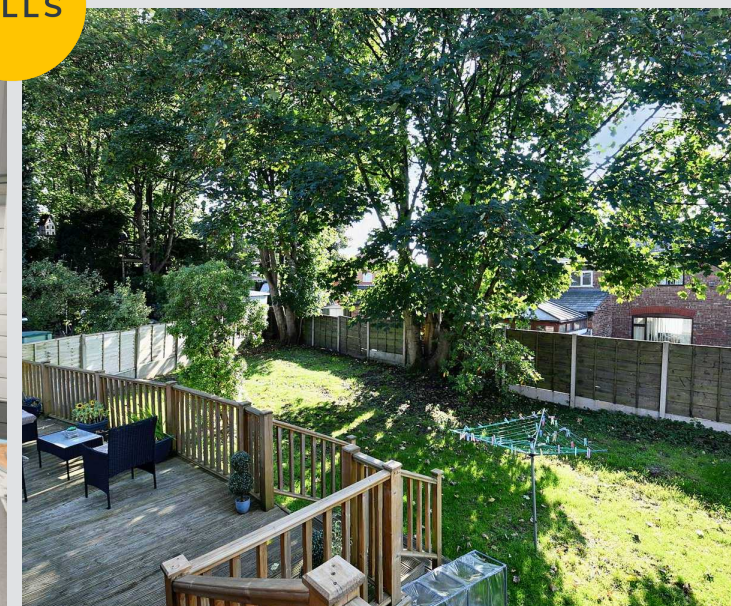
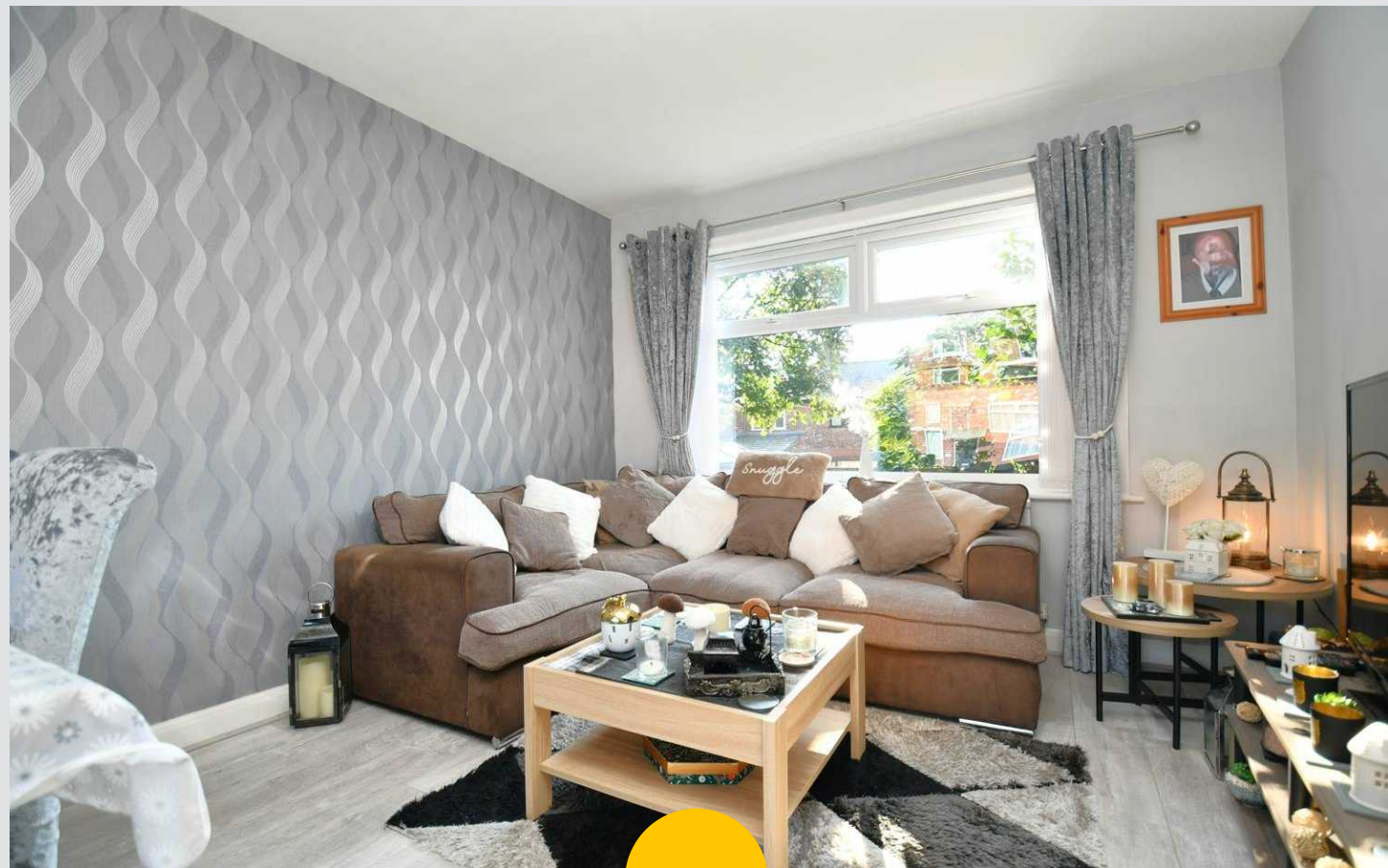
Salford

*****QUIET CUL-DE-SAC AND A HUGE GARDEN TO THE REAR**** Situated on a generous corner plot, this stylish, three bedroom, semi-detached property has a lot to offer! Featuring a modern, three-piece bathroom, and a beauty room downstairs which could be converted back into an additional bathroom!

Council Tax band: TBD

Tenure: Freehold

- Stylish Three Bedroom Semi-Detached Property
- Situated at the End of a Quiet Cul-de-Sac
- Featuring a HUGE Rear Garden, Complete with Laid-to-Lawn Grass, Mature Plants and Decking
- Spacious Lounge Diner and a Beauty Room, which Could be Converted Back into a Downstairs Bathroom
- Stylish Fitted Kitchen and a Modern Three-Piece Family Bathroom
- Three Well-Proportioned Bedrooms
- Low-Maintenance Garden to the Front
- Within Easy Access of Salford Royal Hospital
- Close to Excellent Transport Links into Salford Quays, Media City and Manchester City Centre
- Ideal First Time Home or Investment



Entrance Hallway

Entered via a uPVC front door. Complete with ceiling light point, wall mounted radiator and laminate floors.

Lounge

Dimensions: 10' 11" x 17' 7" (3.32m x 5.37m). A spacious lounge complete with a ceiling light point, two double glazed windows and wall mounted radiator. Fitted with wooden flooring.

Kitchen

Dimensions: 7' 7" x 10' 9" (2.32m x 3.27m). Fitted with a range of wall and base units, with complimentary roll top work surfaces and integrated stainless steel sink and drainer. Integrated oven and hob and space for washing machine and fridge/freezer. Complete with a uPVC door to the rear, ceiling light point, double glazed window and wall mounted radiator. Fitted with vinyl flooring.

Beauty Room

Dimensions: 6' 8" x 6' 9" (2.02m x 2.05m). Complete with a ceiling light point, double glazed window to the side and wall mounted radiator. Fitted with cushioned flooring. Potential to be converted back into a downstairs bathroom.

Landing

Ceiling light point and carpeted floors.

Bedroom One

Dimensions: 9' 0" x 10' 11" (2.74m x 3.34m). Complete with a ceiling light point, double glazed window and wall mounted radiator. Fitted with carpet flooring.

Bedroom Two

Dimensions: 8' 0" x 10' 11" (2.43m x 3.32m). Complete with a ceiling light point, double glazed window and wall mounted radiator. Fitted with carpet flooring.



Bedroom Three

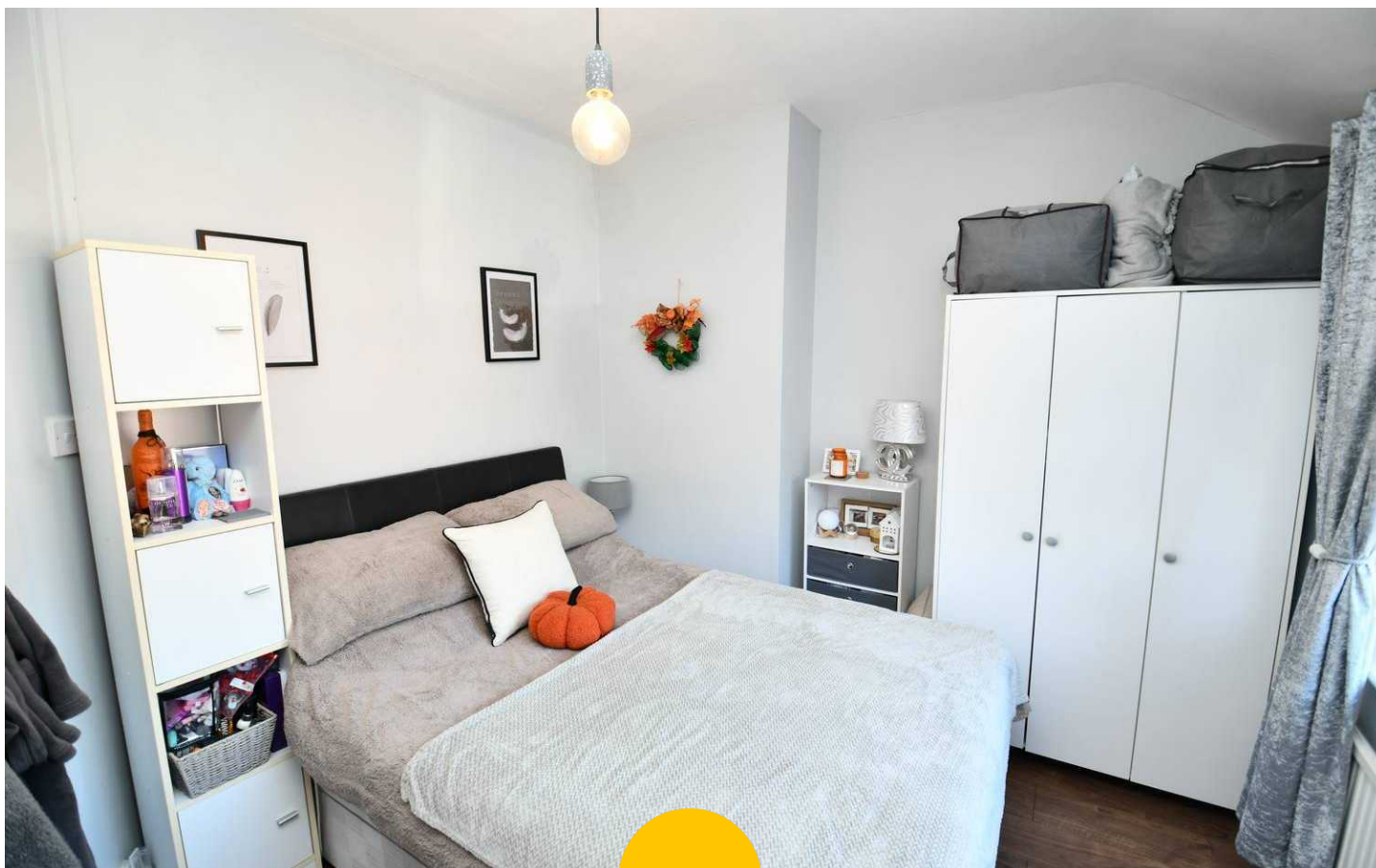
Dimensions: 7' 9" x 7' 3" (2.37m x 2.21m). Complete with a ceiling light point, double glazed windows and wall mounted radiator. Fitted with carpet flooring.

Family Bathroom

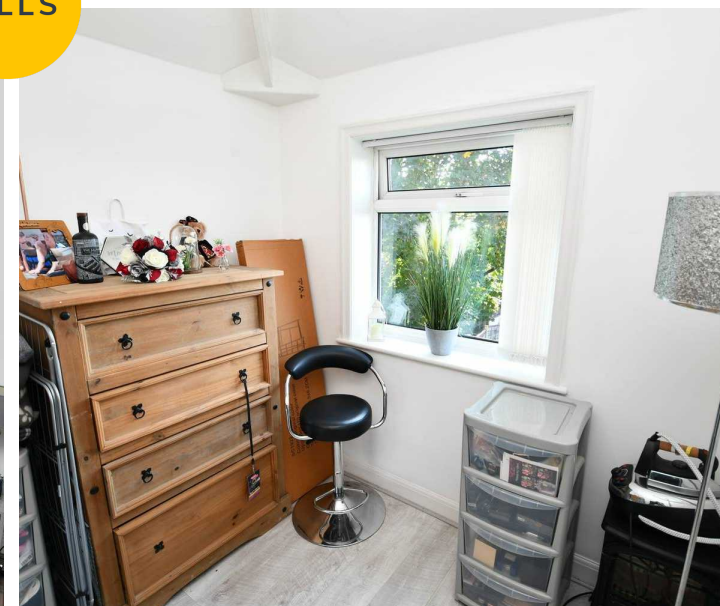
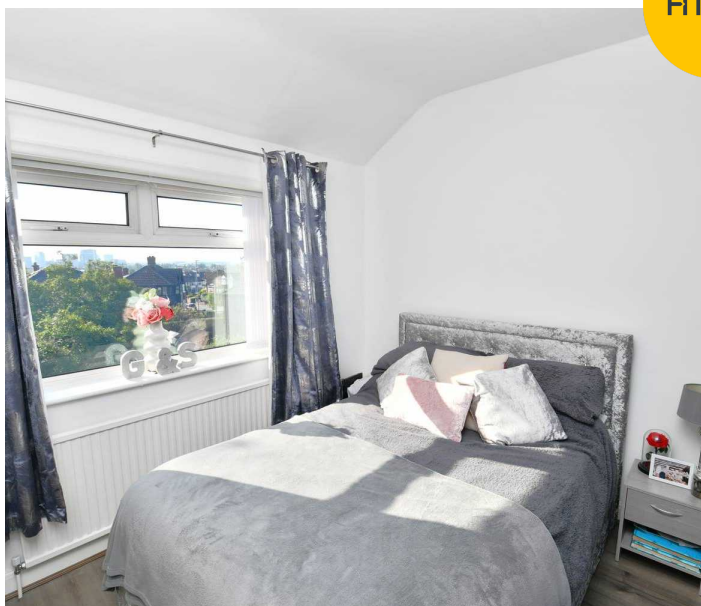
Dimensions: 7' 8" x 6' 1" (2.34m x 1.85m). Fitted with a three piece suite comprising of a low level WC, pedestal hand wash basin and bath with shower over. Complete with a ceiling light point, double glazed window to the front and wall mounted radiator. Fitted with vinyl floors.

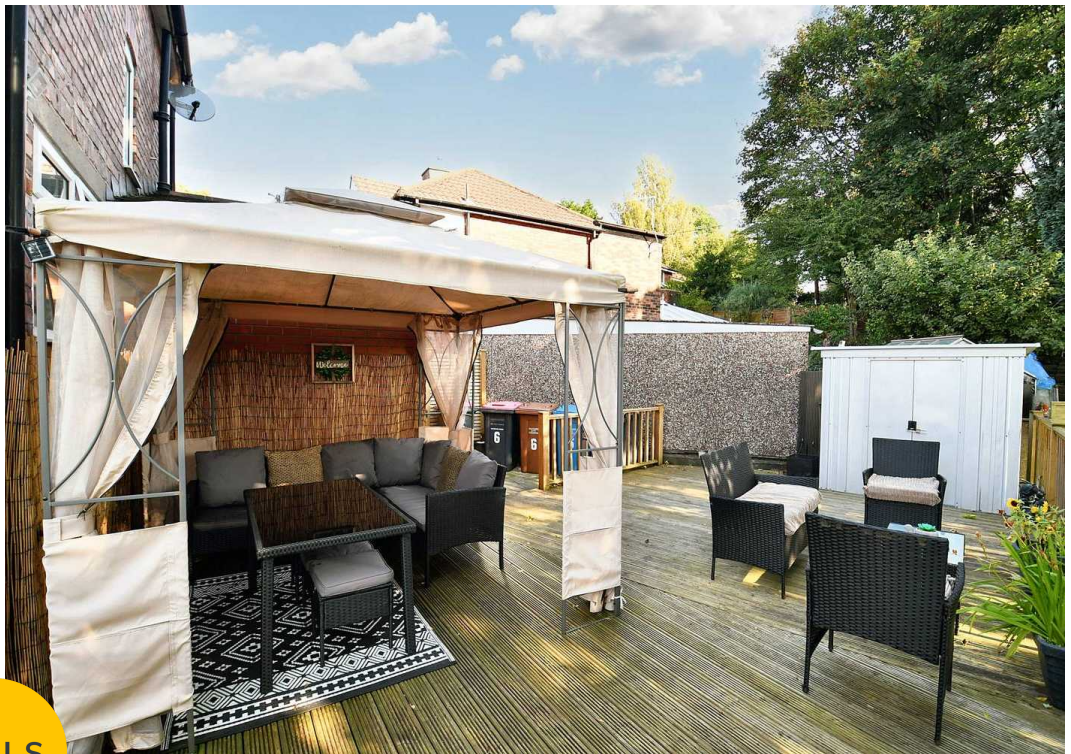
Externally

To the front of the property is a low maintenance garden set behind a low lying brick built wall and gate. To the rear is large and enclosed corner plot garden laid to lawn.



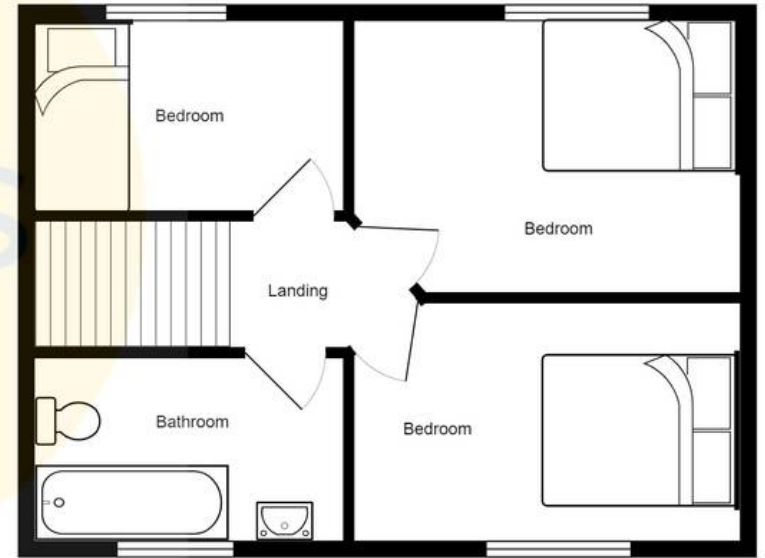
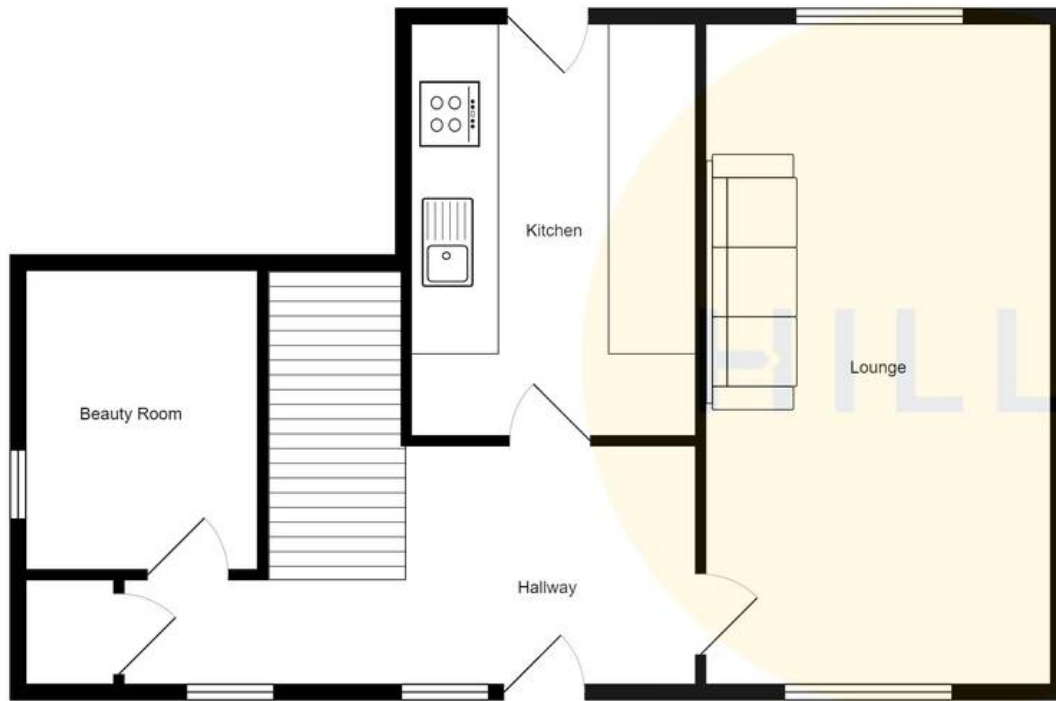
HILLS





HILLS







Hills | Salfords Estate Agent

Hills Residential, Sentinel House Albert Street - M30 0SS

0161 707 4900

sales@hills.agency

www.hills.agency/



THE PROPERTY MISDESCRIPTIONS ACT 1991 The Agent has not tested any apparatus, equipment, fixtures and fittings or services and so cannot verify that they are in working order or fit for the purpose. A Buyer is advised to obtain verification from their Solicitor or Surveyor. References to the Tenure of a Property are based on information supplied by the Seller. The Agent has not had sight of the title documents. A Buyer is advised to obtain verification from their Solicitor. You are advised to check the availability of this property before travelling any distance to view. Every effort and precaution has been made to ensure these particulars are correct and not misleading but their accuracy is not guaranteed nor do they form part of any contract. If there is any point which is of particular importance to you, please contact us and we will provide any information you require. This is advisable, particularly if you intend to travel some distance to view the property. The mention of any appliances and services within these details does not imply that they are in full and efficient working order. These particulars are in draft form awaiting Vendors confirmation of their accuracy. These details must therefore be taken as a guide only.