



Laburnum Street

Salford



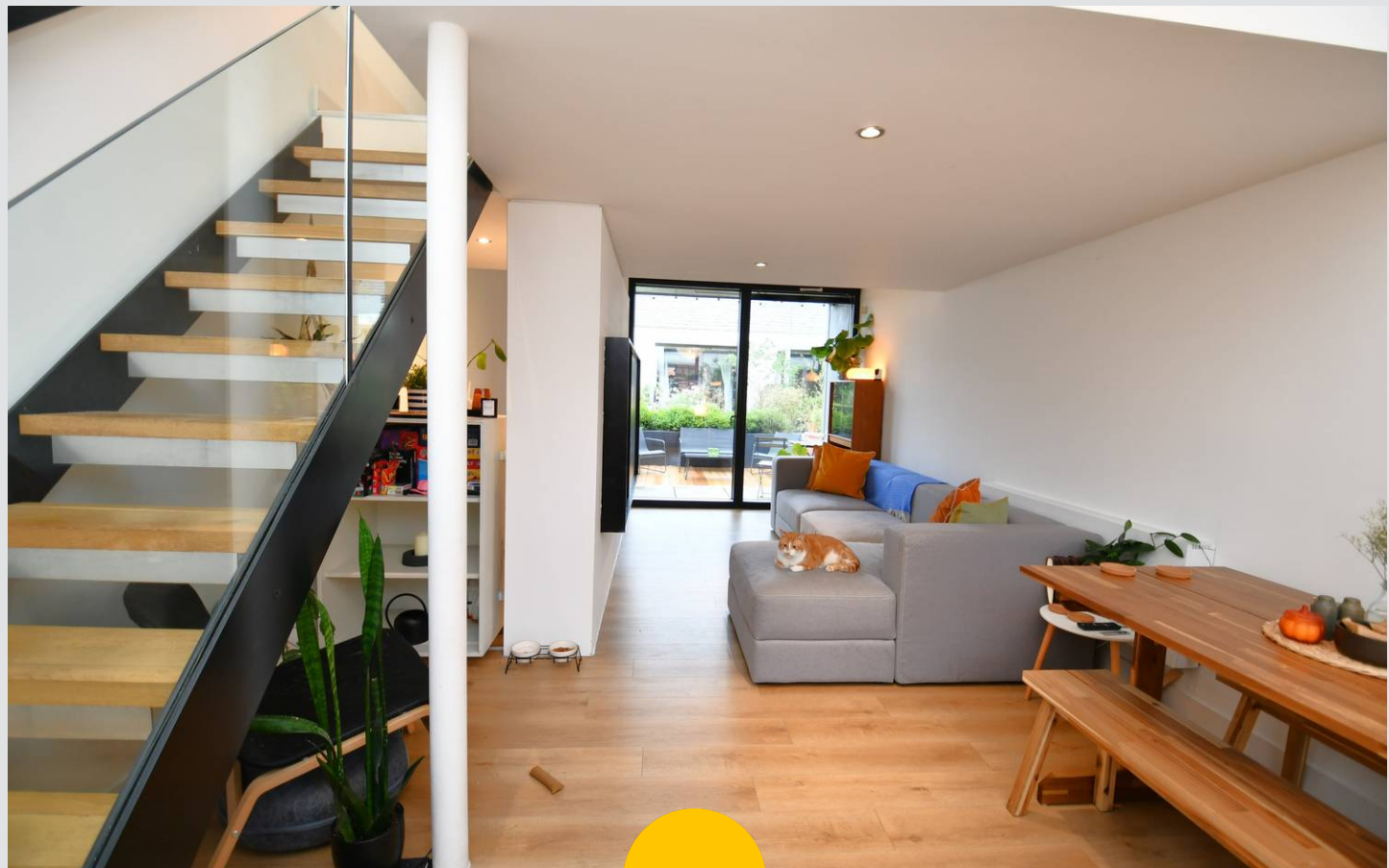
£210,000

# Laburnum Street

## Salford

Stylish terraced property in the popular Chimney Pot Park, with an abundance of space for those looking for their own slice of urban living. Within walking distance of Salford Quays and Media City. Boasting two double bedrooms and modern interiors, this property would be ideal for first-time buyers  
Council Tax band: A

- Stylish Two Bedroom Terraced Property Located on the Award-Winning 'Chimney Pot Park' Development
- Within Walking Distance of Salford Quays & Media City, which are Host to a Fine Array of Bars, Shops and Restaurants
- Close to Langworthy Tram Stop, which Provides Direct Access into Manchester City Centre
- Two Double Bedrooms, with a Lightwell in the Main Bedroom
- Modern Three-Piece Bathroom, Complete with a 'Sunken' Bath
- Large 22FT Lounge Diner, with Sliding Doors Leading out onto the Garden Terrace at the Rear
- Modern Fitted Kitchen on the Top Floor, Complete with a 'Chimney' Style Lightwell
- No Vendor Chain
- Ideal First Time Home or Investment



### Entrance Hallway

Complete with ceiling spotlights, wall mounted radiator and carpet flooring.

### Lounge/Diner

23' 4" x 8' 1" (7.12m x 2.47m)

A spacious lounge diner complete with ceiling spotlights, wall mounted radiator and patio doors to the rear. Fitted with laminate flooring.

### Kitchen

12' 4" x 12' 2" (3.77m x 3.72m)

Featuring a modern range of wall and base units including an integral stainless steel sink, oven and electric hob. Complete with ceiling spotlights, lightwell and wall mounted radiator. Fitted with laminate flooring.

### Bedroom One

12' 2" x 8' 6" (3.71m x 2.58m)

Featuring a ceiling light point, lightwell and wall mounted radiator. Fitted with laminate flooring.

### Bedroom Two

8' 4" x 7' 10" (2.55m x 2.39m)

Complete with a ceiling light point, double glazed window and wall mounted radiator. Fitted with carpet flooring.

### Bathroom

6' 4" x 5' 0" (1.94m x 1.52m)

Featuring a tree piece suite including a 'sunken' bath, hand wash basin and W.C. Complete with ceiling spotlights and heated towel rail.

### External

To the rear of the property is a decked patio.



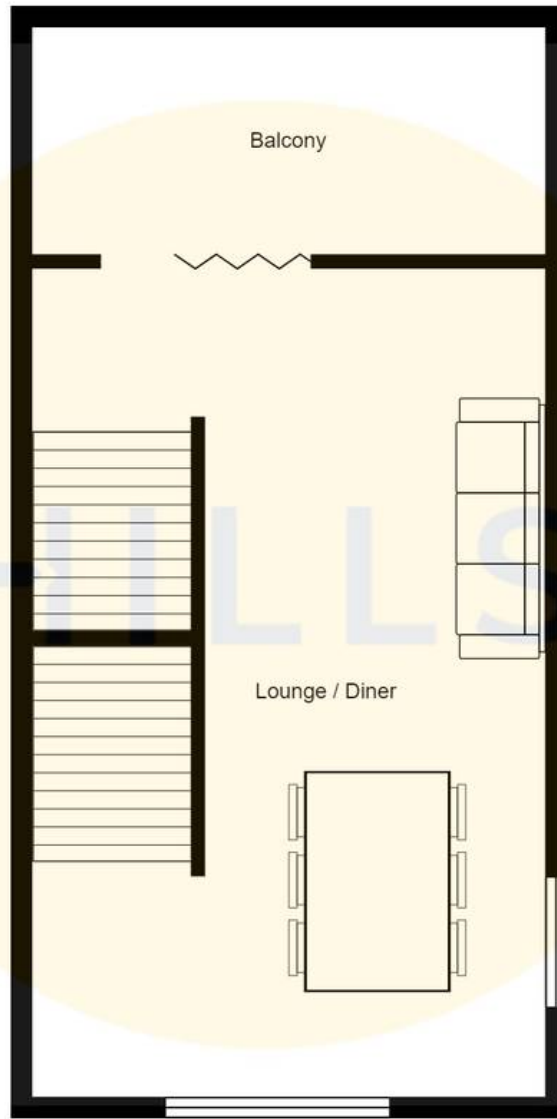
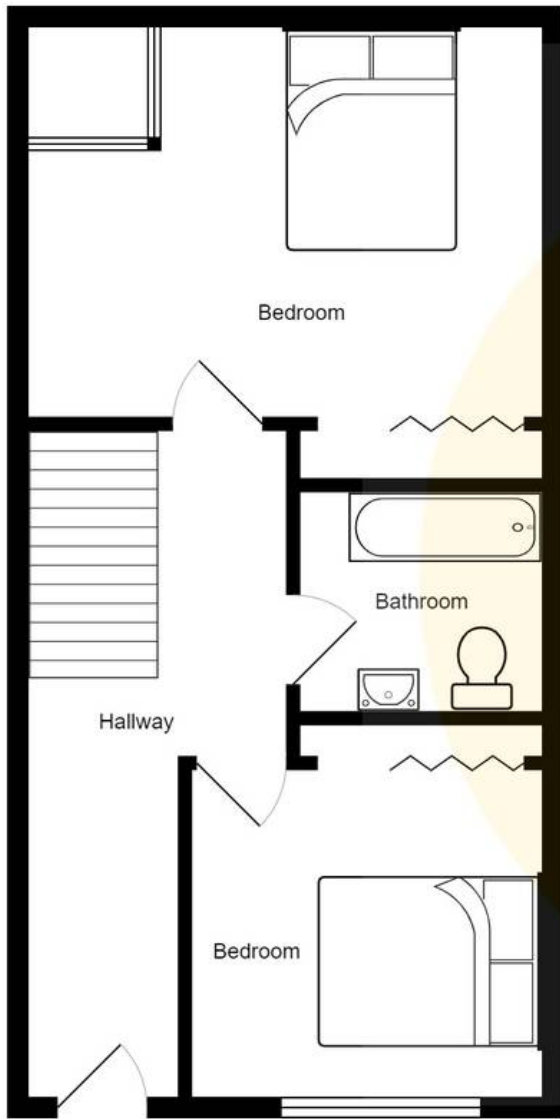
HILLS





HILLS







## Hills | Salfords Estate Agent

Hills Residential, Sentinel House Albert Street – M30 0SS

0161 707 4900

[sales@hills.agency](mailto:sales@hills.agency)

[www.hills.agency/](http://www.hills.agency/)



THE PROPERTY MISDESCRIPTIONS ACT 1991 The Agent has not tested any apparatus, equipment, fixtures and fittings or services and so cannot verify that they are in working order or fit for the purpose. A Buyer is advised to obtain verification from their Solicitor or Surveyor. References to the Tenure of a Property are based on information supplied by the Seller. The Agent has not had sight of the title documents. A Buyer is advised to obtain verification from their Solicitor. You are advised to check the availability of this property before travelling any distance to view. Every effort and precaution has been made to ensure these particulars are correct and not misleading but their accuracy is not guaranteed nor do they form part of any contract. If there is any point which is of particular importance to you, please contact us and we will provide any information you require. This is advisable, particularly if you intend to travel some distance to view the property. The mention of any appliances and services within these details does not imply that they are in full and efficient working order. These particulars are in draft form awaiting Vendors confirmation of their accuracy. These details must therefore be taken as a guide only.