



Alma Street, Tyldesley

Manchester



£160,000

7 Alma Street

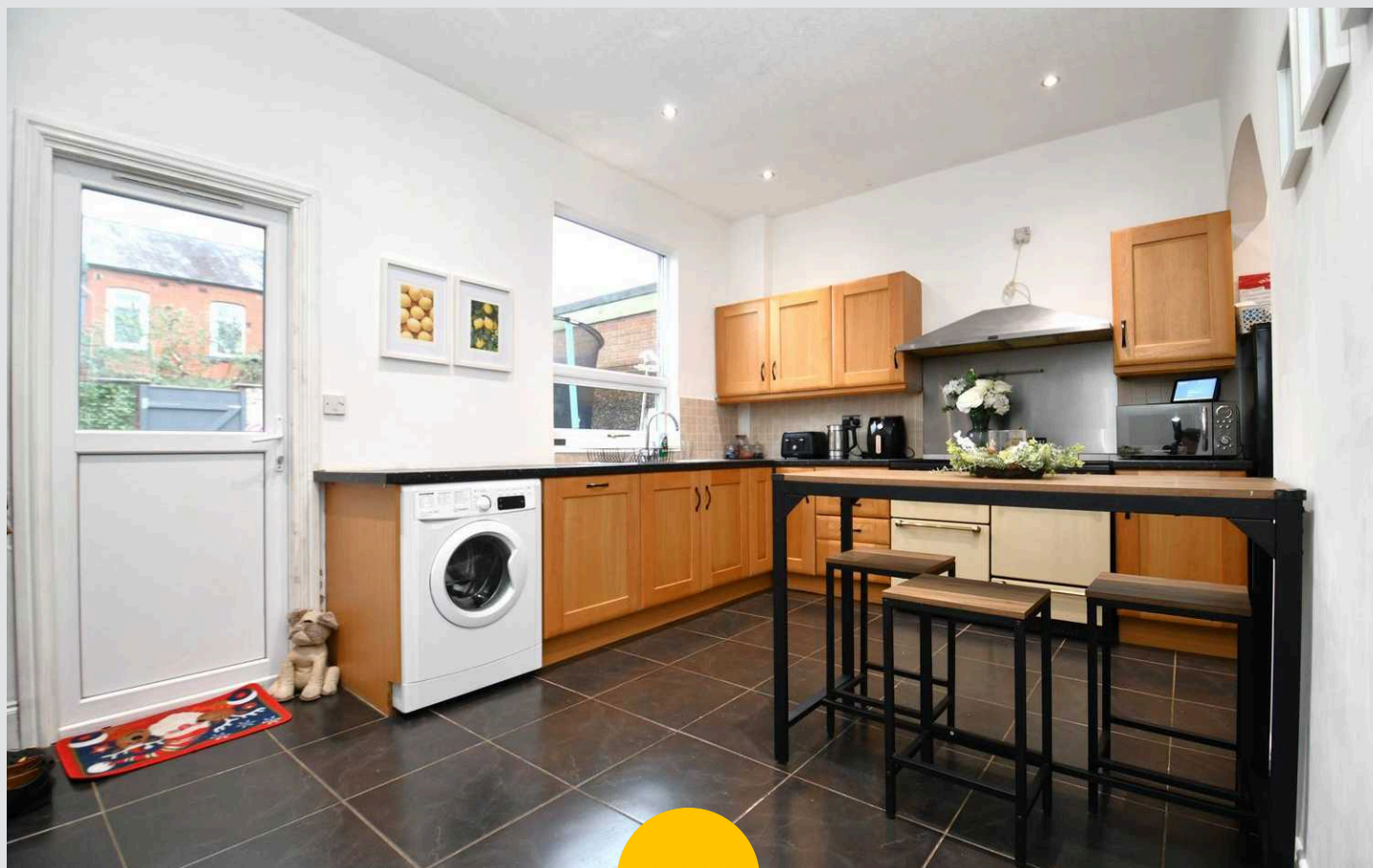
Tyldesley, Manchester

A **STYLISH**, two bedroom terraced property located just a short walk from Tyldesley High Street! Featuring generously-sized bedrooms, a modern kitchen diner and a spacious lounge!

Council Tax band: A

Tenure: Leasehold

- Lovely Two Bedroom Terraced Property
- Situated in a Convenient Location, Just a Short Walk from Tyldesley High Street
- Spacious Lounge with a Feature Panelled Wall
- Bright and Airy Kitchen Diner
- Two Generously-Sized Double Bedrooms
- Stylish Three-Piece Bathroom
- Generously-Sized Yard to the Rear with Artificial Grass and Paving
- Ideal First Time Home or Investment
- Close to the Guided Busway, which Provides Access into Manchester City Centre
- Viewing is **HIGHLY** Recommended!



HILLS



Porch

Ceiling light point

Lounge

14' 11" x 14' 2" (4.55m x 4.33m)

Ceiling light point, double-glazed bay window and a wall-mounted radiator

Kitchen Diner

14' 11" x 10' 2" (4.55m x 3.09m)

Fitted with a range of wall and base units with complementary work surfaces and integrated sink and drainer unit. Space for freestanding oven and a washing machine. Ceiling spotlights, double glazed window and a wall mounted radiator. Further storage space underneath the stairs

Landing

Ceiling light point

Bedroom One

14' 11" x 11' 5" (4.56m x 3.49m)

Ceiling light point, double-glazed bay window and a wall-mounted radiator

Bedroom Two

16' 2" x 7' 4" (4.92m x 2.23m)

Two ceiling light points, a double-glazed window and a wall-mounted radiator

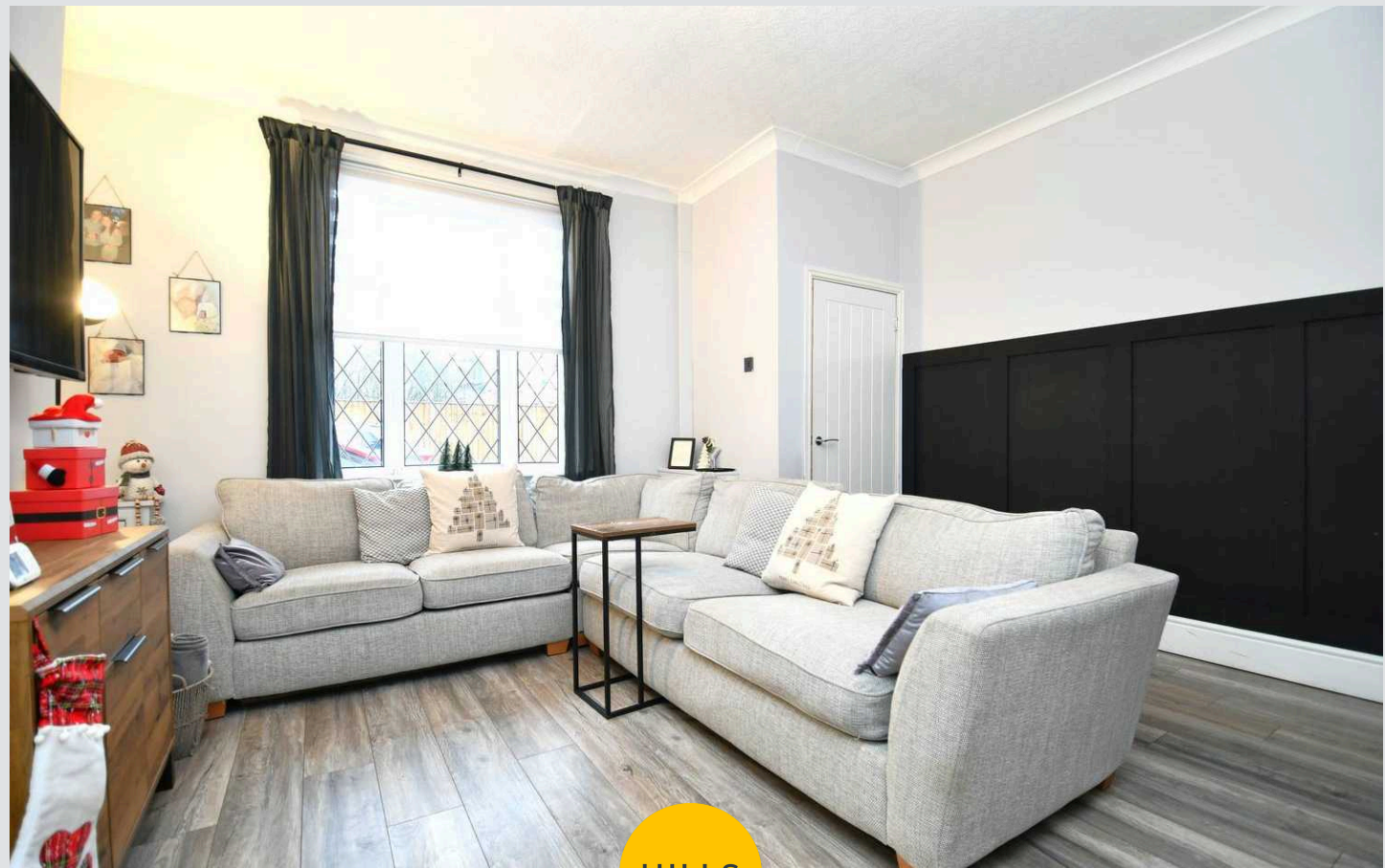
Bathroom

10' 2" x 7' 3" (3.11m x 2.22m)

Fitted with a modern three-piece suite, including a hand wash basin, WC and bath with a shower over. Ceiling spotlights, a double-glazed window and a heated towel rail

Externally

Generous yard to the rear with artificial grass and paving



Porch

Ceiling light point

Lounge

14' 11" x 14' 2" (4.55m x 4.33m)

Ceiling light point, double-glazed bay window and a wall-mounted radiator

Kitchen Diner

14' 11" x 10' 2" (4.55m x 3.09m)

Fitted with a range of wall and base units with complementary work surfaces and integrated sink and drainer unit. Space for freestanding oven and a washing machine. Ceiling spotlights, double glazed window and a wall mounted radiator. Further storage space underneath the stairs

Landing

Ceiling light point

Bedroom One

14' 11" x 11' 5" (4.56m x 3.49m)

Ceiling light point, double-glazed bay window and a wall-mounted radiator

Bedroom Two

16' 2" x 7' 4" (4.92m x 2.23m)

Two ceiling light points, a double-glazed window and a wall-mounted radiator

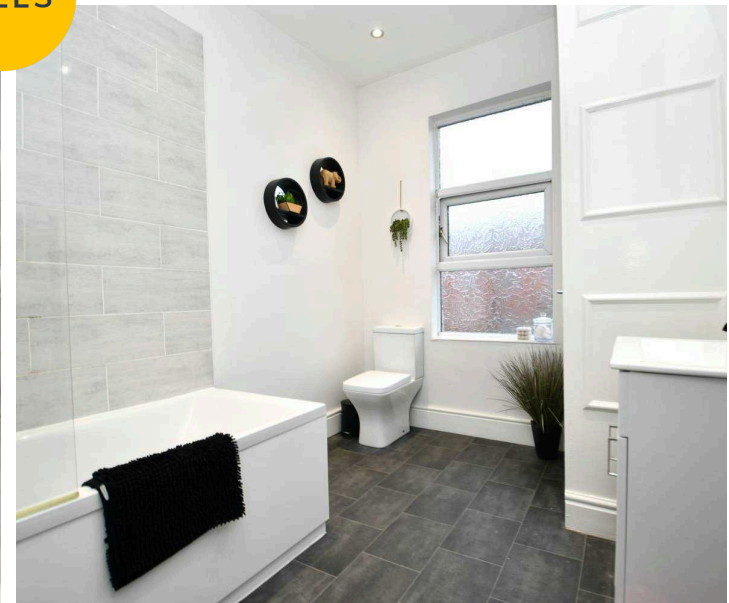
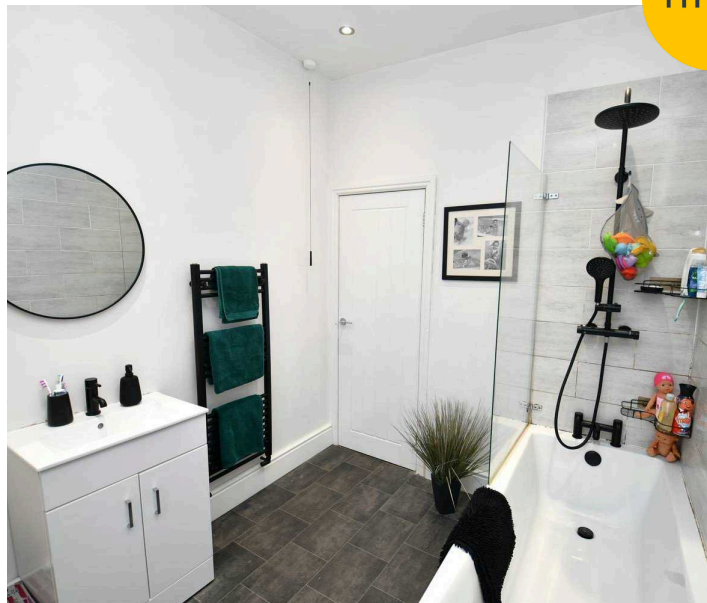
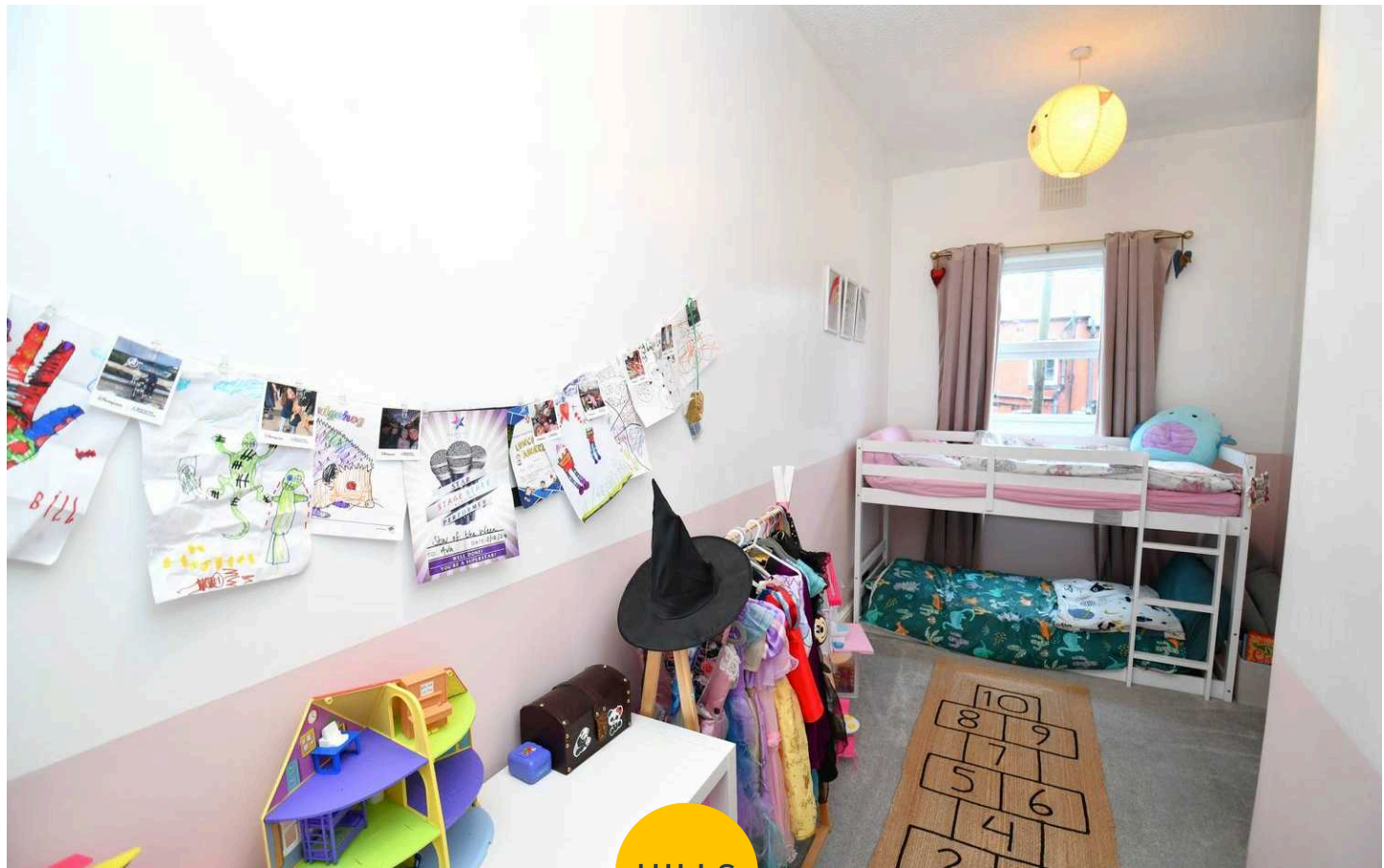
Bathroom

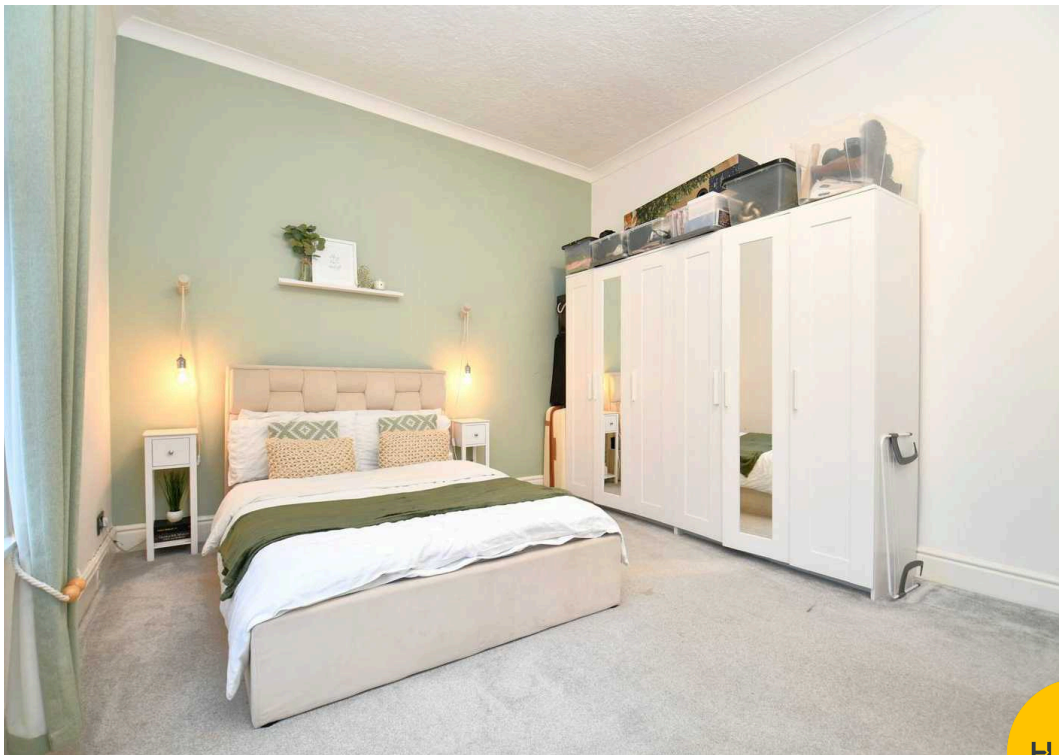
10' 2" x 7' 3" (3.11m x 2.22m)

Fitted with a modern three-piece suite, including a hand wash basin, WC and bath with a shower over. Ceiling spotlights, a double-glazed window and a heated towel rail

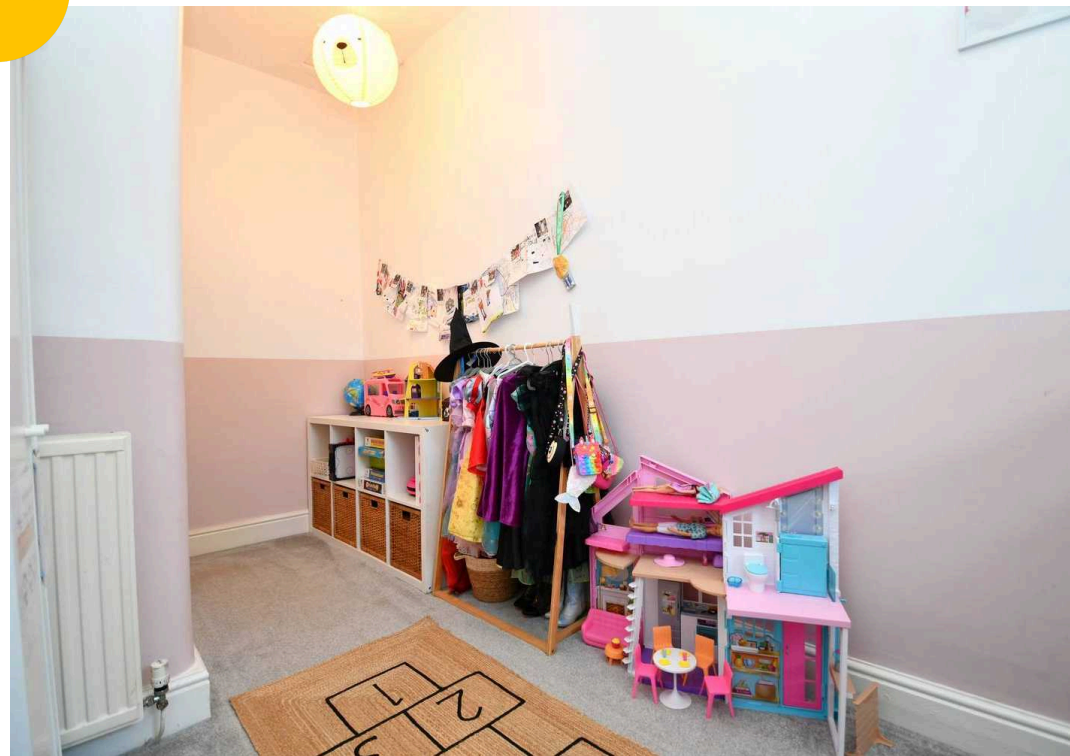
Externally

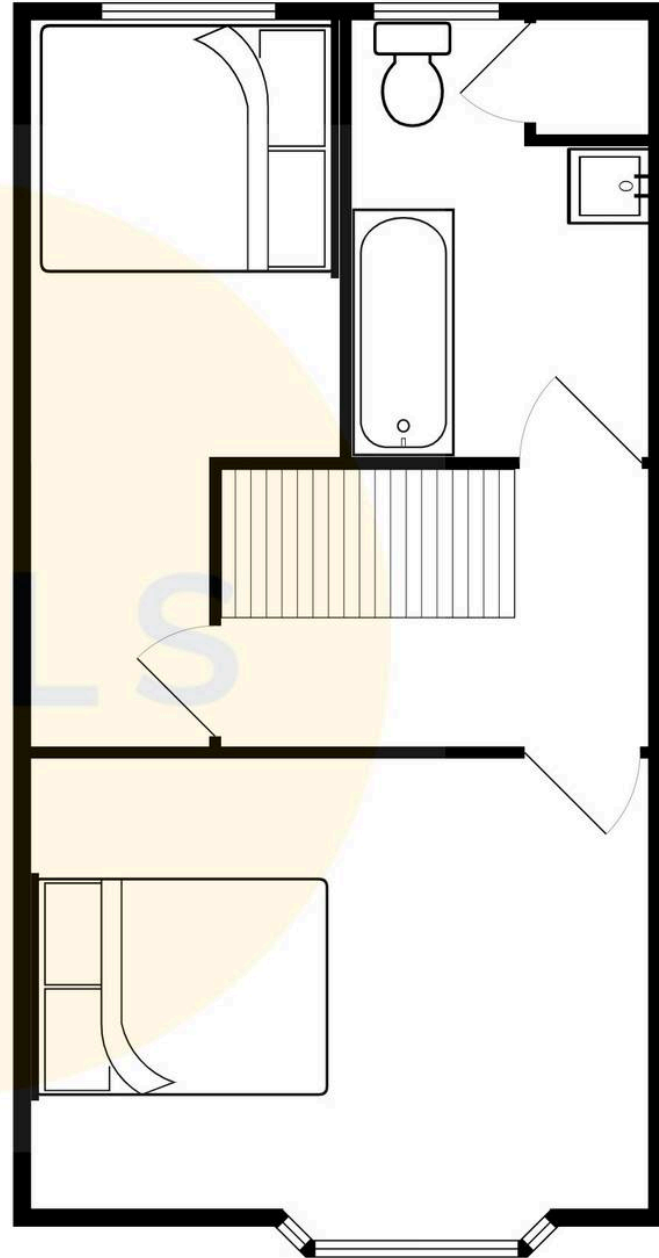
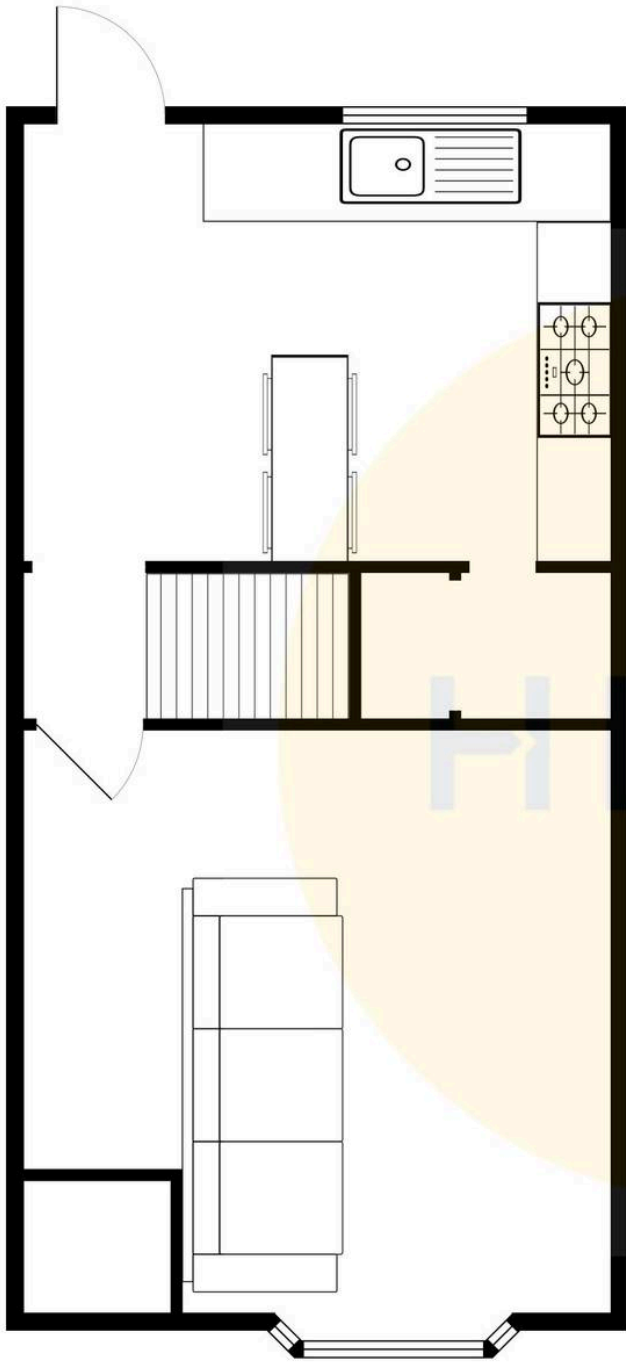
Generous yard to the rear with artificial grass and paving

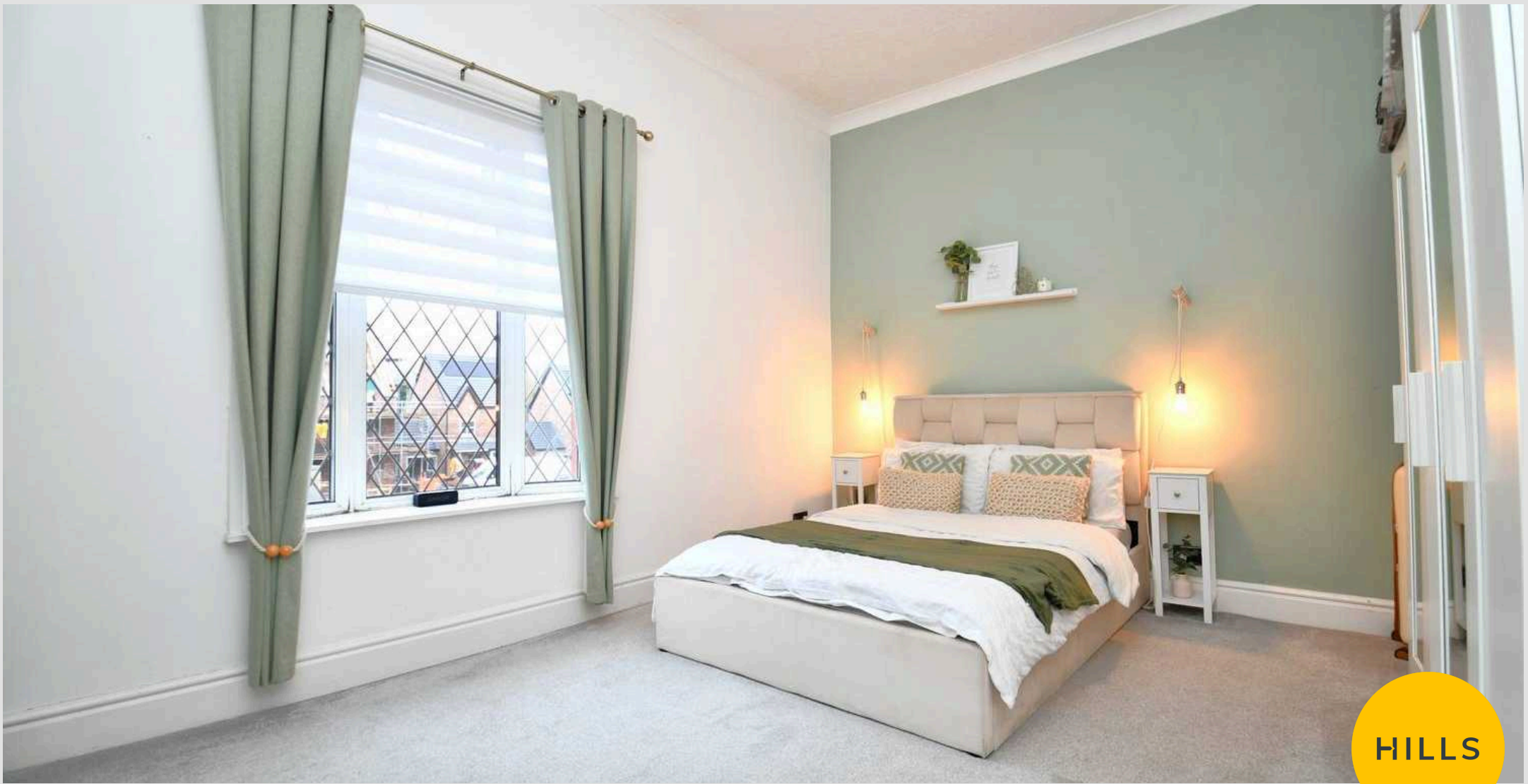




HILLS







Hills | Salfords Estate Agent

Hills Residential, Sentinel House Albert Street – M30 0SS

0161 707 4900

sales@hills.agency

www.hills.agency/



THE PROPERTY MISDESCRIPTIONS ACT 1991 The Agent has not tested any apparatus, equipment, fixtures and fittings or services and so cannot verify that they are in working order or fit for the purpose. A Buyer is advised to obtain verification from their Solicitor or Surveyor. References to the Tenure of a Property are based on information supplied by the Seller. The Agent has not had sight of the title documents. A Buyer is advised to obtain verification from their Solicitor. You are advised to check the availability of this property before travelling any distance to view. Every effort and precaution has been made to ensure these particulars are correct and not misleading but their accuracy is not guaranteed nor do they form part of any contract. If there is any point which is of particular importance to you, please contact us and we will provide any information you require. This is advisable, particularly if you intend to travel some distance to view the property. The mention of any appliances and services within these details does not imply that they are in full and efficient working order. These particulars are in draft form awaiting Vendors confirmation of their accuracy. These details must therefore be taken as a guide only.