



De La Salle Way, Salford

Salford



£350,000



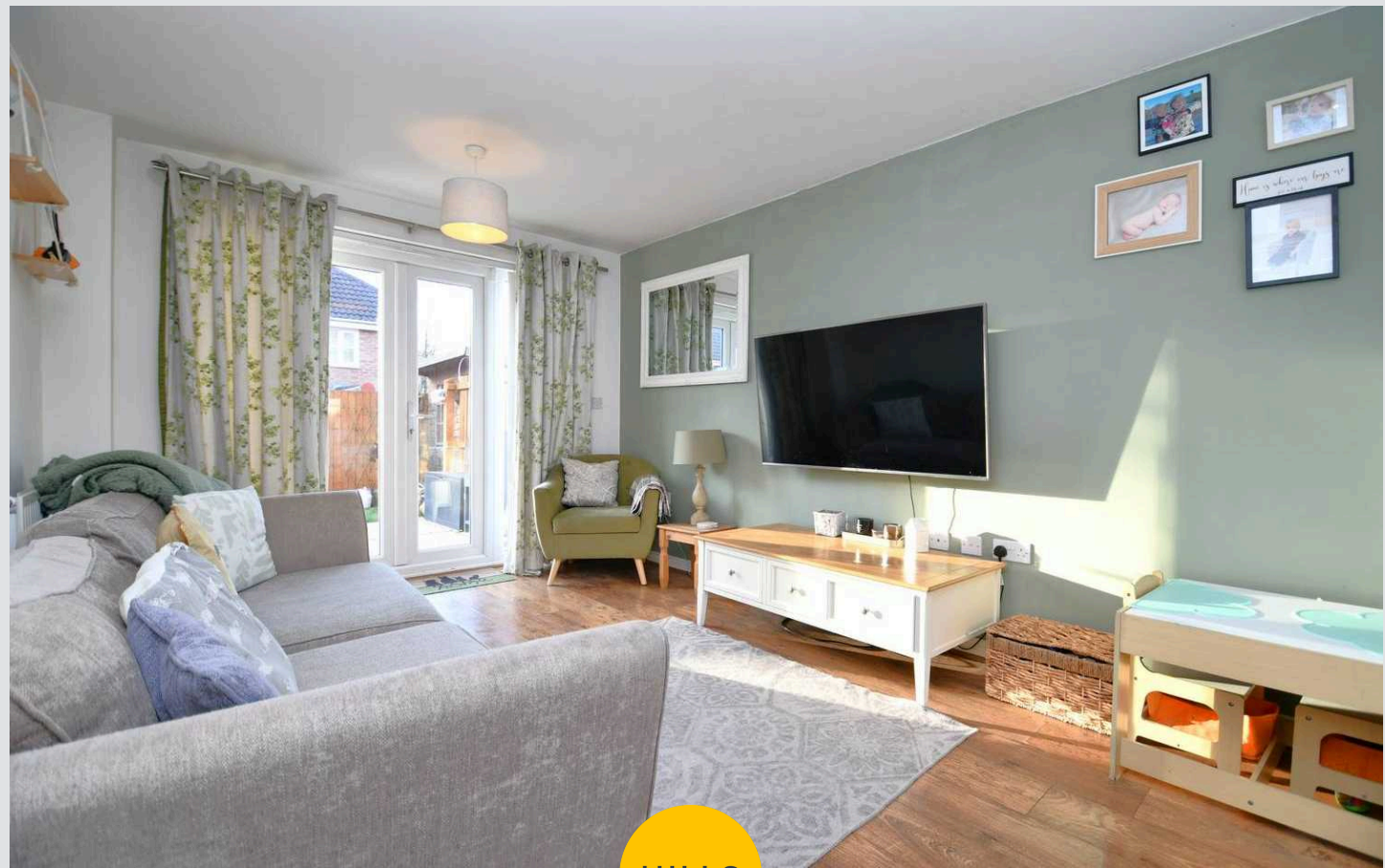
# 9 De La Salle Way

Salford, Salford

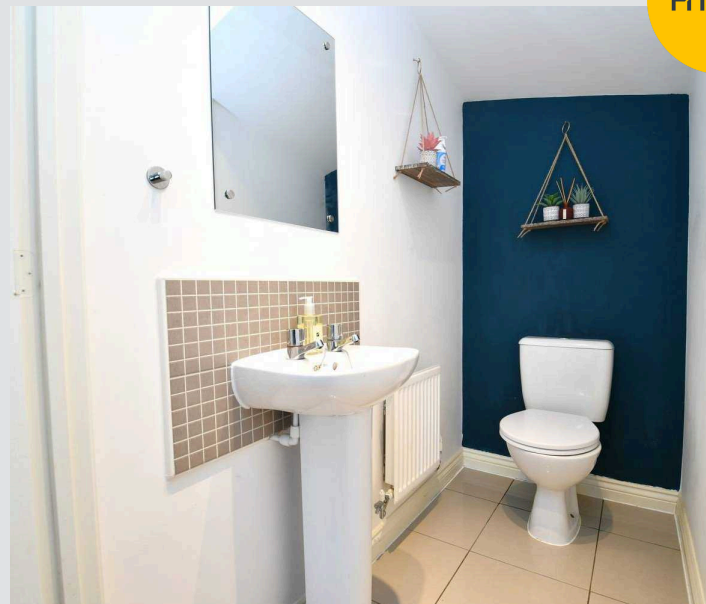
Nestled within a sought-after residential development just moments away from the picturesque Buile Hill Park, this modern three-bedroom detached property has a lot to offer! Council Tax band: C

Tenure: Leasehold

- Modern Three Bedroom Detached Property
- Located on a Popular Residential Development, Just a Stone's Throw from Buile Hill Park
- Spacious Lounge and a Downstairs W/C
- Modern Kitchen Diner and a Stylish Three-Piece Family Bathroom
- Three Well-Proportioned Bedrooms
- Main Bedroom Complete with an Ensuite Shower Room
- Driveway to the Side for Off-Road Parking
- Generously-Sized Garden to the Rear with Laid-to-Lawn Grass and Paving
- Close to Excellent Transport Links into Salford Quays, Media City and Manchester City Centre
- Within Easy Access of Salford Royal Hospital, Early Viewing is Advised!



HILLS





### Landing

Ceiling spotlights and a wall-mounted radiator

### Bedroom One

12' 5" x 10' 1" (3.79m x 3.07m)

Ceiling light point, double-glazed window and a wall-mounted radiator

### Ensuite

10' 1" x 3' 11" (3.07m x 1.19m)

Ceiling spotlights, double glazed window, hand wash basin, WC and shower.

### Bedroom Two

10' 0" x 9' 4" (3.04m x 2.85m)

Ceiling light point, double-glazed window and a wall-mounted radiator

### Bedroom Three

10' 0" x 7' 0" (3.04m x 2.14m)

Ceiling light point, double-glazed window and a wall-mounted radiator

### Externally

Driveway to the side for off-road parking. Generously-sized south-west facing garden to the rear with laid-to-lawn grass



HILLS





### Entrance Hallway

Ceiling light point and a wall-mounted radiator

### Downstairs W/C

6' 0" x 3' 3" (1.84m x 0.99m)

Ceiling spotlights, W/C and a hand wash basin

### Lounge

16' 8" x 9' 11" (5.09m x 3.01m)

Two ceiling light points, double-glazed window, wall-mounted radiator and patio doors

### Kitchen Diner

16' 7" x 9' 11" (5.05m x 3.01m)

Fitted with a range of wall and base units with complementary work surfaces and integrated sink and drainer unit. Integrated oven and hob, space for a fridge freezer and a dishwasher. Two ceiling light points, double glazed windows and a wall mounted radiator



HILLS





**Downstairs W/C**

6' 0" x 3' 3" (1.84m x 0.99m)

Ceiling spotlights, W/C and a hand wash basin

**Lounge**

16' 8" x 9' 11" (5.09m x 3.01m)

Two ceiling light points, double-glazed window, wall-mounted radiator and patio doors

**Kitchen Diner**

16' 7" x 9' 11" (5.05m x 3.01m)

Fitted with a range of wall and base units with complementary work surfaces and integrated sink and drainer unit. Integrated oven and hob, space for a fridge freezer and a dishwasher. Two ceiling light points, double glazed windows and a wall mounted radiator

**Bedroom One**

12' 5" x 10' 1" (3.79m x 3.07m)

Ceiling light point, double-glazed window and a wall-mounted radiator

**Ensuite**

10' 1" x 3' 11" (3.07m x 1.19m)

Ceiling spotlights, double glazed window, hand wash basin, WC and shower.

**Bedroom Two**

10' 0" x 9' 4" (3.04m x 2.85m)

Ceiling light point, double-glazed window and a wall-mounted radiator

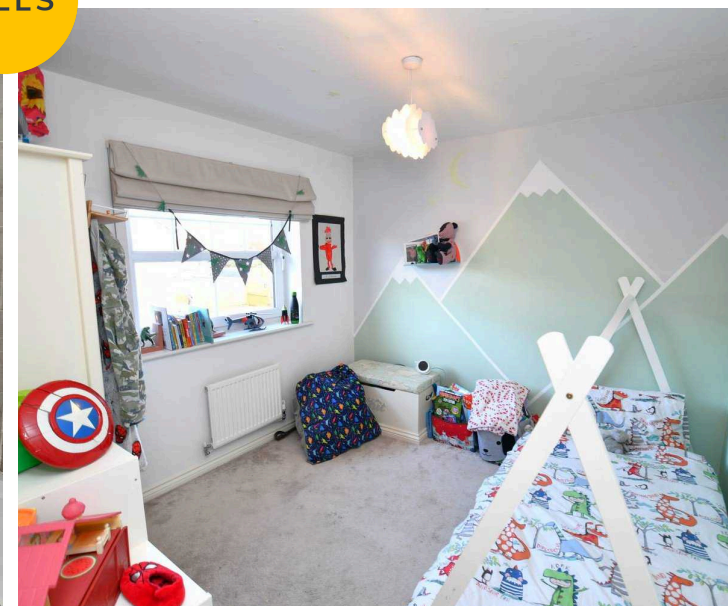
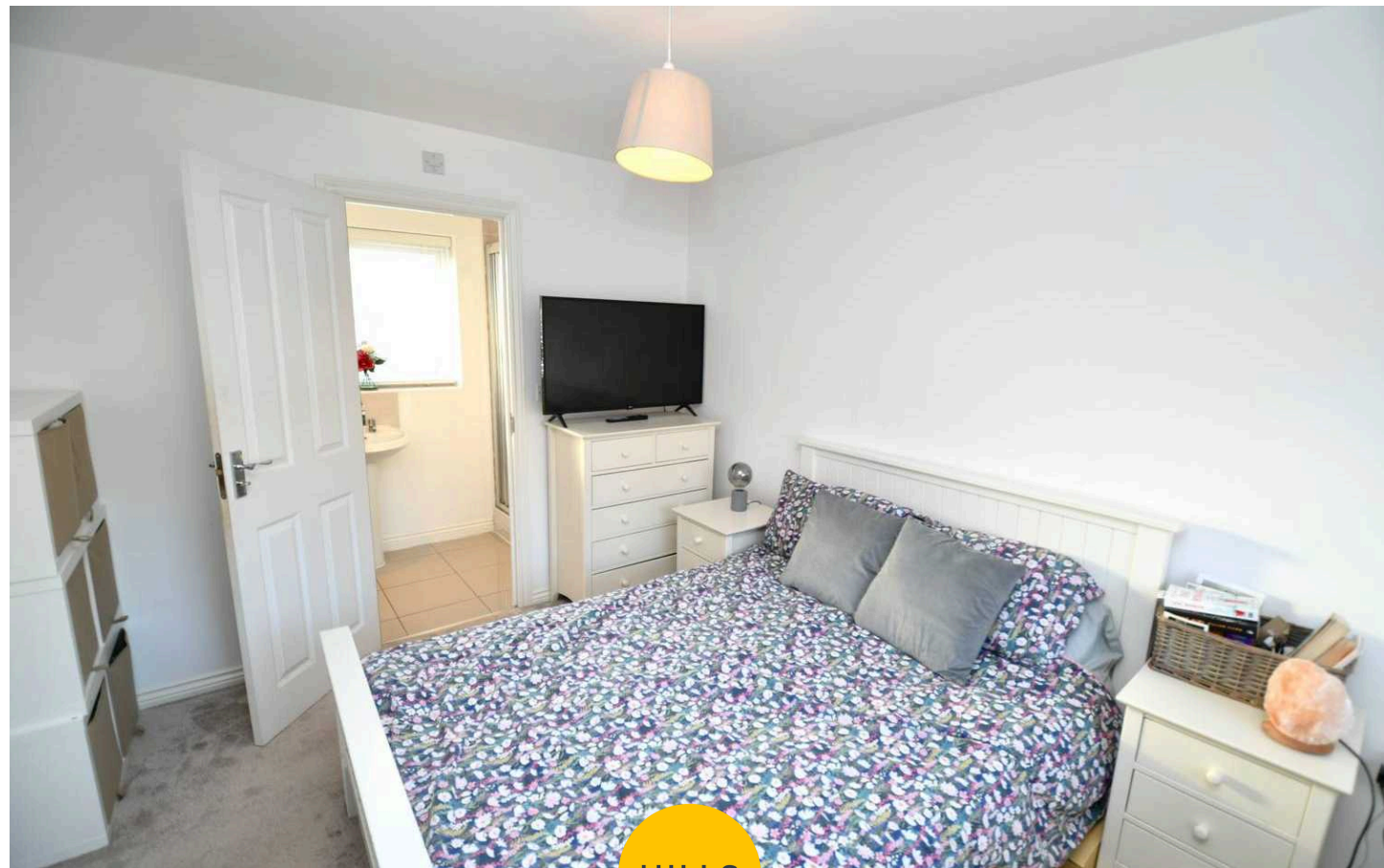
**Bedroom Three**

10' 0" x 7' 0" (3.04m x 2.14m)

Ceiling light point, double-glazed window and a wall-mounted radiator

**Externally**

Driveway to the side for off-road parking. Generously-sized south-west facing garden to the rear with laid-to-lawn grass



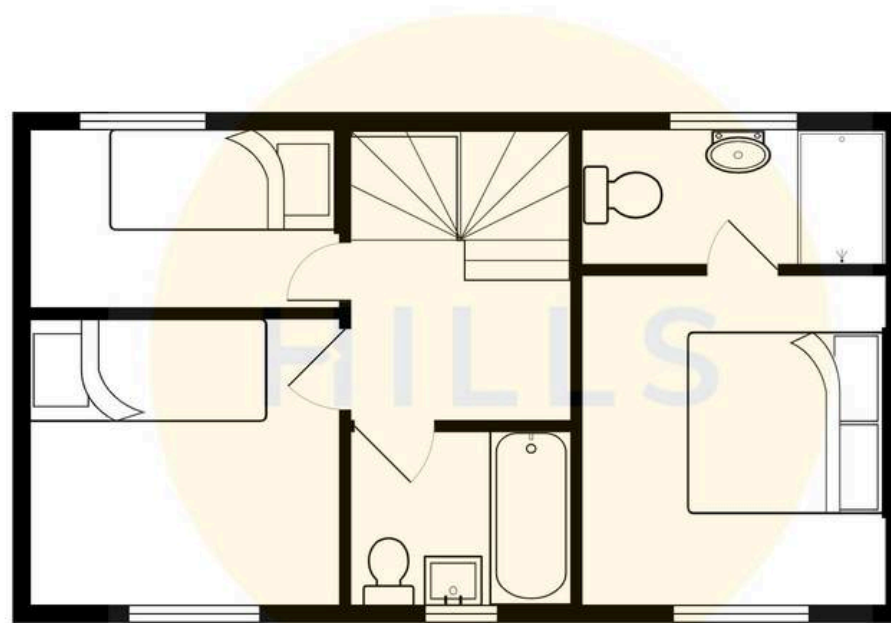




HILLS









## Hills | Salfords Estate Agent

Hills Residential, Sentinel House Albert Street – M30 0SS

0161 707 4900

[sales@hills.agency](mailto:sales@hills.agency)

[www.hills.agency/](http://www.hills.agency/)



THE PROPERTY MISDESCRIPTIONS ACT 1991 The Agent has not tested any apparatus, equipment, fixtures and fittings or services and so cannot verify that they are in working order or fit for the purpose. A Buyer is advised to obtain verification from their Solicitor or Surveyor. References to the Tenure of a Property are based on information supplied by the Seller. The Agent has not had sight of the title documents. A Buyer is advised to obtain verification from their Solicitor. You are advised to check the availability of this property before travelling any distance to view. Every effort and precaution has been made to ensure these particulars are correct and not misleading but their accuracy is not guaranteed nor do they form part of any contract. If there is any point which is of particular importance to you, please contact us and we will provide any information you require. This is advisable, particularly if you intend to travel some distance to view the property. The mention of any appliances and services within these details does not imply that they are in full and efficient working order. These particulars are in draft form awaiting Vendors confirmation of their accuracy. These details must therefore be taken as a guide only.