

Gladstone Road, Eccles

Manchester



£250,000

Gladstone Road

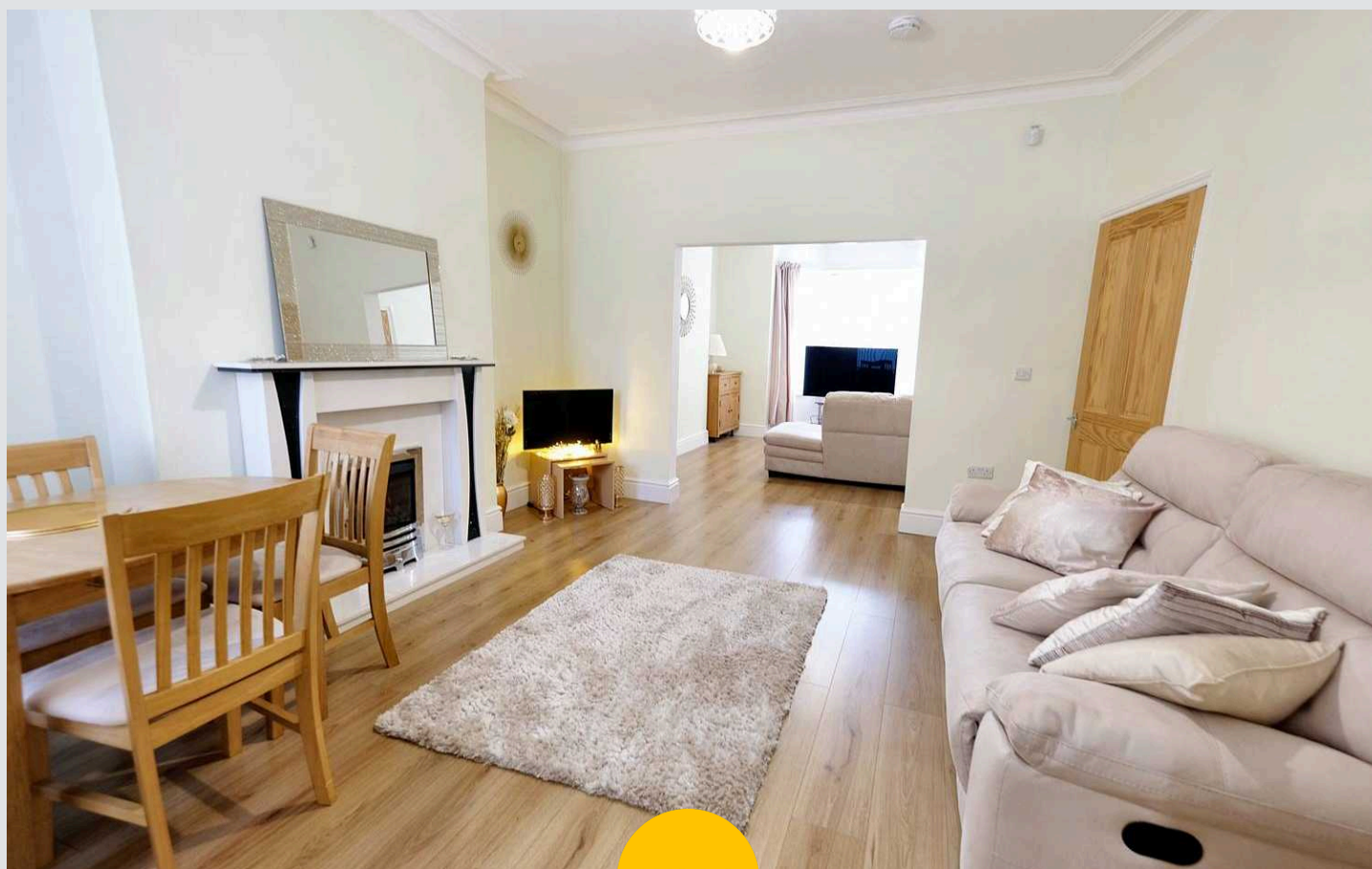
Eccles, Manchester

Exceptional period property in sought-after residential area near Monton Village. Bay-fronted lounge, open plan living, modern kitchen, three double bedrooms, en suite, three piece bathroom suite. Convenient location with local amenities and transport links. Blend of charm and contemporary living.

Council Tax band: B

Tenure: Freehold

- Bay Fronted Lounge & Second Reception Room (Open Plan)
- Spacious Fitted Kitchen & Dining Space
- Three Generous Double Bedrooms
- Three Piece Bathroom Suite & En Suite to the Master Bedroom
- Low Maintenance Yard to the Rear
- Perfectly Located Close to Brilliant Local Amenities, Sought after Schooling & Transport Links
- Beautiful Period Property Positioned just a Short Walk from Monton Village



HILLS



Reception Room One

14' 11" x 12' 1" (4.54m x 3.69m)

Complete with a ceiling light point, double glazed bay window and vertical wall mounted radiator. Fitted with laminate flooring.

Reception Room Two

13' 11" x 12' 9" (4.25m x 3.89m)

Featuring a gas fire. Complete with a ceiling light point, double glazed window and vertical wall mounted radiator. Fitted with laminate flooring.

Kitchen

18' 1" x 10' 0" (5.51m x 3.04m)

Featuring complementary wall and base units with integral cooker and hob. Space for a washing machine, dishwasher and fridge freezer. Complete with ceiling spotlights, double glazed window and vertical wall mounted radiator. Fitted with uPVC side door and laminate flooring.

Downstairs W.C.

2' 8" x 7' 0" (0.81m x 2.14m)

Featuring a hand wash basin and W.C. Complete with a ceiling light point, wall mounted radiator and laminate flooring.

Landing

Complete with a ceiling light point and carpet flooring.

Bedroom One

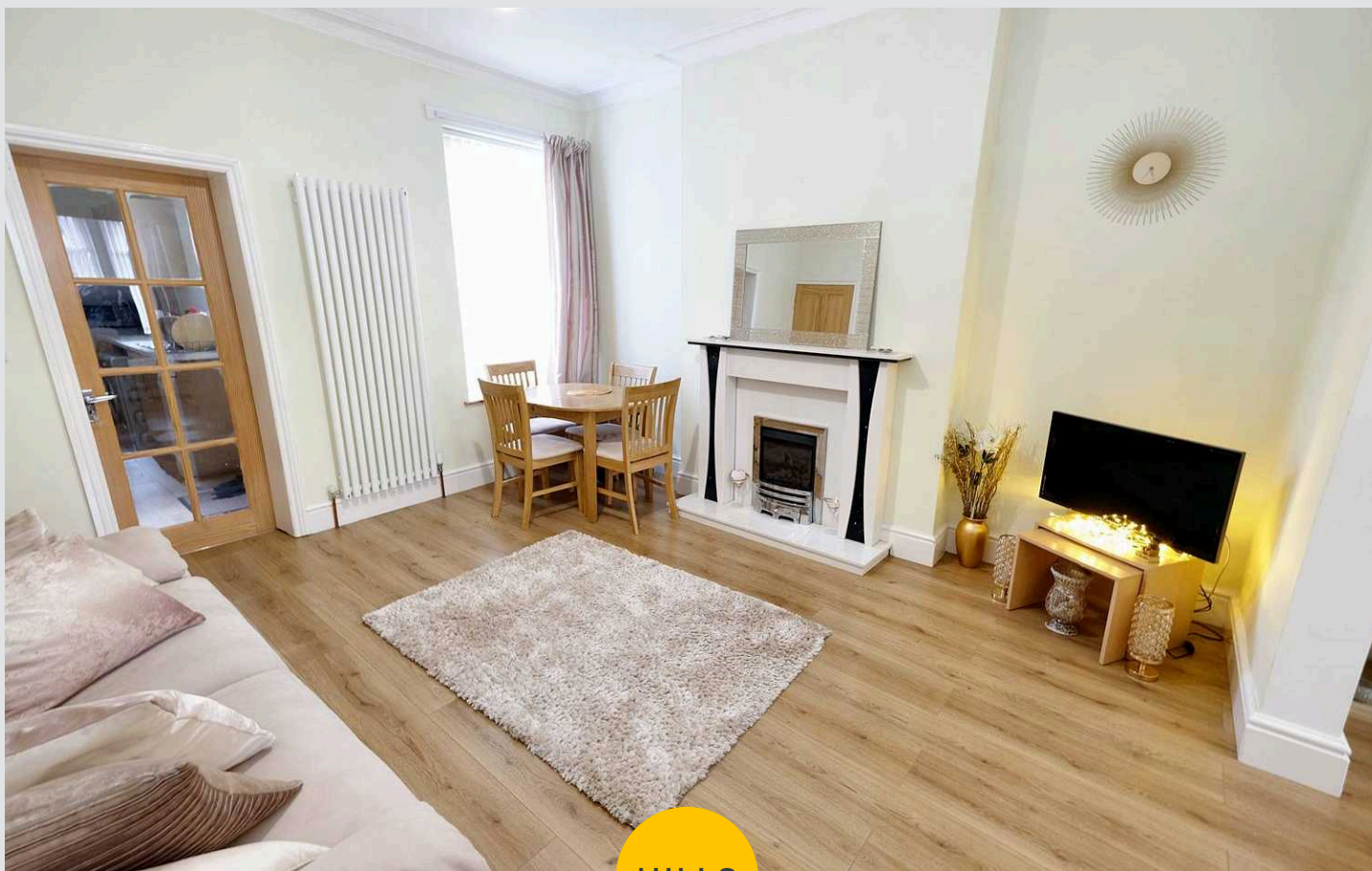
12' 1" x 12' 7" (3.68m x 3.84m)

Complete with a ceiling light point, two double glazed windows and two wall mounted radiators. Fitted with cushioned flooring.

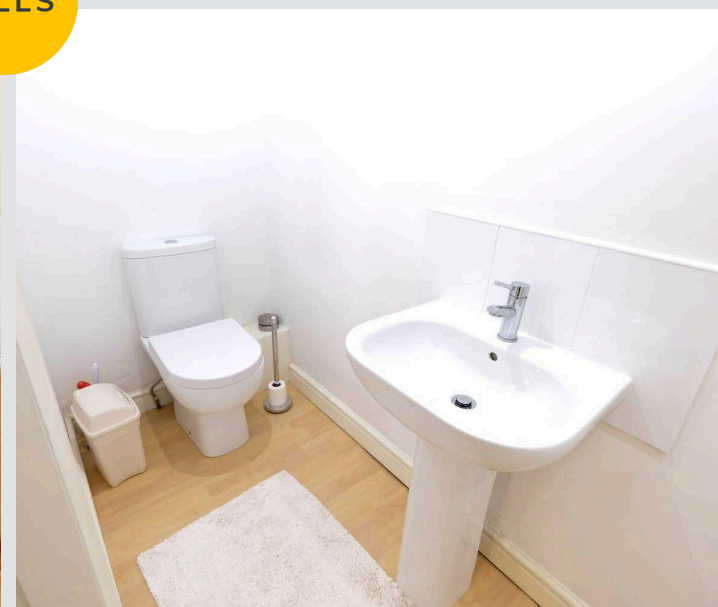
En suite

11' 11" x 3' 3" (3.63m x 0.99m)

Featuring a three piece suite including a shower, hand wash basin and W.C. Complete with ceiling spotlights and lino flooring.



HILLS



Bedroom Two

14' 0" x 10' 6" (4.26m x 3.21m)

Complete with a ceiling light point, double glazed window and carpet flooring.

Bedroom Three

10' 0" x 11' 0" (3.06m x 3.35m)

Complete with a ceiling light point, double glazed window and wall mounted radiator. Fitted with carpet flooring.

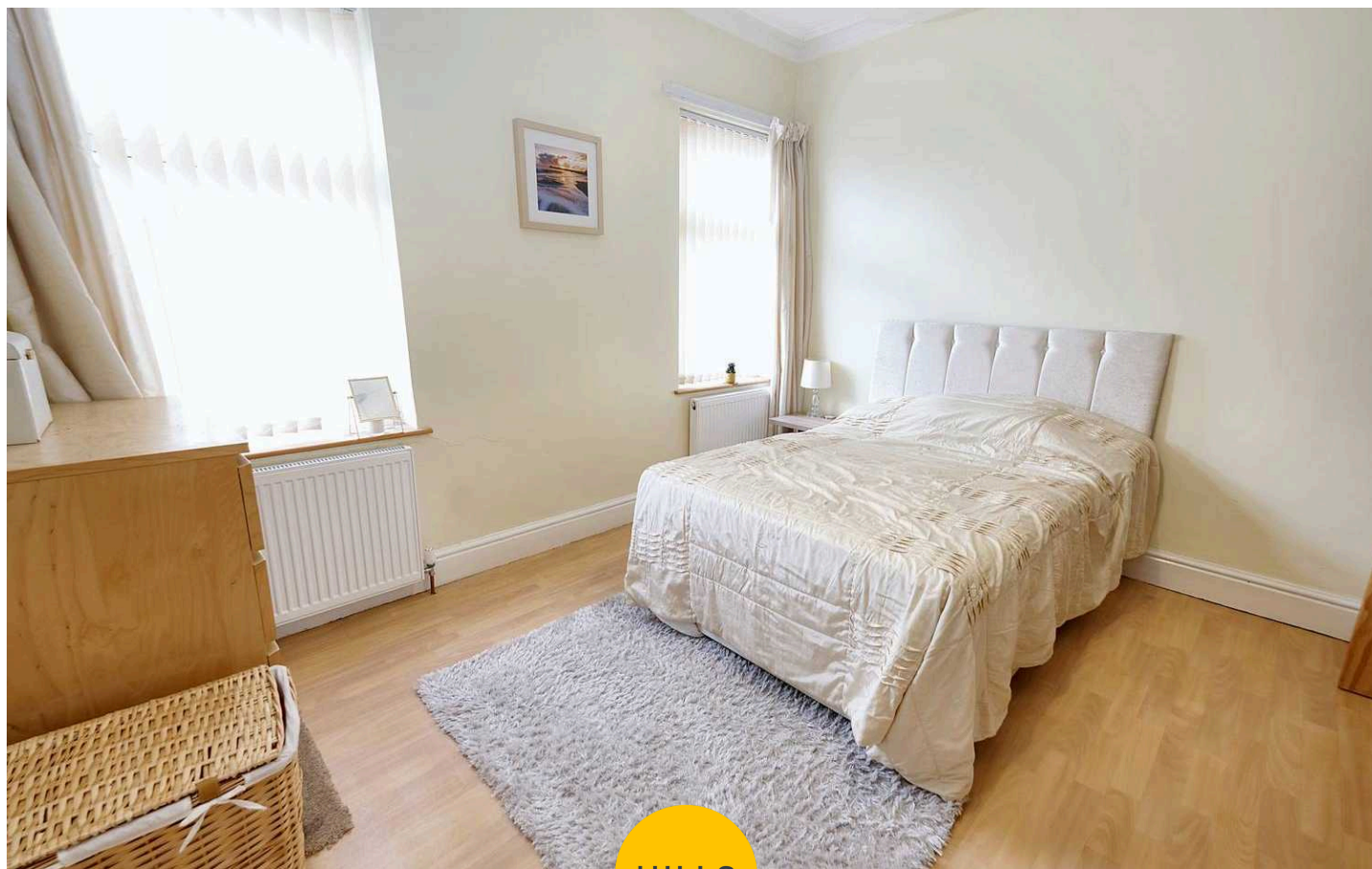
Bathroom

6' 10" x 6' 9" (2.09m x 2.05m)

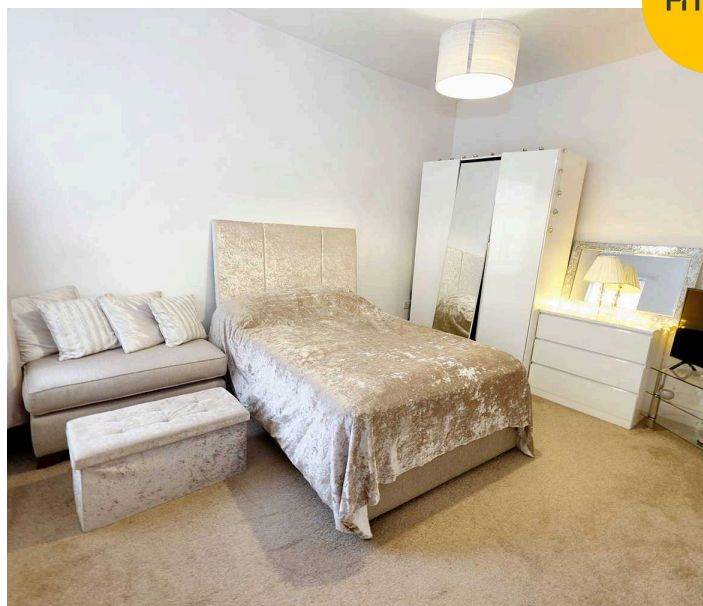
Featuring a three piece suite including a bath with shower over, hand wash basin and W.C. Complete with a ceiling light point, double glazed window, tiled walls and flooring.

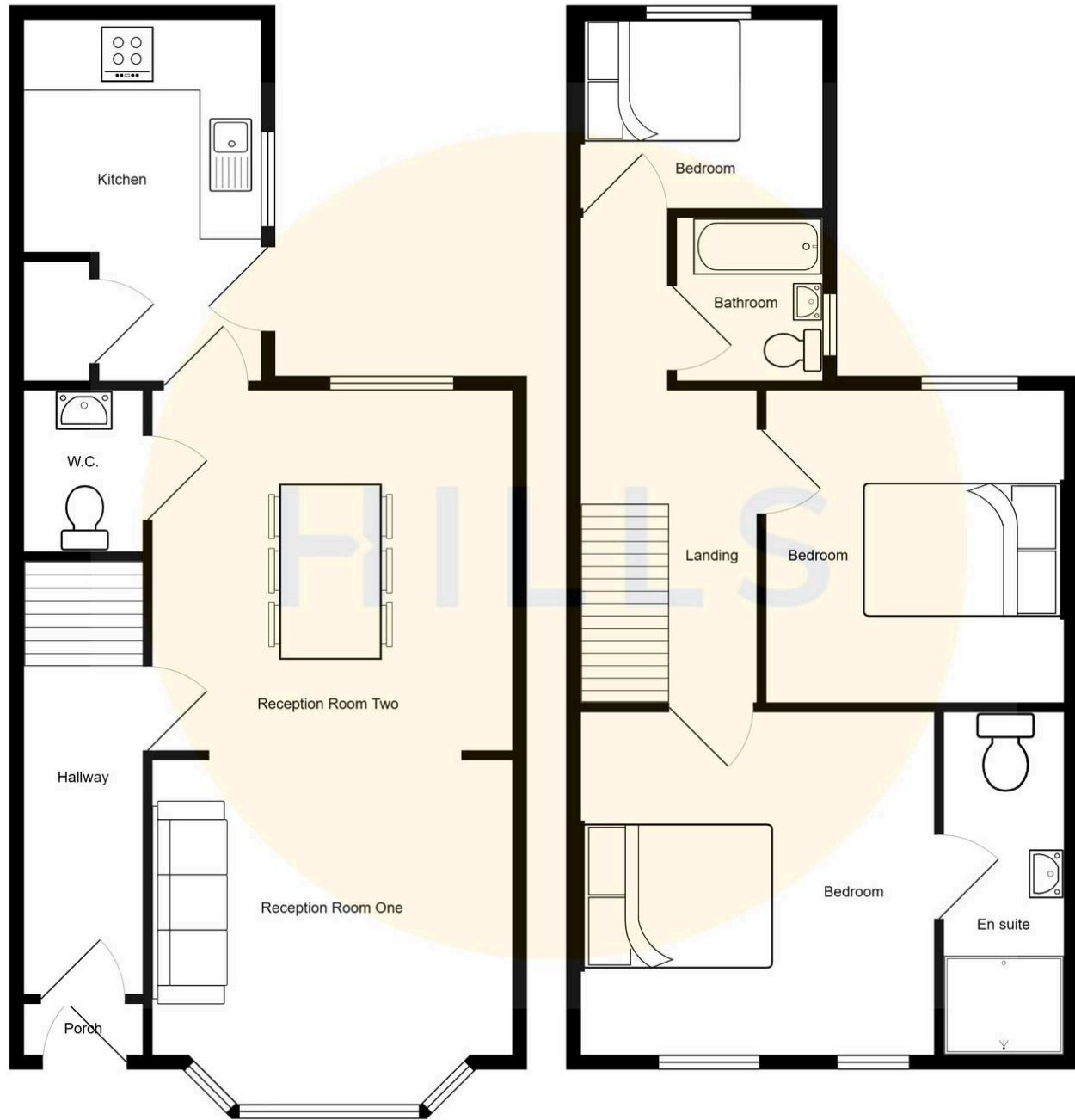
External

To the front and rear of the property are low maintenance paved gardens.



HILLS







Hills | Salfords Estate Agent

Hills Residential, Sentinel House Albert Street - M30 0SS

0161 707 4900

sales@hills.agency

www.hills.agency/



THE PROPERTY MISDESCRIPTIONS ACT 1991 The Agent has not tested any apparatus, equipment, fixtures and fittings or services and so cannot verify that they are in working order or fit for the purpose. A Buyer is advised to obtain verification from their Solicitor or Surveyor. References to the Tenure of a Property are based on information supplied by the Seller. The Agent has not had sight of the title documents. A Buyer is advised to obtain verification from their Solicitor. You are advised to check the availability of this property before travelling any distance to view. Every effort and precaution has been made to ensure these particulars are correct and not misleading but their accuracy is not guaranteed nor do they form part of any contract. If there is any point which is of particular importance to you, please contact us and we will provide any information you require. This is advisable, particularly if you intend to travel some distance to view the property. The mention of any appliances and services within these details does not imply that they are in full and efficient working order. These particulars are in draft form awaiting Vendors confirmation of their accuracy. These details must therefore be taken as a guide only.