



Hardy Street, Eccles

Manchester



Offers in Region of **£230,000**

Hardy Street

Eccles, Manchester

Charming three bed house boasting modern kitchen, spacious bedrooms & front and rear gardens. Conveniently located near amenities & transport links for easy living. The perfect first time buy.

Council Tax band: B

Tenure: Freehold

- The Perfect First Time Buy
- Excellently Located Close to Amenities & Brilliant Transport Links
- Spacious Lounge
- Modern Fitted Kitchen & Dining Space
- Three Generously Sized Bedrooms
- Three Piece Family Bathroom & Guest W.C.
- Gardens to the Front & Rear along with Off Road Parking for Multiple Cars



HILLS



Entrance Hallway

Entered via a composite front door. Complete with a ceiling light point, wall mounted radiator and carpet flooring.

Lounge

15' 2" x 13' 4" (4.62m x 4.06m)

Featuring a fire surround. Complete with a ceiling light point, double glazed window and wall mounted radiator. Fitted with carpet flooring.

Kitchen / Diner

Featuring complementary wall and base units with an integral stainless steel sink. Space for a fridge freezer, washing machine, electric oven and gas hob. Complete with ceiling spotlights, double glazed window, part tiled walls and lino flooring.

Downstairs W.C.

Featuring a two piece suite including a hand wash basin and W.C. Complete with a ceiling light point, double glazed window and wall mounted radiator. Fitted with lino flooring.

Landing

Complete with a ceiling light point, wall mounted radiator and carpet flooring.

Bedroom One

11' 7" x 9' 0" (3.53m x 2.74m)

Complete with a ceiling light point, double glazed window and wall mounted radiator. Fitted with carpet flooring.

Bedroom Two

9' 1" x 8' 1" (2.77m x 2.46m)

Complete with a ceiling light point, double glazed window and wall mounted radiator. Fitted with carpet flooring.

Bedroom Three

6' 8" x 6' 1" (2.03m x 1.85m)

Complete with a ceiling light point, double glazed window and wall mounted radiator. Fitted with carpet flooring.



HILLS



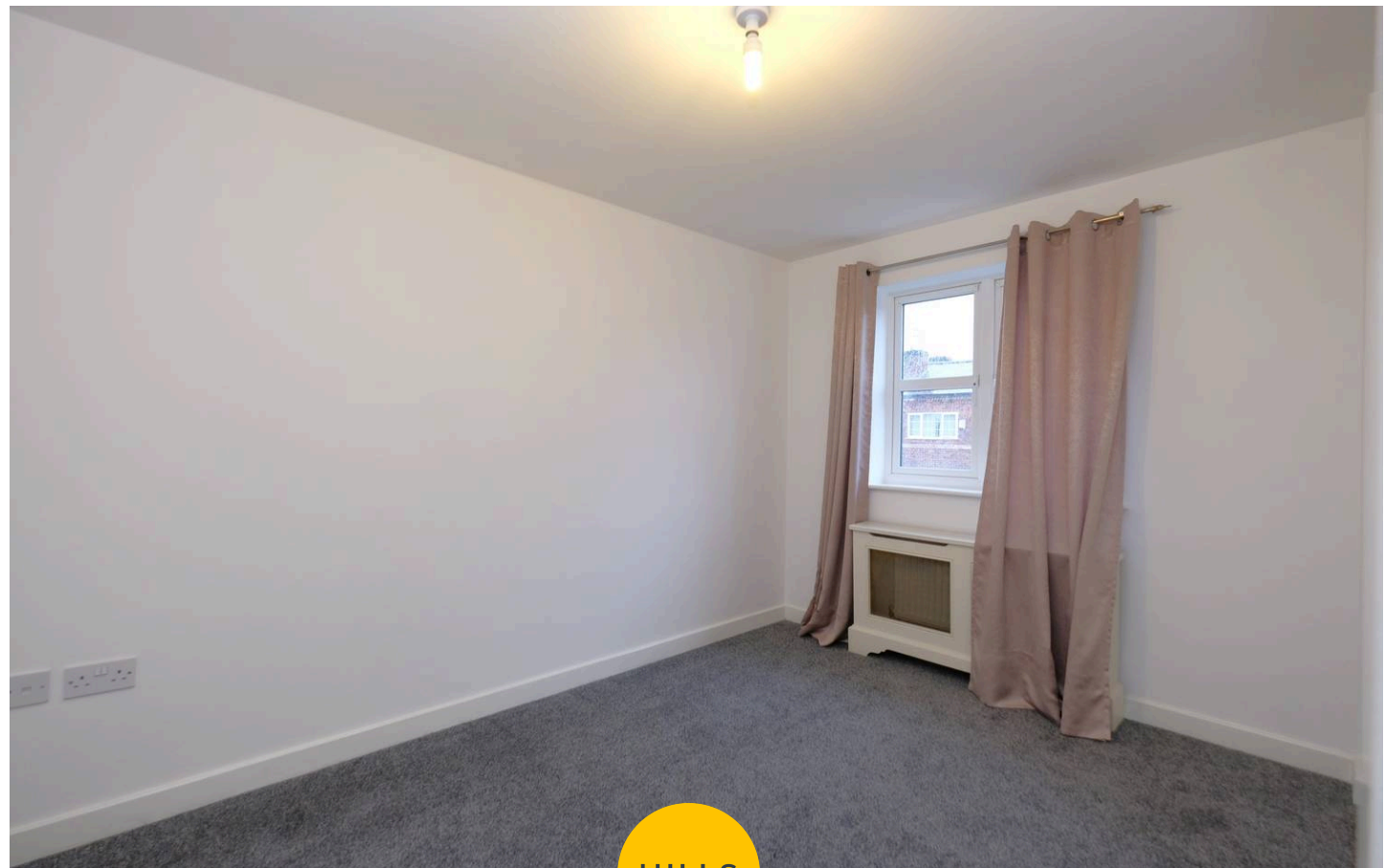
Bathroom

6' 8" x 6' 1" (2.03m x 1.85m)

Featuring a three piece suite including a bath with shower over, hand wash basin and W.C. Complete with a double glazed window, wall mounted radiator and lino.

External

To the front of the property is a block paved drive. To the rear of the property is a garden with paved patio, lawn and gated side access to the driveway.



HILLS







Hills | Salfords Estate Agent

Hills Residential, Sentinel House Albert Street – M30 0SS

0161 707 4900

sales@hills.agency

www.hills.agency/



THE PROPERTY MISDESCRIPTIONS ACT 1991 The Agent has not tested any apparatus, equipment, fixtures and fittings or services and so cannot verify that they are in working order or fit for the purpose. A Buyer is advised to obtain verification from their Solicitor or Surveyor. References to the Tenure of a Property are based on information supplied by the Seller. The Agent has not had sight of the title documents. A Buyer is advised to obtain verification from their Solicitor. You are advised to check the availability of this property before travelling any distance to view. Every effort and precaution has been made to ensure these particulars are correct and not misleading but their accuracy is not guaranteed nor do they form part of any contract. If there is any point which is of particular importance to you, please contact us and we will provide any information you require. This is advisable, particularly if you intend to travel some distance to view the property. The mention of any appliances and services within these details does not imply that they are in full and efficient working order. These particulars are in draft form awaiting Vendors confirmation of their accuracy. These details must therefore be taken as a guide only.