

Lansdowne Road, Eccles

Manchester



In Excess of £300,000

Lansdowne Road

Eccles, Manchester

Well presented three bed terrace in Monton Village. Open plan lounge/dining, sleek kitchen, 3 bedrooms, family bathroom and en suite laid over the upper two floors, garden bar, off-road parking. Close to amenities, schools, parks, transport links. Great for families.

Council Tax band: A

Tenure: Freehold

- Three Bedroom Terrace Property Laid over Three Floors, Located in the Heart of Monton Village
- Open Plan Lounge & Dining Room
- Modern Fitted Kitchen Flooded with Natural Day Light
- Three Generously Sized Bedrooms
- Three Piece Bathroom & En Suite
- Garden Bar with French Doors on to the Low Maintenance Rear Garden
- Potential For Off Road Parking to the Rear
- Surrounded by a Plethora of Amenities just a Short Walk from the Property
- Well Served by Public Transport & Motorway Links



HILLS

Reception Room One

10' 5" x 11' 2" (3.17m x 3.41m)

Complete with a ceiling light point, double glazed window and wall mounted radiator. Fitted with laminate flooring.

Reception Room Two

12' 4" x 10' 3" (3.75m x 3.12m)

Featuring a log burner. Complete with a ceiling light point, double glazed window and wall mounted radiator. Fitted with laminate flooring.

Kitchen

11' 7" x 7' 10" (3.52m x 2.38m)

Featuring complementary wall and base units with integral cooker and hob. Space for a washing machine, dishwasher and fridge freezer. Complete with ceiling spotlights, double glazed window and wall mounted radiator. Fitted with lino flooring.

Bar

10' 9" x 10' 11" (3.27m x 3.33m)

Complete with a ceiling light point, double glazed patio doors and electric radiator.

Landing

Complete with a ceiling light point and carpet flooring.

Bedroom One

14' 2" x 12' 9" (4.33m x 3.88m)

Complete with a ceiling light point, double glazed window and wall mounted radiator. Fitted with laminate flooring.

En suite

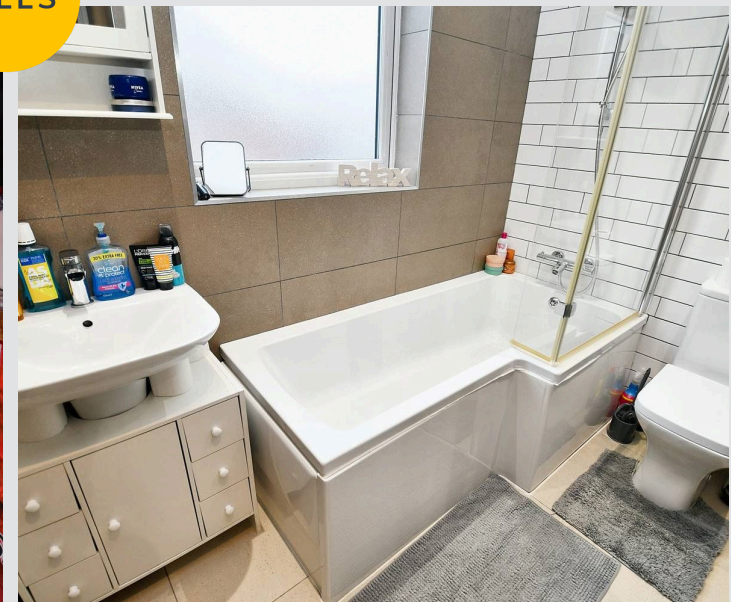
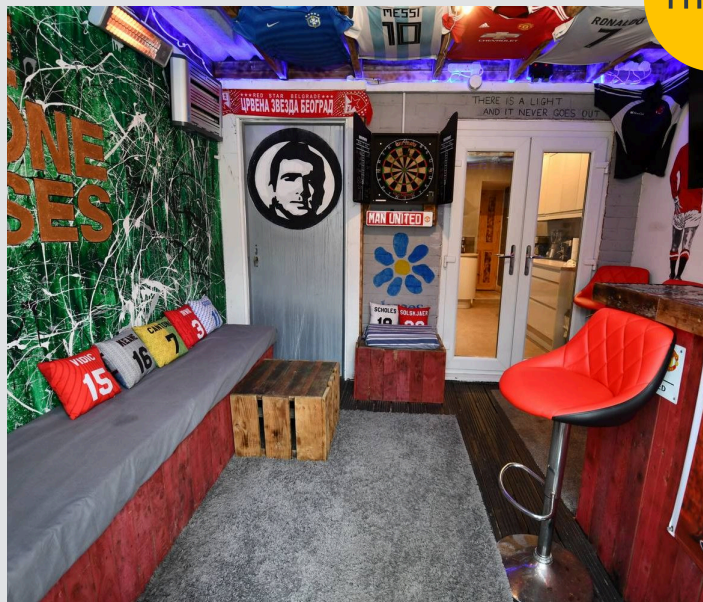
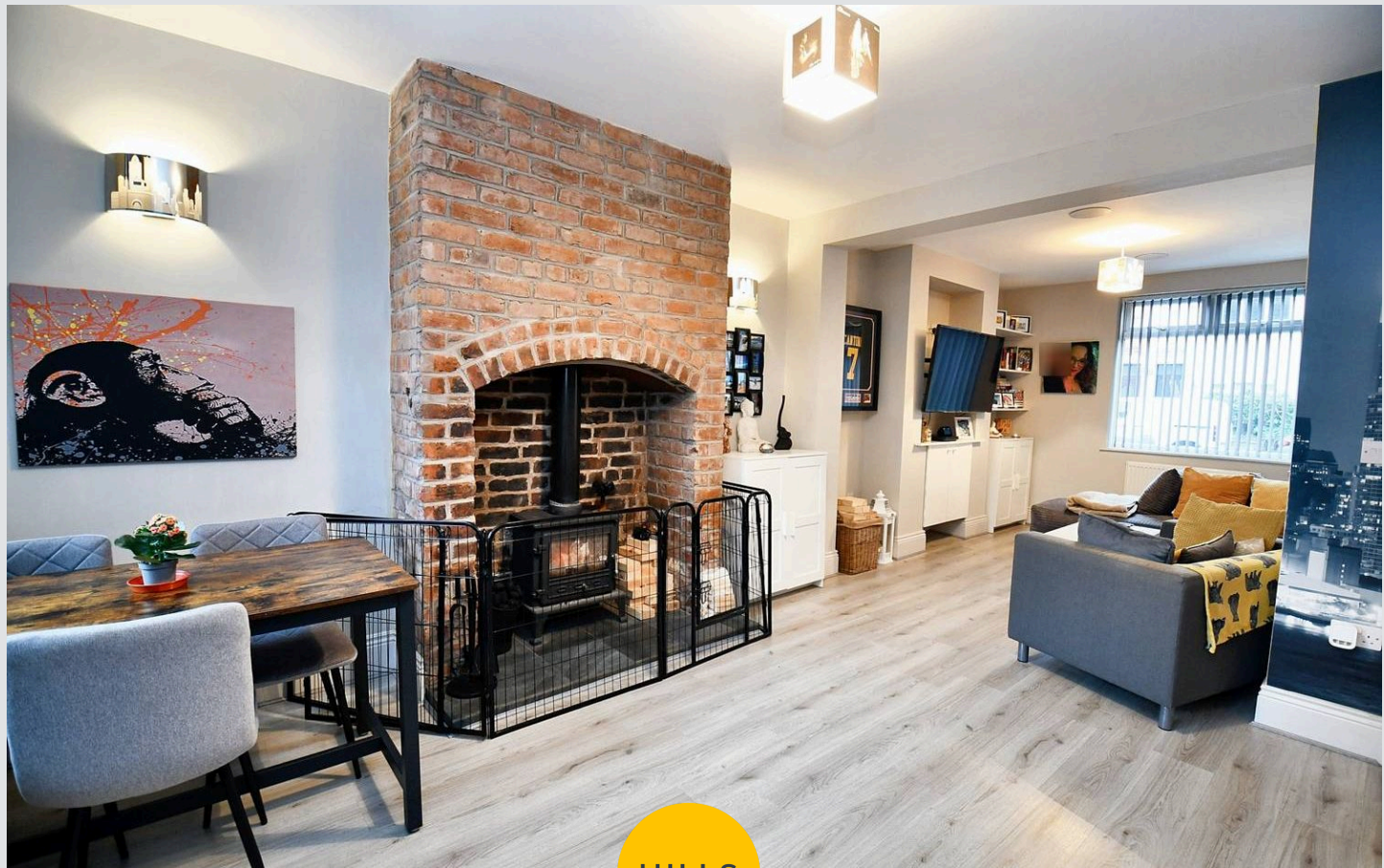
4' 11" x 6' 1" (1.49m x 1.85m)

Featuring a three piece suite including shower, hand wash basin and W.C. Complete with ceiling spotlights.

Bedroom Two

18' 0" x 13' 8" (5.48m x 4.16m)

Complete with ceiling spotlights, two skylights and a wall mounted radiator. Fitted with carpet flooring.



Bedroom Three

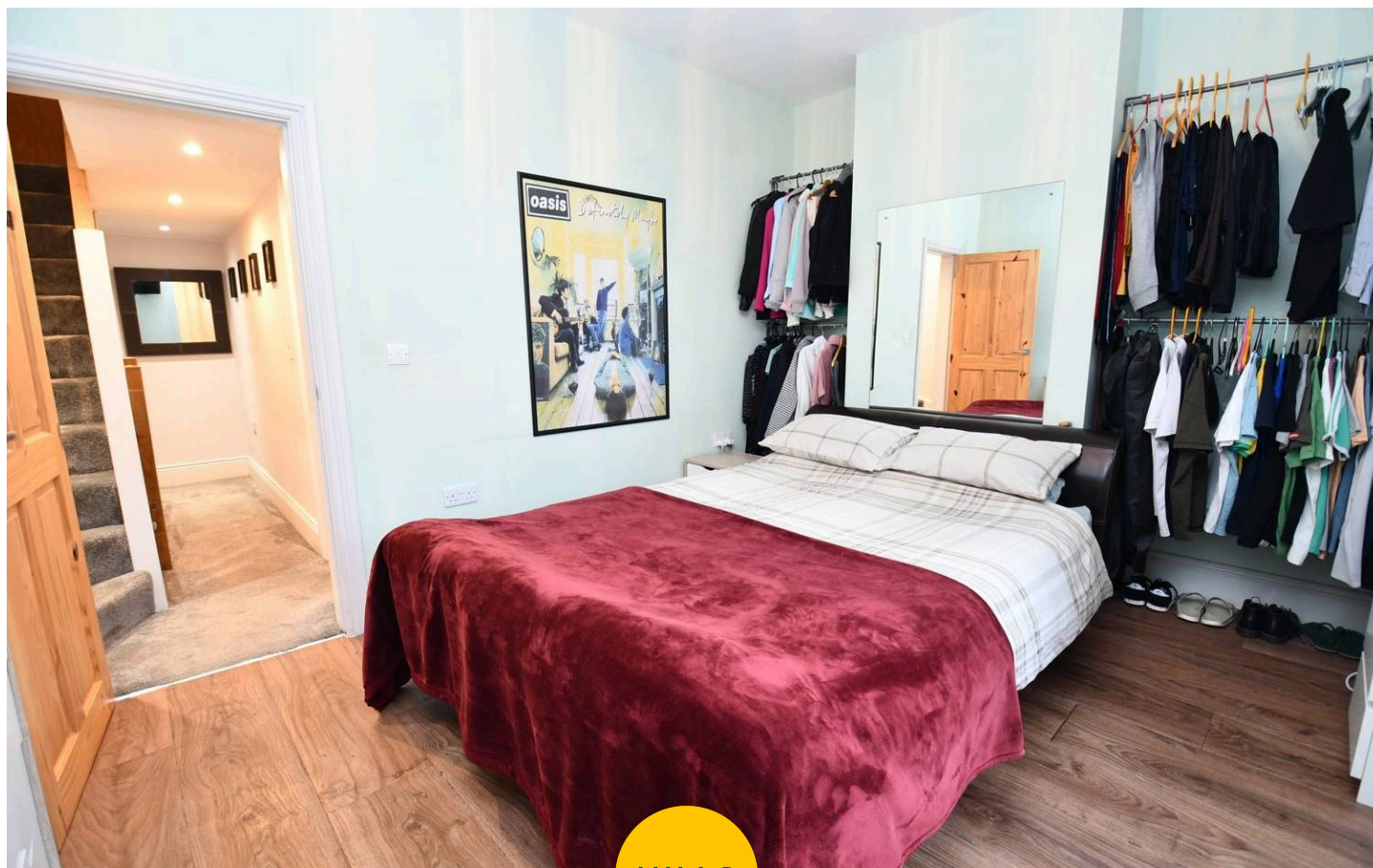
12' 2" x 8' 7" (3.70m x 2.62m)

Complete with a ceiling light point, double glazed window and wall mounted radiator. Fitted with carpet flooring.

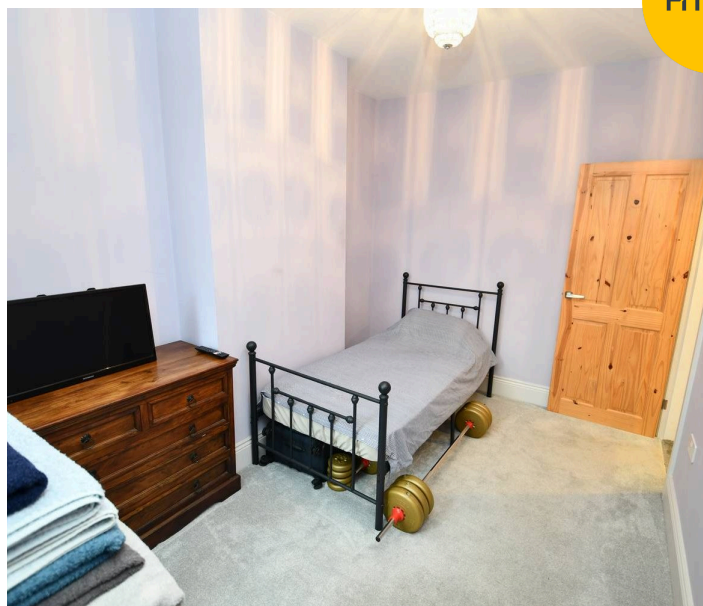
Bathroom

5' 2" x 7' 9" (1.58m x 2.37m)

Featuring a three piece suite including bath with shower over, hand wash basin and W.C. Complete with ceiling spotlights, double glazed window, tiled walls and flooring.



HILLS







Hills | Salfords Estate Agent

Hills Residential, Sentinel House Albert Street - M30 0SS

0161 707 4900

sales@hills.agency

www.hills.agency/



THE PROPERTY MISDESCRIPTIONS ACT 1991 The Agent has not tested any apparatus, equipment, fixtures and fittings or services and so cannot verify that they are in working order or fit for the purpose. A Buyer is advised to obtain verification from their Solicitor or Surveyor. References to the Tenure of a Property are based on information supplied by the Seller. The Agent has not had sight of the title documents. A Buyer is advised to obtain verification from their Solicitor. You are advised to check the availability of this property before travelling any distance to view. Every effort and precaution has been made to ensure these particulars are correct and not misleading but their accuracy is not guaranteed nor do they form part of any contract. If there is any point which is of particular importance to you, please contact us and we will provide any information you require. This is advisable, particularly if you intend to travel some distance to view the property. The mention of any appliances and services within these details does not imply that they are in full and efficient working order. These particulars are in draft form awaiting Vendors confirmation of their accuracy. These details must therefore be taken as a guide only.