

Weaste Road, Salford

Salford



£325,000

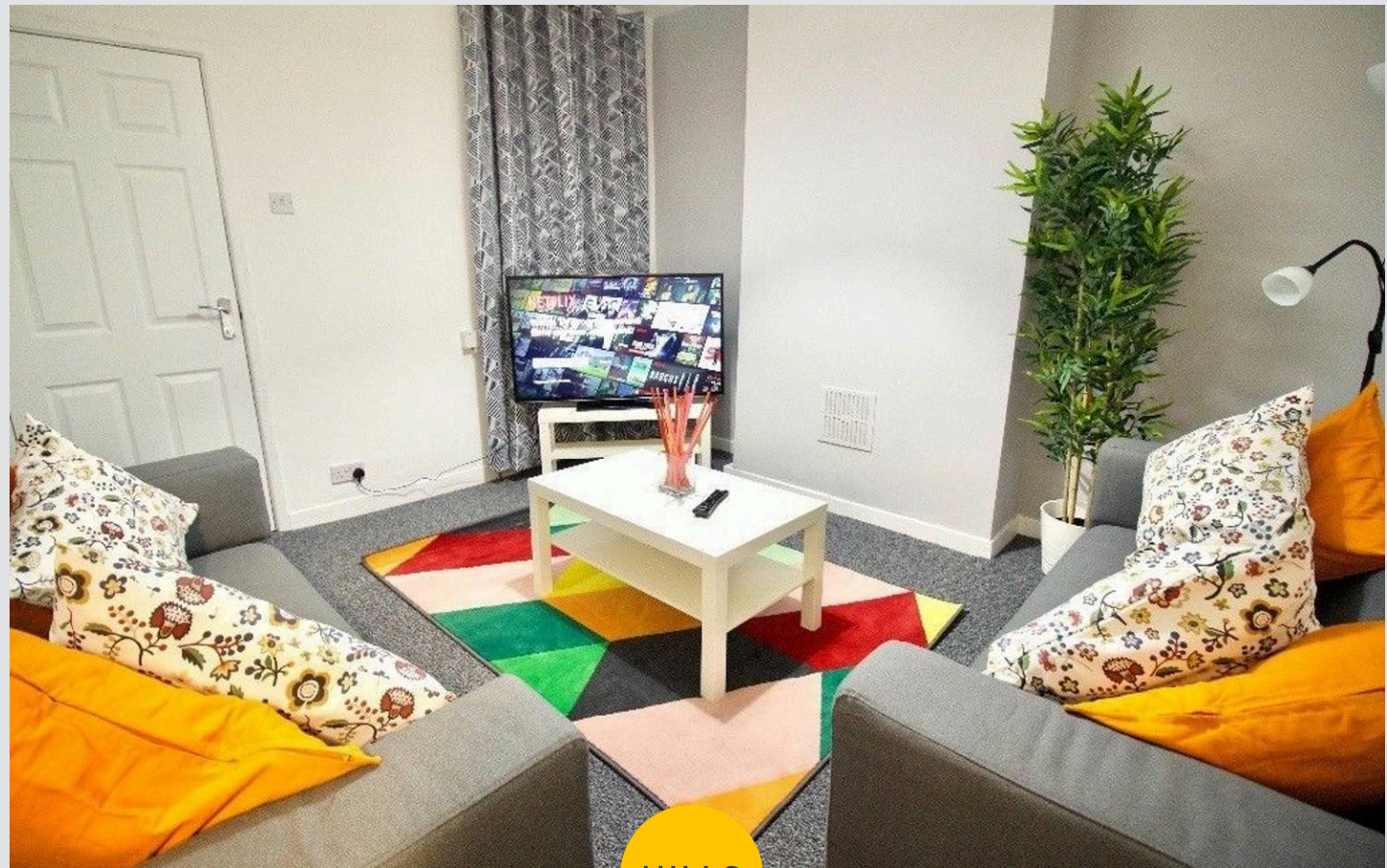
# 47 Weaste Road

Salford, Salford

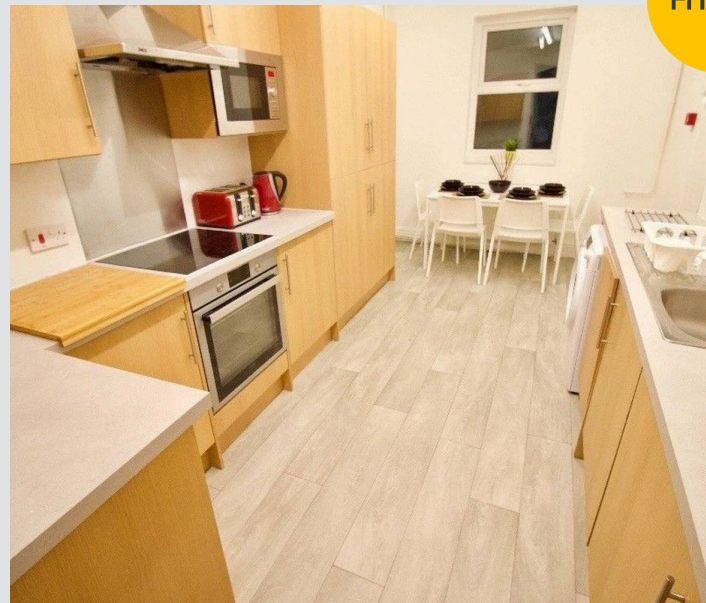
**\*\*Five Bedroom HMO, Generating £3250pcm Before Bills! Located Just a Short Walk from Weaste Tram Stop, which Provides Direct Access into Salford Quays, Media City and Manchester City Centre\*\***  
Council Tax band: A

Tenure: Freehold

- Five Bedroom House of Multiple Occupancy (HMO)
- Currently Generating £3250pcm Before Bills
- Lounge and a Kitchen Diner
- Two Modern Three-Piece Bathrooms
- Close to Excellent Transport Links Throughout Manchester
- Within Easy Access of Salford Royal Hospital
- Viewing is Highly Recommended!
- \*Please Note - Some Photos Were Taken Prior to Tenancy and are Intended as a Guide Only\*



HILLS



**Entrance Hallway**

Ceiling light point

**Downstairs Bedroom**

13' 9" x 10' 4" (4.20m x 3.15m)

Ceiling light point, two double glazed windows and a wall-mounted radiator

**Lounge**

12' 4" x 11' 5" (3.75m x 3.48m)

Ceiling light point, double-glazed window and a wall-mounted radiator

**Kitchen Diner**

16' 2" x 8' 7" (4.92m x 2.62m)

Featuring a modern range of fitted units with integral hob and oven. Complete with ceiling light point, two double glazed windows and a wall-mounted radiator



**Bedroom Four**

14' 4" x 11' 2" (4.37m x 3.41m)

Ceiling light point, double-glazed window and a wall-mounted radiator

**Bathroom**

6' 9" x 5' 8" (2.05m x 1.73m)

Featuring a modern three piece suite including bath with shower over, hand wash basin and W.C. Complete with ceiling light point a double glazed window and a heated towel rail

**Bedroom Three**

12' 2" x 9' 3" (3.71m x 2.82m)

Ceiling light point, double-glazed window and a wall-mounted radiator

**Bedroom Two**

9' 0" x 8' 11" (2.75m x 2.73m)

Ceiling light point, double-glazed window and a wall-mounted radiator

**Top Floor Bathroom**

8' 0" x 6' 1" (2.43m x 1.85m)

Featuring a modern three piece suite including bath with shower over, hand wash basin and W.C. Complete with ceiling light point and a heated towel rail

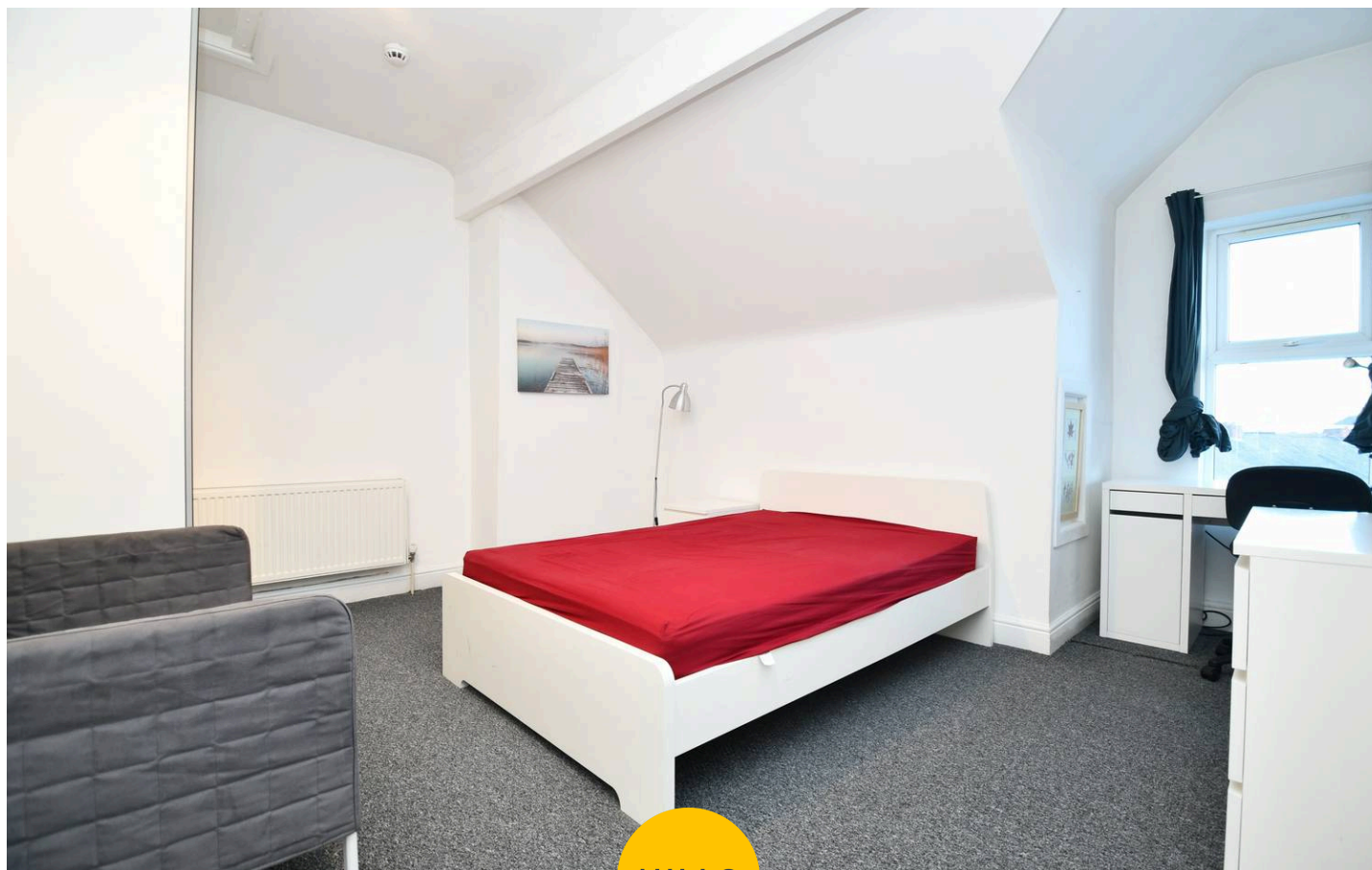
**Bedroom Five**

14' 4" x 14' 3" (4.36m x 4.35m)

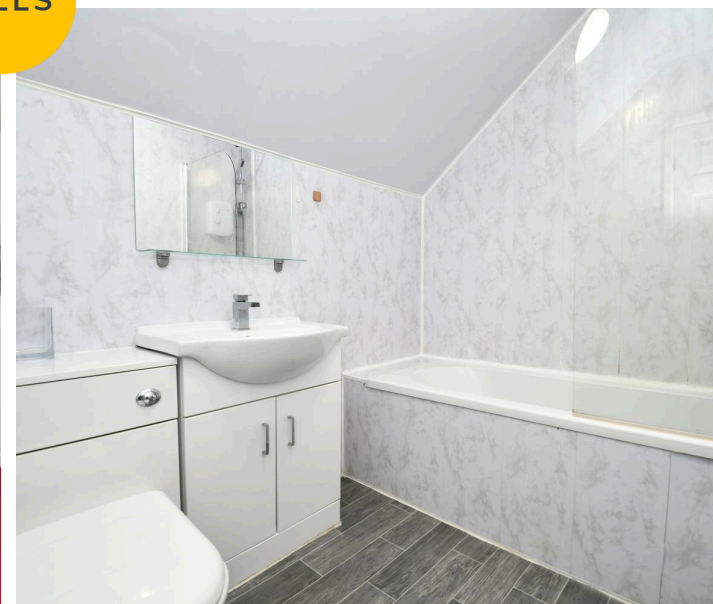
Ceiling light point, double-glazed window and a wall-mounted radiator

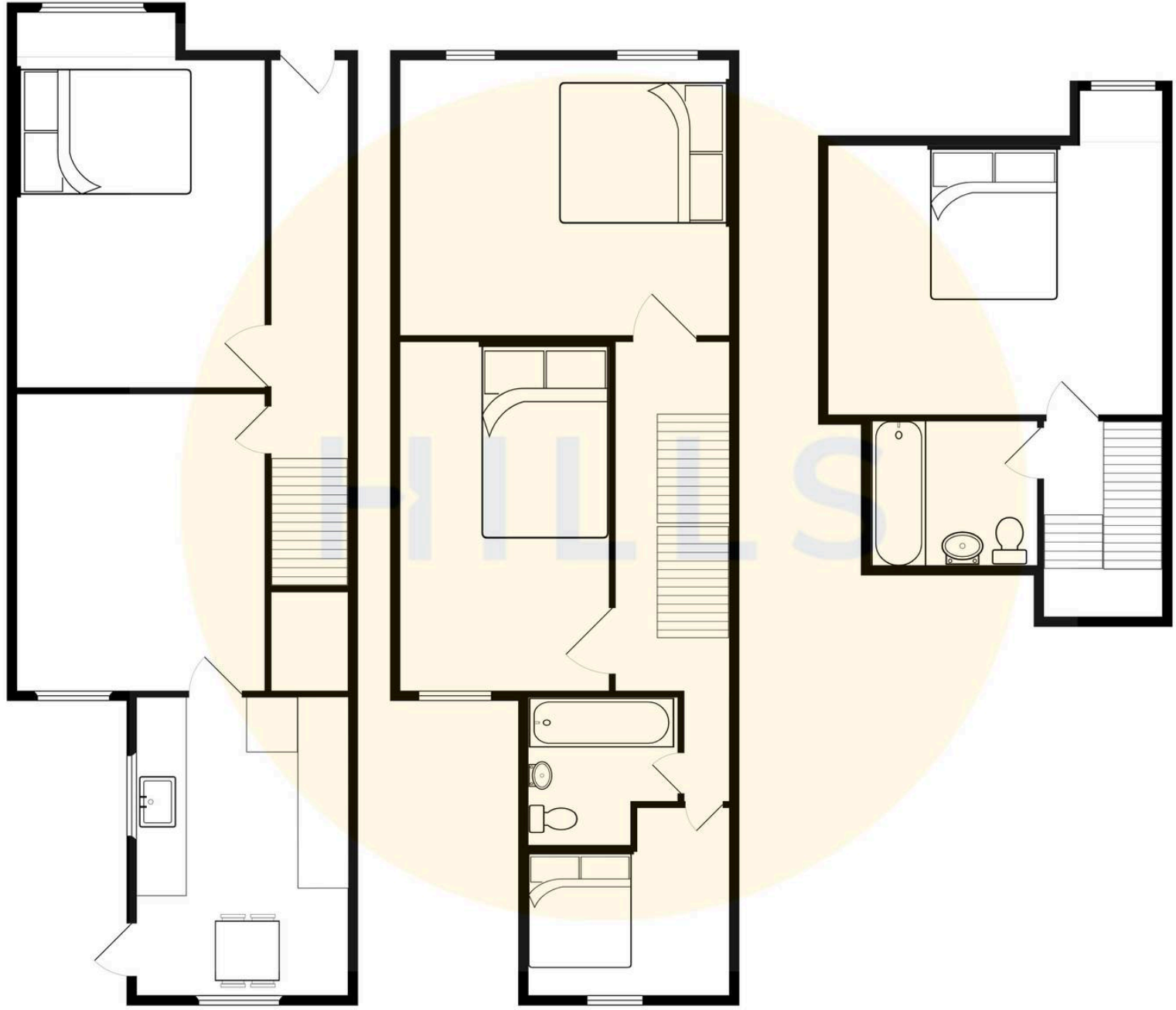
**Externally**

There are low-maintenance courtyard gardens to the front and rear



HILLS







## Hills | Salfords Estate Agent

Hills Residential, Sentinel House Albert Street - M30 0SS

0161 707 4900

[sales@hills.agency](mailto:sales@hills.agency)

[www.hills.agency/](http://www.hills.agency/)



THE PROPERTY MISDESCRIPTIONS ACT 1991 The Agent has not tested any apparatus, equipment, fixtures and fittings or services and so cannot verify that they are in working order or fit for the purpose. A Buyer is advised to obtain verification from their Solicitor or Surveyor. References to the Tenure of a Property are based on information supplied by the Seller. The Agent has not had sight of the title documents. A Buyer is advised to obtain verification from their Solicitor. You are advised to check the availability of this property before travelling any distance to view. Every effort and precaution has been made to ensure these particulars are correct and not misleading but their accuracy is not guaranteed nor do they form part of any contract. If there is any point which is of particular importance to you, please contact us and we will provide any information you require. This is advisable, particularly if you intend to travel some distance to view the property. The mention of any appliances and services within these details does not imply that they are in full and efficient working order. These particulars are in draft form awaiting Vendors confirmation of their accuracy. These details must therefore be taken as a guide only.