

Cemetery Road

Salford



£240,000

Cemetery Road

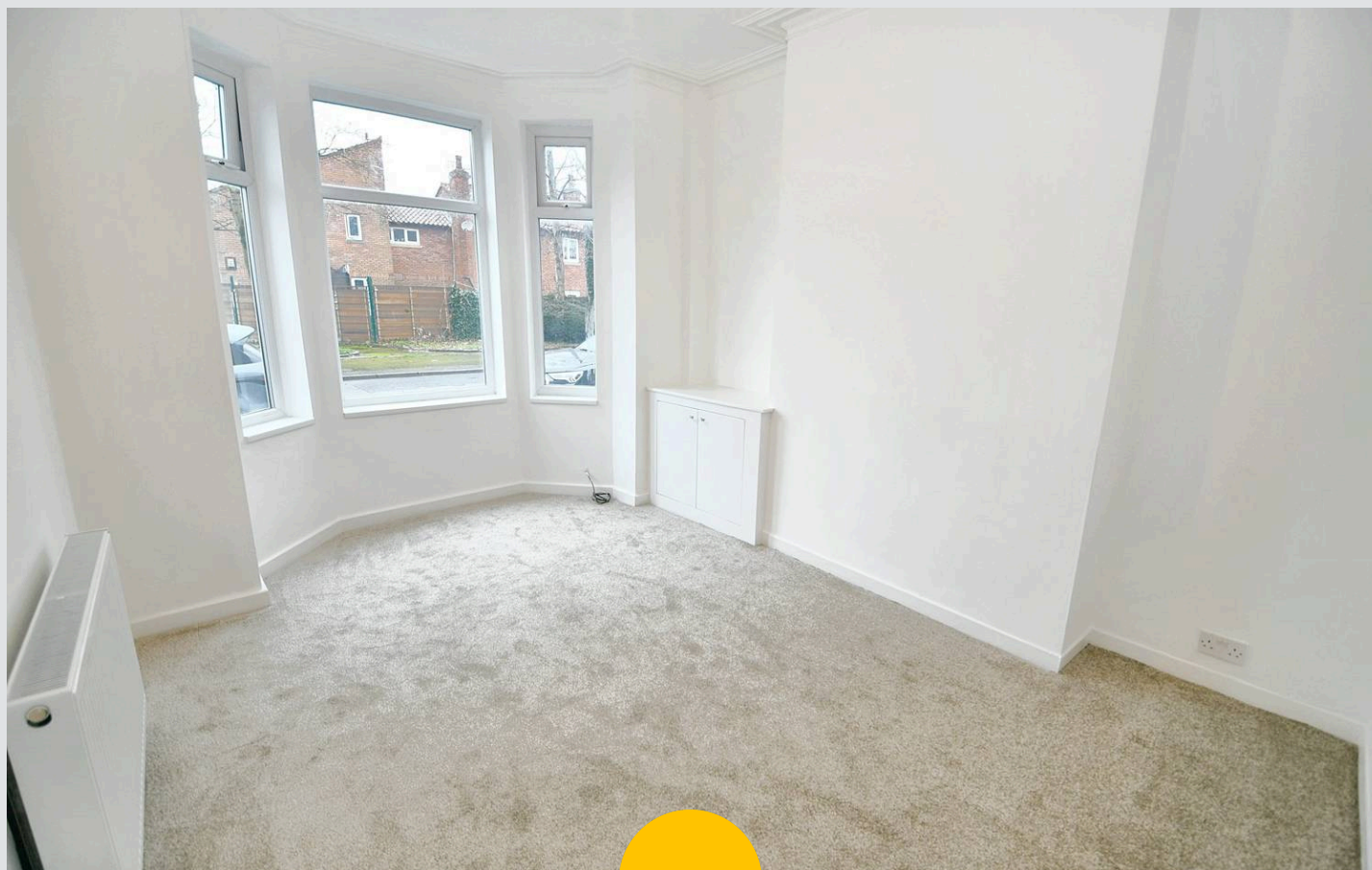
Salford

This period property has been renovated throughout, boasting a new kitchen and bathroom, offering a seamless blend of period character and modern interior.

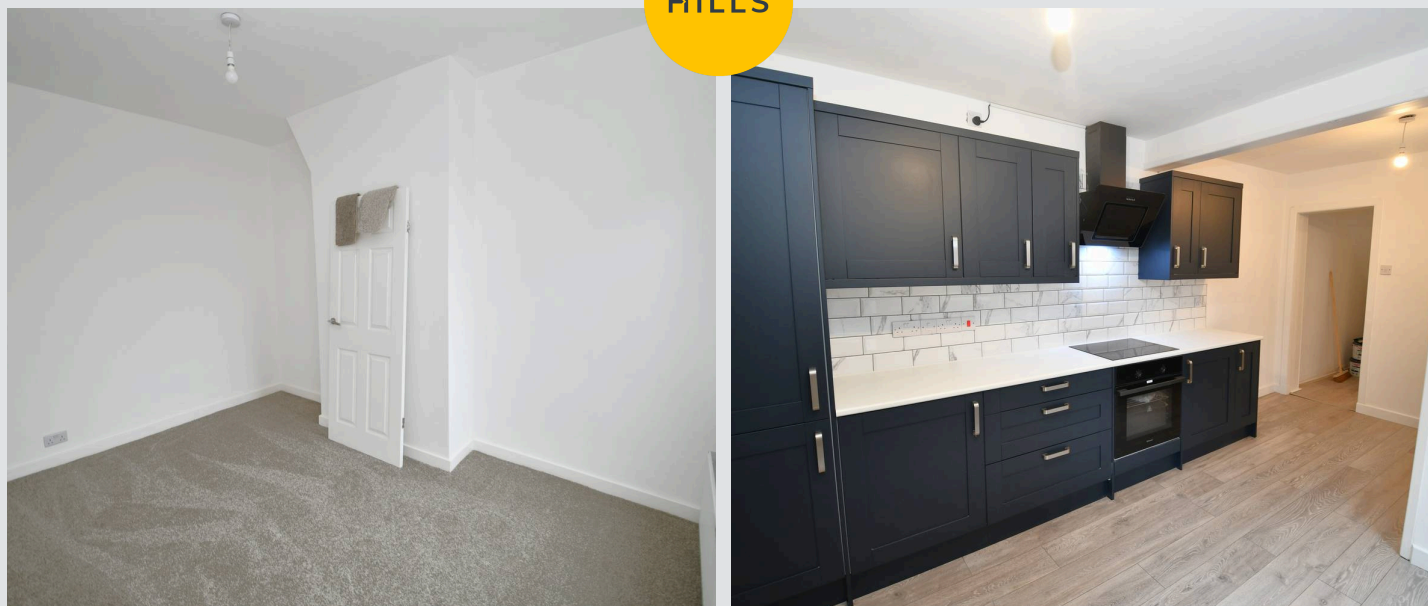
Council Tax band: A

Tenure: Freehold

- Stunning three bedroom house
- Period terraced property
- Newly refurbished
- Including a new kitchen and new bathroom
- Three piece modern shower suite
- Ideal first time home!
- Spacious throughout
- Modern interior
- Excellent location within close proximity to Salford Quays, Media City, and Salford Royal
- Bay fronted lounge



HILLS



Entrance Hallway

Complete with a ceiling light point and carpet flooring.

Dining Room

10' 10" x 11' 10" (3.30m x 3.60m)

Complete with a ceiling light point, double glazed bay window and wall mounted radiator. Fitted with carpet flooring.

Lounge

11' 6" x 14' 9" (3.50m x 4.50m)

Complete with a ceiling light point, double glazed window and wall mounted radiator. Fitted with carpet flooring.

Kitchen

8' 10" x 17' 1" (2.70m x 5.20m)

Featuring modern wall and base units with integral stainless steel sink and drainer unit, electric hob and oven, fridge freezer. Complete with two ceiling light points, two double glazed windows and wall mounted radiator. Fitted with wood effect flooring.

Landing

Complete with a ceiling light point and carpet flooring.

Bedroom One

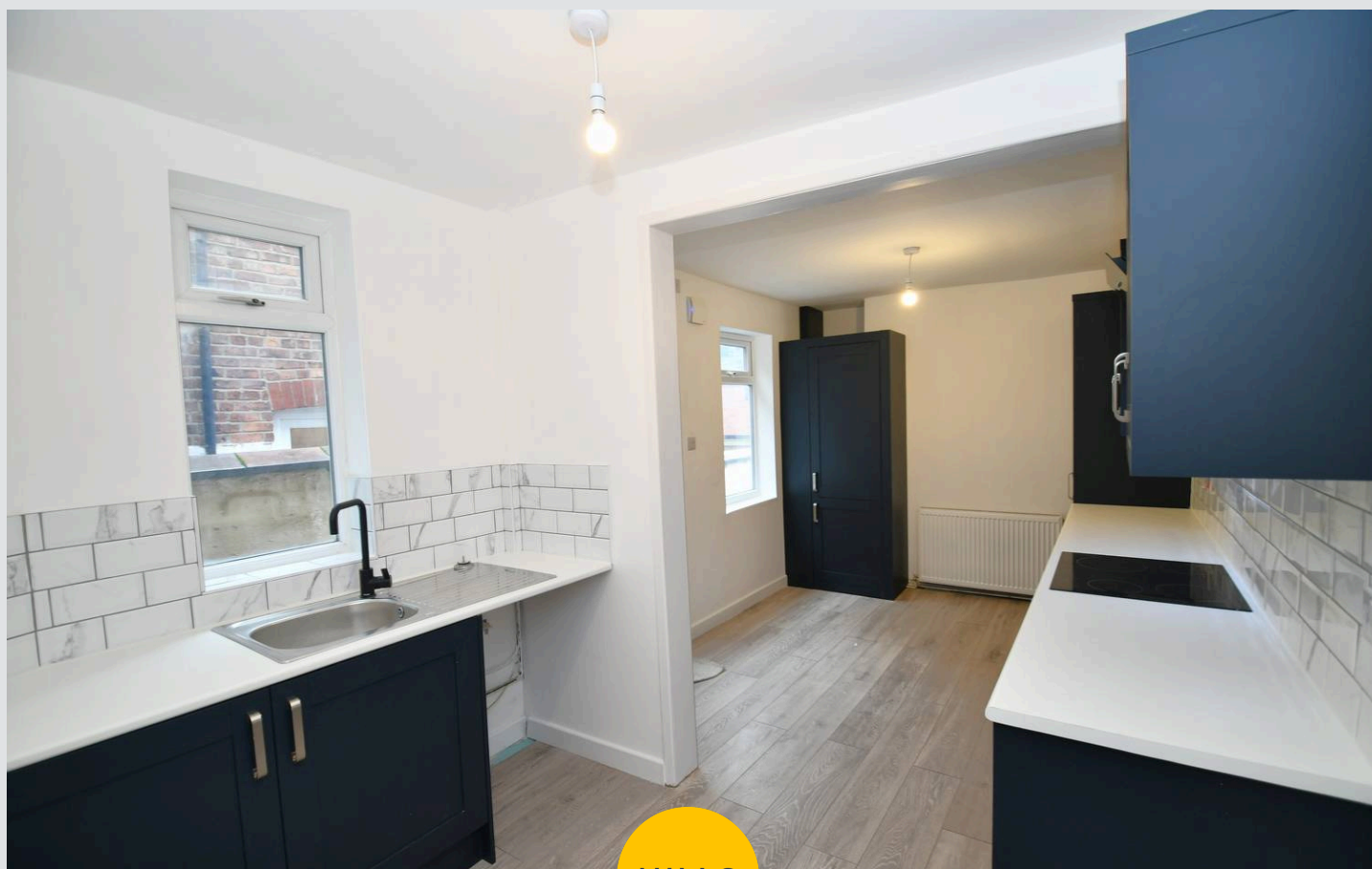
14' 5" x 11' 6" (4.40m x 3.50m)

Complete with a ceiling light point, two double glazed windows and wall mounted radiator. Fitted with carpet flooring.

Bedroom Two

9' 2" x 12' 10" (2.80m x 3.90m)

Complete with a ceiling light point, double glazed window and wall mounted radiator. Fitted with carpet flooring.



Bedroom Three

8' 10" x 11' 6" (2.70m x 3.50m)

Complete with a ceiling light point, double glazed window and wall mounted radiator. Fitted with carpet flooring.

Bathroom

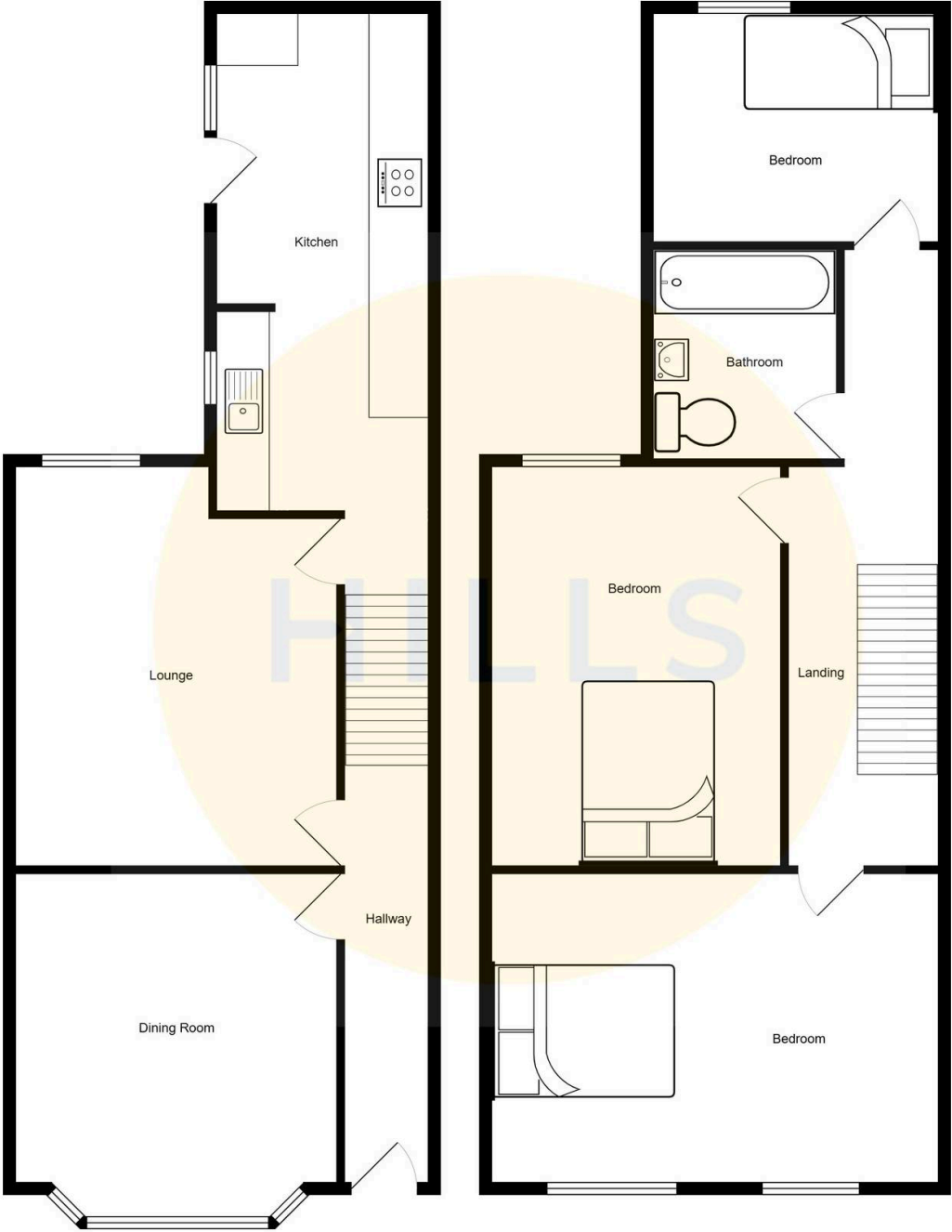
5' 11" x 6' 3" (1.80m x 1.90m)

Featuring a contemporary three piece suite including a bath, vanity unit with hand wash basin and W.C. Complete with a ceiling light point, double glazed window and tile effect flooring.



HILLS







Hills | Salfords Estate Agent

Hills Residential, Sentinel House Albert Street - M30 0SS

0161 707 4900

sales@hills.agency

www.hills.agency/



THE PROPERTY MISDESCRIPTIONS ACT 1991 The Agent has not tested any apparatus, equipment, fixtures and fittings or services and so cannot verify that they are in working order or fit for the purpose. A Buyer is advised to obtain verification from their Solicitor or Surveyor. References to the Tenure of a Property are based on information supplied by the Seller. The Agent has not had sight of the title documents. A Buyer is advised to obtain verification from their Solicitor. You are advised to check the availability of this property before travelling any distance to view. Every effort and precaution has been made to ensure these particulars are correct and not misleading but their accuracy is not guaranteed nor do they form part of any contract. If there is any point which is of particular importance to you, please contact us and we will provide any information you require. This is advisable, particularly if you intend to travel some distance to view the property. The mention of any appliances and services within these details does not imply that they are in full and efficient working order. These particulars are in draft form awaiting Vendors confirmation of their accuracy. These details must therefore be taken as a guide only.