



Elishaw Row Eccles New Road

Salford



In Excess of **£130,000**

Elishaw Row

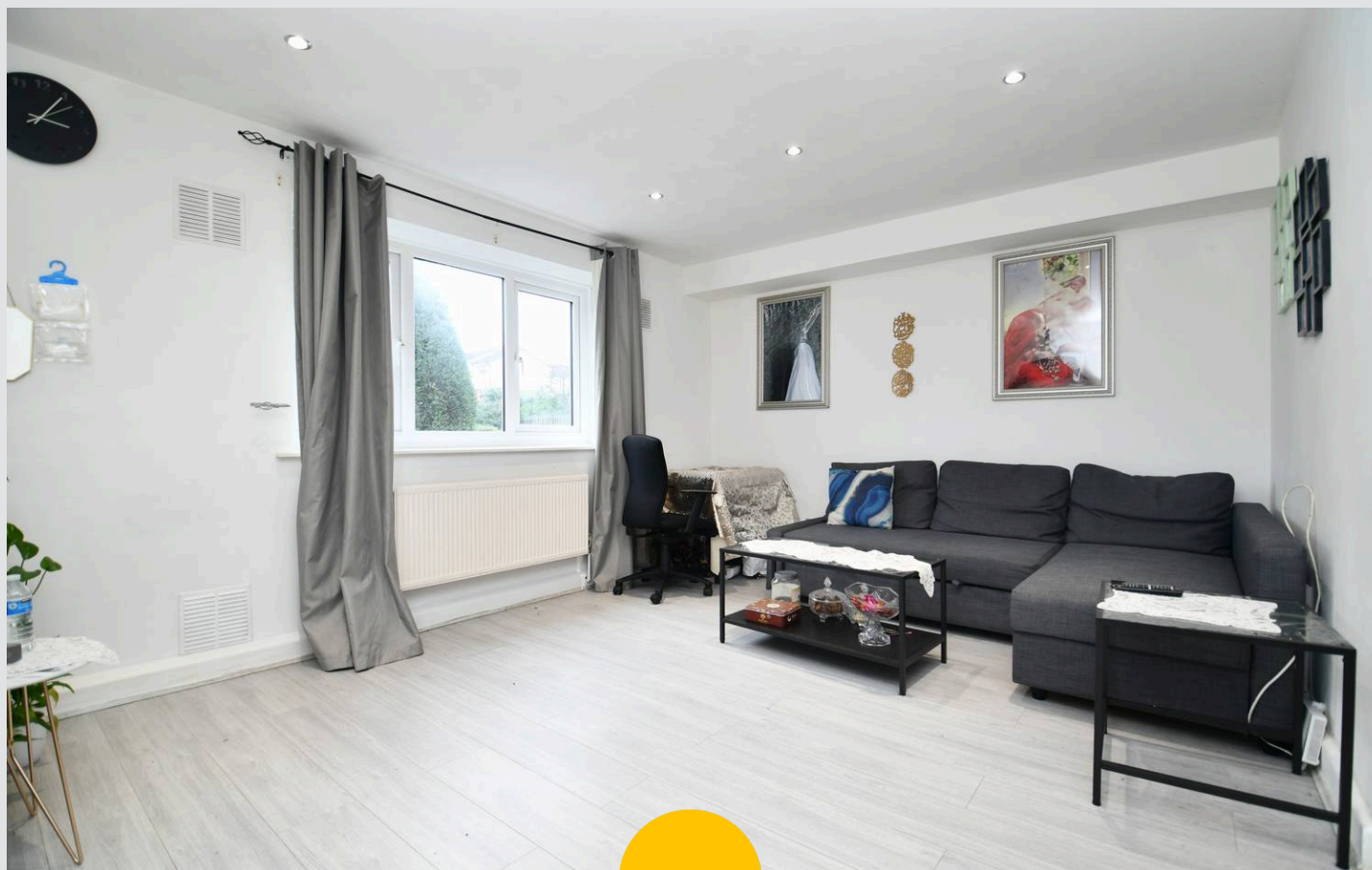
Salford

Take a look at this **STYLISH**, two bedroom ground floor apartment – located within walking distance of Salford Quays & Media City!

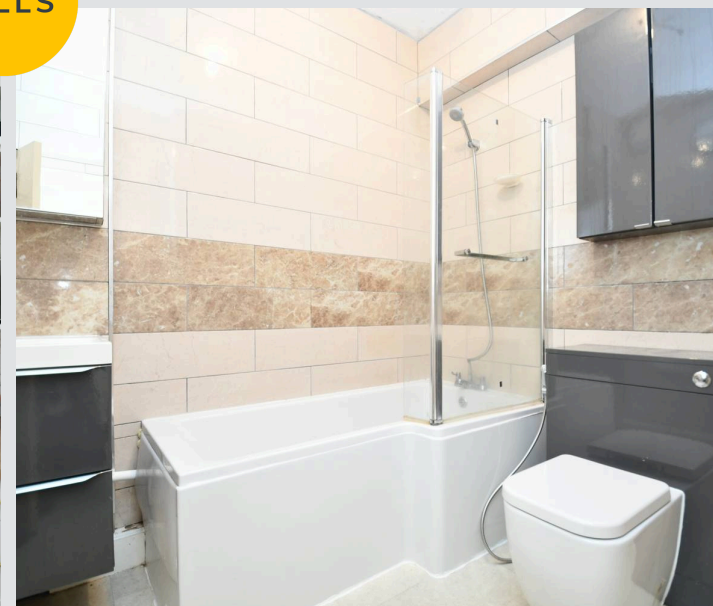
Council Tax band: A

Tenure: Leasehold

- Stylish Two Bedroom Ground Floor Apartment
- Located Within Walking Distance of Salford Quays & Media City, Which are Host to a Fine Array of Bars, Shops and Restaurants
- Bright and Airy Lounge Diner
- Stylish Three-Piece Bathroom
- Two Generously-Sized Double Bedrooms
- Benefits from Communal Gardens
- Just a Short Walk from Langworthy Tram Stop, which Provides Direct Access into Manchester City Centre
- Ideal First Time Home or Investment
- Viewing is Highly Recommended!



HILLS



Entrance Hallway

Complete with a ceiling light point, storage cupboard and laminate flooring.

Lounge

14' 8" x 12' 0" (4.46m x 3.65m)

Complete with ceiling spotlights, double glazed window and wall mounted radiator. Fitted with laminate flooring.

Kitchen

9' 7" x 10' 2" (2.91m x 3.09m)

Featuring complementary wall and base units with extractor fan, oven and hob, integral fridge freezer, dishwasher and washing machine. Complete with a ceiling light point, double glazed window and wall mounted radiator. Fitted with laminate flooring.

Bedroom One

12' 10" x 11' 4" (3.91m x 3.45m)

Complete with a ceiling light point, double glazed window and wall mounted radiator. Fitted with carpet flooring.

Bedroom Two

13' 6" x 9' 8" (4.11m x 2.94m)

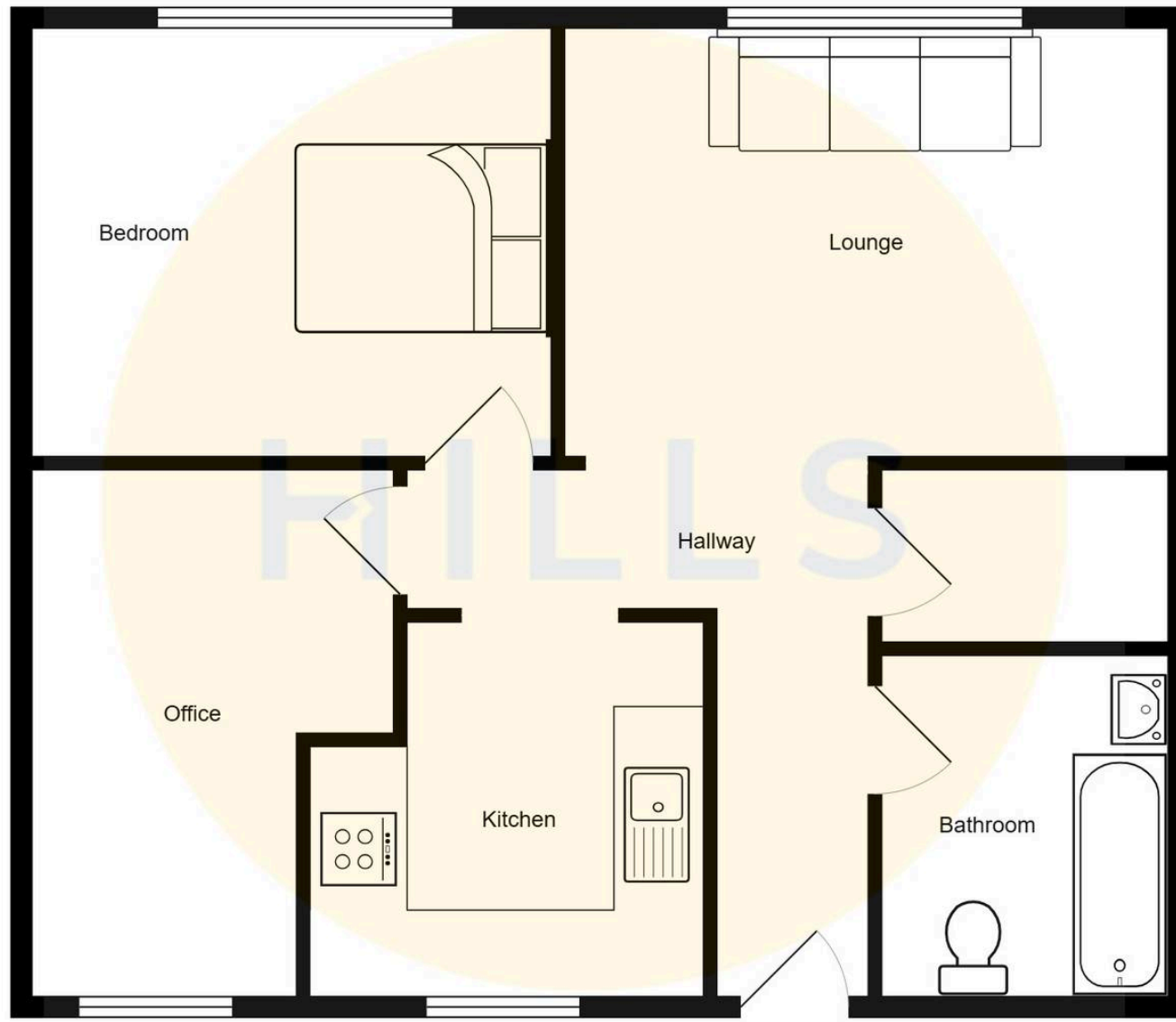
Complete with a ceiling light point, double glazed window and wall mounted radiator. Fitted with carpet flooring.

Bathroom

6' 9" x 8' 0" (2.05m x 2.44m)

Featuring a three piece suite including bath with shower over, hand wash basin and W.C. Complete with a ceiling light point, extractor fan, tiled walls and flooring.







Hills | Salfords Estate Agent

Hills Residential, Sentinel House Albert Street - M30 0SS

0161 707 4900

sales@hills.agency

www.hills.agency/



THE PROPERTY MISDESCRIPTIONS ACT 1991 The Agent has not tested any apparatus, equipment, fixtures and fittings or services and so cannot verify that they are in working order or fit for the purpose. A Buyer is advised to obtain verification from their Solicitor or Surveyor. References to the Tenure of a Property are based on information supplied by the Seller. The Agent has not had sight of the title documents. A Buyer is advised to obtain verification from their Solicitor. You are advised to check the availability of this property before travelling any distance to view. Every effort and precaution has been made to ensure these particulars are correct and not misleading but their accuracy is not guaranteed nor do they form part of any contract. If there is any point which is of particular importance to you, please contact us and we will provide any information you require. This is advisable, particularly if you intend to travel some distance to view the property. The mention of any appliances and services within these details does not imply that they are in full and efficient working order. These particulars are in draft form awaiting Vendors confirmation of their accuracy. These details must therefore be taken as a guide only.