



Edison Road, Eccles

Manchester



In Excess of £210,000

Edison Road

Eccles, Manchester

Council Tax band: B

Tenure: Leasehold



HILLS



Reception Room One

24' 3" x 10' 10" (7.39m x 3.31m)

Complete with two ceiling light points, double glazed bay window and two wall mounted radiators. Fitted with patio sliding doors and carpet flooring.

Kitchen

7' 9" x 11' 7" (2.37m x 3.52m)

Featuring complementary wall and base units. Space for a washing machine, dishwasher, cooker and fridge freezer. Complete with a ceiling light point, double glazed window and wall mounted radiator. Fitted with lino flooring.

Conservatory

17' 7" x 9' 5" (5.37m x 2.88m)

Complete with two wall light points, double glazed windows and door, storage heater and tiled flooring.

Landing

Complete with a ceiling light point and carpet flooring.

Bedroom One

11' 1" x 11' 6" (3.38m x 3.51m)

Featuring fitted wardrobes. Complete with a ceiling light point, double glazed bay window and wall mounted radiator. Fitted with carpet flooring.

Bedroom Two

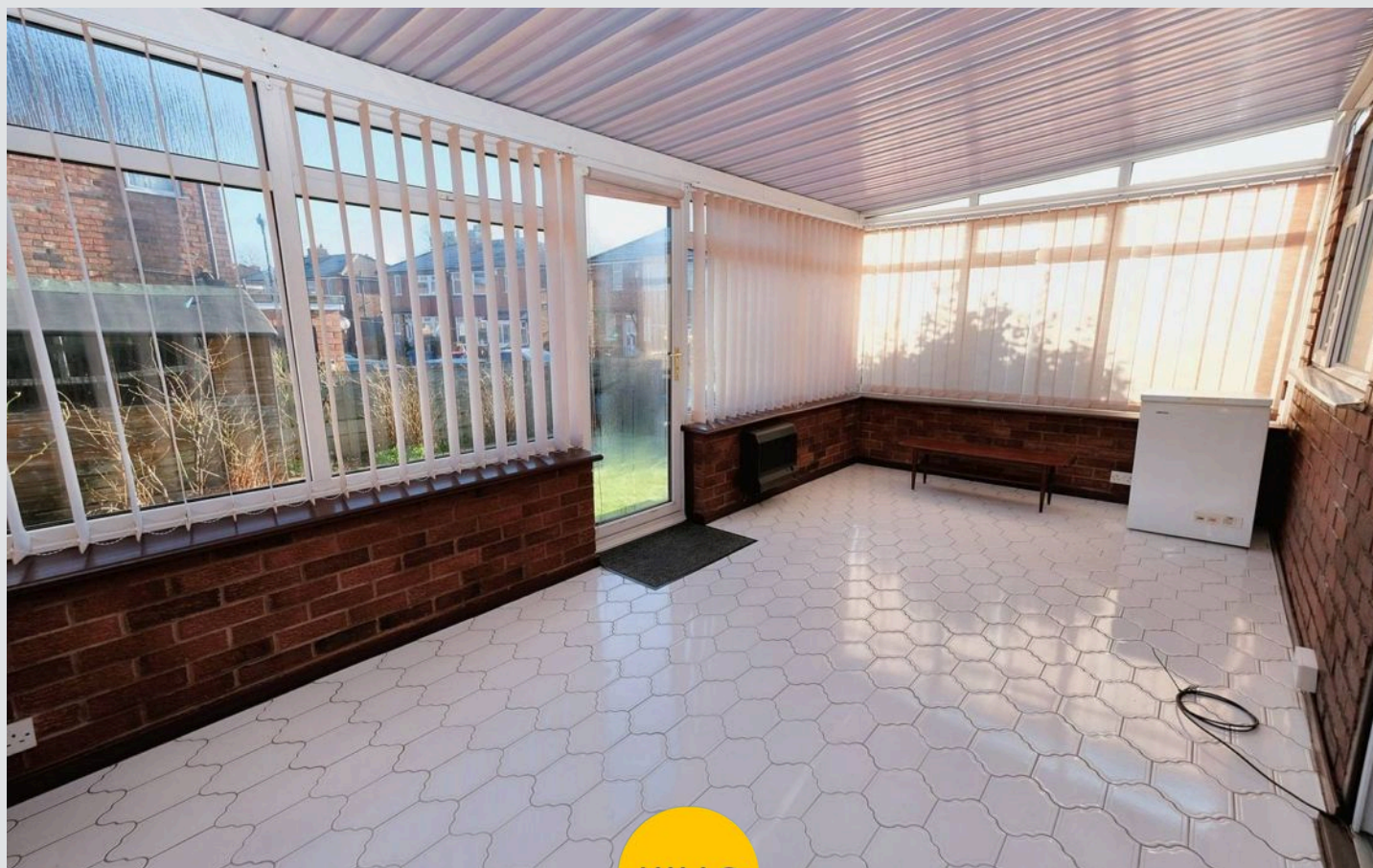
10' 10" x 8' 0" (3.31m x 2.44m)

Featuring fitted wardrobes. Complete with a ceiling light point, double glazed window and wall mounted radiator. Fitted with carpet flooring.

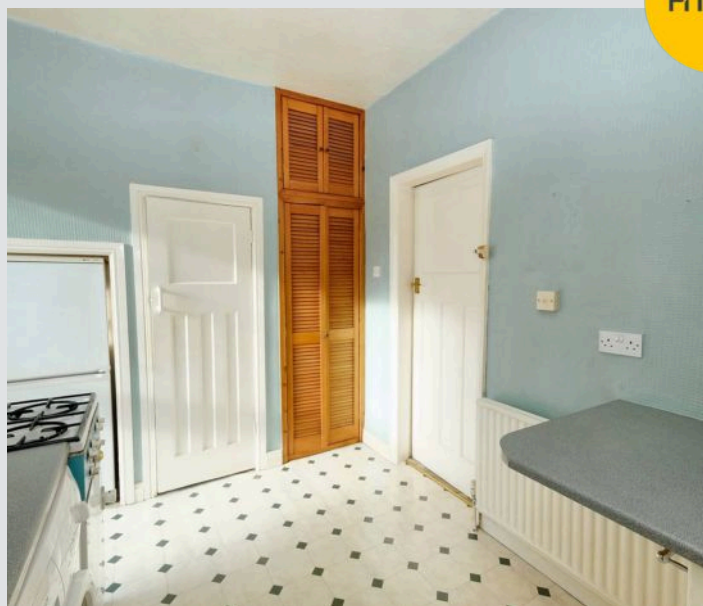
Bedroom Three

7' 9" x 7' 10" (2.36m x 2.39m)

Featuring fitted wardrobes. Complete with a ceiling light point, double glazed window and wall mounted radiator. Fitted with carpet flooring.



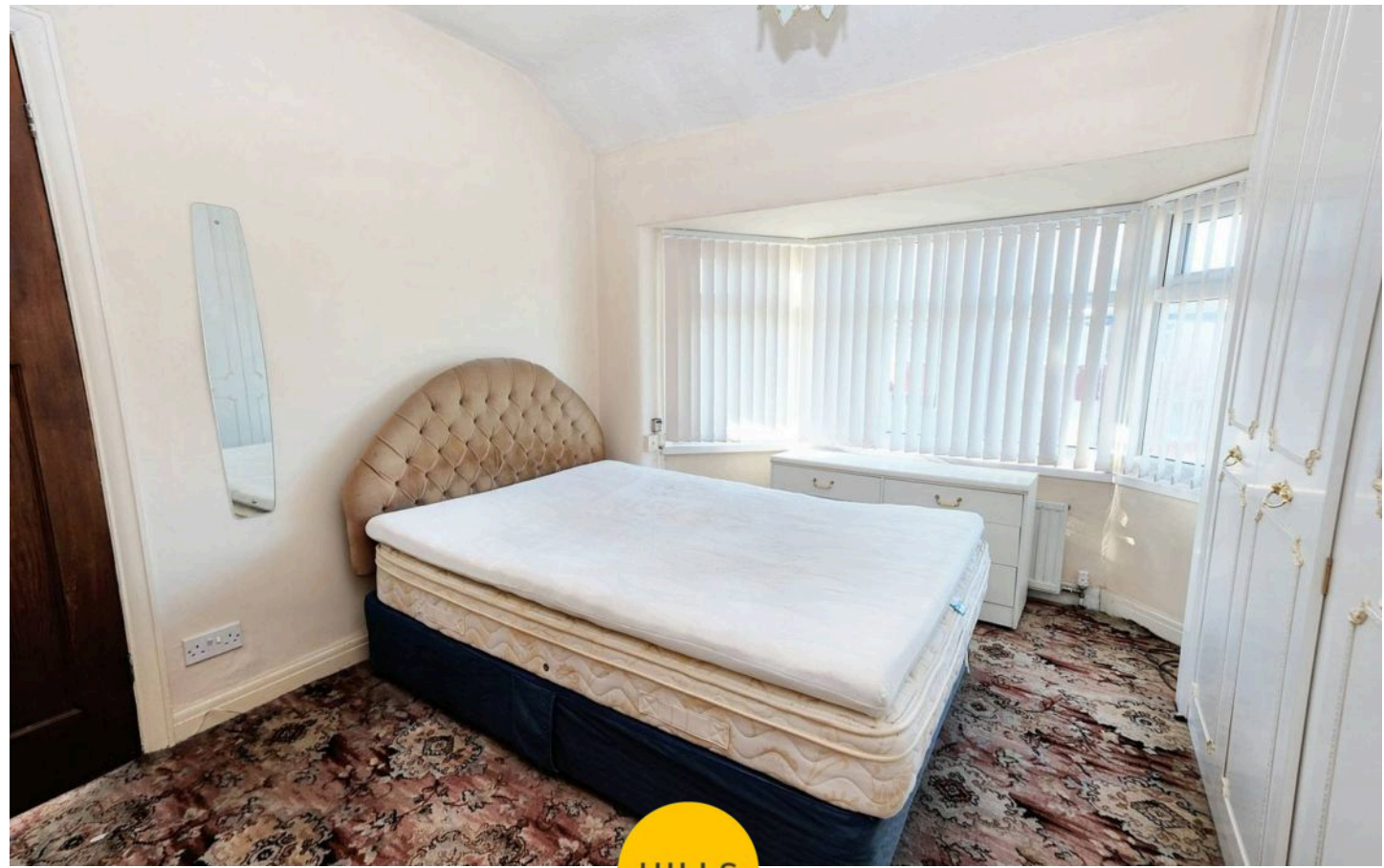
HILLS

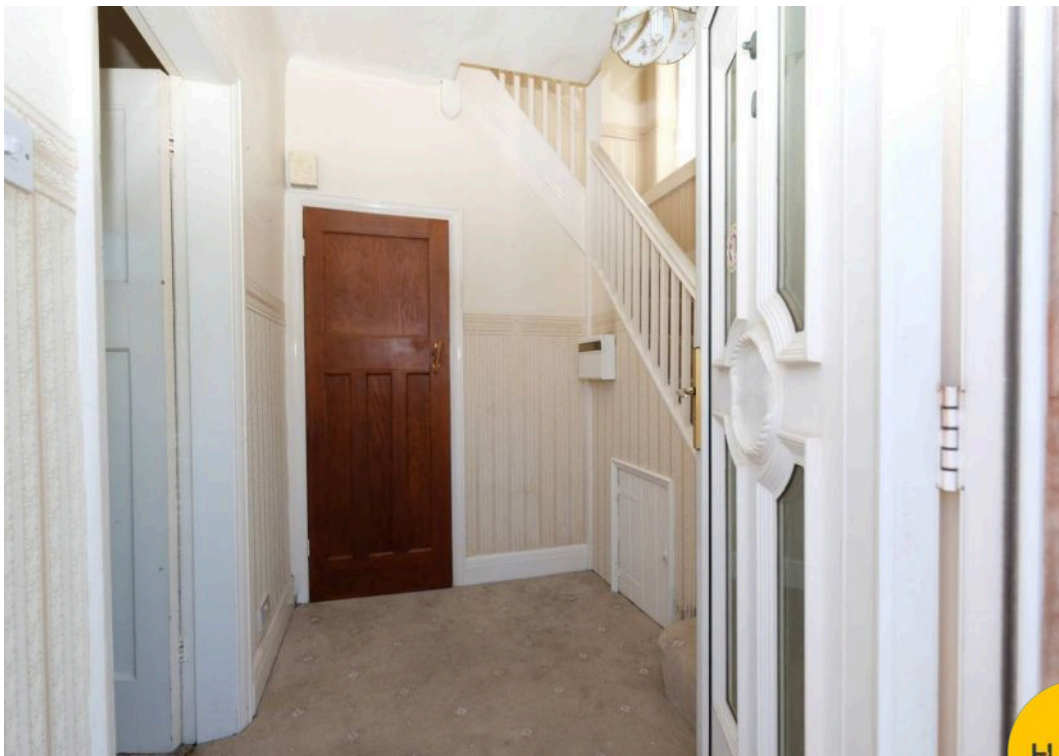


Bathroom

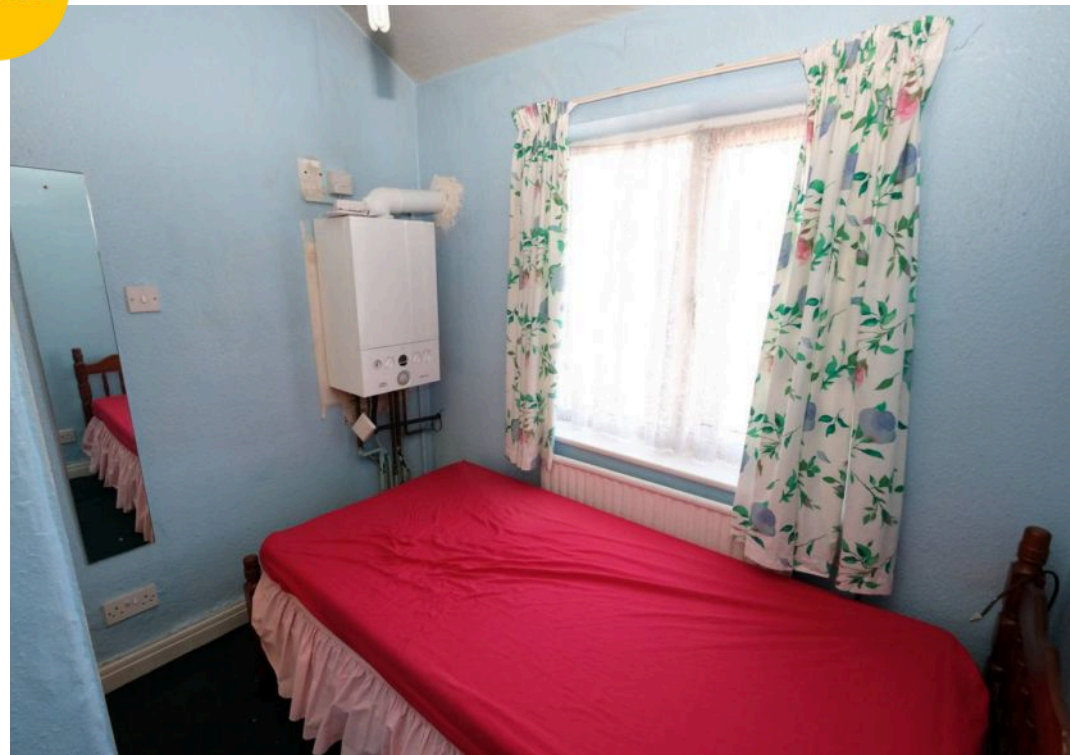
6' 0" x 7' 9" (1.84m x 2.36m)

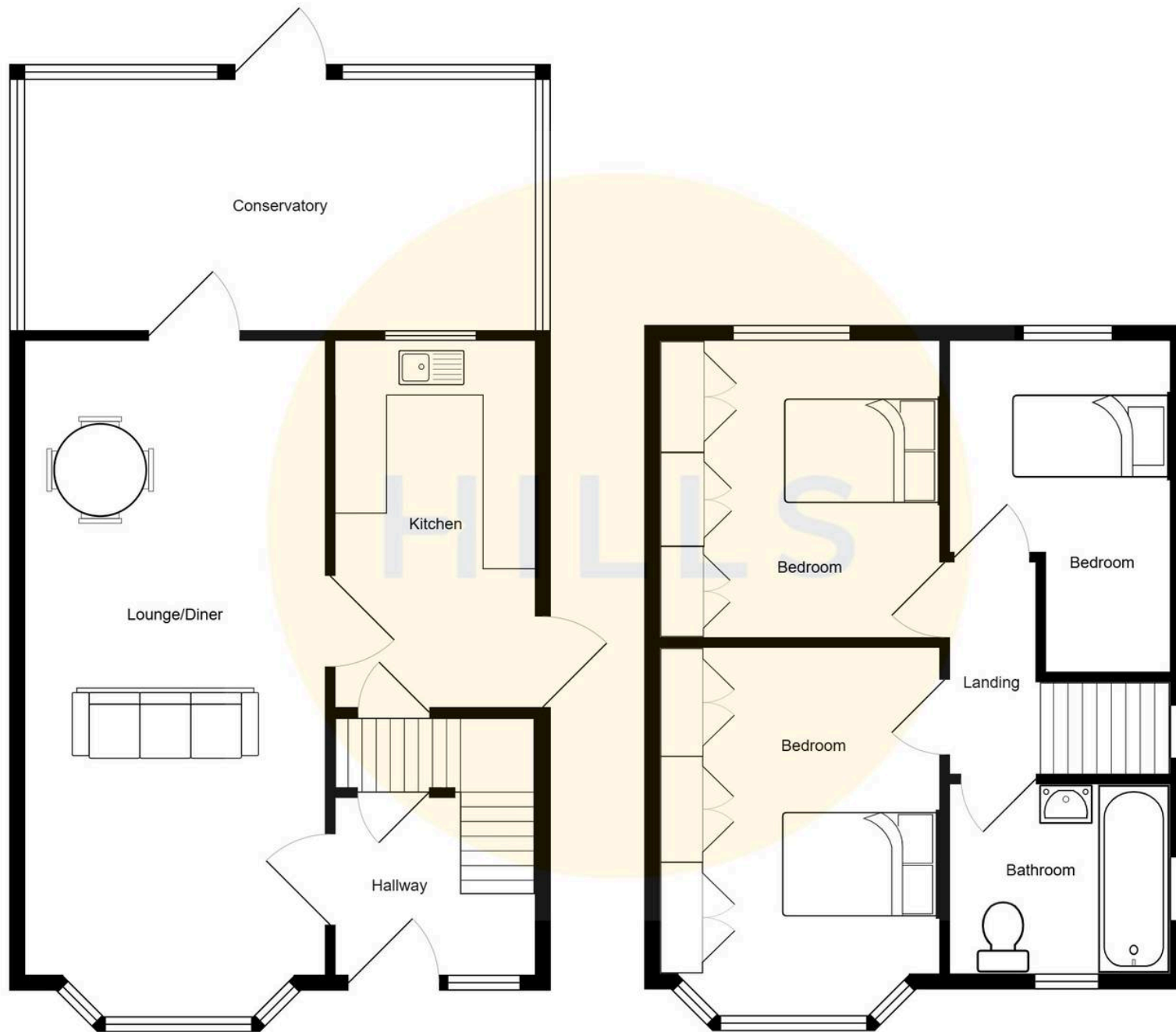
Featuring a three piece suite including bath with electric shower over, hand wash basin and W.C. Complete with two double glazed windows, wall mounted radiator and carpet flooring.





HILLS







Hills | Salfords Estate Agent

Hills Residential, Sentinel House Albert Street – M30 0SS

0161 707 4900

sales@hills.agency

www.hills.agency/



THE PROPERTY MISDESCRIPTIONS ACT 1991 The Agent has not tested any apparatus, equipment, fixtures and fittings or services and so cannot verify that they are in working order or fit for the purpose. A Buyer is advised to obtain verification from their Solicitor or Surveyor. References to the Tenure of a Property are based on information supplied by the Seller. The Agent has not had sight of the title documents. A Buyer is advised to obtain verification from their Solicitor. You are advised to check the availability of this property before travelling any distance to view. Every effort and precaution has been made to ensure these particulars are correct and not misleading but their accuracy is not guaranteed nor do they form part of any contract. If there is any point which is of particular importance to you, please contact us and we will provide any information you require. This is advisable, particularly if you intend to travel some distance to view the property. The mention of any appliances and services within these details does not imply that they are in full and efficient working order. These particulars are in draft form awaiting Vendors confirmation of their accuracy. These details must therefore be taken as a guide only.