

Grange Street

Salford



In Excess of £210,000

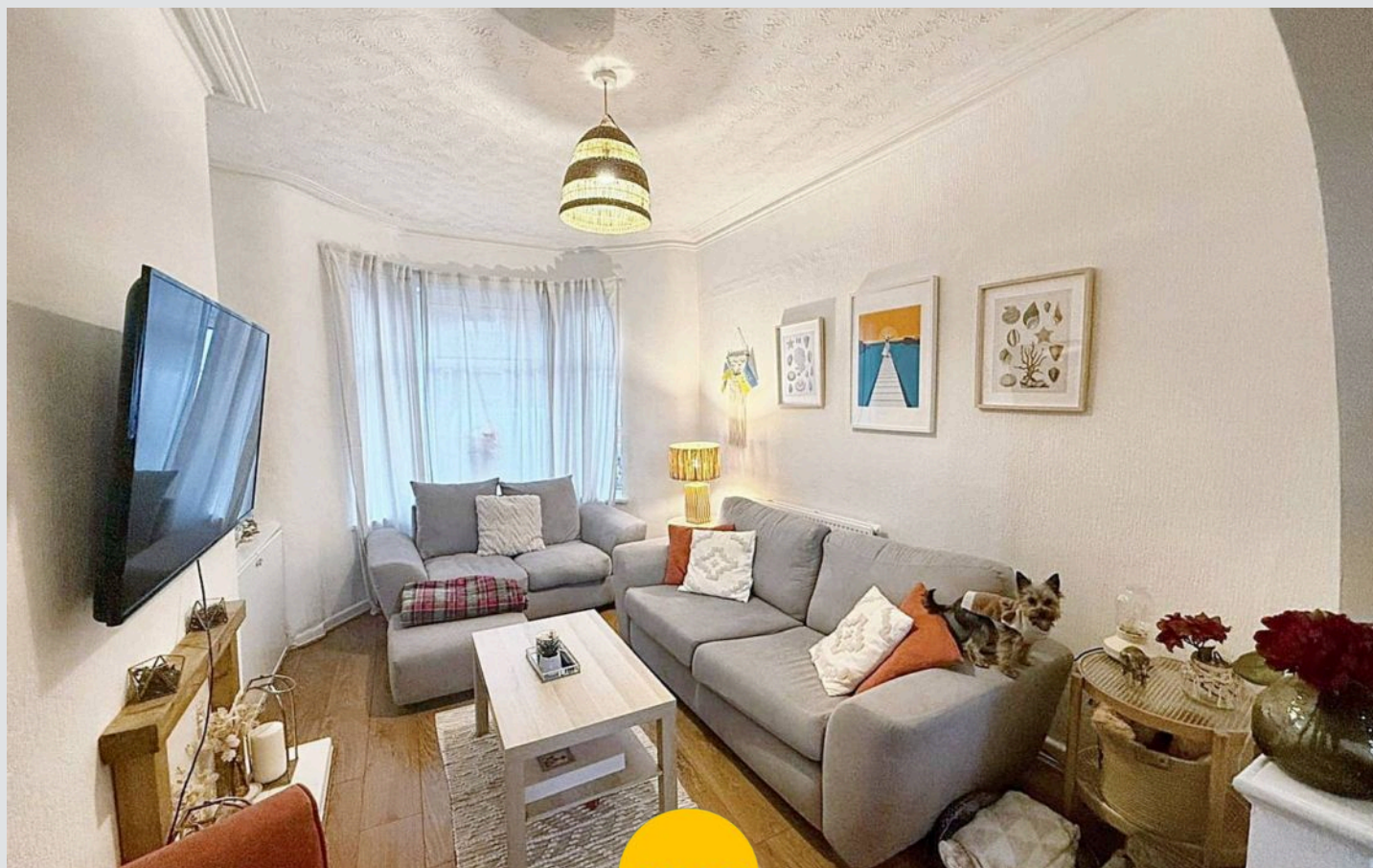
Grange Street

Salford

****Fantastic Three Bedroom Bay-Fronted Property -
Just a Short Walk from Buile Hill Park and Boasting a
Modern Fitted Kitchen!****

Council Tax band: A

- Fantastic Three Bedroom Bay-Fronted Property
- Located Just a Short Walk from Buile Hill Park and Local Schooling
- Bay-Fronted Lounge and a Spacious Dining Room
- Modern Fitted Kitchen
- Three Well-Proportioned Bedrooms
- Modern Three-Piece Bathroom
- Low-Maintenance Courtyard Garden to the Rear
- Close to Excellent Transport Links into Salford Quays, Media City and Manchester City Centre
- Great First Time Home or Investment
- Early Viewing is Essential!



HILLS



Entrance Hallway

Entered via a UPVC front door. Complete with a ceiling light point, wall mounted radiator and wood effect flooring.

Lounge

Dimensions: 14' 5" x 10' 8" (4.399m x 3.258m). Complete with a ceiling light point, double glazed window and wall mounted radiator. Fitted with wood effect flooring.

Dining Room

Dimensions: 12' 11" x 14' 5" (3.929m x 4.382m). Complete with a ceiling light point, double glazed window and wall mounted radiator. Fitted with wood effect flooring.

Kitchen

13' 6" x 8' 3" (4.108m x 2.519m) Fitted with a range of wall and base units with complementary work surfaces and an integral sink and drainer unit. Space for washing machine oven and hob. Complete with ceiling spot lights, double glazed window, part tiled walls and lino flooring.

Landing

Complete with a ceiling light point and carpet flooring.

Bedroom One

Dimensions: 14' 4" x 11' 11" (4.380m x 3.641m). Complete with a ceiling light point, two double glazed windows and wall mounted radiator. Fitted with carpet flooring.

Bedroom Two

Dimensions: 12' 11" x 9' 6" (3.927m x 2.901m). Complete with a ceiling light point, double glazed window and wall mounted radiator. Fitted with carpet flooring.



Bedroom Three

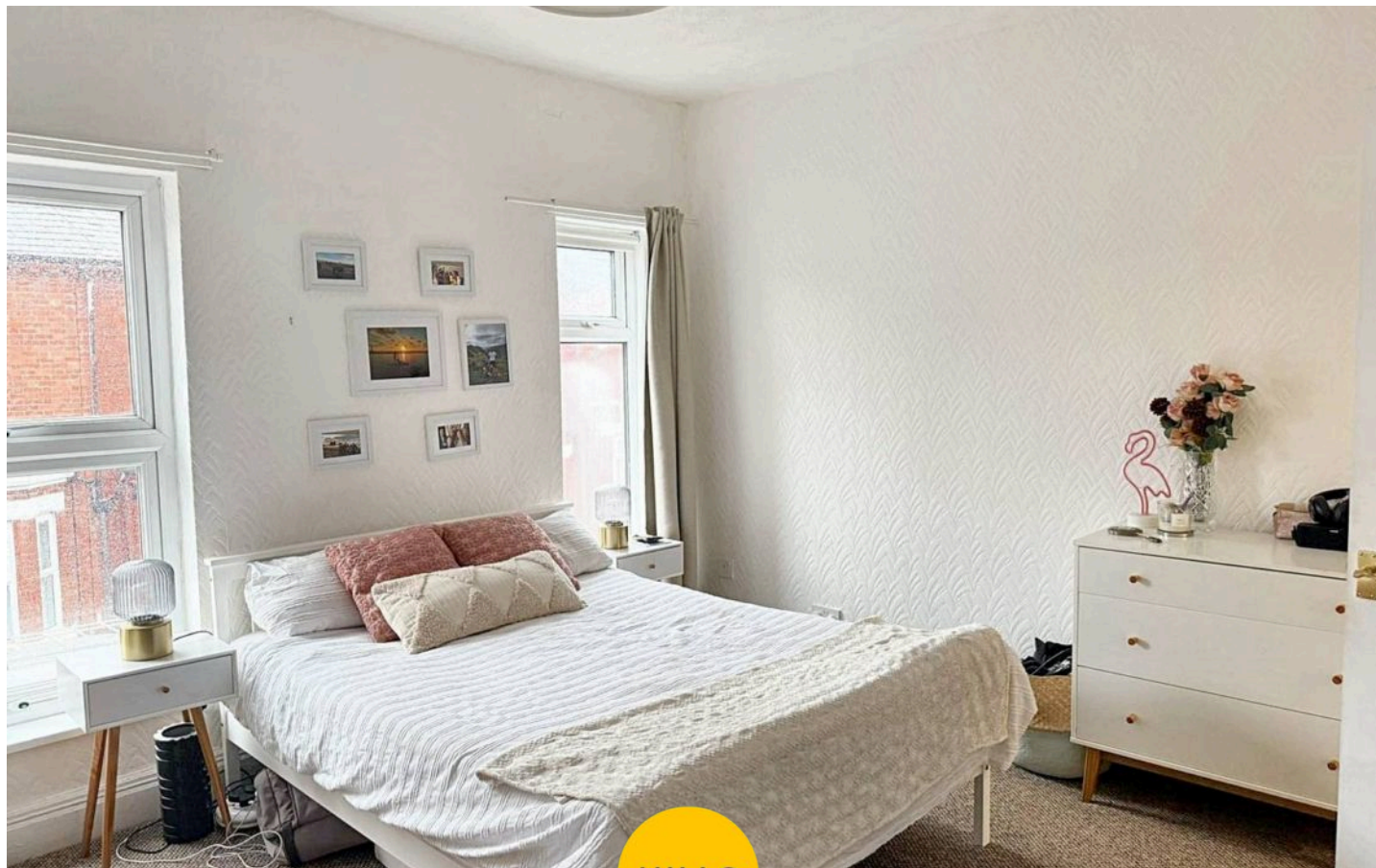
Dimensions: 8' 3" x 6' 10" (2.514m x 2.086m). Complete with a ceiling light point, double glazed window and carpet flooring.

Bathroom

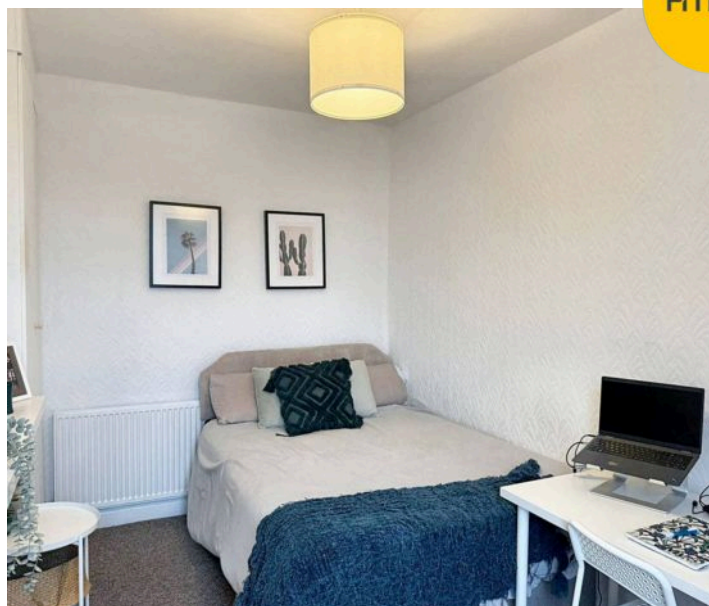
Dimensions: 6' 2" x 5' 5" (1.869m x 1.653m). Fitted with a three piece suite including bath with electric shower over, hand wash basin and low level W.C. Complete with ceiling spotlights, double glazed window, tiled walls and tile effect flooring.

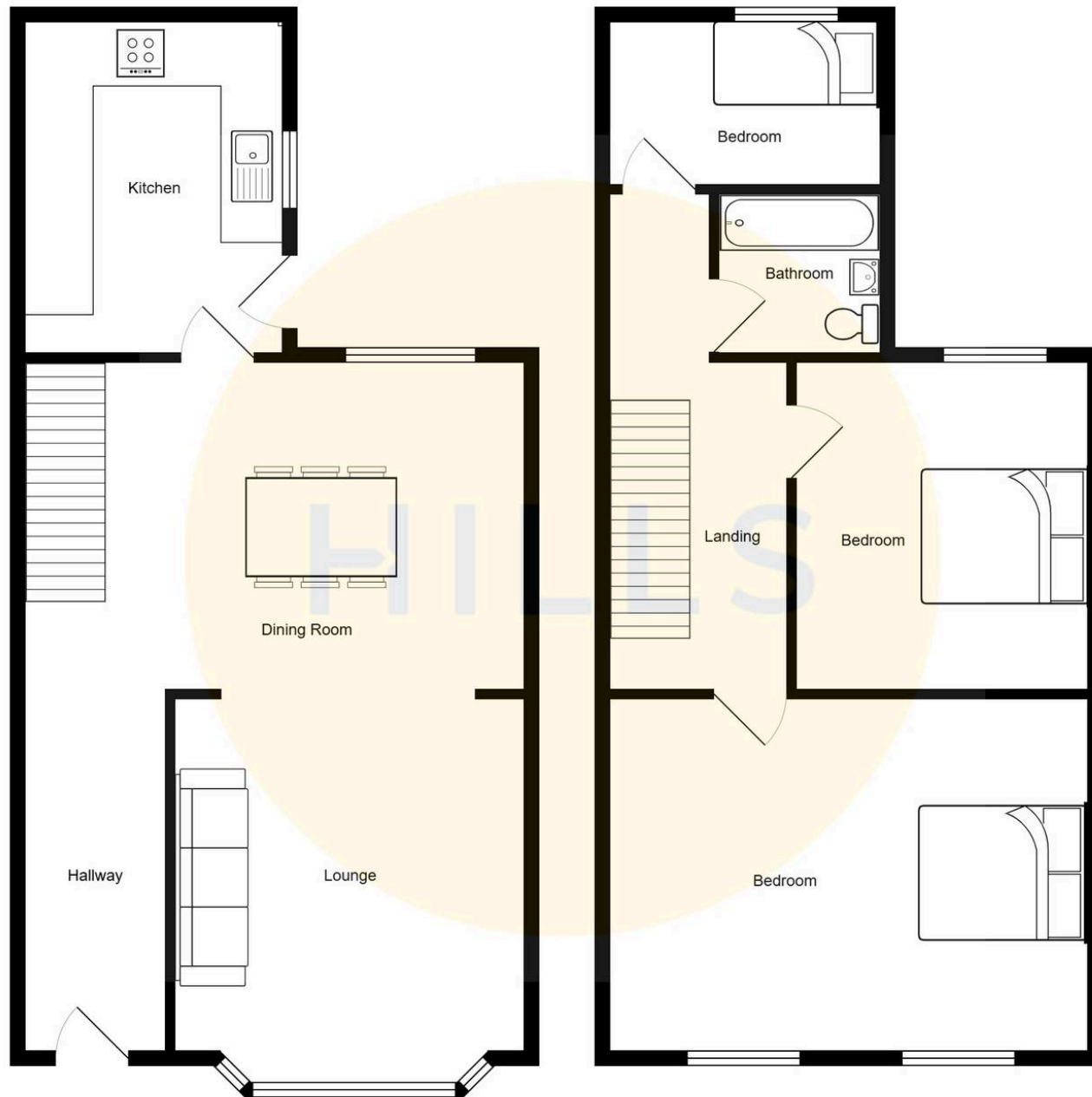
Externally

Externally there is an enclosed yard to the rear.



HILLS







Hills | Salfords Estate Agent

Hills Residential, Sentinel House Albert Street - M30 0SS

0161 707 4900

sales@hills.agency

www.hills.agency/



THE PROPERTY MISDESCRIPTIONS ACT 1991 The Agent has not tested any apparatus, equipment, fixtures and fittings or services and so cannot verify that they are in working order or fit for the purpose. A Buyer is advised to obtain verification from their Solicitor or Surveyor. References to the Tenure of a Property are based on information supplied by the Seller. The Agent has not had sight of the title documents. A Buyer is advised to obtain verification from their Solicitor. You are advised to check the availability of this property before travelling any distance to view. Every effort and precaution has been made to ensure these particulars are correct and not misleading but their accuracy is not guaranteed nor do they form part of any contract. If there is any point which is of particular importance to you, please contact us and we will provide any information you require. This is advisable, particularly if you intend to travel some distance to view the property. The mention of any appliances and services within these details does not imply that they are in full and efficient working order. These particulars are in draft form awaiting Vendors confirmation of their accuracy. These details must therefore be taken as a guide only.